



Site Summary

- Situated on a heavily traveled corridor, just south of I-20
- Dense Daytime Population
- Very strong traffic counts with over 22,000 cars per day on Hwy. 142
- Newton County is the 7th fastest growing county in the U.S. (GA Trend)
- Area Retailers: Home Depot, Wal-Mart, Hampton Inn, QuickTrip, Wells Fargo Bank, Taco Bell, Wendys, Zaxby's, Kauffman Tire, Dollar Tree, Shane's Rib Shack, Subway, AT&T, McDonalds, Aldi, Verizon, Sprint, IHOP

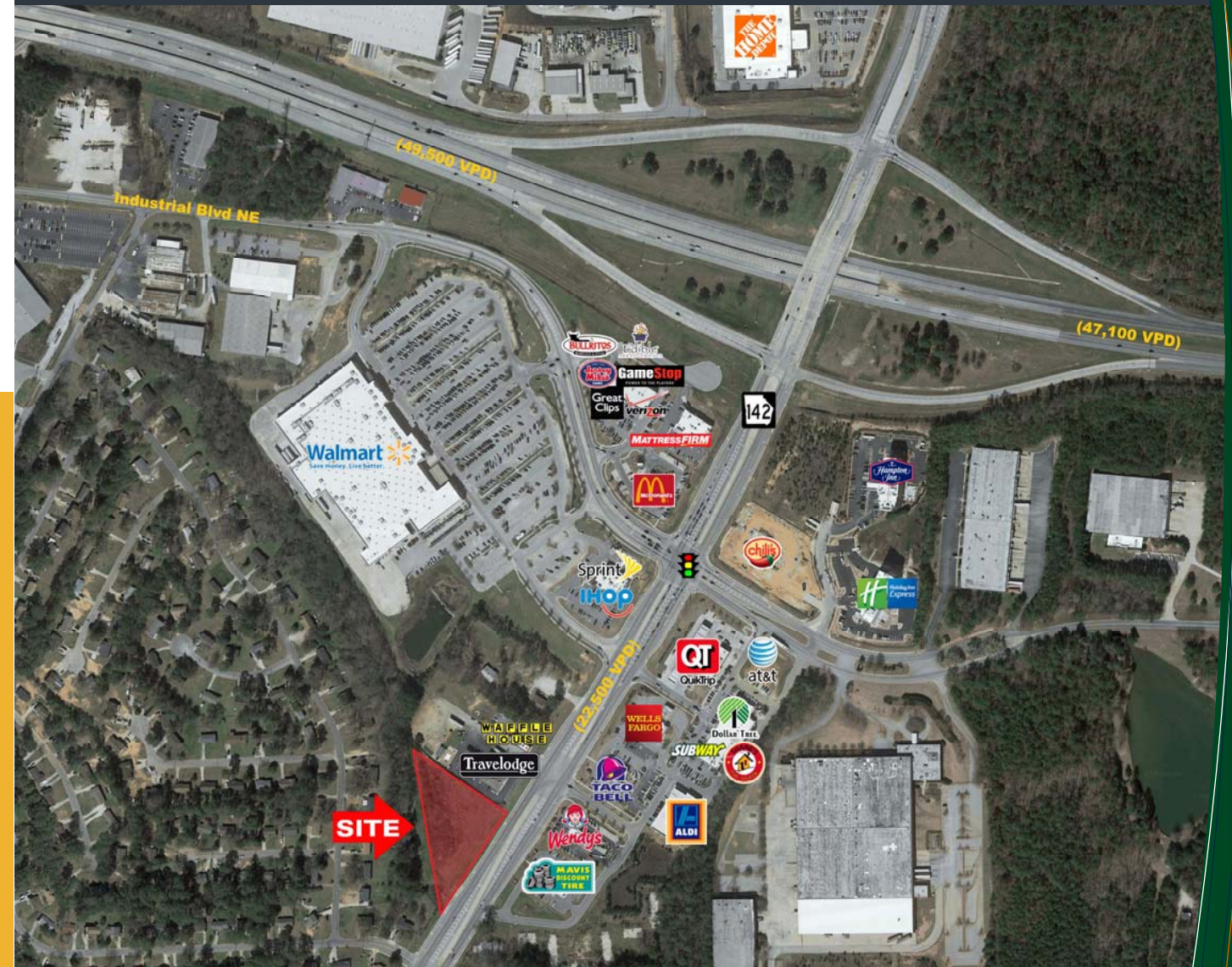
DEMOGRAPHICS:	1-Mile	3-Miles	5-Miles
2018 Est. Population	1,608	18,286	34,385
2018 Avg HH Income	\$ 57,201	\$ 66,967	\$ 69,295
2018 Est. Households	607	6,534	12,029
2018 Est. # of Employees	4,636	16,400	20,136



6400 Powers Ferry Road,
Suite 100
Atlanta, Georgia 30339
(770)955-0404 Office
(770)955-6598 Fax
www.trilogygroup.net

2.4 ACRES AVAILABLE

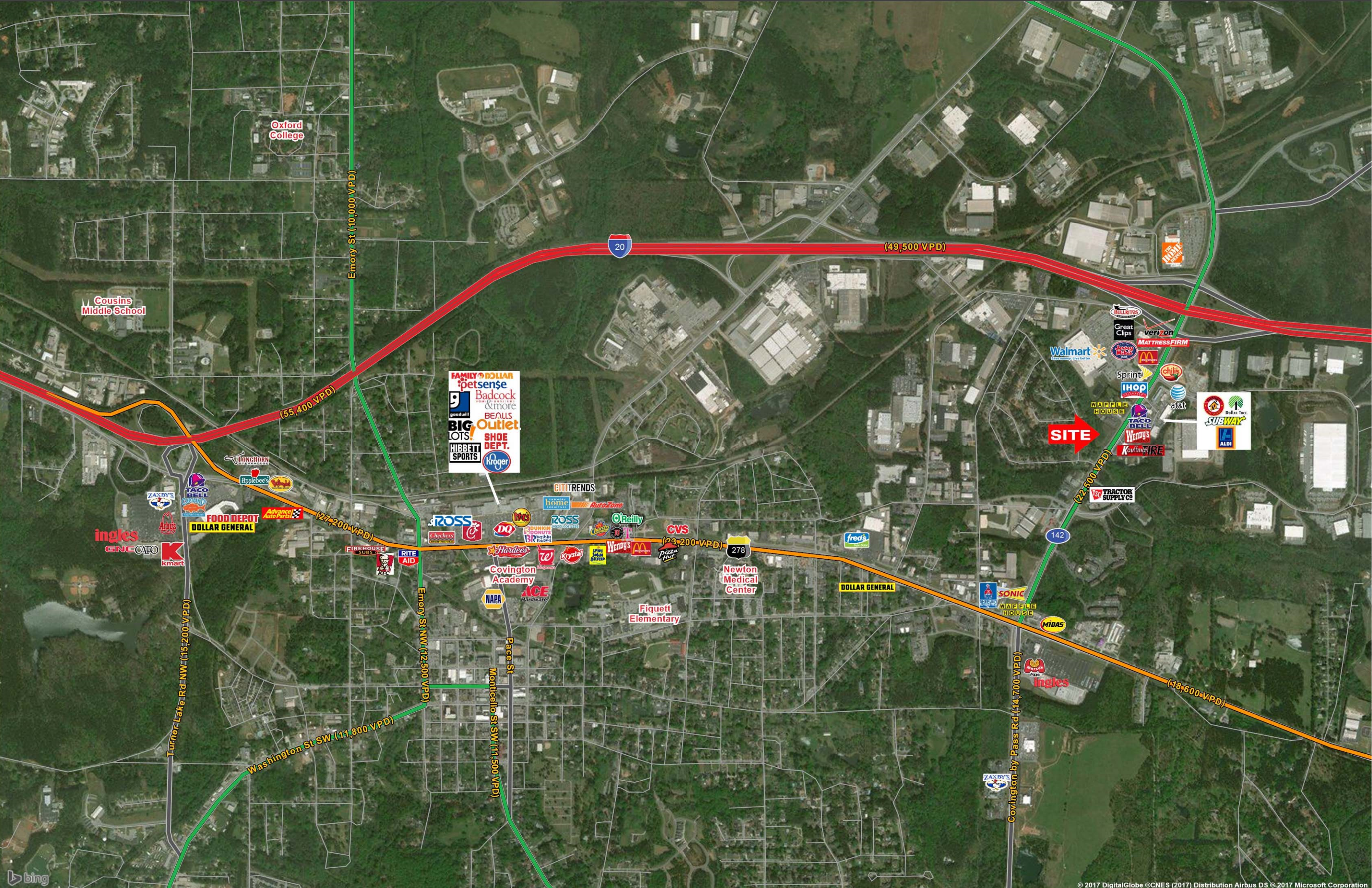
Hwy. 142
Covington, GA (Atlanta MSA)



For More Information, Contact:

Terry Sullivan
770-955-0404
tsullivan@trilogygroup.net





Oxford College

Cousins Middle School

Emory St (10,000 VPD)

20

(49,500 VPD)

(55,400 VPD)

FAMILY DOLLAR
petsense
Badcock & more
BEALLS
BIG LOTS
SHOE DEPT.
HIBBET SPORTS
Kroger

SITE

(22,500 VPD)

(27,200 VPD)

(23,200 VPD)

278

142

DOLLAR GENERAL

Turner Lake Rd NW (15,200 VPD)

Emory St NW (12,500 VPD)

Washington St SW (11,800 VPD)

Pace St
Monticello St SW (11,500 VPD)

Covington by Pass Rd (14,700 VPD)

(18,600 VPD)