



FOR LEASE



36,750 SF



AVAILABLE  
MAY 1, 2020

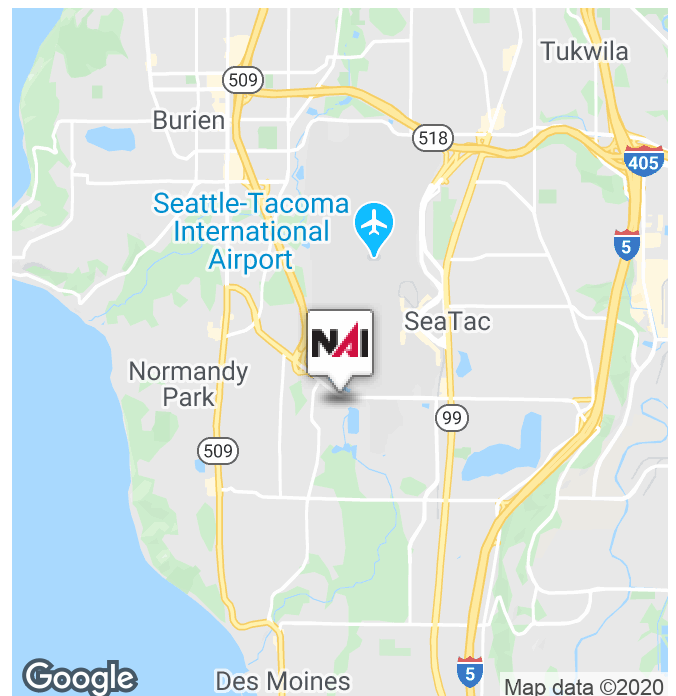


## 16th Avenue Industrial Building

18915 16th Ave S SeaTac, WA 98188

### Property Highlights

- 36,750 SF available (9,174 SF total office area)
- 10 DH & 7 GL door
- 23' clear height
- Call for rates
- Ability to create a small fenced yard area
- Stand alone building for lease adjacent to SeaTac International Airport
- Available May 1, 2020



**Kent Channing**

Partner | 425.586.5628  
kchanning@nai-psp.com

**Arie Salomon, SIOR, CCIM**

Principal | 425.586.5636  
asalomon@nai-psp.com



<https://www.nai-psp.com>

THE INFORMATION SUPPLIED HEREIN IS FROM SOURCES WE DEEM RELIABLE. IT IS PROVIDED WITHOUT ANY REPRESENTATION, WARRANTY OR GUARANTEE, EXPRESSED OR IMPLIED, AS TO ITS ACCURACY. PROSPECTIVE BUYER OR TENANT SHOULD CONDUCT AN INDEPENDENT INVESTIGATION AND VERIFICATION OF ALL MATTERS DEEMED TO BE MATERIAL, INCLUDING, BUT NOT LIMITED TO, STATEMENTS OF INCOME AND EXPENSES. CONSULT YOUR ATTORNEY, ACCOUNTANT OR OTHER PROFESSIONAL ADVISOR.





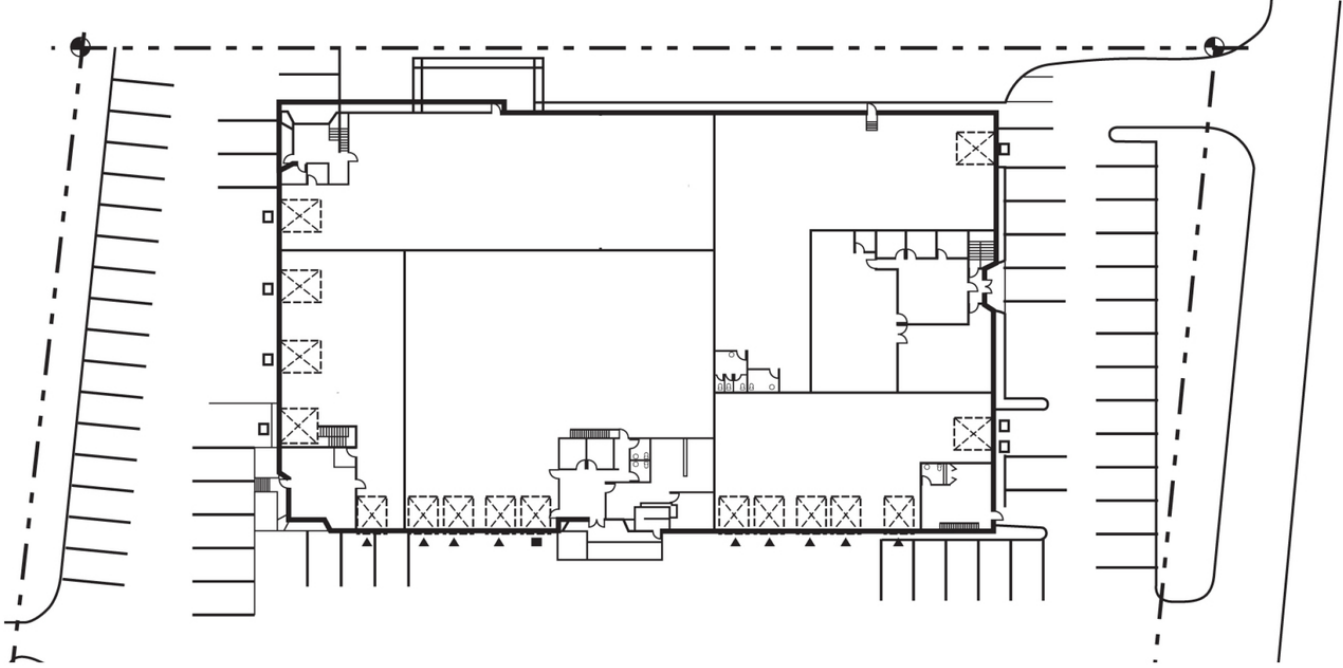
FOR LEASE



36,750 SF



AVAILABLE  
MAY 1, 2020



**Kent Channing**

Partner | 425.586.5628

kchanning@nai-psp.com

**Arie Salomon, SIOR, CCIM**

Principal | 425.586.5636

asalomon@nai-psp.com



<https://www.nai-psp.com>

THE INFORMATION SUPPLIED HEREIN IS FROM SOURCES WE DEEM RELIABLE. IT IS PROVIDED WITHOUT ANY REPRESENTATION, WARRANTY OR GUARANTEE, EXPRESSED OR IMPLIED, AS TO ITS ACCURACY. PROSPECTIVE BUYER OR TENANT SHOULD CONDUCT AN INDEPENDENT INVESTIGATION AND VERIFICATION OF ALL MATTERS DEEMED TO BE MATERIAL, INCLUDING, BUT NOT LIMITED TO, STATEMENTS OF INCOME AND EXPENSES. CONSULT YOUR ATTORNEY, ACCOUNTANT OR OTHER PROFESSIONAL ADVISOR.