

▶ 107 ACRES IN BROOKWOOD FARMS



FOR SALE // PRIME LOCATION

SWC Hinkle Creek Road & 216th Street // Westfield, IN 46062



GREAT POTENTIAL IN SCENIC WESTFIELD

Located in the residential Westfield area, this beautiful 100 acre parcel is mostly wooded land, with creeks and trails, but also offers 25 acres of tillable acreage. This large rural lot has convenient access to US 31.

PROPERTY DETAILS

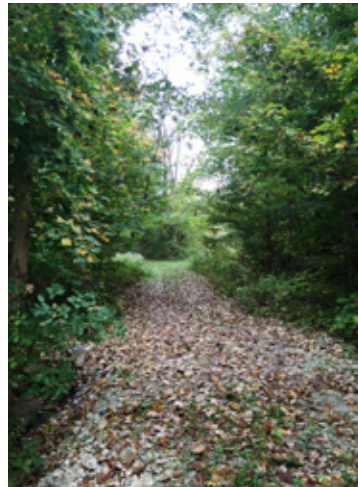
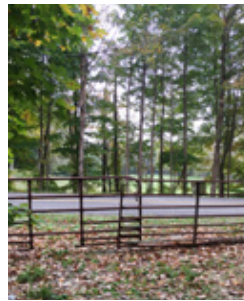
- + Scenic, rolling acreage
- + Ideal estate, equestrian, or investment land
- + Near new US 31 Interchange at SR 38
- + Near Bray Family Homestead Park and Grand Park
- + Sale price: \$2,140,000 (\$20,000/acre)

Westfield is located on the far northside of the Indianapolis Metropolitan area. The city was named one of the Top 50 “Best Places to Live” in 2013, according to CNN Money Magazine. Westfield offers a robust business environment with a high quality of life. The addition of Grand Park, a 400-acre sports complex, is stimulating significant growth throughout the area.

Ross Reller
Senior Vice President &
Director of Land Services
Direct 317 663 6552
Mobile 317 414 1101
ross.reller@rcrc.com

Resource Commercial Real Estate
9339 Priority Way West Drive
Suite 120
Indianapolis, IN 46240
www.RCRE.com

PROPERTY PHOTOS



CONTACT

Ross Reller

Senior Vice President &
Director of Land Services

Direct 317 663 6552

Mobile 317 414 1101

ross.reller@rcre.com

Resource Commercial Real Estate
9339 Priority Way West Drive
Suite 120

Indianapolis, IN 46240

www.RCRE.com

The information contained herein was obtained from sources we consider reliable. We cannot be responsible for errors, omissions, prior sale or lease, withdrawal from the market or change in price. Seller and broker make no representation as to the environmental condition of the property and recommend the lessee's/purchaser's independent investigation.

 **RESOURCE**
COMMERCIAL REAL ESTATE

www.RCRE.com