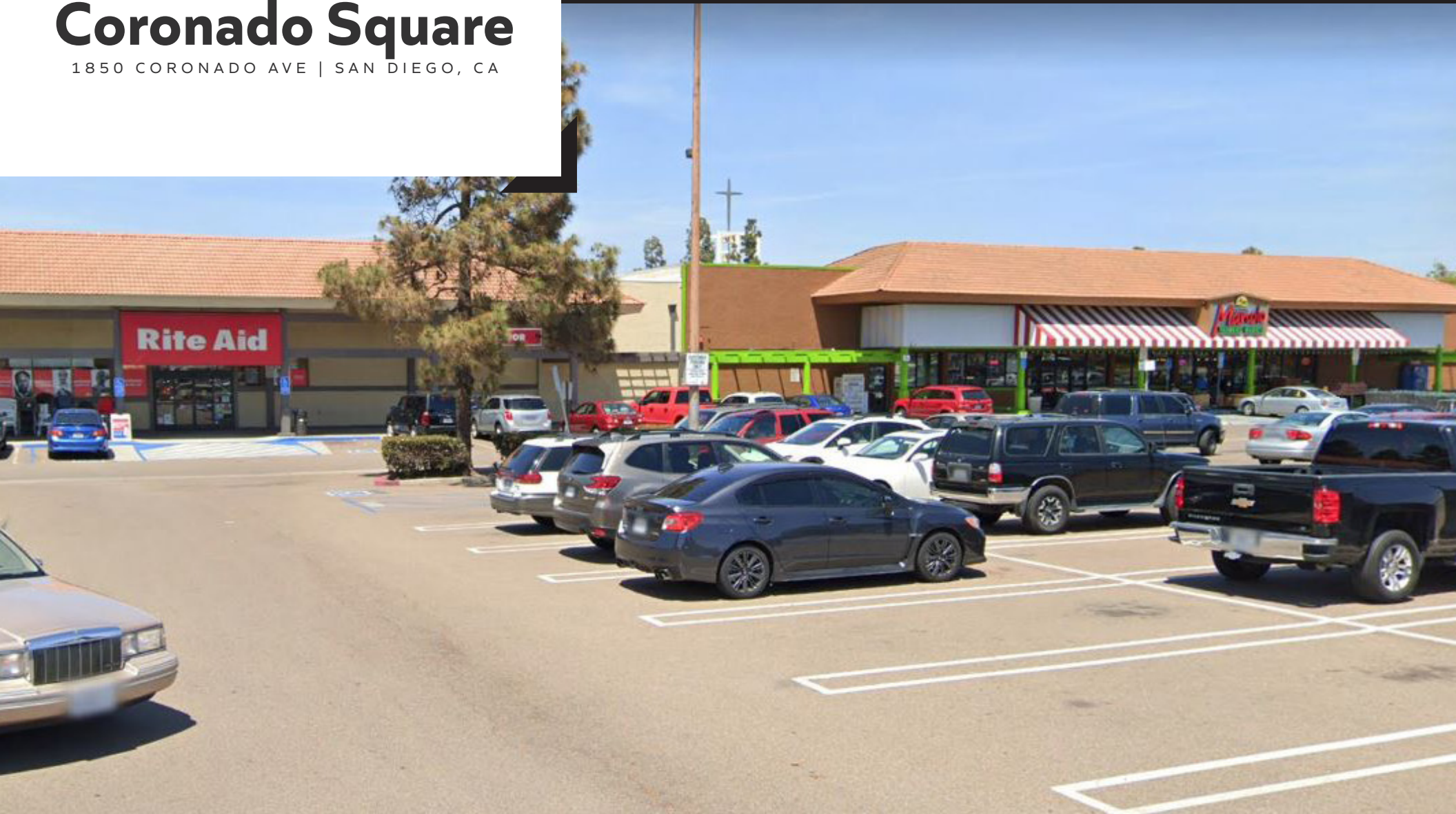


Coronado Square

1850 CORONADO AVE | SAN DIEGO, CA



SPACE AVAILABLE

± 3,145 ±2,450 sf

Can be combined for 5,595 sf

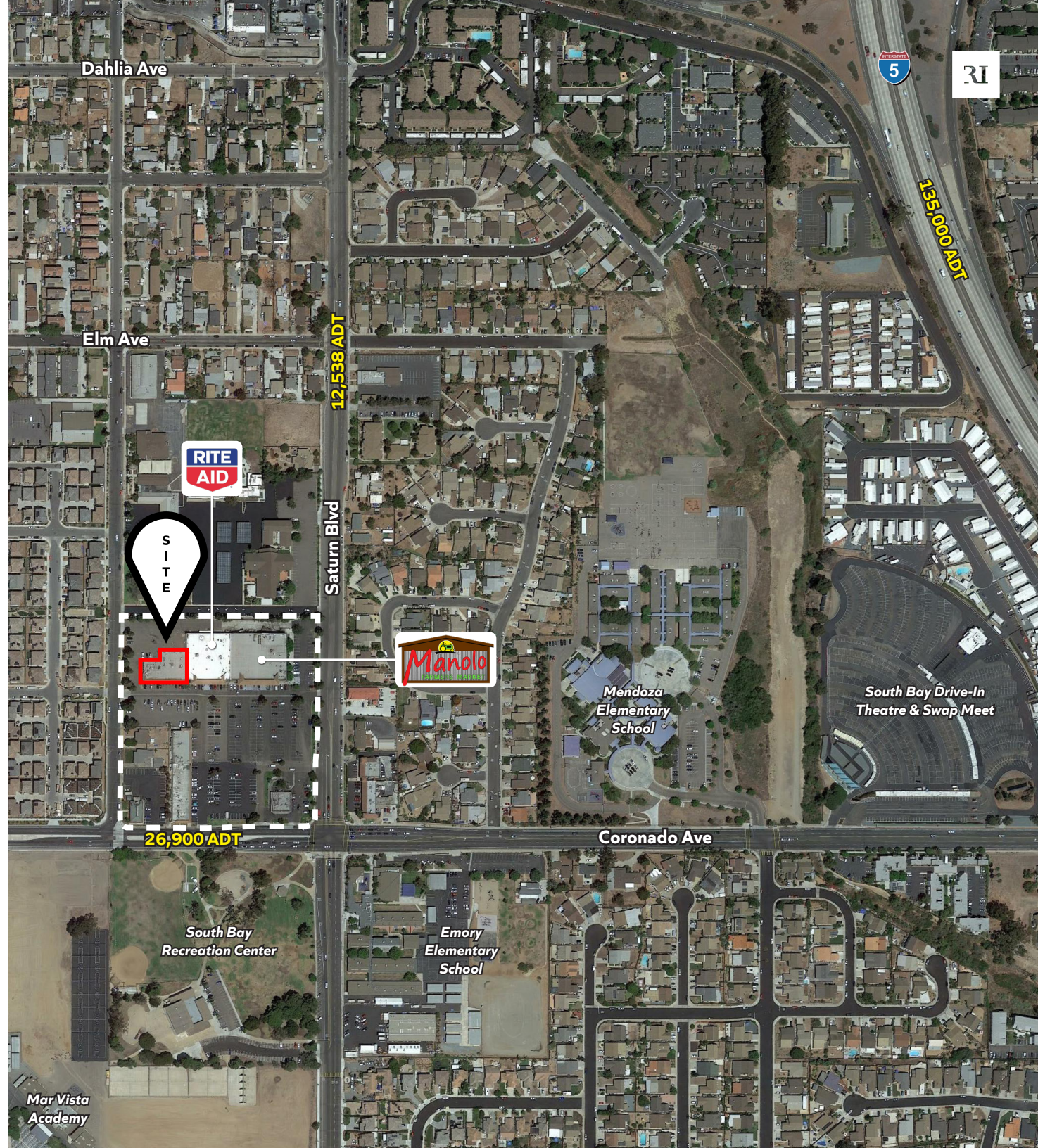
Mike Moser | 858.523.2089 | mikemoser@retailinsite.net

Maya Grim | 858.523.2094 | mgrim@retailinsite.net

Property Highlights

CORONADO SQUARE

- Two Spaces Available:
± 3,145 ±2,450 sf
Can be combined for 5,595 sf
- Anchored by:
Rite Aid
Manalo Farmers Market
- High traffic location on Coronado Avenue
- Easy access to I-5 freeway
- Evolving trade area with housing stock being upgraded and improving demographics





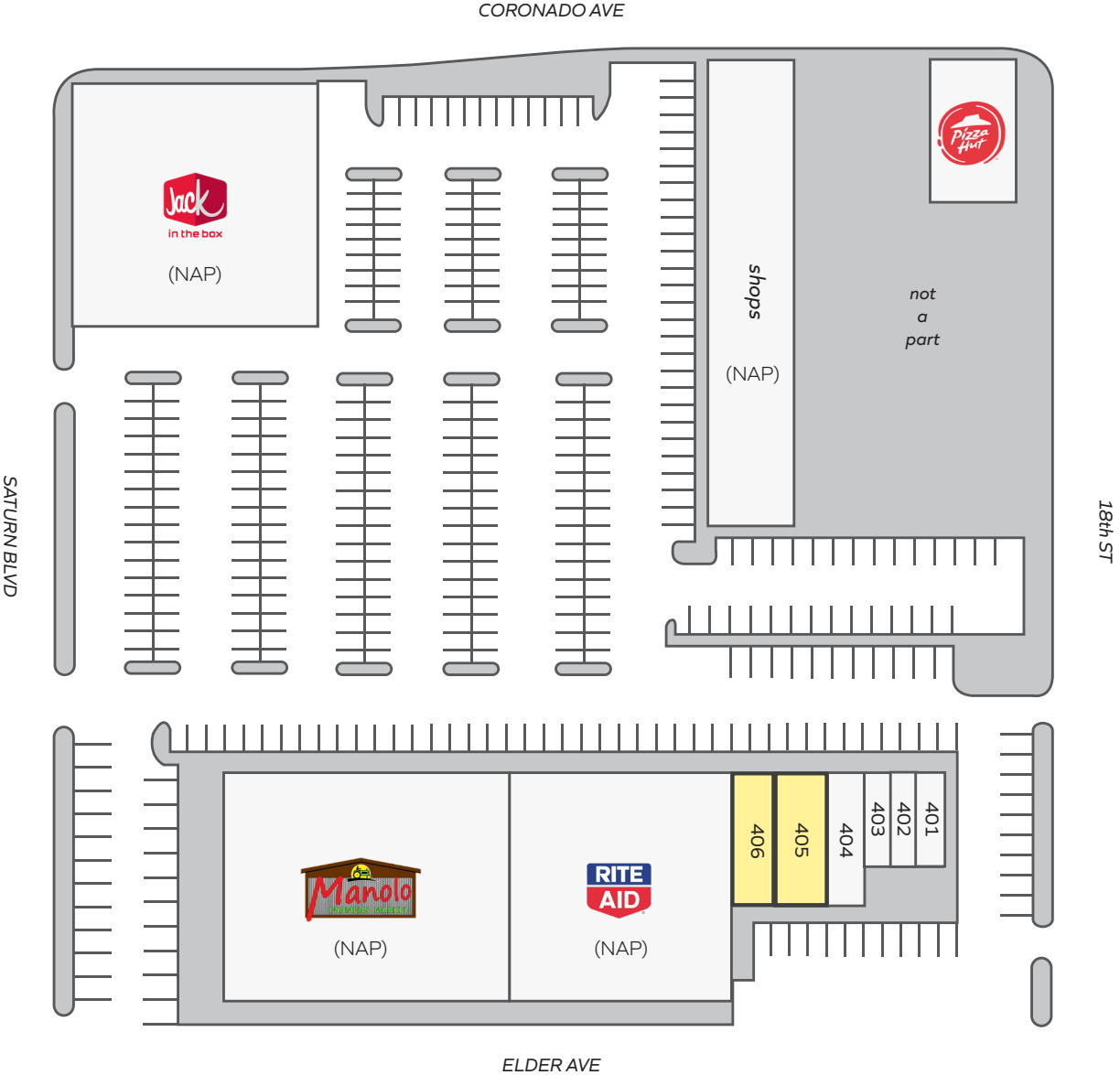
Coronado Square

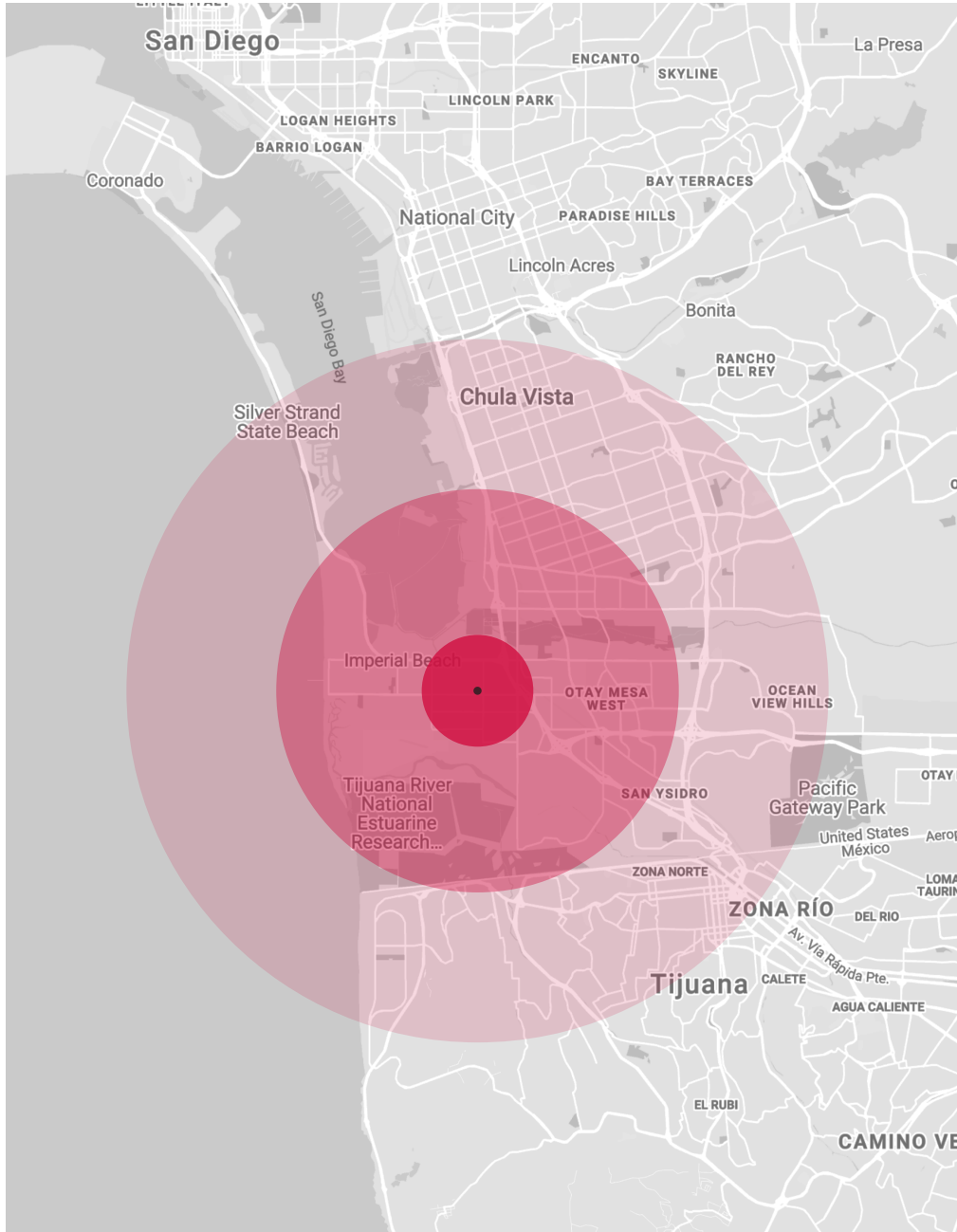
1850 CORONADO AVE | SAN DIEGO, CA

SUITE	TENANT	SQ FT
1854	Rite Aid	
1860	Manolo Farmers Market	
1880	Jack in the Box	
401	Crisp Fish & Chips	
402	RJ's Barber Shop	
403	Liu's Chinese Restaurant	
404	South Bay Dental	
405*	AVAILABLE	±3,145
406*	AVAILABLE	±2,450

* Can be combined

(NAP) - Not a Part of Listing





Demographics

EXPANDED DEMOGRAPHIC PROFILE

	1 Mile	3 Miles	5 Miles
Population			
Estimated Population	34,598	148,056	273,498
Forecasted Population (2022)	35,703	152,474	282,705
Daytime Demos			
Total Daytime Population	26,315	115,048	221,797
Median HH Income			
Estimated Median Household Income	\$52,644	\$51,848	\$56,578
Median Disposable Income	\$44,156	\$43,619	\$48,189
Avg HH Income			
Estimated Avg Household Income	\$65,960	\$65,749	\$73,689
Avg Disposable Income	\$53,091	\$53,168	\$58,498
Age			
Median Age	31.9	33.1	33.9

Coronado Square

1850 CORONADO AVE | SAN DIEGO, CA

RI RETAIL INSITE

Mike Moser | 858.523.2089 | mikemoser@retailinsite.net

Maya Grim | 858.523.2094 | mgrim@retailinsite.net