

FOR LEASE

# 2201 MEDICAL BUILDING

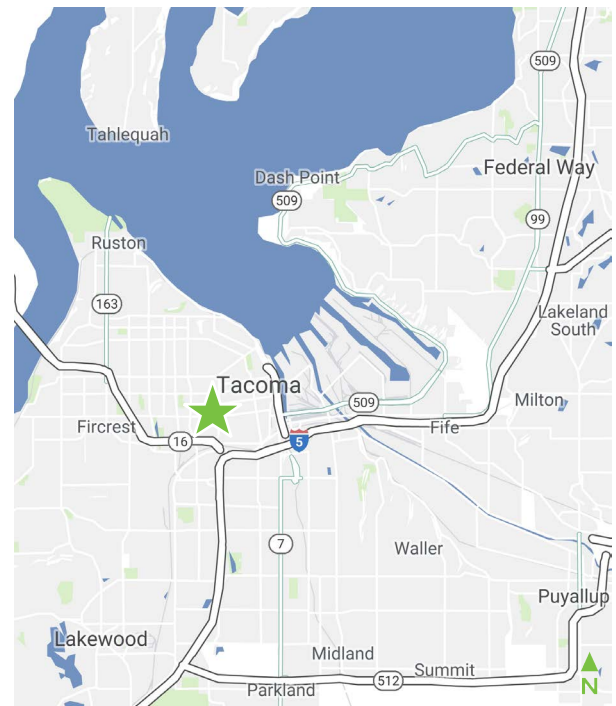
2201  
SOUTH 19TH STREET  
Tacoma, WA 98405



## PROPERTY INFO

Centrally located medical office building near the Allenmore Medical Campus. The property has ample parking and direct freeway access.

- + Two suites available:
  - Suite 200: 2,339 SF
  - Suite 201: 175 SF
  - Suite 205: 896 SF
  - Suite 206: 227 SF
- + \$16.00, plus NNN
- + NNN's estimated at \$9.00 PSF for 2019
- + Storage available
- + Entire building is sprinklered



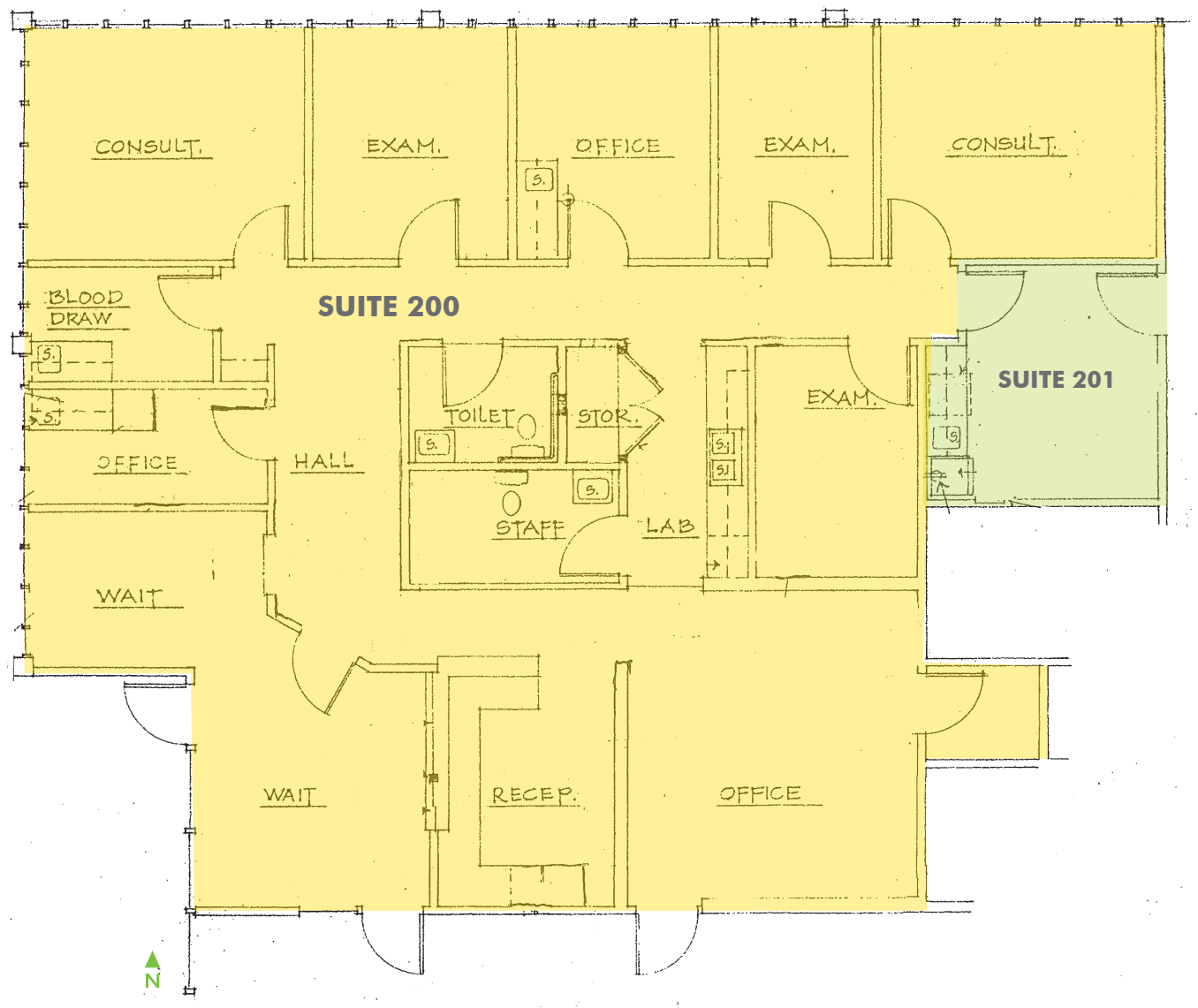
[www.cbre.us/tacoma](http://www.cbre.us/tacoma)

**CBRE**

# FOR LEASE 2201 MEDICAL BUILDING



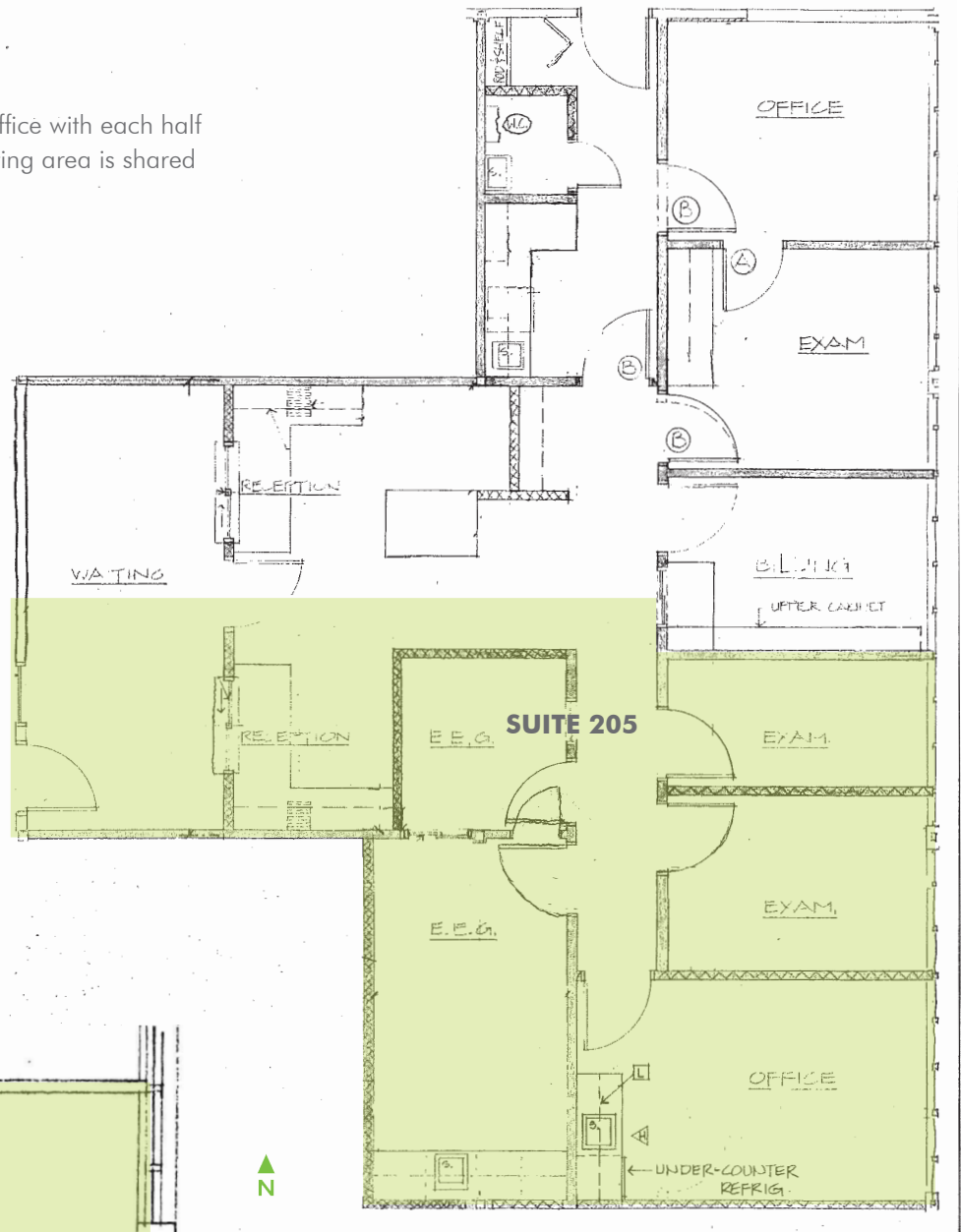
## SUITE 200 & 201



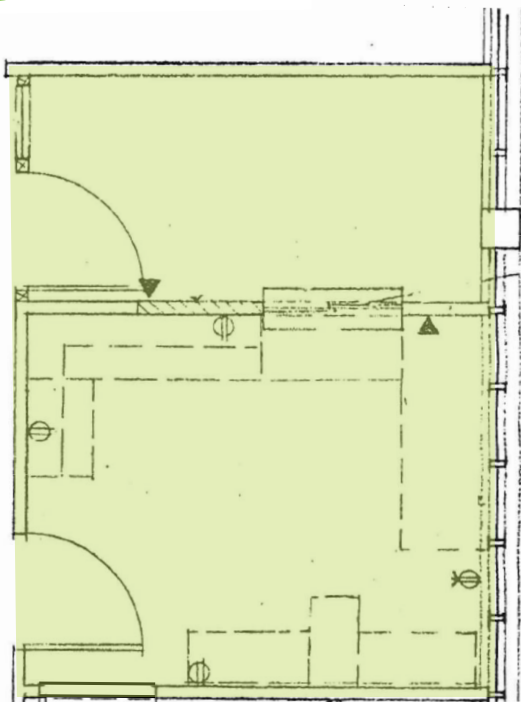


### SUITE 205

Suite 205 is a shared office with each half being 896 SF. The waiting area is shared by both tenants.



### SUITE 206



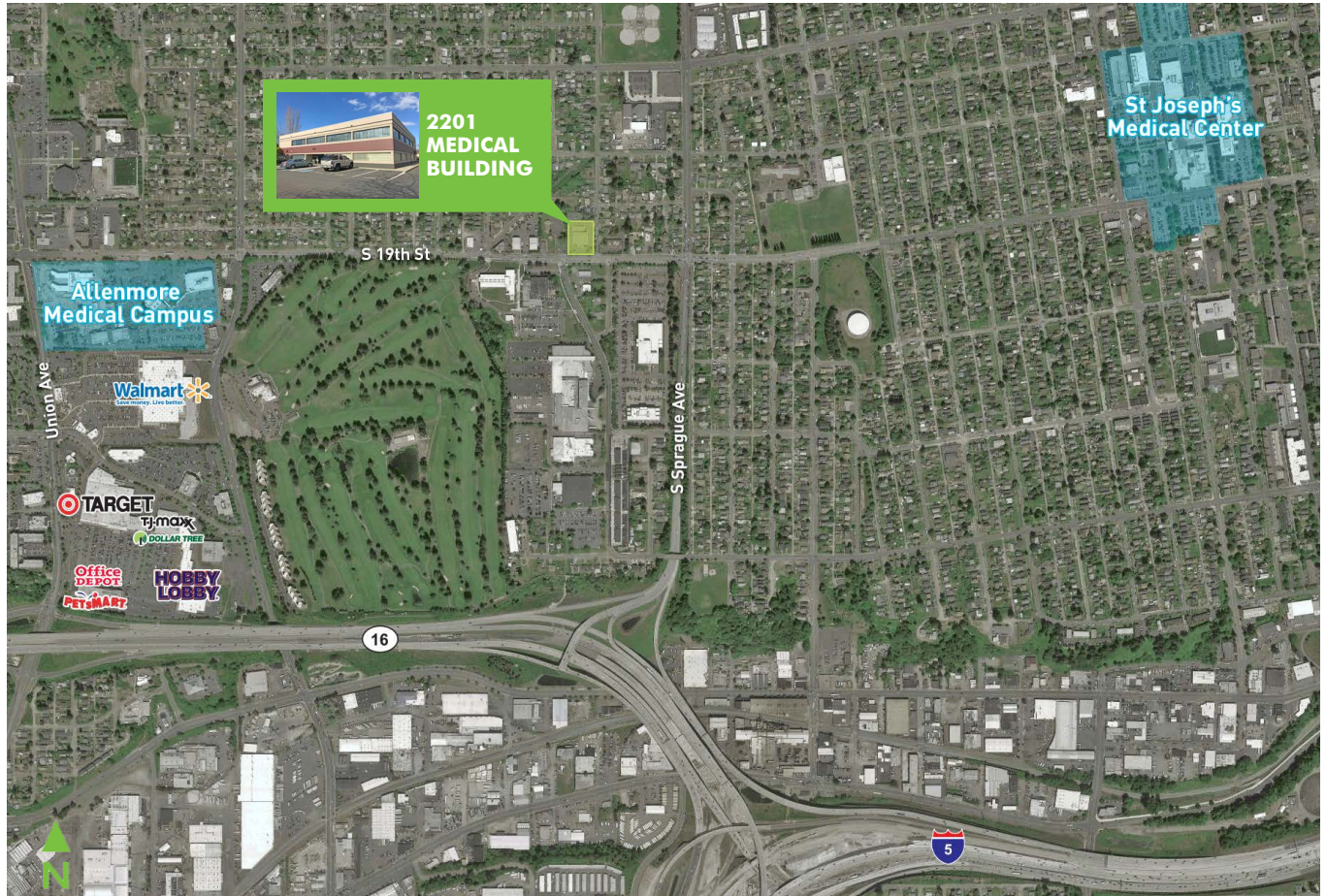


# FOR LEASE 2201 MEDICAL BUILDING

2201  
SOUTH 19TH STREET  
Tacoma, WA 98405



## PROPERTY LOCATION



## CONTACT US

### JOHN BAUDER

First Vice President  
+1 253 596 0047  
john.bauder@cbre.com

### HARRISON LAIRD

Vice President  
+1 253 596 0030  
harrison.laird@cbre.com

### CBRE, INC

1201 Pacific Avenue  
Suite 1502  
Tacoma, WA 98402

© 2019 CBRE, Inc. All rights reserved. This information has been obtained from sources believed reliable, but has not been verified for accuracy or completeness. You should conduct a careful, independent investigation of the property and verify all information. Any reliance on this information is solely at your own risk. CBRE and the CBRE logo are service marks of CBRE, Inc. All other marks displayed on this document are the property of their respective owners, and the use of such logos does not imply any affiliation with or endorsement of CBRE. Photos herein are the property of their respective owners. Use of these images without the express written consent of the owner is prohibited. RB 10.28.20

[www.cbre.us/tacoma](http://www.cbre.us/tacoma)

**CBRE**