

1610 ALGONQUIN STREET  
DETROIT, MICHIGAN

FOR SALE OR LEASE

35,844 Sq. Ft. / 6.10 Acres Available



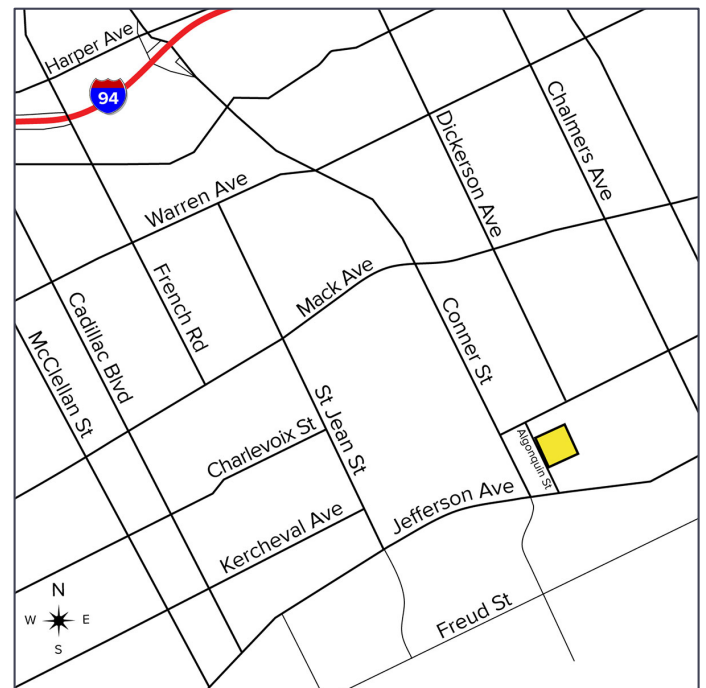
**SIGNATURE  
ASSOCIATES**  
KNOW SIGNATURE | KNOW RESULTS

UNIQUE PROPERTY IDEAL FOR MANY USES



## PROPERTY FEATURES

- 35,844 square feet / 6.10 acres available
- Unique site with two structures of 10,093 sq. ft. and 25,751 sq. ft. on Detroit's East Side just off Jefferson Avenue
- Existing buildings can be adapted for innovative uses or remain on site as physical monuments to the past and be developed around
- Property has historical significance and has been studied by several universities and has international relevance
- Site is directly adjacent to the FCA Plant currently undergoing a \$4 billion expansion
- Possibility to purchase just 1.7 – 2.5 vacant acres of the property
- Property is ideal for many uses including industrial, redevelopment, or recreational
- Sale price: \$1,518,000 (\$248,934.08/acre)



For more information, please contact:

**CHRIS MONSOUR**

(248) 948 0107

[cmonsour@signatureassociates.com](mailto:cmonsour@signatureassociates.com)

**JOHN HAMBURGER**

(248) 799 3142

[jhamburger@signatureassociates.com](mailto:jhamburger@signatureassociates.com)

**SIGNATURE ASSOCIATES**

One Towne Square, Suite 1200

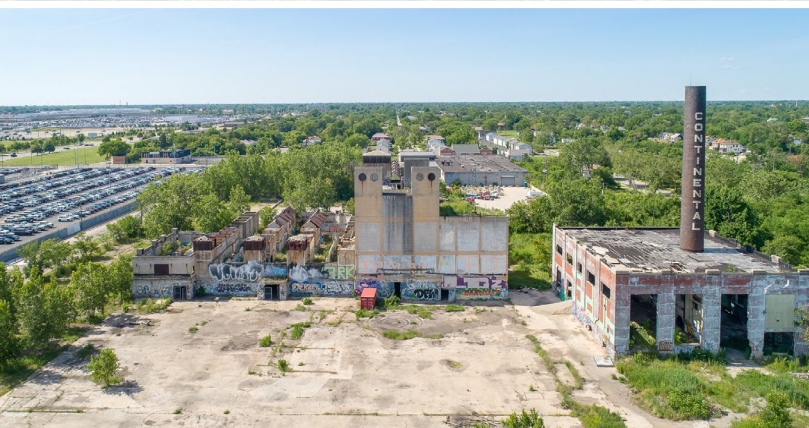
Southfield, MI 48076

[www.signatureassociates.com](http://www.signatureassociates.com)

# 1610 Algonquin Street – Detroit, Michigan

Industrial / Land For Sale or Lease

35,844  
Square Feet /  
6.10 Acres  
AVAILABLE



For more information, please contact:

**CHRIS MONSOUR**

(248) 948 0107

[cmonsour@signatureassociates.com](mailto:cmonsour@signatureassociates.com)

**JOHN HAMBURGER**

(248) 799 3142

[jhamburger@signatureassociates.com](mailto:jhamburger@signatureassociates.com)

**SIGNATURE ASSOCIATES**

One Towne Square, Suite 1200

Southfield, MI 48076

[www.signatureassociates.com](http://www.signatureassociates.com)

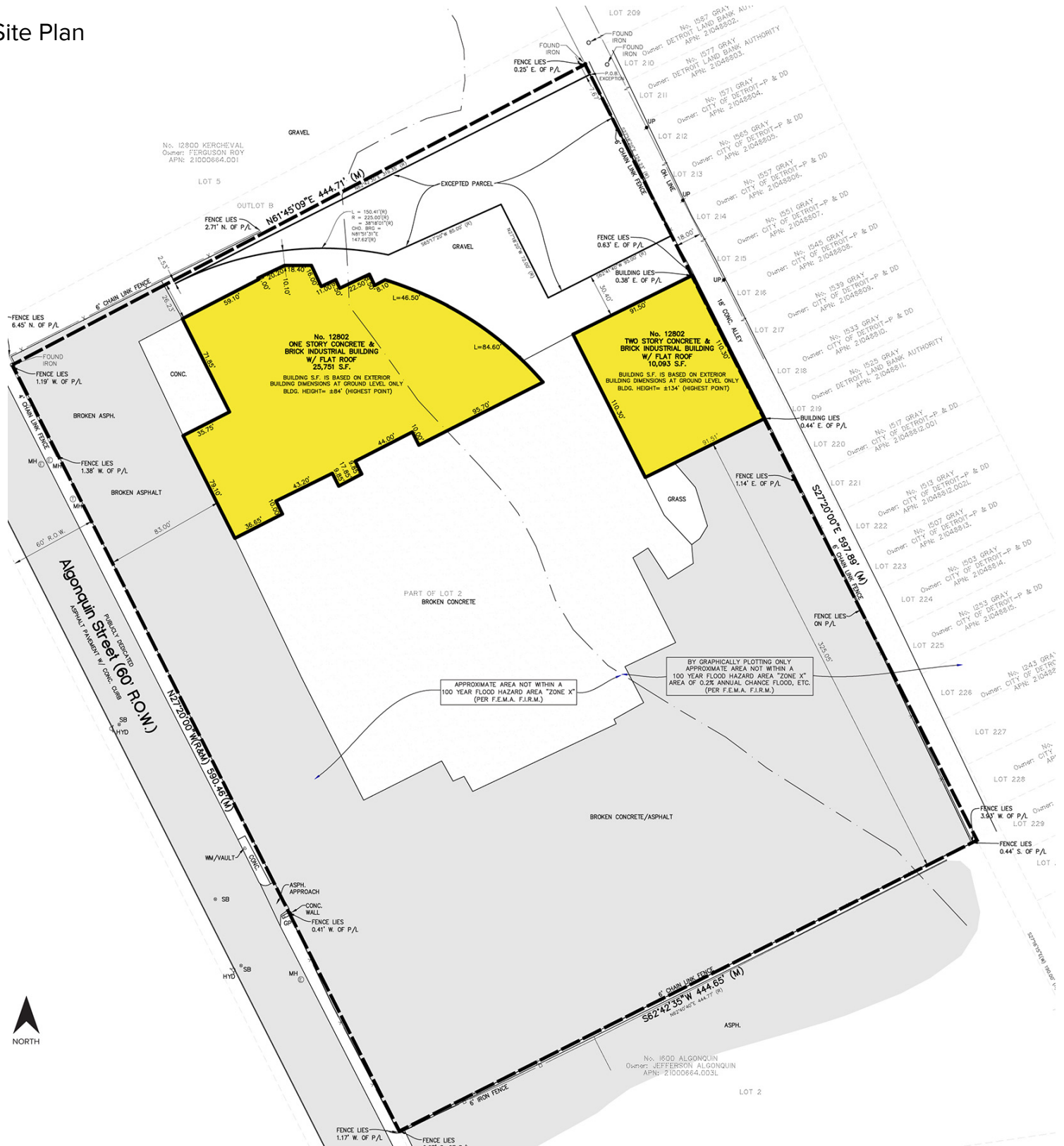
Information is subject to verification and no liability for errors or omissions is assumed. Price is subject to change and listing withdrawal.

# 1610 Algonquin Street – Detroit, Michigan

## Industrial / Land For Sale or Lease

**35,844**  
**Square Feet /**  
**6.10 Acres**  
**AVAILABLE**

### Site Plan



For more information, please contact:  
**CHRIS MONSOUR**  
 (248) 948 0107  
 cmonsour@signatureassociates.com

**JOHN HAMBURGER**  
 (248) 799 3142  
 jhamburger@signatureassociates.com

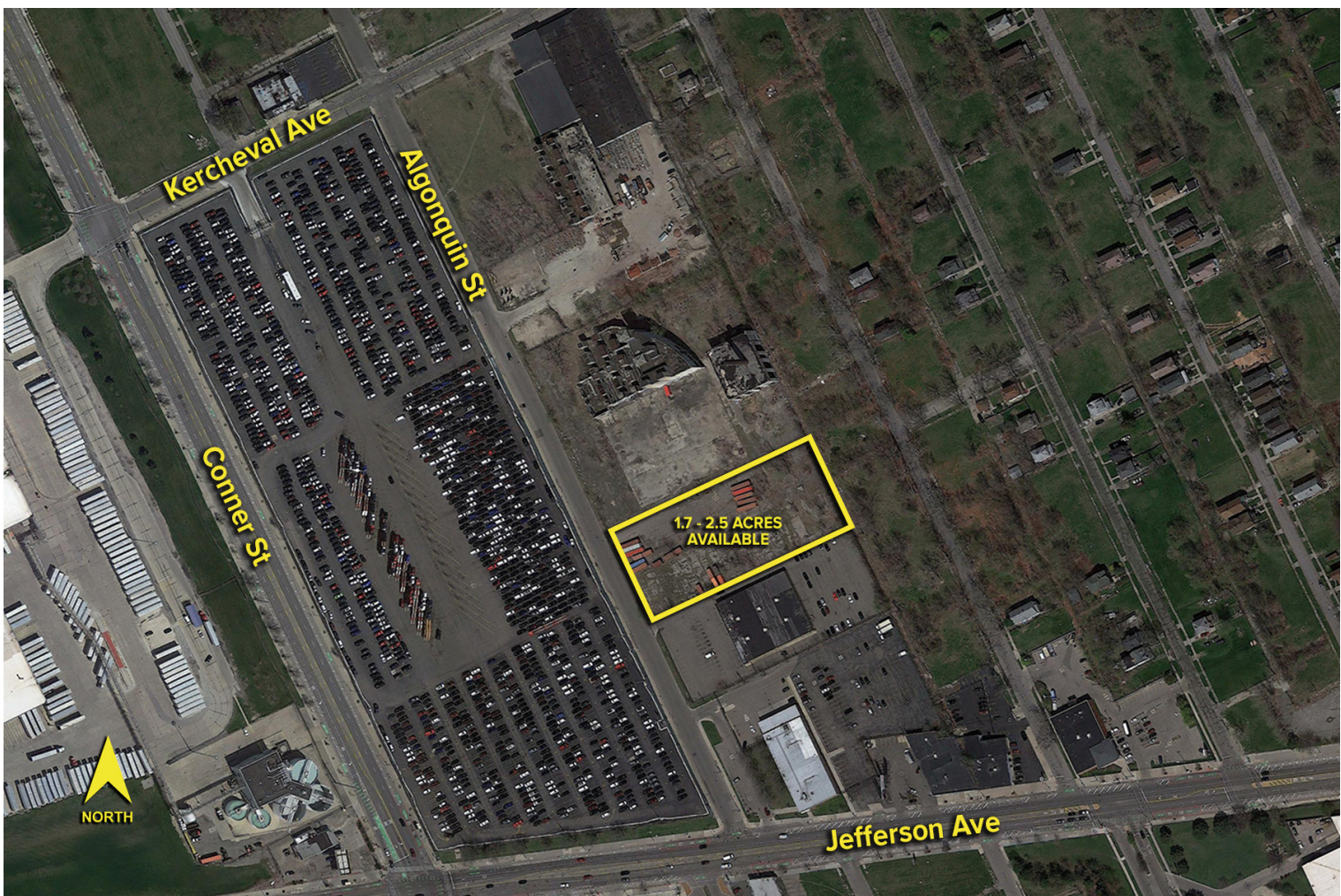
**SIGNATURE ASSOCIATES**  
 One Towne Square, Suite 1200  
 Southfield, MI 48076  
 www.signatureassociates.com

# 1610 Algonquin Street – Detroit, Michigan

Industrial / Land For Sale or Lease

35,844  
Square Feet /  
6.10 Acres  
AVAILABLE

Additional Aerial



\*Possibility to purchase this 1.7 – 2.5 AC vacant section of land

For more information, please contact:  
**CHRIS MONSOUR**  
(248) 948 0107  
cmonsour@signatureassociates.com

**JOHN HAMBURGER**  
(248) 799 3142  
jhamburger@signatureassociates.com

**SIGNATURE ASSOCIATES**  
One Towne Square, Suite 1200  
Southfield, MI 48076  
www.signatureassociates.com

Information is subject to verification and no liability for errors or omissions is assumed. Price is subject to change and listing withdrawal.