

Waterfront Development Site

1931 South 304th Street, Federal Way, WA



South 304th Street

Pacific Highway South



Exclusively marketed by:

Rick Graff
+1 206 332 1493
rgraff@nai-psp.com

Andrew Graff
+1 206 332 1486
agraff@nai-psp.com

Kyle Graff
+1 206 332 1494
kgraff@nai-psp.com

Investment Overview



ADDRESS

1931 South 304th Street, Federal Way, WA 98198



SALE PRICE

\$1,100,000



LOT SIZE

5.92 Acres



PRICE PER SF LAND

\$4.27



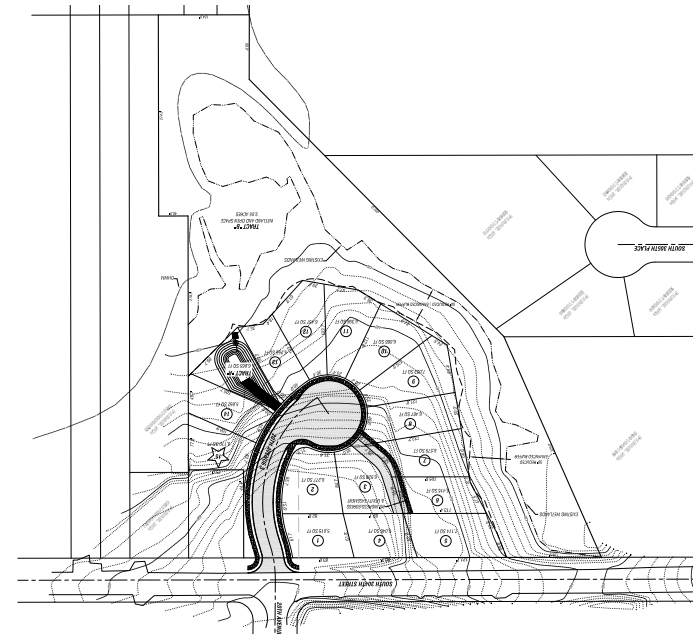
ZONING

RS 5.0 & RS 7.2



Property Highlights

- 15 lot single-family development
- Two tax parcels: 0921049012 and 0921049199
- Conveniently situated on Steel Lake
- Within walking distance from Steel Lake Park; large lakefront area with picnic areas, playground, and boat launch



Location Summary

About Federal Way

Federal Way is the tenth largest city in Washington and the fifth largest in King County. It offers convenient access to Seattle, Bellevue, Tacoma and SeaTac International Airport. Originally a logging town, this city has transformed into an affluent area in the region and is now home to 96,690 residents. The city's close proximity to Tacoma (13 miles) and Seattle (23 miles) factor into being such a desirable location for commercial tenants. Some of the largest employers in Federal Way included St. Francis Hospital, Federal Way Public Schools, World Vision Inc. and Wild Waves Theme Park.

Demographics

	1 Mile	3 Miles	5 Miles
Total Households	6,293	37,346	85,203
Total Population	17,720	102,849	230,717
Average HH income	\$75,715	\$92,487	\$90,542
Median Age	37.0	37.0	37.2

