

# 15567 & 15569 E U.S. HIGHWAY 60

GOLD CANYON, AZ 85118 | INDUSTRIAL LAND FOR SALE

PREVIOUSLY APPROVED PLANS PLANS FOR COVERED RV/BOAT STORAGE

\$2,200,000 (\$3.05 PSF)

15567 E U.S. Highway 60  
Parcel Number: 104-15-0010  
Acres: 1.8  
Zoning: CB-2 (Business)

15569 E U.S. Highway 60  
Parcel Number: 104-15-0080  
Acres: 14.75  
Zoning: C1-I (Light Industrial)



ARIZONIAN  
RV RESORT



### SITE DETAILS

- Site: ± 16.55 Acres
- ±2 Acres on Highway 60  
Zoned CB-2 (Business)
- ±14 Acres Zoned C1-I  
(Light Industrial)
- Gated and Fenced with Roads
- Approved plans for RV/Boat storage facility

For More Information, Please Contact:

**Andy Jaffe**  
D 480.214.1132  
M 602.330.8777  
ajaffe@cpiaz.com

**Rex Griswold**  
M 480.244.7222  
rgriswold@cpiaz.com

**Paul Wood**  
M: 480.420.7460  
pwoods@cpiaz.com

The information contained herein has been obtained from various sources. We have no reason to doubt its accuracy; however, J & J Commercial Properties, Inc. has not verified such information and makes no guarantee, warranty or representation about such information. The prospective buyer or lessee should independently verify all dimensions, specifications, floor plans, and all information prior to the lease or purchase of the property. All offerings are subject to prior sale, lease, or withdrawal from the market without prior notice. Effective: 01 25 22

# 15567 & 15569 E U.S. HIGHWAY 60

GOLD CANYON, AZ 85118 | INDUSTRIAL LAND FOR SALE

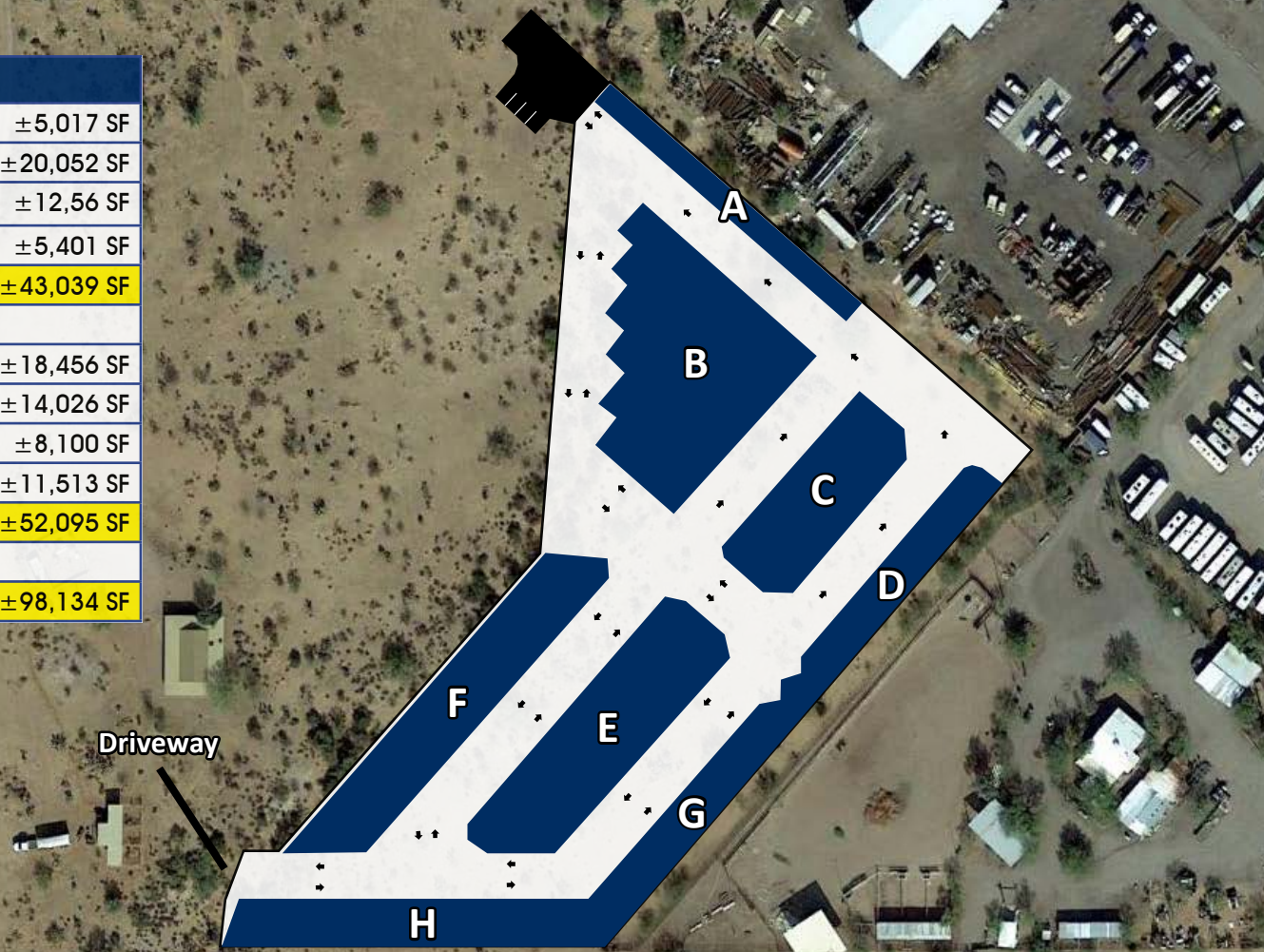
PREVIOUSLY APPROVED PLANS PLANS FOR COVERED RV/BOAT STORAGE

\$2,200,000 (\$3.05 PSF)

## BUILDING INFORMATION

Building A	Non-Contioned Mini-Storage	±5,017 SF
Building B	AC and Non-AC Mini-Storage	±20,052 SF
Building C	Enclosed RV Storage	±12,56 SF
Building D	Enclosed RV Storage	±5,401 SF
<b>Total Enclosed:</b>		<b>±43,039 SF</b>
Building E	RV Canopies	±18,456 SF
Building F	RV Canopies	±14,026 SF
Building G	RV Canopies	±8,100 SF
Building H	RV Canopies	±11,513 SF
<b>Total RV Conopies:</b>		<b>±52,095 SF</b>
<b>Total:</b>		<b>±98,134 SF</b>

## NAVAJO ROSE SELF STORAGE SITE PLAN



For More Information, Please Contact:

**Andy Jaffe**  
D 480.214.1132  
M 602.330.8777  
ajaffe@cpiaz.com

**Rex Griswold**  
M 480.244.7222  
rgriswold@cpiaz.com

**Paul Wood**  
M: 480.420.7460  
pwoods@cpiaz.com



**COMMERCIAL PROPERTIES INC.**

Locally Owned. Globally Connected. CORPAC International

TEMPE: 2323 W. University Drive, Tempe, AZ 85281 | 480.966.2301  
SCOTTSDALE: 8777 N. Gainey Center Dr., Suite 245, Scottsdale, AZ 85258 | www.cpiaz.com

# 15567 & 15569 E U.S. HIGHWAY 60

GOLD CANYON, AZ 85118 | INDUSTRIAL LAND FOR SALE

PREVIOUSLY APPROVED PLANS FOR COVERED RV/BOAT STORAGE

\$2,200,000 (\$3.05 PSF)



## BUILDINGS ON SITE

- ± 960 SF House
- ± 1,000 SF Warehouse
- Includes power and well

For More Information, Please Contact:

**Andy Jaffe**  
D 480.214.1132  
M 602.330.8777  
ajaffe@cpiaz.com

**Rex Griswold**  
M 480.244.7222  
rgriswold@cpiaz.com

**Paul Wood**  
M: 480.420.7460  
pwoods@cpiaz.com



**COMMERCIAL PROPERTIES INC.**

Locally Owned. Globally Connected. CRPAC International

TEMPE: 2323 W. University Drive, Tempe, AZ 85281 | 480.966.2301  
SCOTTSDALE: 8777 N. Gainey Center Dr., Suite 245, Scottsdale, AZ 85258 | www.cpiaz.com

# 15567 & 15569 E U.S. HIGHWAY 60

GOLD CANYON, AZ 85118 | INDUSTRIAL LAND FOR SALE

PREVIOUSLY APPROVED PLANS FOR COVERED RV/BOAT STORAGE

\$2,200,000 (\$3.05 PSF)

## Renovated House On Premises

60

### PROPERTY DETAILS

- Site: ± 16.55 Acres
- Water, Electric, and Septic on Property
- ±2 Acres on Highway 60 Zoned CB-2 (Business)
- ±14 Acres Zoned C1-I (Light Industrial)
- ±960 SF House
- ±1,000 SF Warehouse



**COMMERCIAL PROPERTIES INC.**

Locally Owned. Globally Connected. CPPIAC International

TEMPE: 2323 W. University Drive, Tempe, AZ 85281 | 480.966.2301  
SCOTTSDALE: 8777 N. Gainey Center Dr., Suite 245, Scottsdale, AZ 85258 | www.cpi.az.com

For More Information, Please Contact:

**Rex Griswold**  
M 480.244.7222  
rgriswold@cpi.az.com

**Andy Jaffe**  
D 480.214.1132  
M 602.330.8777  
ajaffe@cpi.az.com

**Paul Wood**  
M: 480.420.7460  
pwoods@cpi.az.com