

CAMPBELL

TECHNOLOGY PARK

±6,811 SF TO ±44,043 SF
OFFICE / R&D FOR LEASE

LIAM MARTIN
+1 408 436 3619
liam.martin@cushwake.com
LIC #02081625

STEVE PACE
+1 408 482 7037
steve.pace@cushwake.com
LIC #00817396

DAN HOLLINGSWORTH
+1 408 615 3431
dan.hollingsworth@cushwake.com
LIC #01117716



CAMPBELL

TECHNOLOGY PARK



SITE PLAN

655 CAMPBELL PKWY
±13,771 to ±29,741 SF

695 CAMPBELL PKWY
±6,811 to ±44,043 SF



ADJACENT TO EDITH MORLEY STATE PARK | 4 ACRES

AMENITIES INCLUDE:

- Community Garden
- Restrooms
- 8 Picnic Tables
- Open Turf Area
- Wildflowers
- Marsh

CAMPBELL

TECHNOLOGY PARK

BUILDING HIGHLIGHTS

**±6,811 SF TO ±44,043 SF
OFFICE / R&D FOR LEASE**

- High Image Corporate Office/R&D Park
- Desirable West Valley location
- High-End Market Ready Interiors
- 3.8/1,000 Parking
- Grade and Dock Loading
- Adjacent to 4 Acre Community Park
- Par Course Jogging Trail Around Perimeter of Project
- Call to Tour

CAMPBELL

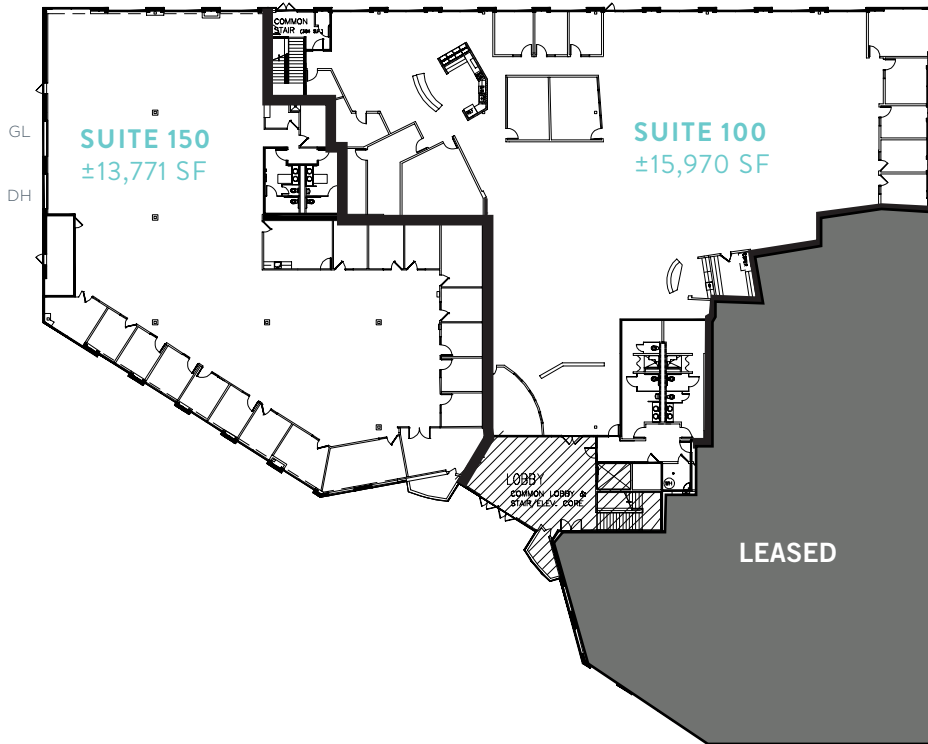
TECHNOLOGY PARK



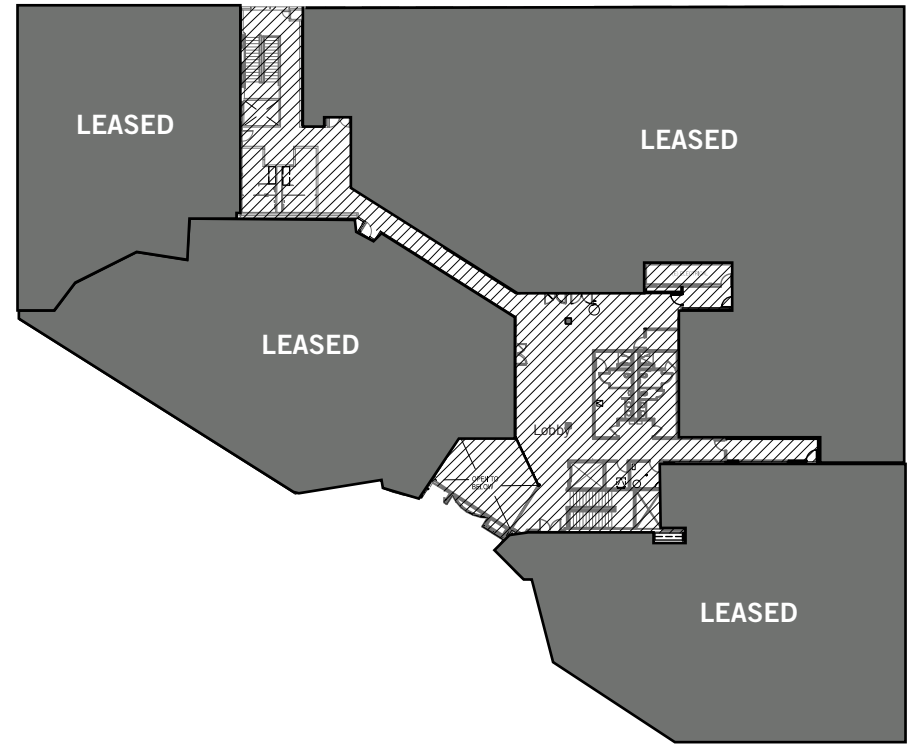
FLOOR PLAN

655 CAMPBELL TECHNOLOGY PARKWAY

FIRST FLOOR



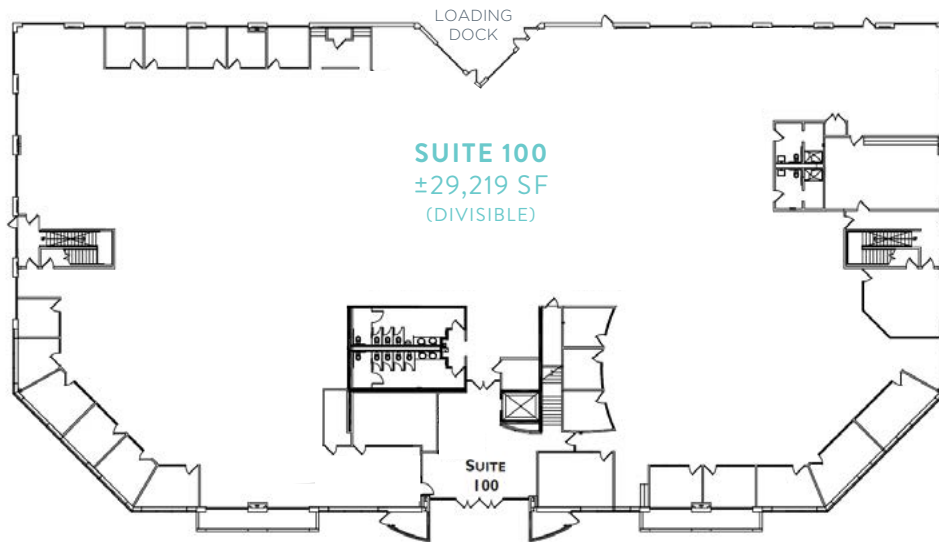
SECOND FLOOR



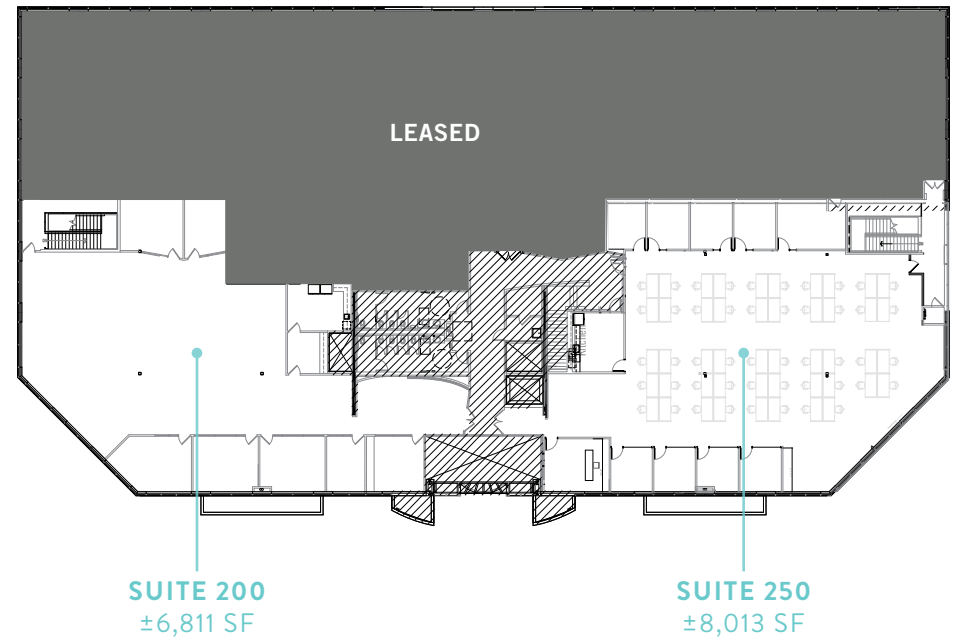
FLOOR PLAN

695 CAMPBELL TECHNOLOGY PARKWAY

FIRST FLOOR



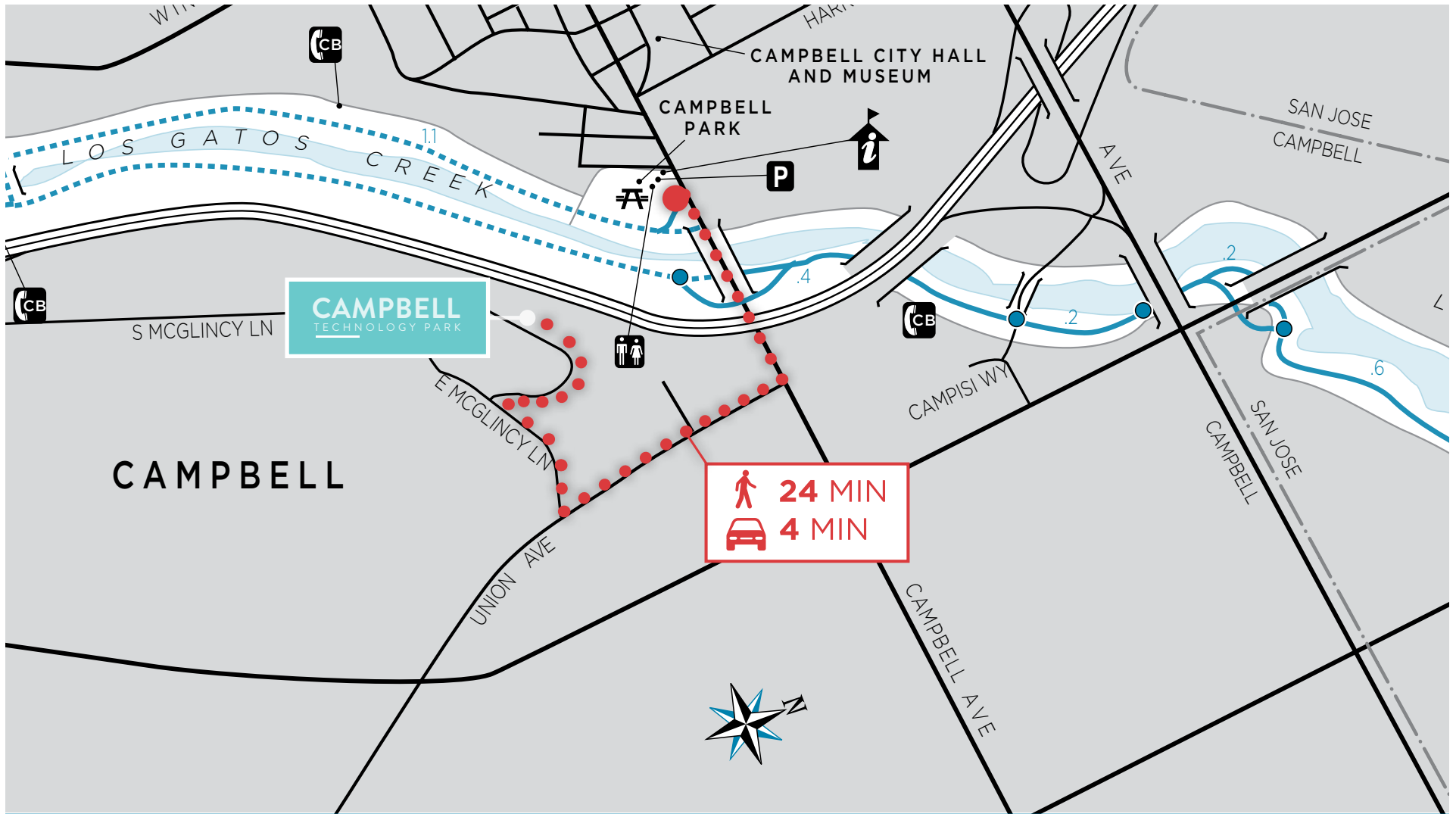
SECOND FLOOR



TRANSPORTATION & AMENITIES



TRANSPORTATION & AMENITIES



- | | | | | | | | |
|---|---------------------------------|---|----------------------|---|---------------------|---|--------------------------|
|  | Park Entrance Kiosk/Information |  | Call Box |  | Picnic Area |  | Paved Multiple Use Trail |
|  | Restrooms |  | Parking/Trail Access |  | Two Lane Paved Road |  | PAR Course |