

PARK EAST

18005 - 18211 NE 68th Street | Redmond

FEATURES

- » **Generous parking:** 3 stalls / 1,000 SF
- » **Close proximity** to services
- » **Excellent access** off SR-520 and from Sammamish Plateau, Redmond, and Woodinville

AVAILABILITY

- » **Suite D100** - 9,088 SF

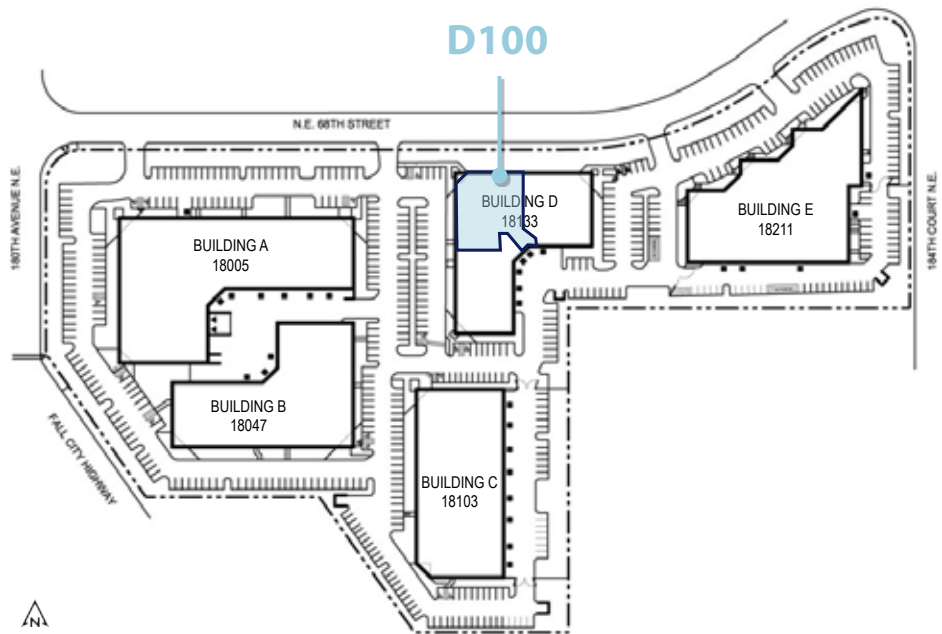


PARK EAST

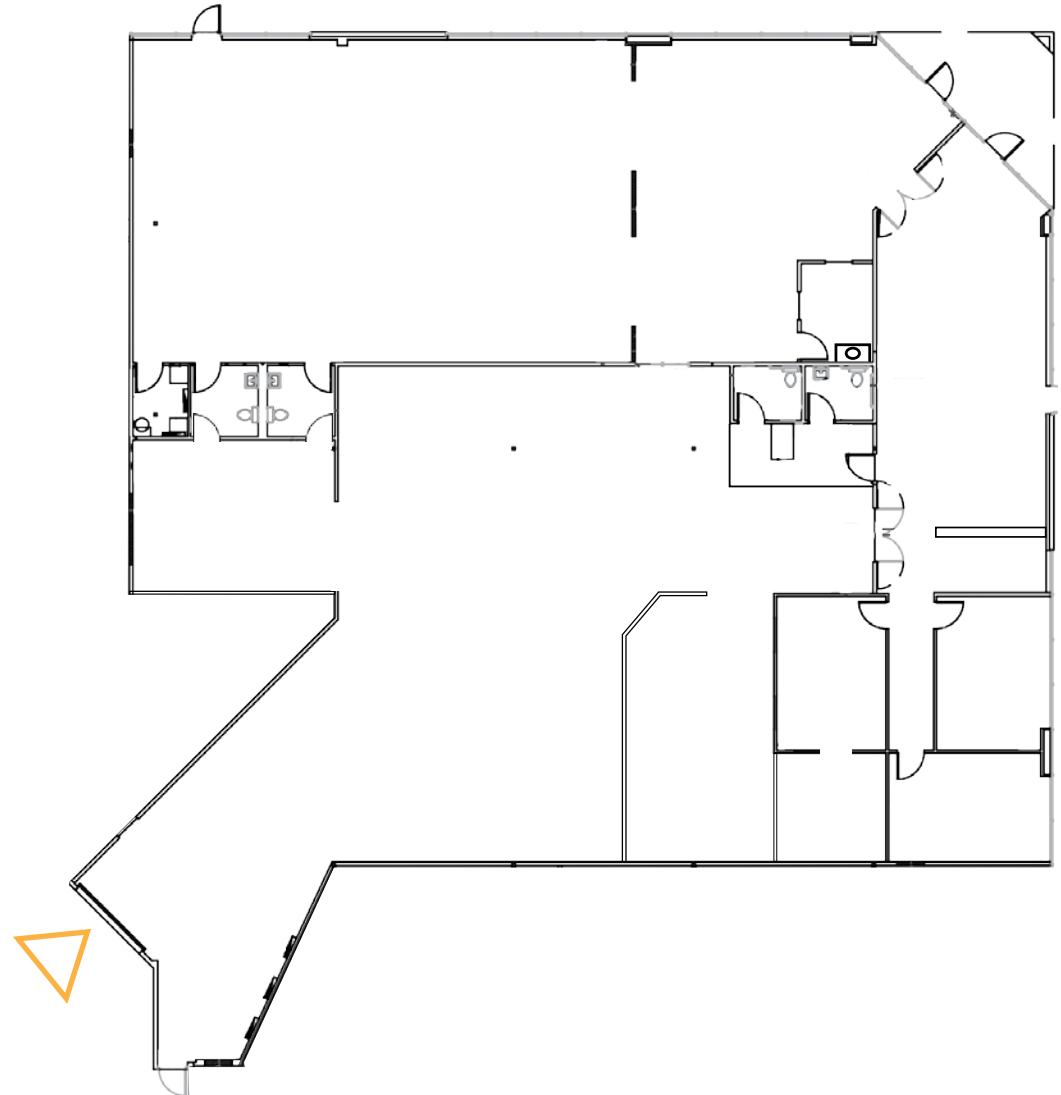
18005 - 18211 NE 68th Street | Redmond

Suite D100 - 9,088 SF

- » Available Now
- » Approx. 7,706 SF - Warehouse
- » Approx. 1,382 SF - Office



 GRADE LEVEL DOOR





PARK EAST

18005 - 18211 NE 68th Street | Redmond

Area Amenities

SELECT LIST WITHIN 3 MINUTES

RESTAURANTS

- 1 POMEGRANATE BISTRO-LISA DUPAR CATERING
- 2 BJ'S RESTAURANT & BREWHOUSE
- 3 CHIPOTLE MEXICAN GRILL
- 4 CLAIM JUMPER
- 5 PANERA BREAD
- 6 TYPHOON
- 7 SUBWAY
- 8 MAC & JACK'S BREWERY

RETAIL

- 9 WHOLE FOODS
- 10 TRADER JOE'S
- 11 FRED MEYER
- 12 HOME DEPOT
- 13 MACY'S
- 14 BANK OF AMERICA
- 15 TARGET
- 16 REI

TRANSPORTATION

- F FREEWAY
- B BUS
- P PARK & RIDE
- FUTURE LINK LIGHT RAIL STATION

SERVICES

- 17 GOLD'S GYM
- 18 SAMAMMISH CLEANERS
- 19 UPS STORE
- 20 US POST OFFICE
- 21 FEDEX OFFICE & PRINT

