



37 WEST 20TH STREET, New York, NY 10011



126,470.00 SF

Up To 3,412 SF Available

This 12 story first class office building, located in the heart of the Flatiron District, features 24/7 hour building security, renovated lobby and common areas, new bathrooms, new windows and new elevators. Located in landmark district. Built: 1909 Architect: Sommerfeld & Franke

#### Tenants

Maggie Burns, Principal

Marie Pense Center LLC

Steve Stone

Sheri Callan

Zero Industry Sport N.A. Inc.

For more information call

1- 212- 564- 6662

OLMSTEAD PROPERTIES

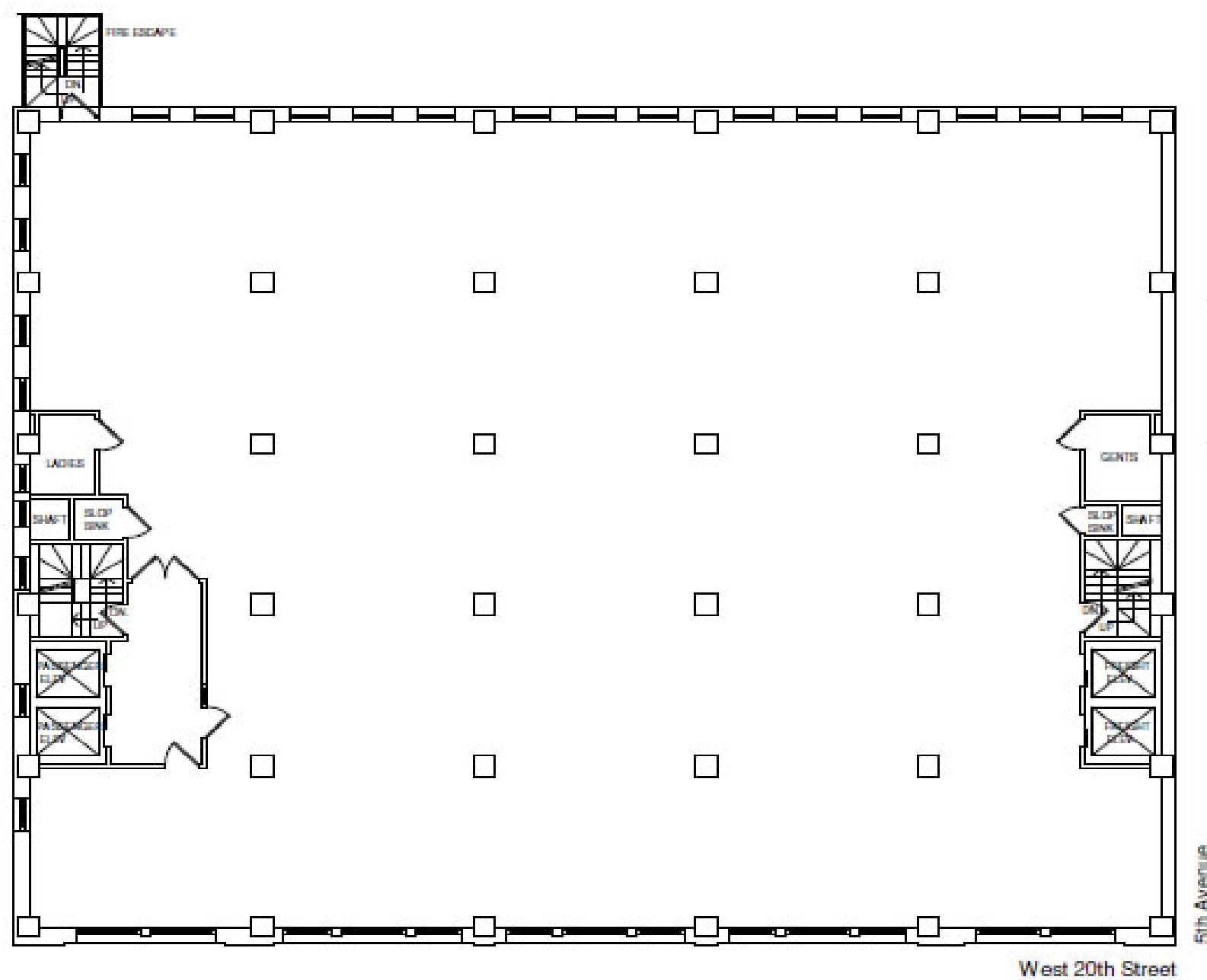
575 Eighth Avenue, Suite 2400

New York, NY 10018

[info@olmsteadinc.com](mailto:info@olmsteadinc.com)



37 WEST 20TH STREET, New York, NY 10011



Leasing and Managing Agent



575 Eighth Avenue, Suite 2400  
New York, NY 10018  
(212) 564-6662  
Fax: (212) 564-6667  
[www.olmsteadinc.com](http://www.olmsteadinc.com)

Typical Floor Plan

All areas and dimensions  
are approximate. Field  
verification is necessary.  
Date Printed: 1/30/2014

For more information call  
1- 212- 564- 6662  
OLMSTEAD PROPERTIES  
575 Eighth Avenue, Suite 2400  
New York, NY 10018  
[info@olmsteadinc.com](mailto:info@olmsteadinc.com)