

# PALOMAR PLAZA

2225, 2245, 2265

CAMINO VIDA ROBLE | CARLSBAD, CA 92008

## FLEX/INDUSTRIAL SPACE FOR LEASE



4,656 SF - 19,099 SF

DANIEL KNOKE  
(760) 929-7836  
dknoke@lee-associates.com  
CalBRE Lic#01215373

PETER MERZ  
(760) 448-1362  
pmerz@lee-associates.com  
CalBRE Lic#01269042

LEE & ASSOCIATES CRE SERVICES - NSDC, INC.  
1900 Wright Place, Suite 200  
Carlsbad, CA 92008  
www.lee-associates.com

 **LEE &  
ASSOCIATES**  
COMMERCIAL REAL ESTATE SERVICES

# PALOMAR PLAZA

2225, 2245, 2265

CAMINO VIDA ROBLE | CARLSBAD, CA 92008

# Property Information & Maps

## PROPERTY DETAILS

- 4,656 SF - 19,099 SF Industrial Suites
- Parking: 3/1,000 SF
- 16' Minimum Clear Height
- Quick access to I-15 & El Camino Real
- Drive Around Truck Access
- Fire Sprinklers



DANIEL KNOKE  
(760) 929-7836  
dknoke@lee-associates.com  
CalBRE Lic#01215373

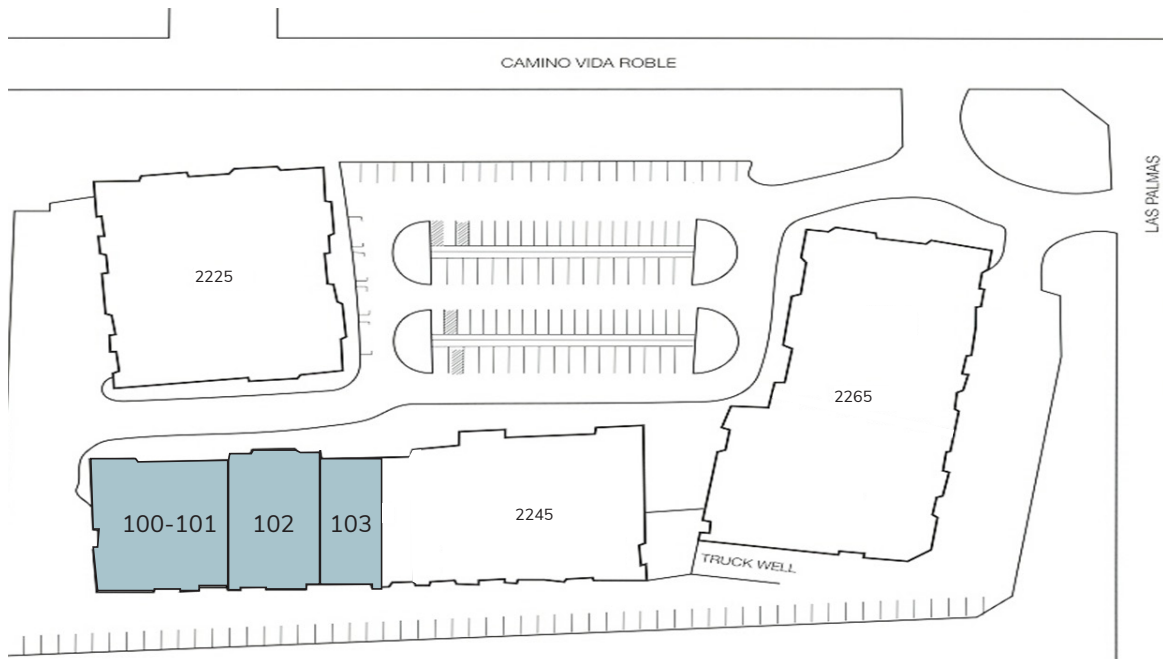
PETER MERZ  
(760) 448-1362  
pmerz@lee-associates.com  
CalBRE Lic#01269042

LEE & ASSOCIATES CRE SERVICES - NSDC, INC.  
1900 Wright Place, Suite 200  
Carlsbad, CA 92008  
www.lee-associates.com

**LEE & ASSOCIATES**  
COMMERCIAL REAL ESTATE SERVICES

## 2245 CAMINO VIDA ROBLE

| Suite   | Square Feet | Description  | Rate      | Grade Level | Access                       |
|---------|-------------|--|-----------|-------------|------------------------------|
| 100-101 | 9,330 SF    | Reception, 14 offices, 2 conference rooms, 2 restrooms, lunch room, drop ceilings manufacturing area & warehouse | \$1.10 IG | 2           | Call to Show<br>July 1, 2018 |
| 102     | 5,113 SF    | Reception, 4 offices, 2 restrooms & warehouse  | \$1.03 IG | 2           | Call to Show<br>July 1, 2018 |
| 100-102 | 14,443 SF   | Reception, 18 offices, 4 conference rooms, 4 restrooms, lunch room, drop ceilings manufacturing area & warehouse | \$1.10 IG | 4           | Call to Show<br>July 1, 2018 |
| 103     | 4,656 SF    | Shell - Owner will build, reception, 1 office, 1 restroom, 10% office.   | \$1.03 IG | 1           | Call to Show<br>30-60 Days   |



**DANIEL KNOKE**  
 (760) 929-7836  
[dknoke@lee-associates.com](mailto:dknoke@lee-associates.com)  
 CalBRE Lic#01215373

**PETER MERZ**  
 (760) 448-1362  
[pmerz@lee-associates.com](mailto:pmerz@lee-associates.com)  
 CalBRE Lic#01269042

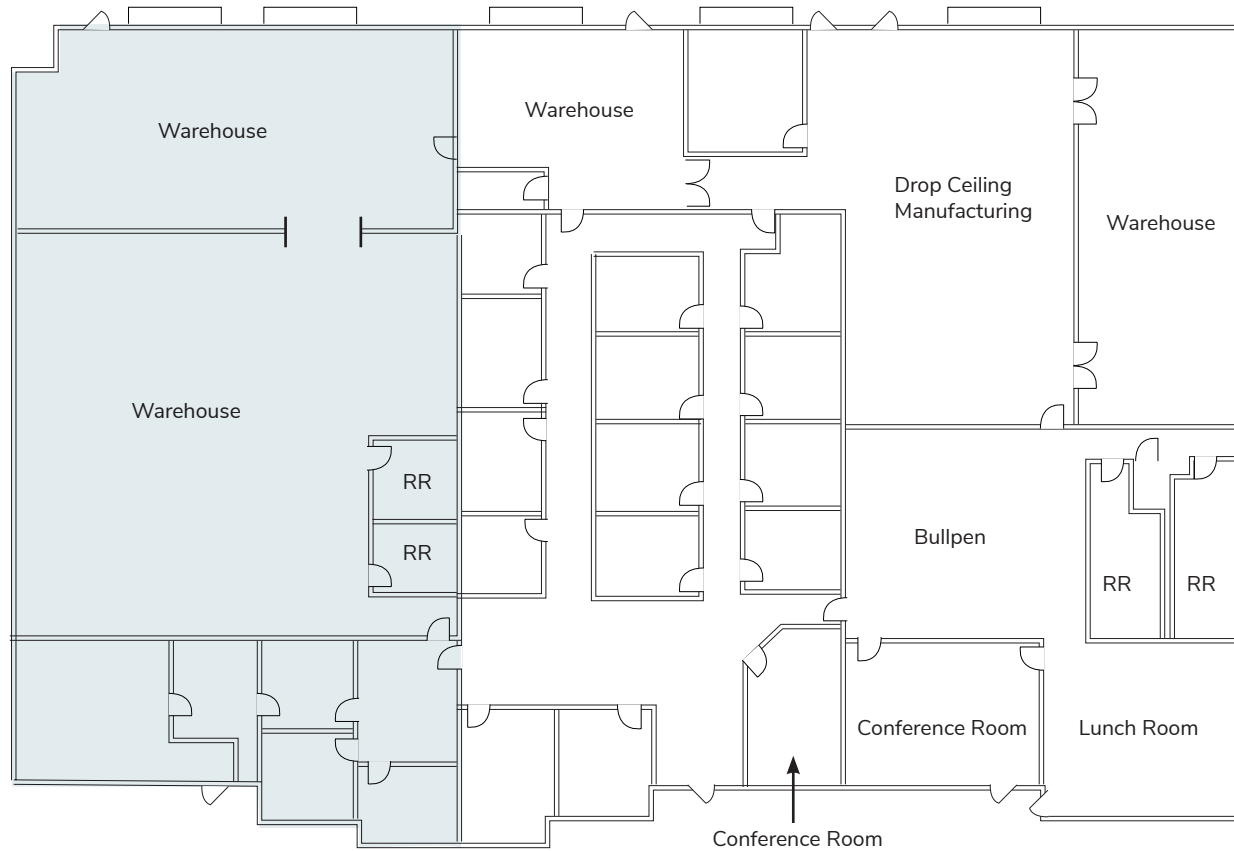
All information furnished regarding property for sale, rental or financing is from sources deemed reliable, but no warranty or representation is made to the accuracy thereof and same is submitted to errors, omissions, change of price, rental or other conditions prior to sale, lease or financing or withdrawal without notice. No liability of any kind is to be imposed on the broker herein.

## 2245

Camino Vida Roble

SUITE 102

SUITE 100-101



\*Suite 102 can be demised from suite 100-101.