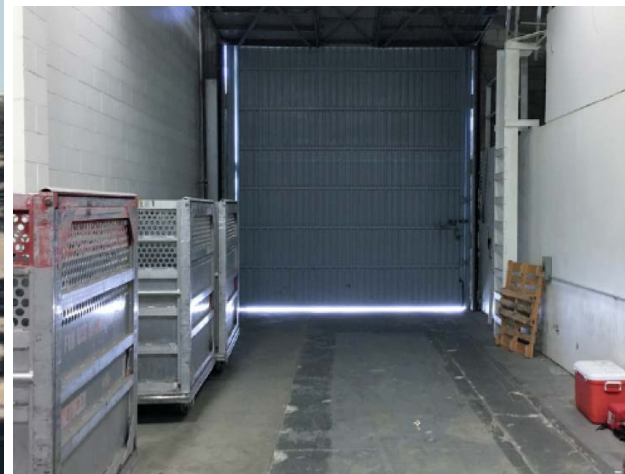


FOR LEASE | 5,000 SF

Industrial Warehouse

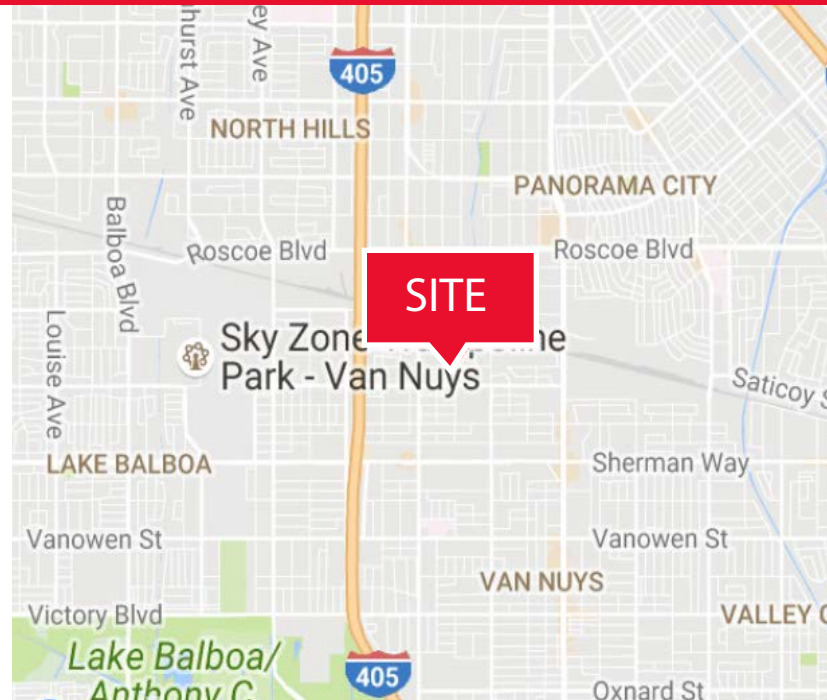
SPECTRUM
COMMERCIAL REAL ESTATE, INC.



7636 Burnet Ave Unit B, Van Nuys, CA 91405

PROPERTY FEATURES

- 5,000 SF Available
- Zoning: LACM
- Clean Warehouse Space located in a Prime Van Nuys Location
- Well Maintained Facility
- 17' Min. Warehouse Clear
- Warehouse Racking in Place
- One Office and Shared Conference Room can be Combined with the Space
- Excellent Loading, Secured Building and Parking Area
- Minutes from Amenities and Freeway Onramp



Yair Haimoff, SIOR
Executive Managing Director
(818) 203-5429
yhaimoff@spectrumcre.com
CA BRE# 01414758

Andrew Ghassemi
Vice President
(661) 212-3956
aghassemi@spectrumcre.com
CA BRE#01963548

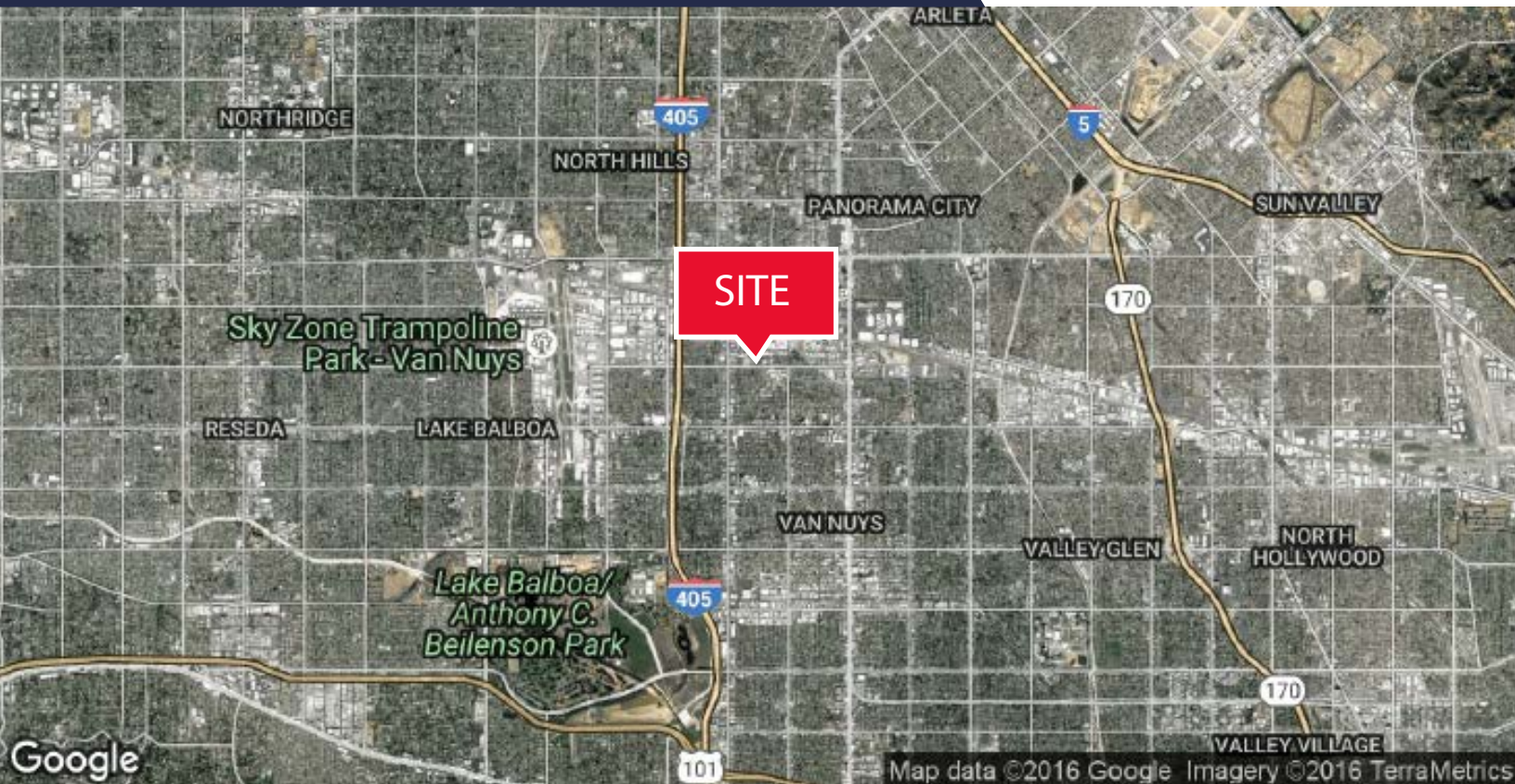
No warranty, express or implied, is made as to the accuracy of the information contained herein. This information is submitted subject to errors, omissions, change of price, rental other conditions, withdrawal without notice, and is subject to any special listing conditions imposed by our principals. Cooperating brokers, buyers, tenants and other parties receive this document should not rely on it, but should use it as a starting point of analysis, and should independently confirm the accuracy of the information contained herein a due diligence review of the books, records, files and documents that constitute sources of the information described herein. Logos are for identification purposes only may be trademarks of their respective companies. Spectrum Commercial Real Estate, Inc., CA BRE #02042805

FOR LEASE | 5,000 SF

Industrial Warehouse

SPECTRUM

COMMERCIAL REAL ESTATE, INC.



Yair Haimoff, SIOR
Executive Managing Director
(818) 203-5429
yhaimoff@spectrumcre.com
CA BRE# 01414758

Andrew Ghassemi
Vice President
(661) 212-3956
aghassemi@spectrumcre.com
CA BRE#01963548

No warranty, express or implied, is made as to the accuracy of the information contained herein. This information is submitted subject to errors, omissions, change of price, rental other conditions, withdrawal without notice, and is subject to any special listing conditions imposed by our principals. Cooperating brokers, buyers, tenants and other parties receive this document should not rely on it, but should use it as a starting point of analysis, and should independently confirm the accuracy of the information contained herein a due diligence review of the books, records, files and documents that constitute sources of the information described herein. Logos are for identification purposes only may be trademarks of their respective companies. Spectrum Commercial Real Estate, Inc., CA BRE #02042805