



**COLDWELL
BANKER
COMMERCIAL**

**MCGUIRE MEARS &
ASSOCIATES**

FOR LEASE

MCGUIREMEARS.COM

ROSE POINTE CENTER

\$10.00 SF/yr (NNN)

4407 Milton Ave
Janesville, WI 53546

AVAILABLE SPACE
1,500 - 3,985 SF

AREA
Located on service drive across Milton Ave from Woodcrest Dr.



OFFICE

Mandy Witt
608 314 8252
mandy@mcguiremears.com

©2021 Coldwell Banker. All Rights Reserved. Coldwell Banker and the Coldwell Banker Commercial logos are trademarks of Coldwell Banker Real Estate LLC. The Coldwell Banker® System is comprised of company owned offices which are owned by a subsidiary of Realogy Brokerage Group LLC and franchised offices which are independently owned and operated. The Coldwell Banker System fully supports the principles of the Equal Opportunity Act.

**COLDWELL BANKER COMMERCIAL
MCGUIRE MEARS & ASSOCIATES**
400 Midland Court, Suite 101, Janesville, WI 53546
608.752.6325



ROSE POINTE CENTER

4407 Milton Ave, Janesville, WI 53546

LEASE



OFFERING SUMMARY

Available SF:	1,500 - 3,985 SF
Lease Rate:	\$10.00 SF/yr (NNN)
Lot Size:	1.43 Acres
Year Built:	2008
Building Size:	9,650 SF
Zoning:	B-4

PROPERTY OVERVIEW

Office or retail space for lease in Janesville, WI. Rose Pointe Center is conveniently located on Hwy 26/Milton Ave near I-39/90 with excellent visibility on major traffic corridor. Development offers flexible suite sizes available for both office and retail tenants. Space deliverable in either white box/vanilla shell or with tenant improvements.

AVAILABLE SPACES

SPACE	LEASE RATE	SIZE (SF)
Available Space	\$10.00 SF/yr	1,500 - 3,985 SF

DEMOGRAPHICS

	1 MILE	5 MILES	10 MILES
Total Households	838	23,213	45,632
Total Population	2,243	57,014	114,266
Average HH Income	\$73,359	\$61,939	\$61,995

MCGUIREMEARS.COM

Mandy Witt
608 314 8252
mandy@mcguiremears.com

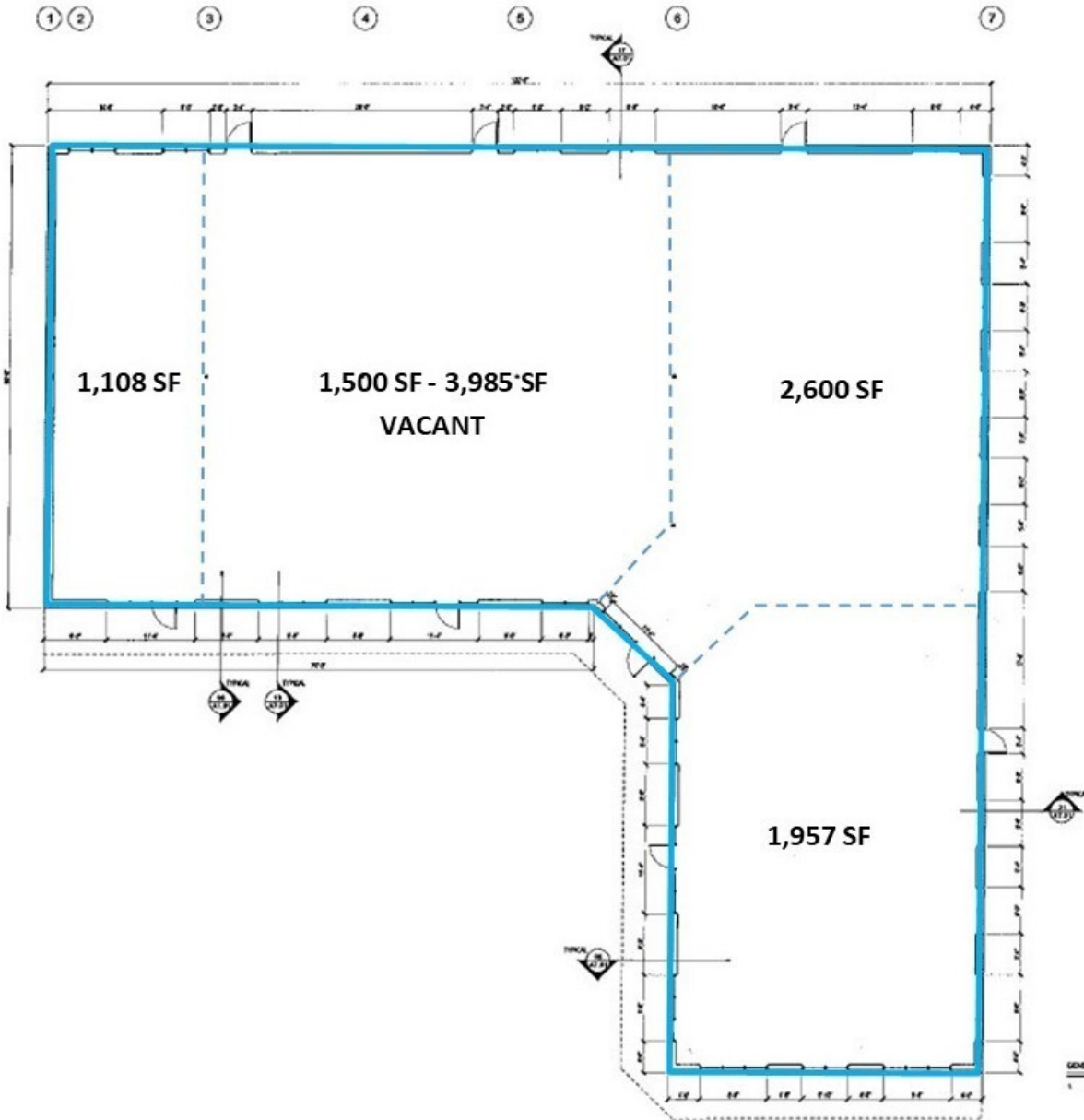




ROSE POINTE CENTER

4407 Milton Ave, Janesville, WI 53546

LEASE



FIRST FLOOR PLAN
SCALE: 1/8" = 1'-0"

MCGUIREMEARS.COM

Mandy Witt
608 314 8252
mandy@mcguiremears.com

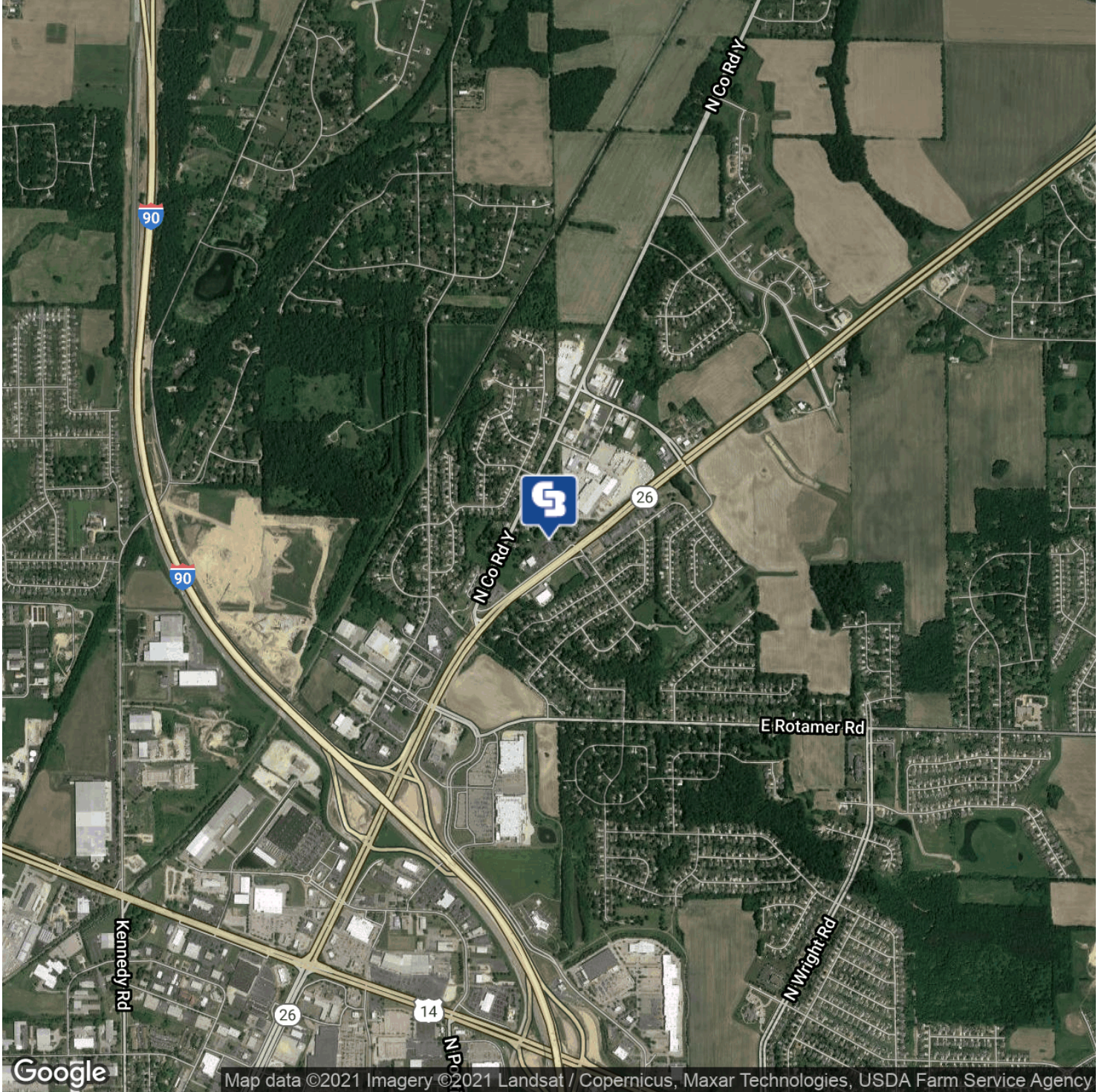
 **COLDWELL
BANKER
COMMERCIAL**
MCGUIRE MEARS &
ASSOCIATES



ROSE POINTE CENTER

4407 Milton Ave, Janesville, WI 53546

LEASE



MCGUIREMEARS.COM

Mandy Witt
608 314 8252
mandy@mcguiremears.com



MCGUIRE MEARS &
ASSOCIATES

STATE OF WISCONSIN

BROKER DISCLOSURE TO NON-RESIDENTIAL CUSTOMERS

Wisconsin law requires all real estate licensees to give the following information about brokerage services to prospective customers.

Prior to negotiating on your behalf the brokerage firm, or an agent associated with the firm, must provide you the following disclosure statement:

BROKER DISCLOSURE TO CUSTOMERS

You are the customer of the brokerage firm (hereinafter Firm). The Firm is either an agent of another party in the transaction or a subagent of another firm that is the agent of another party in the transaction. A broker or a salesperson acting on the behalf of the Firm may provide brokerage services to you. Whenever the Firm is providing brokerage services to you, the Firm and its brokers and salespersons (hereinafter Agents) owe you, the customer, the following duties:

- The duty to provide brokerage services to you fairly and honestly.
- The duty to exercise reasonable skill and care in providing brokerage services to you.
- The duty to provide you with accurate information about market conditions within a reasonable time if you request it, unless disclosure of the information is prohibited by law.
- The duty to disclose to you in writing certain Material Adverse Facts about a property, unless disclosure of the information is prohibited by law (see "Definition of Material Adverse Facts" below).
- The duty to protect your confidentiality. Unless the law requires it, the Firm and its Agents will not disclose your confidential information or the confidential information of other parties (see "Confidentiality Notice to Customers" below).
- The duty to safeguard trust funds and other property held by the Firm or its Agents.
- The duty, when negotiating, to present contract proposals in an objective and unbiased manner and disclose the advantages and disadvantages of the proposals.

Please review this information carefully. An Agent of the Firm can answer your questions about brokerage services, but if you need legal advice, tax advice, or a professional home inspection, contact an attorney, tax advisor, or home inspector.

This disclosure is required by section 452.135 of the Wisconsin statutes and is for information only. It is a plain-language summary of a broker's duties to a customer under section 452.133(1) of the Wisconsin statutes.

CONFIDENTIALITY NOTICE TO CUSTOMERS

The Firm and its Agents will keep confidential any information given to the Firm and its Agents in confidence, or any information obtained by the Firm and its Agents that a reasonable person would want to be kept confidential, unless the information must be disclosed by law or you authorize the Firm to disclose particular information. The Firm and its Agents shall continue to keep the information confidential after the Firm is no longer providing brokerage services to you.

The following information is required to be disclosed by law.

1. Material Adverse Facts, as defined in Wis. Stat. § 452.01(5g) (see "Definition of Material Adverse Facts" below).
2. Any facts known by the Firm or its Agents that contradict any information included in a written inspection report

on the property or real estate that is the subject of the transaction.

To ensure that the Firm and its Agents are aware of what specific information you consider confidential, you may list that information below or provide that information to the Firm or its Agents by other means. At a later time, you may also provide the Firm or its Agents with other information you consider to be confidential.

CONFIDENTIAL INFORMATION: _____

NON-CONFIDENTIAL INFORMATION (The following information may be disclosed by the Firm and its Agents): _____

(Insert information you authorize to be disclosed, such as financial qualification information.)

DEFINITION OF MATERIAL ADVERSE FACTS

A "Material Adverse Fact" is defined in Wis. Stat. § 452.01(5g) as an Adverse Fact that a party indicates is of such significance, or that is generally recognized by a competent licensee as being of such significance to a reasonable party, that it affects or would affect the party's decision to enter into a contract or agreement concerning a transaction or affects or would affect the party's decision about the terms of such a contract or agreement.

An "Adverse Fact" is defined in Wis. Stat. § 452.01(1e) as a condition or occurrence that a competent licensee generally recognizes will significantly and adversely affect the value of the property, significantly reduce the structural integrity of improvements to real estate, or present a significant health risk to occupants of the property; or information that indicates that a party to a transaction is not able to or does not intend to meet his or her obligations under a contract or agreement made concerning the transaction.

NOTICE ABOUT SEX OFFENDER REGISTRY

You may obtain information about the sex offender registry and persons registered with the registry by contacting the Wisconsin Department of Corrections on the internet at <http://www.doc.wi.gov> or by telephone at 608-240-5830.

No representation is made as to the legal validity of any provision or the adequacy of any provision on any specific transaction.