

# NEWBURY BUILDING

205 Newbury Street | Framingham, Massachusetts



## 4-Story, 56,865 SF Office Building

**205 Newbury Street** is a First Class Office Building with On Site Management and is located within Minutes to Mass Pike & Route 9. Verizon FIOS is available in all suites.

- 1,513 SF Available on the 4<sup>th</sup> Floor
- 6,910 sf available on the 1<sup>st</sup> Floor
- First Class Office Space
- On Site Management
- Verizon FIOS Available
- Minutes to Mass Pike & Route 9
- Local Ownership

**Lease Rate: \$23.50/RSF**

**For more information please contact:**

**Dean Blackey** 508-651-9019 [dblackey@rwholmes.com](mailto:dblackey@rwholmes.com)

**Craig Johnston** 508-651-9022 [cjohnston@rwholmes.com](mailto:cjohnston@rwholmes.com)

**Garry Holmes** 508-655-5626 [gholmes@rwholmes.com](mailto:gholmes@rwholmes.com)

**R.W. HOLMES**  
COMMERCIAL REAL ESTATE

321 Commonwealth Road, Suite 202, Wayland, MA. 01778 | Phone (508) 655-5626 [www.rwholmes.com](http://www.rwholmes.com)

*All information furnished regarding property for sale, rental or financing is from sources deemed reliable. No representation is made as to the accuracy thereof and is submitted subject to errors, omissions, change of price, rental or other conditions, prior sale, lease or financing, or withdrawal without notice.*

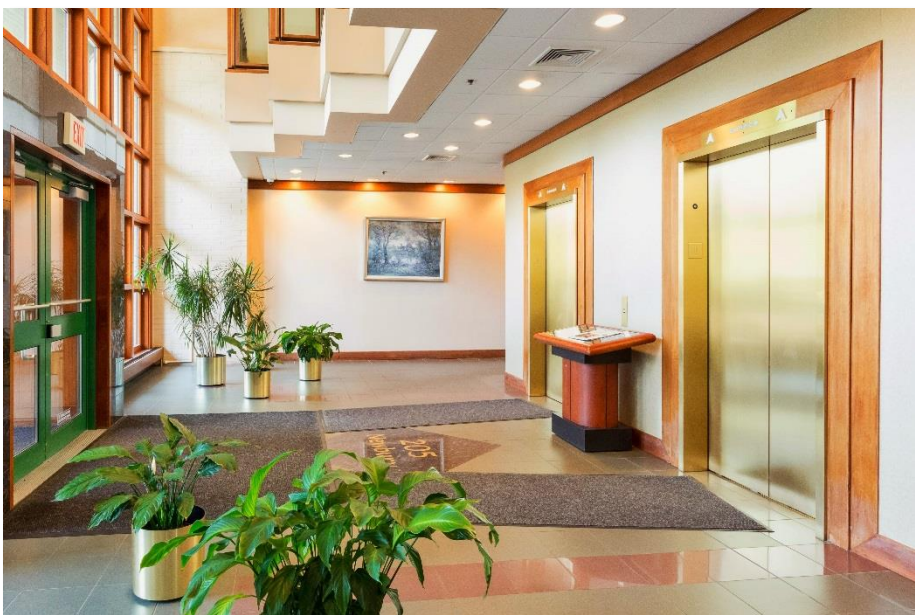


# NEWBURY BUILDING

205 Newbury Street | Framingham, Massachusetts

## SPECIFICATIONS

- 58,000 SF on Four (4) Floors
- 6,910 SF on 1st Floor
- 1,513 SF on 4th Floor
- First Class Office Space
- On-Site Management
- Verizon FIOS Available
- Minutes to Mass Pike & Route 9
- 120 Free Surface Spaces
- Ratio of 5.26/1,000 SF
- Taxes: \$3.38/SF (2017)
- Two (2) Elevators
- 10' Slab to Slab
- Signage
- 2.79 Acres
- **Asking \$23.50/RSF**



For more information please contact:

**Dean Blackey** 508-651-9019 [dblackey@rwholmes.com](mailto:dblackey@rwholmes.com)

**Craig Johnston** 508-651-9022 [cjohnston@rwholmes.com](mailto:cjohnston@rwholmes.com)

**Garry Holmes** 508-655-5626 [gholmes@rwholmes.com](mailto:gholmes@rwholmes.com)

**R.W. HOLMES**  
COMMERCIAL REAL ESTATE

321 Commonwealth Road, Suite 202, Wayland, MA. 01778 | Phone (508) 655-5626 [www.rwholmes.com](http://www.rwholmes.com)

*All information furnished regarding property for sale, rental or financing is from sources deemed reliable. No representation is made as to the accuracy thereof and is submitted subject to errors, omissions, change of price, rental or other conditions, prior sale, lease or financing, or withdrawal without notice.*



# NEWBURY BUILDING

205 Newbury Street | Framingham, Massachusetts



For more information please contact:

**Dean Blackey** 508-651-9019 [dblackey@rwholmes.com](mailto:dblackey@rwholmes.com)

**Craig Johnston** 508-651-9022 [cjohnston@rwholmes.com](mailto:cjohnston@rwholmes.com)

**Garry Holmes** 508-655-5626 [gholmes@rwholmes.com](mailto:gholmes@rwholmes.com)

**R.W. HOLMES**  
COMMERCIAL REAL ESTATE

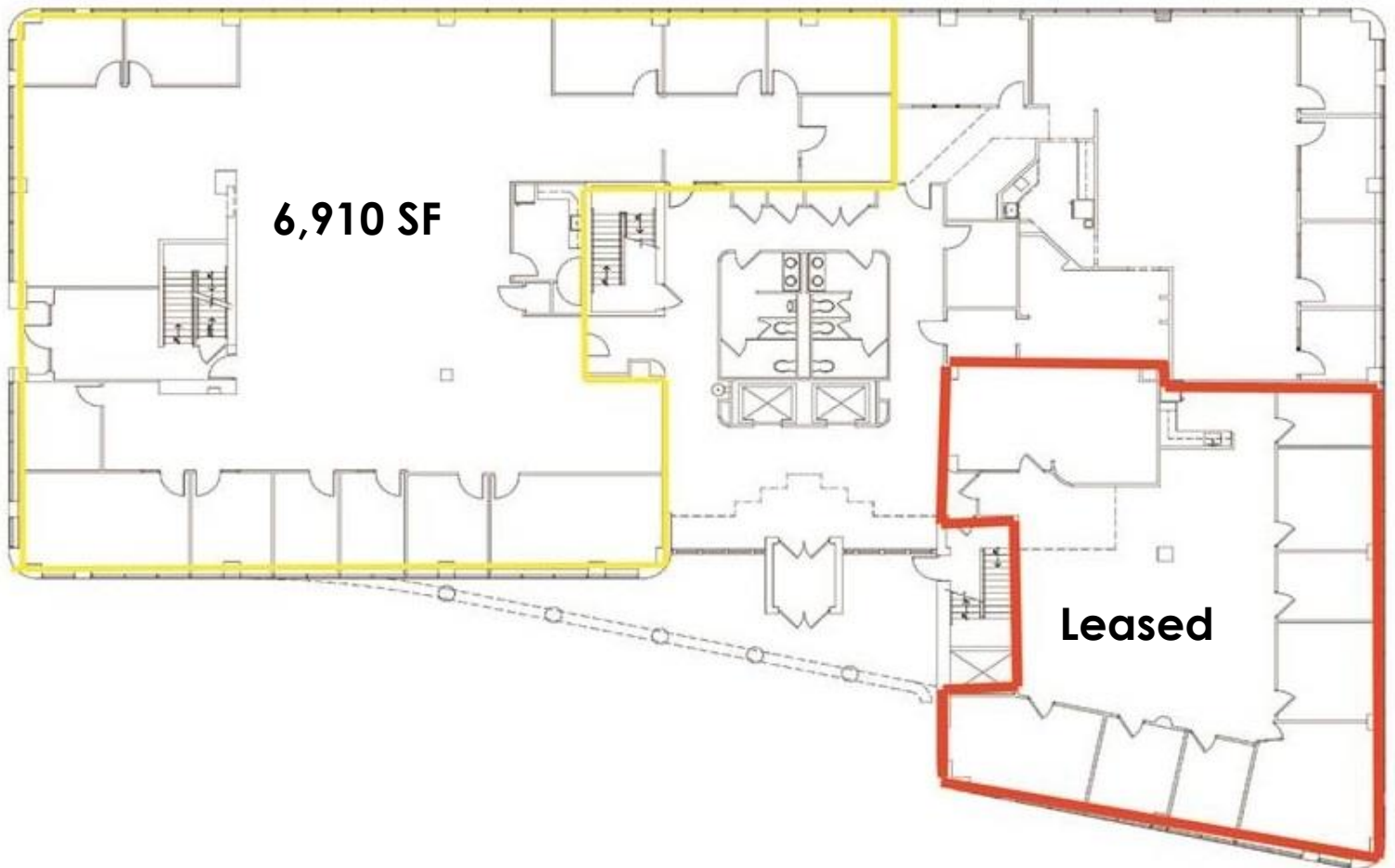
321 Commonwealth Road, Suite 202, Wayland, MA. 01778 | Phone (508) 655-5626 [www.rwholmes.com](http://www.rwholmes.com)

All information furnished regarding property for sale, rental or financing is from sources deemed reliable. No representation is made as to the accuracy thereof and is submitted subject to errors, omissions, change of price, rental or other conditions, prior sale, lease or financing, or withdrawal without notice.

# NEWBURY BUILDING

205 Newbury Street | Framingham, Massachusetts

**FIRST FLOOR PLAN**  
**6,920 SF**



**For more information please contact:**

**Dean Blackey** 508-651-9019 [dblackey@rwholmes.com](mailto:dblackey@rwholmes.com)

**Craig Johnston** 508-651-9022 [cjohnston@rwholmes.com](mailto:cjohnston@rwholmes.com)

**Garry Holmes** 508-655-5626 [gholmes@rwholmes.com](mailto:gholmes@rwholmes.com)

**R.W. HOLMES**  
COMMERCIAL REAL ESTATE

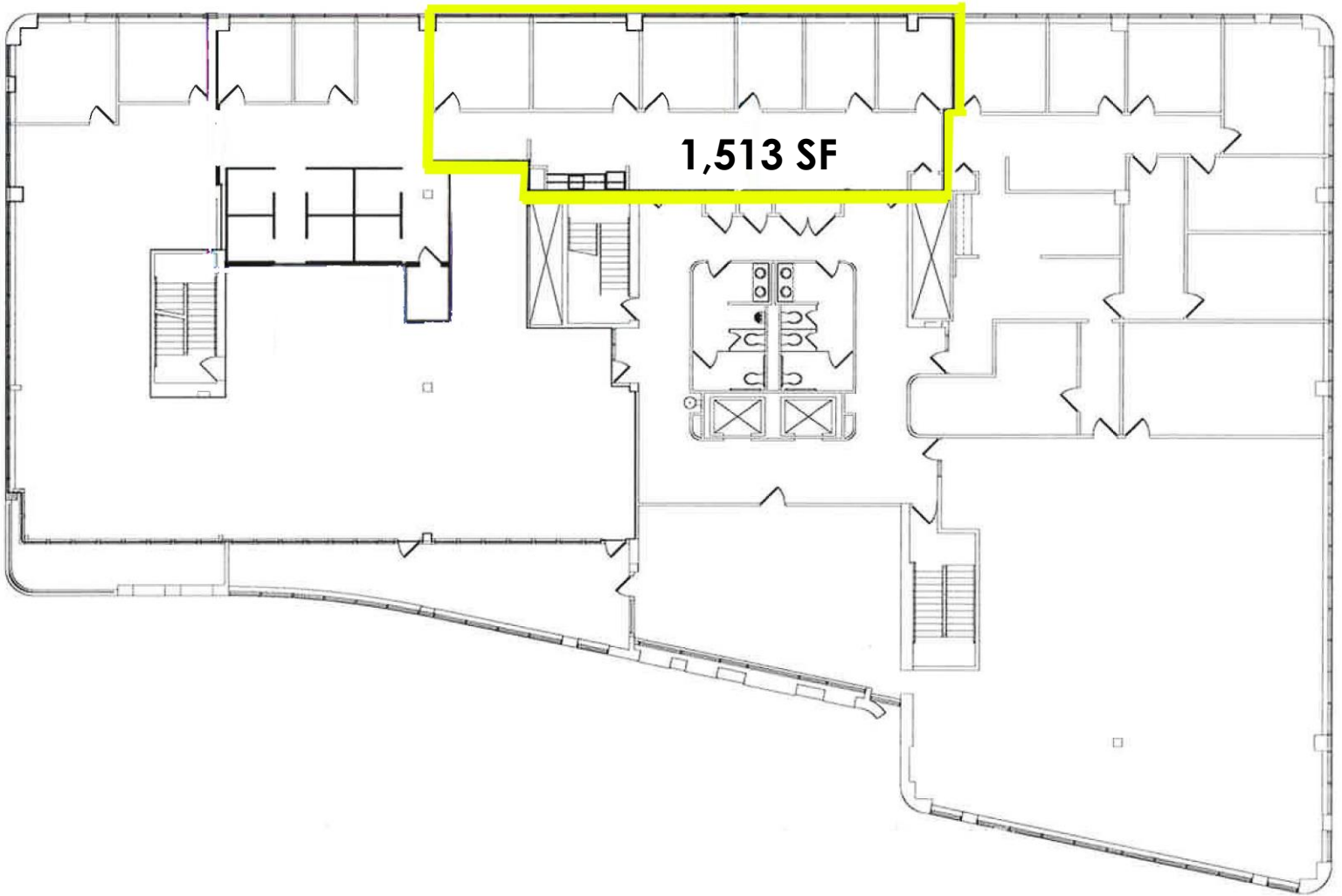
321 Commonwealth Road, Suite 202, Wayland, MA. 01778 | Phone (508) 655-5626 [www.rwholmes.com](http://www.rwholmes.com)

*All information furnished regarding property for sale, rental or financing is from sources deemed reliable. No representation is made as to the accuracy thereof and is submitted subject to errors, omissions, change of price, rental or other conditions, prior sale, lease or financing, or withdrawal without notice.*

# NEWBURY BUILDING

205 Newbury Street | Framingham, Massachusetts

**FOURTH FLOOR PLAN**  
**1,513 SF**



**For more information please contact:**

**Dean Blackey** 508-651-9019 [dblackey@rwholmes.com](mailto:dblackey@rwholmes.com)

**Craig Johnston** 508-651-9022 [cjohnston@rwholmes.com](mailto:cjohnston@rwholmes.com)

**Garry Holmes** 508-655-5626 [gholmes@rwholmes.com](mailto:gholmes@rwholmes.com)

**R.W. HOLMES**  
COMMERCIAL REAL ESTATE

321 Commonwealth Road, Suite 202, Wayland, MA. 01778 | Phone (508) 655-5626 [www.rwholmes.com](http://www.rwholmes.com)

*All information furnished regarding property for sale, rental or financing is from sources deemed reliable. No representation is made as to the accuracy thereof and is submitted subject to errors, omissions, change of price, rental or other conditions, prior sale, lease or financing, or withdrawal without notice.*