

# MEDICAL SPACE FOR LEASE

## 4456 BLACK AVENUE, SUITE 100, PLEASANTON

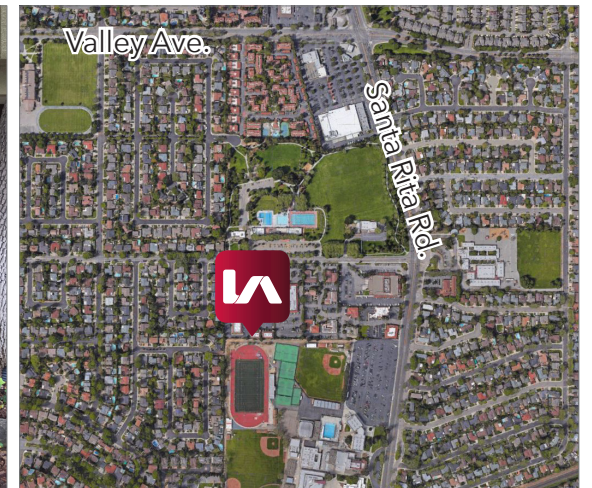
### LISTING DATA

AVAILABLE SF: 1,450±SF

PROPERTY TYPE: Medical/Office

#### PROPERTY INFORMATION:

- Class A ground floor medical space for lease
- Suite consists of 5 exam rooms, 1 lab, 1 private ADA restroom (with pass-through window to lab), 1 doctor's office with private entry, 1 kitchen, 1 nurses station, storage area, and a separate reception/waiting room
- Building has newer roof and HVAC systems
- Near downtown Pleasanton
- Close to shops, restaurants and more
- Available with 30 days notice



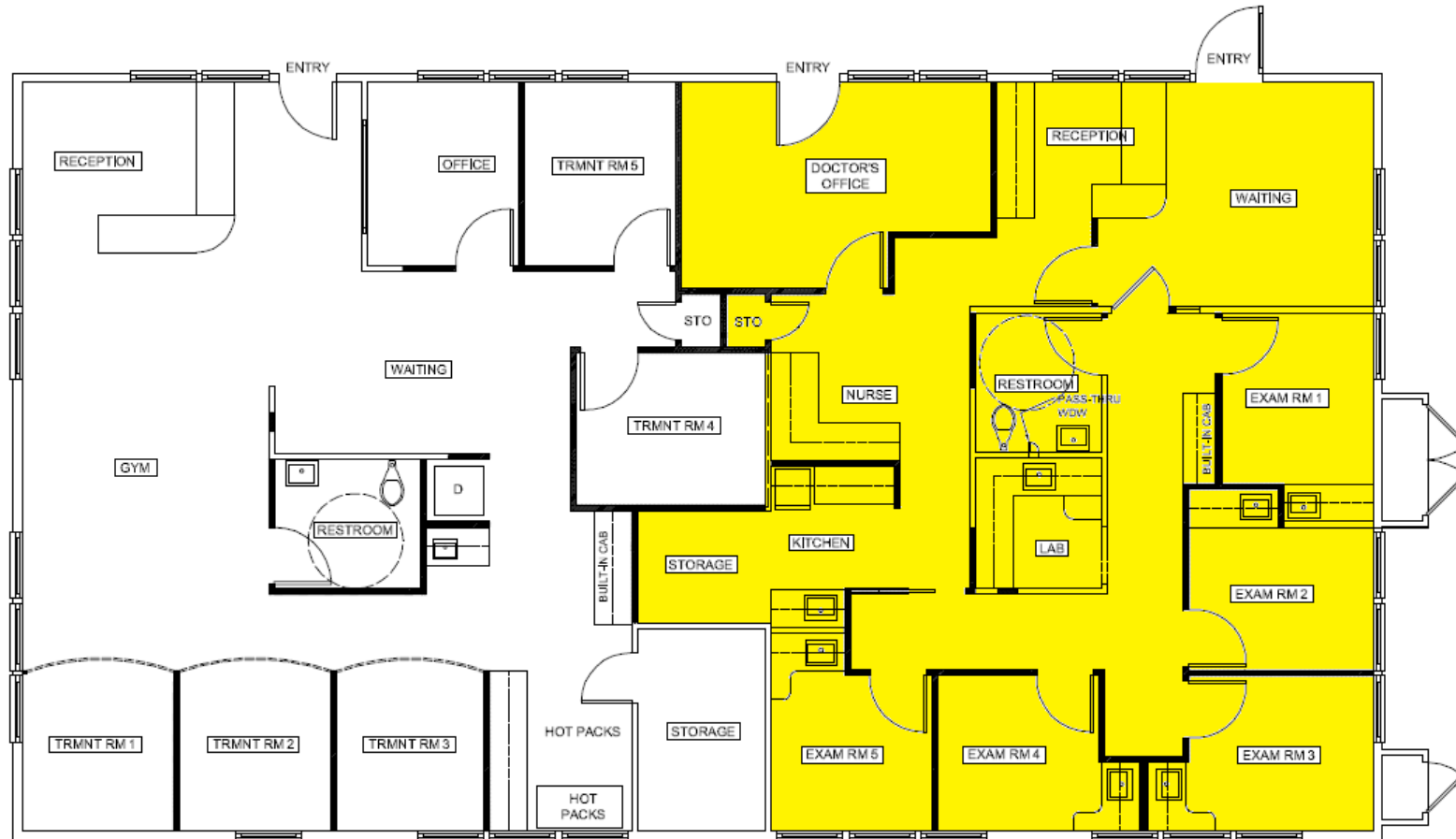
### ECONOMIC DATA

LEASE RATE: Call for Pricing

Mark Rinkle  
mrinkle@lee-associates.com  
D 925.737.4145  
LIC.ID#01512632

All information furnished regarding property for sale, rental or financing is from sources deemed reliable, but no warranty or representation is made to the accuracy thereof and same is submitted to errors, omissions, change of price, rental or other conditions prior to sale, lease or financing or withdrawal without notice. No liability of any kind is to be imposed on the broker herein.

**FLOOR PLAN**



**MEDICAL SPACE FOR LEASE**  
**4456 BLACK AVENUE, SUITE 100, PLEASANTON**

**INTERIOR PHOTOS**

