

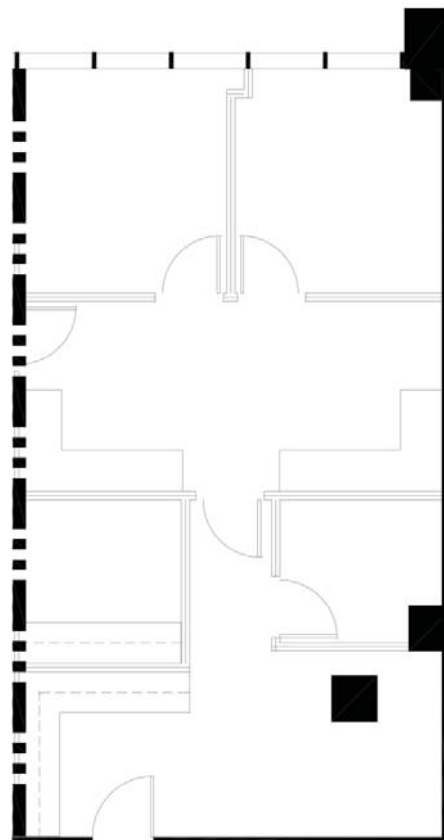


14001 East Illiff Avenue  
Aurora, CO 80014

Suite 110 - 882 RSF

Two offices, lobby exposure, reception area, work station and file room

- Building Size: 168,167 s.f.
- Year Built: 1981 / Renovated in 2008
- Stories: 7
- Typical Floor: 24,950 s.f.
- Average Rent: \$16.00
- Expenses: \$5.73 per s.f.
- Parking: 908 free surface spaces  
5.40 : 1,000 s.f. ratio
- Amenities: Conference facility  
On-site deli  
On-site management  
Security system - key card  
Prominent building signage  
Immediate access to I-225  
Panoramic views
- Location: 20 minutes to DIA  
Adjacent to RTD Light Rail  
Station coming in 2014!



For additional information:

Lindsay Gilbert  
+1 303 260 6529  
lindsay.gilbert@am.jll.com

Andy Ross  
+1 303 260 6504  
andy.ross@am.jll.com

Ray Perry  
+1 303 521 5683  
rperry@sregroup.com



Real value in a changing world