

FOR LEASE

CORNER WAREHOUSE

1300 HART ST
UNIT 1318 C, HONOLULU, HI 96817



THE OPPORTUNITY

- + BASE RENT: \$1.10 SF/MO (ground floor only)
- + CAM/RPT: \$0.68 SF/MO
- + PARKING STALLS: Two (2) Reserved Parking Stalls
- + AVAILABLE: Immediately
- + ZONING: IMX-1
- + SIZE: 1,650 SF

FEATURES

- Great location near town and harbor
- Roll up door
- Large mezzanine - no charge
- Common restroom
- 2.5 miles to Matson docks
- 2.5 miles to Downtown
- 4.5 miles to Waikiki



CONTACT US

NICHOLAS T. ADLER

Sales Assistant
+1 808 541 5149
nicholas.adler@cbre.com
Lic. RS-78419

DANA M. PEITERSON

Executive Vice President
+1 808 541 5189
dana.peiterson@cbre.com
Lic. RB-16825

GEORGE T. LACEY

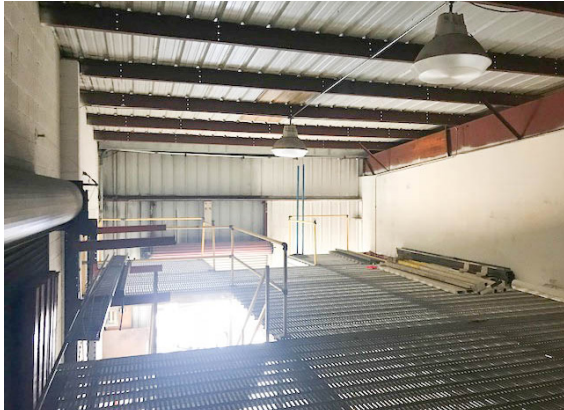
First Vice President
+1 808 541 5108
george.lacey@cbre.com
Lic. RB-15775

www.cbre.us/hawaii

CBRE
LIC. RB-20142

FOR LEASE 1300 HART STREET

UNIT 1318 C
Honolulu, HI 96813



AERIAL VIEW



© 2018 CBRE, Inc. All rights reserved. This information has been obtained from sources believed reliable, but has not been verified for accuracy or completeness. You should conduct a careful, independent investigation of the property and verify all information. Any reliance on this information is solely at your own risk. CBRE and the CBRE logo are service marks of CBRE, Inc. All other marks displayed on this document are the property of their respective owners. Photos herein are the property of their respective owners. Use of these images without the express written consent of the owner is prohibited.

GL:JS_HartSt1300_07.19.18

www.cbre.us/hawaii

CBRE
LIC. RB-20142