



**COLDWELL
BANKER
COMMERCIAL**
DANFORTH



5400 SE NEWPORT WAY

Issaquah, WA 98027

FOR SALE

CBCWORLDWIDE.COM



Vladimir Olyanich

425.615.0577

volyanich@cbcworldwide.com

Ben Snyder

206.371.2674

snyderestates@gmail.com

Derek Doke, CCIM

206.258.5132

derek.doke@brightonjones.com

©2019 Coldwell Banker Real Estate LLC, dba Coldwell Banker Commercial Danforth. All rights reserved. Coldwell Banker Commercial® and the Coldwell Banker Commercial logo are registered service marks owned by Coldwell Banker Real Estate LLC. Coldwell Banker Real Estate LLC, dba Coldwell Banker Commercial Affiliates fully supports the principles of the Fair Housing Act and the Equal Opportunity Act. Each office is independently owned and operated. The information provided is deemed reliable, but it is not guaranteed to be accurate or complete, and it should not be relied upon as such. This information should be independently verified before any person enters into a transaction based upon it.

**COLDWELL BANKER COMMERCIAL
DANFORTH**

33313 1st Way S, Federal Way, WA 98003
253.874.3200



5400 SE NEWPORT WAY

Issaquah, WA 98027

SALE



OFFERING SUMMARY

Sale Price: Subject To Offer

Parcel Number: 202406-9065

Address: 5400 SE Newport Way
Issaquah, WA 98027

Lot Size: 17,424 SF (0.4 Acres)

Zoning: VR - Village Residential

PROPERTY OVERVIEW

Village Residential (VR) Zoning allows for a number of permitted land uses including but not limited to: multifamily, single family, adult family home, school, day care center, office (general; professional; financial; medical; or dental), general retail service (up to 3,000 sq. ft. gross floor area) and many more.

Preliminary yield study available for 44 condos or office. Possibility of Lake Sammamish views for new development. Rare Issaquah lot has visibility from I-90 and offers proximity to variety of retail, shopping, medical offices and etc.

DEMOGRAPHICS

	1 MILE	3 MILES	5 MILES
Total Households	2,092	16,363	48,148
Total Population	5,118	40,955	128,495
Average HH Income	\$121,753	\$130,287	\$127,784

FOR MORE DETAILS CONTACT:

Vladimir Olyanich
425.615.0577
volyanich@cbcworldwide.com

Ben Snyder
206.371.2674
snyderestates@gmail.com

Derek Doke, CCIM
206.258.5132
derek.doke@brightonjones.com



**COLDWELL
BANKER
COMMERCIAL**
DANFORTH



**Brighton
Jones**
Real Estate Advisors



5400 SE NEWPORT WAY

Issaquah, WA 98027

SALE



FOR MORE DETAILS CONTACT:

Vladimir Olyanich

425.615.0577
volyanich@cbcworldwide.com

Ben Snyder

206.371.2674
snyderestates@gmail.com

Derek Doke, CCIM

206.258.5132
derek.doke@brightonjones.com



**COLDWELL
BANKER
COMMERCIAL**
DANFORTH



**Brighton
Jones®**

Real Estate Advisors



5400 SE NEWPORT WAY

Issaquah, WA 98027

SALE



FOR MORE DETAILS CONTACT:

Vladimir Olyanich
425.615.0577
volyanich@cbcworldwide.com

Ben Snyder
206.371.2674
snyderestates@gmail.com

Derek Doke, CCIM
206.258.5132
derek.doke@brightonjones.com



**COLDWELL
BANKER
COMMERCIAL**
DANFORTH



**Brighton
Jones**
Real Estate Advisors

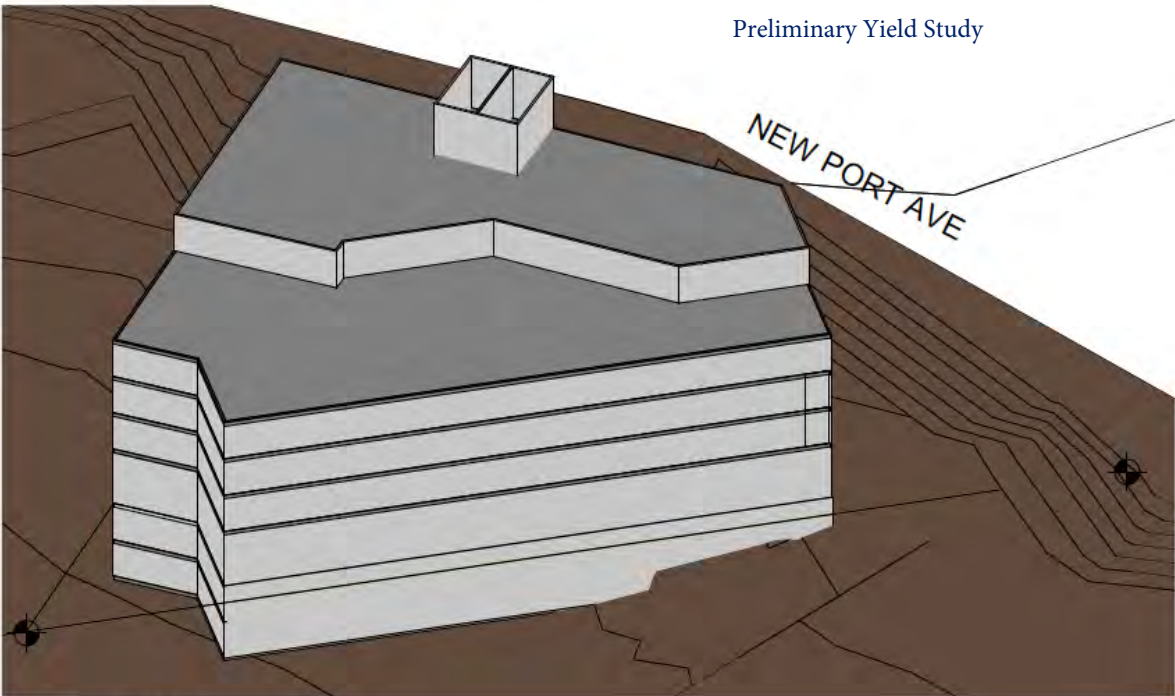


SALE

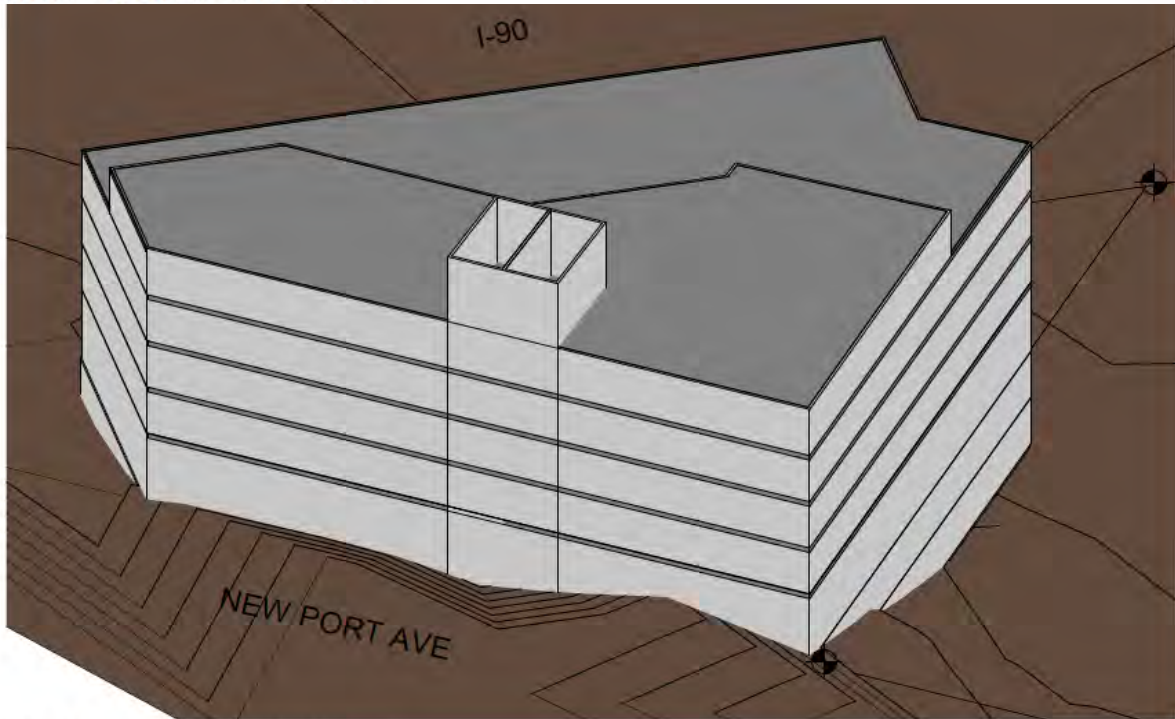
5400 SE NEWPORT WAY

Issaquah, WA 98027

Preliminary Yield Study



VIEW FROM SOUTH EAST



VIEW FROM SOUTHWEST

FOR MORE DETAILS CONTACT:

Vladimir Olyanich
425.615.0577
volyanich@cbcworldwide.com

Ben Snyder
206.371.2674
snyderestates@gmail.com

Derek Doke, CCIM
206.258.5132
derek.doke@brightonjones.com



**COLDWELL
BANKER
COMMERCIAL**
DANFORTH



**Brighton
Jones®**
Real Estate Advisors