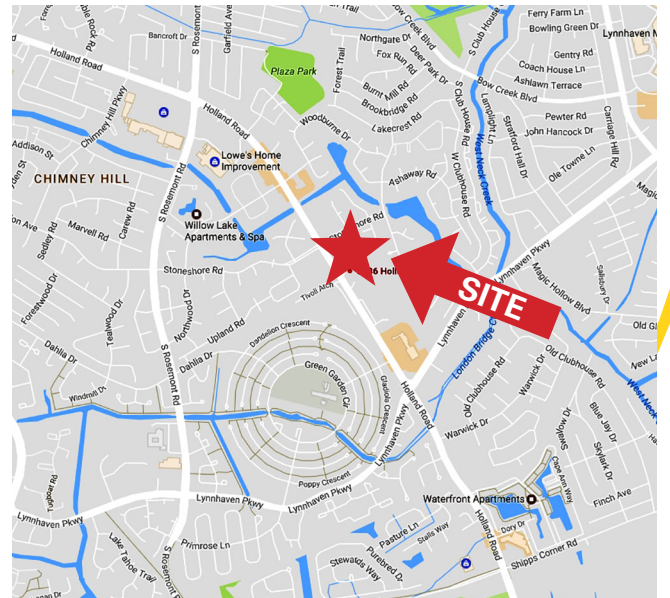


# OFFICE SUITE FOR LEASE

## 3386 Holland Road Virginia Beach, VA



- 900 SF on 1<sup>st</sup> floor (Suite 102)
- Located on Holland Road, between Rosemont Road & Lynnhaven Parkway
- Ample parking
- Pylon Signage Available
- \$13.00 psf, full service, below market rate



### Demographics (2017)

	1 Mile	3 Miles	5 Miles
Population	25,926	115,857	250,586
Households	9,026	41,774	91,137
Ave. HH Inc.	\$67,174	\$75,400	\$81,621

CONTACT:

**KIMBERLY WORLEY**

**(757) 640-8227**

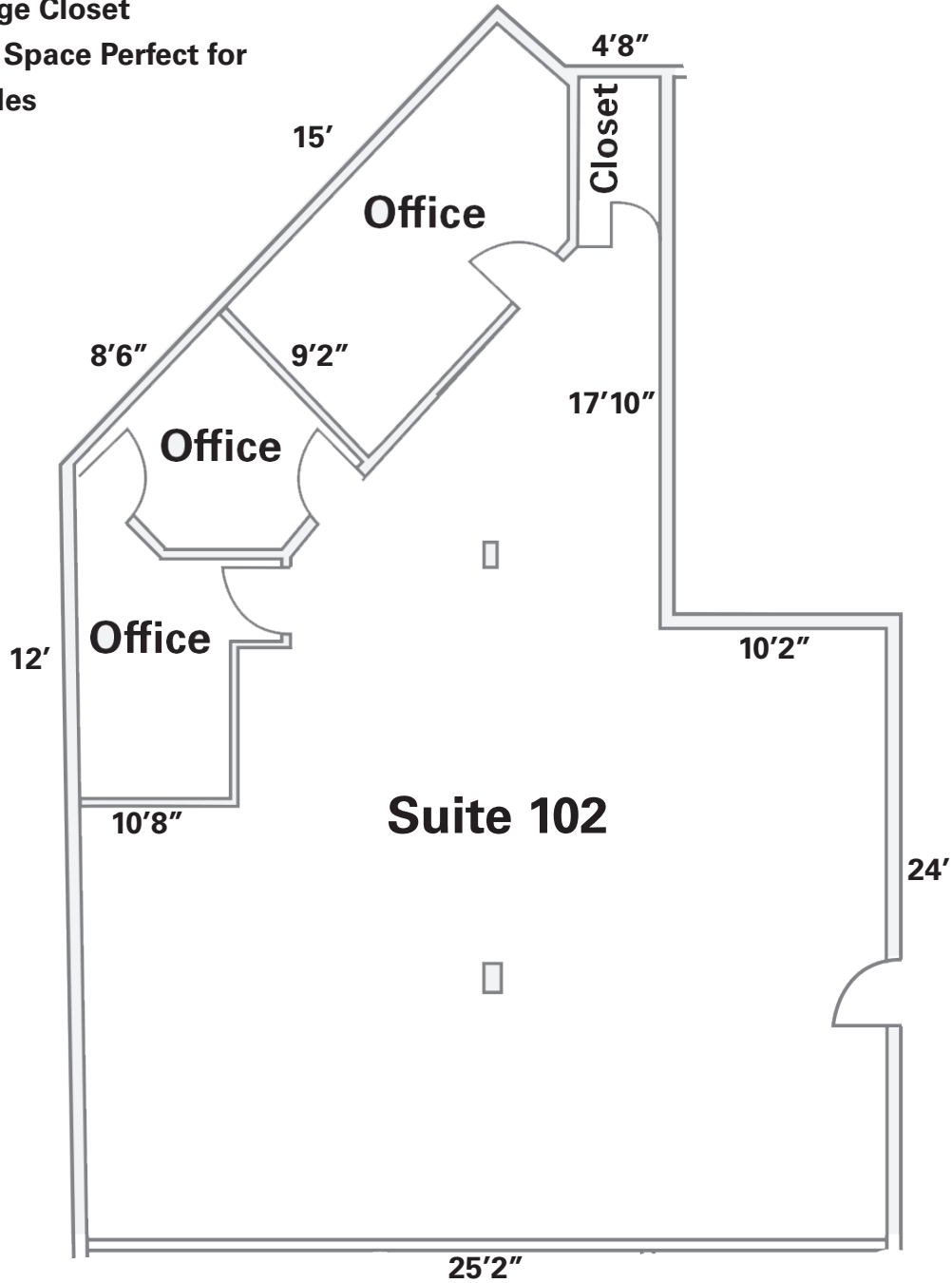
[kimberlyworley@harveylindsay.com](mailto:kimberlyworley@harveylindsay.com)

**HARVEY LINDSAY**  
COMMERCIAL REAL ESTATE

*A Tradition of Forward Thinking*

**3386 HOLLAND ROAD, SUITE 102 - VIRGINIA BEACH, VA**

- Three Private Offices
- Storage Closet
- Open Space Perfect for Cubicles



\*Measurements are approximate

CONTACT: \_\_\_\_\_

**KIMBERLY WORLEY**

**(757) 640-8227**

[kimberlyworley@harveylindsay.com](mailto:kimberlyworley@harveylindsay.com)

**HARVEY LINDSAY**

COMMERCIAL REAL ESTATE

*A Tradition of Forward Thinking*

The information contained herein has been obtained from sources believed to be reliable but is not warranted.  
We cannot be responsible for errors, omissions, withdrawal, or prior lease.