

FOR LEASE/SALE

4110 Wheaton Way
Bremerton, WA 98310

AVAILABLE



BREMERTON STANDALONE

Carrie Walker

First Western Properties—Tacoma Inc. | 253.472.0404
6402 Tacoma Mall Blvd, Tacoma, WA 98409 | fwp-inc.com

4110 WHEATON WAY is located in the heart of Bremerton on the main retail corridor of Wheaton Way. The site has great access to surrounding retailers as well as major employers.

AVAILABLE:

LEASE: 3,648 SF \$16.00 PSF PLUS NNN

SALE: \$719,000.00

- Rare standalone building
- Located conveniently on Wheaton Way
- Located within close proximity to the Puget Sound Naval Shipyard and Naval Hospital
- Pylon signage



Population



Average HH Income

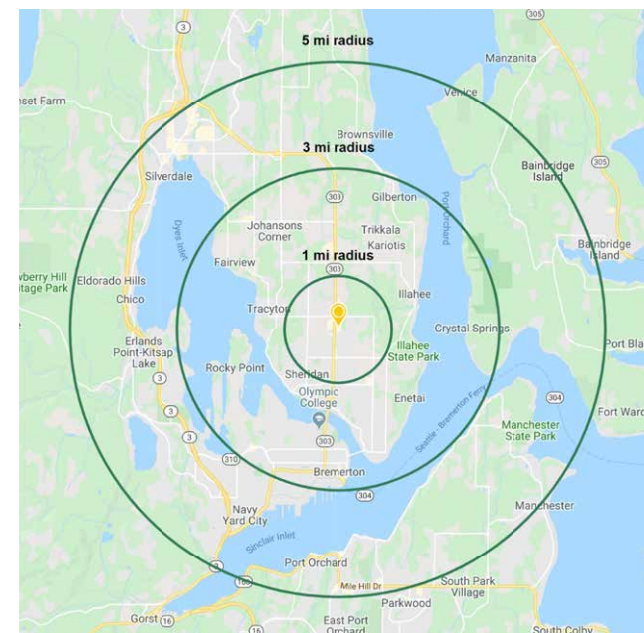
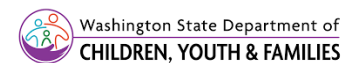


Daytime Population

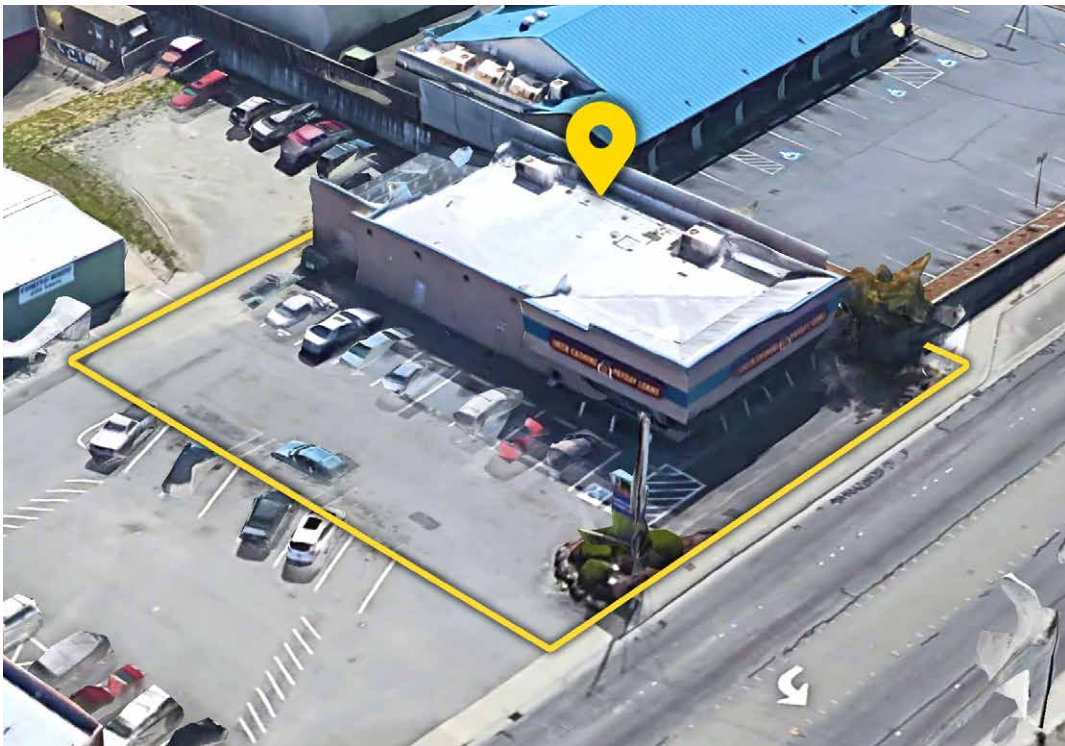
Regis - 2020

	Population	Average HH Income	Daytime Population
Mile 1	11,422	\$81,048	8,192
Mile 3	65,231	\$84,921	38,055
Mile 5	113,846	\$90,969	79,250

TENANTS



SUMMARY



LOCATION DETAILS



Located moments from Puget Sound Naval Shipyard



Located in the Bremerton Retail Core



Located moments from Olympic College



35,000 CPD Wheaton Way

OLYMPIC COLLEGE



Established in 1946, Olympic College has a main campus of 33 acres and offers Associate and Bachelor degree options. Between the main campus in Bremerton, and its two satellite campuses in Poulsbo and Shelton, there are 12,825 students.

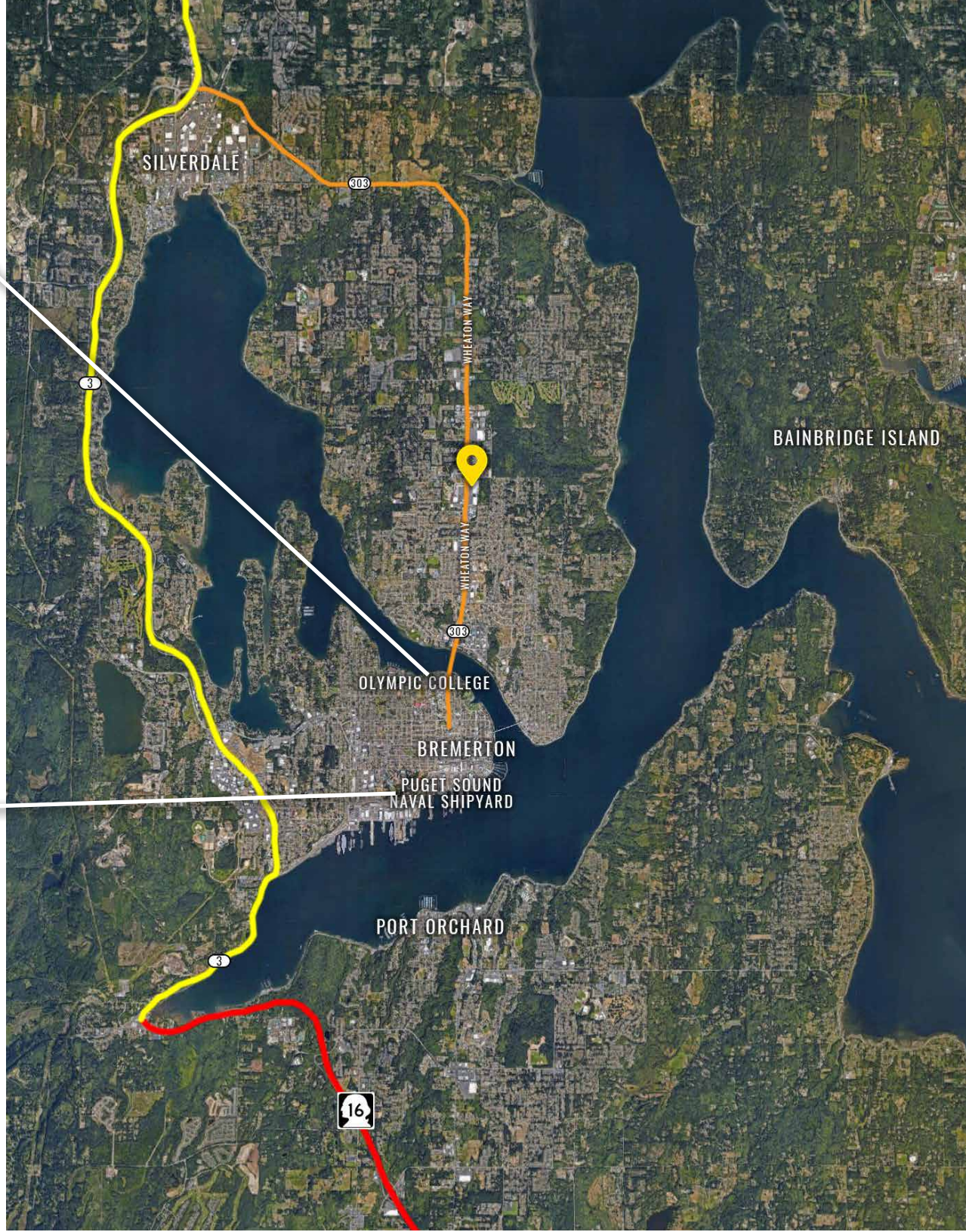
Wikipedia

PUGET SOUND NAVAL SHIPYARD



This 179 acre US Navy Shipyard was established in 1891. It is one of Washington State's largest industrial installations and provides the Navy with maintenance, modernization, and technical & logistics support. As one of the largest employers in Kitsap County, the Puget Sound Naval Shipyard staffs more than 14,000 people.

Wikipedia





BREMERTON, WA is a one-hour ferry ride from downtown Seattle, Bremerton is truly a beautiful city. Guests enjoy the Kitsap Conference Center, two hotels, fine dining, coffee shops, cafes and the Port of Bremerton Marina in the downtown Harborside area. Have a beautiful stroll through the Arts District, Bremerton Naval Museum, Boardwalk, Harborside Fountain Park and PSNS Memorial Plaza.

TACOMA | KIRKLAND | PORTLAND | SEATTLE

RELATIONSHIP FOCUSED. RESULTS DRIVEN.

CARRIE WALKER

253.284.3644
carrie@firstwesternproperties.com



First Western Properties—Tacoma Inc. | 253.472.0404
6402 Tacoma Mall Blvd, Tacoma, WA 98409 | fwp-inc.com

© First Western Properties, Inc. DISCLAIMER: The above information has been secured from sources believed to be reliable, however, no representations are made to its accuracy. Prospective tenants or buyers should consult their professional advisors and conduct their own independent investigation. Properties are subject to change in price and/or availability without notice.