

PROPERTY DESCRIPTION REPORT

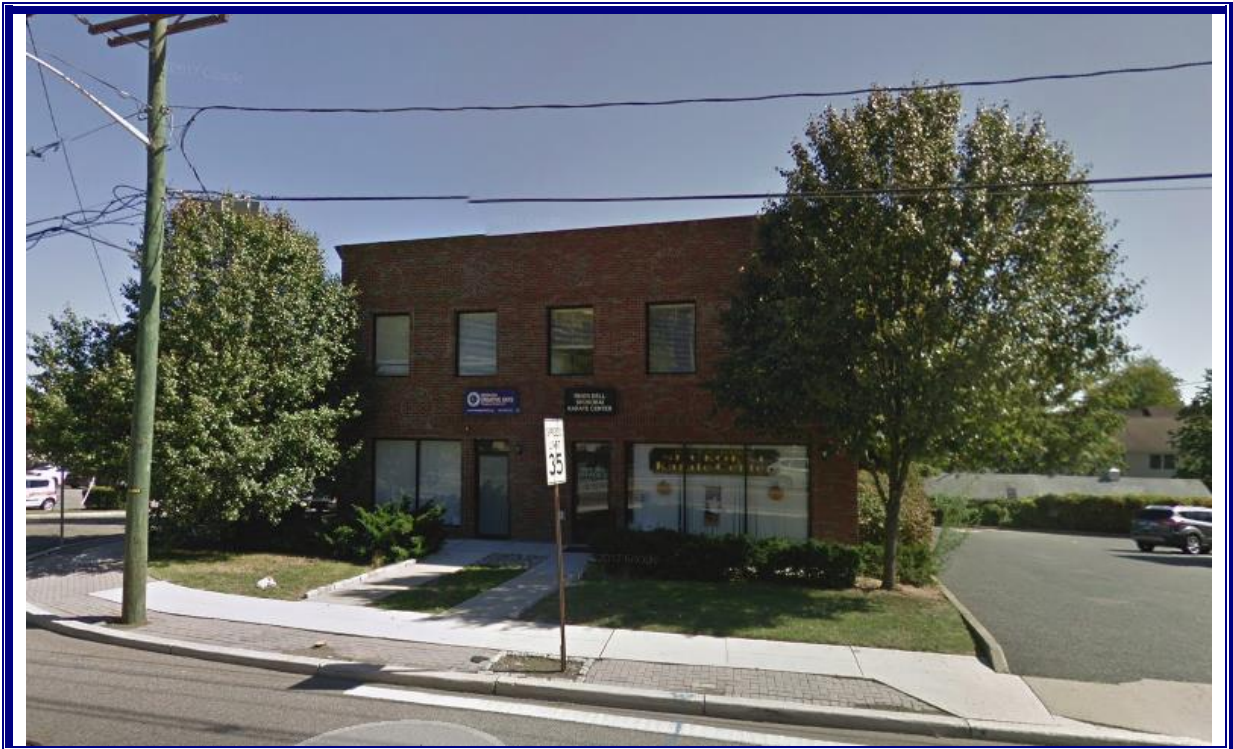
SMILES DENTISTRY
954 KINDERKAMACK RD
RIVER EDGE, NJ

PHYSICAL DESCRIPTION

SF Available: 2,100
Total SF: 4,400
Office Space: 2,100
Lot Size: 0.22
Heat: GAS
AC Warehouse / Office: False / True
Parking Spaces: 15
Zoning: OFF;RTL

FINANCIAL INFORMATION

For Sale: N
Sale Price:
Lease Price: 17.00/ SF
Taxes/CAM/Other: \$21,812 /11



RETAIL EXPOSURE AND GENEROUS PARKING! 2ND FLOOR WIDE OPEN WITH 2 OFFICE AND RECEPTION 16 CAR SHARED PARKING BEHIND BLDG. THIS SPACE CAN BE DIVIDED INTO 1,150 SF OR 950 SF.

NIA National Realty, Inc.

Call: Nina Bianco
Office: (201) 336-1211
Fax: (201) 845-3012
Email: nbianco@nianationalrealty.com

Please visit our web site at www.nianationalrealty.com
Subject to errors, omissions, changes, prior sale or withdrawal, all without notice.

