



## CROWN OFFICE VILLAGE

1395-1475 E. 12 Mile – Madison Heights, Michigan



### OFFICE / MEDICAL SPACE FOR SALE OR LEASE

- 841 – 5,737 Square Feet Available
- Beautiful Park Setting
- Professionally Managed
- Conveniently Located Minutes From I-75 and I-696
- Abundant Parking
- Individual Suite Entrances

FOR SALE OR LEASE :  
UP TO 5,737 SQUARE FEET

CROWN OFFICE VILLAGE  
MADISON HEIGHTS, MICHIGAN

## CROWN OFFICE VILLAGE

### FOR SALE OR LEASE:

Suite 1467: 5,737 SF

### FOR LEASE:

Suite 1461: 2,830 SF

Suite 1473: 1,941 SF

Suite 1475: 841 SF



For more information, please contact:

SCOTT MARCUS

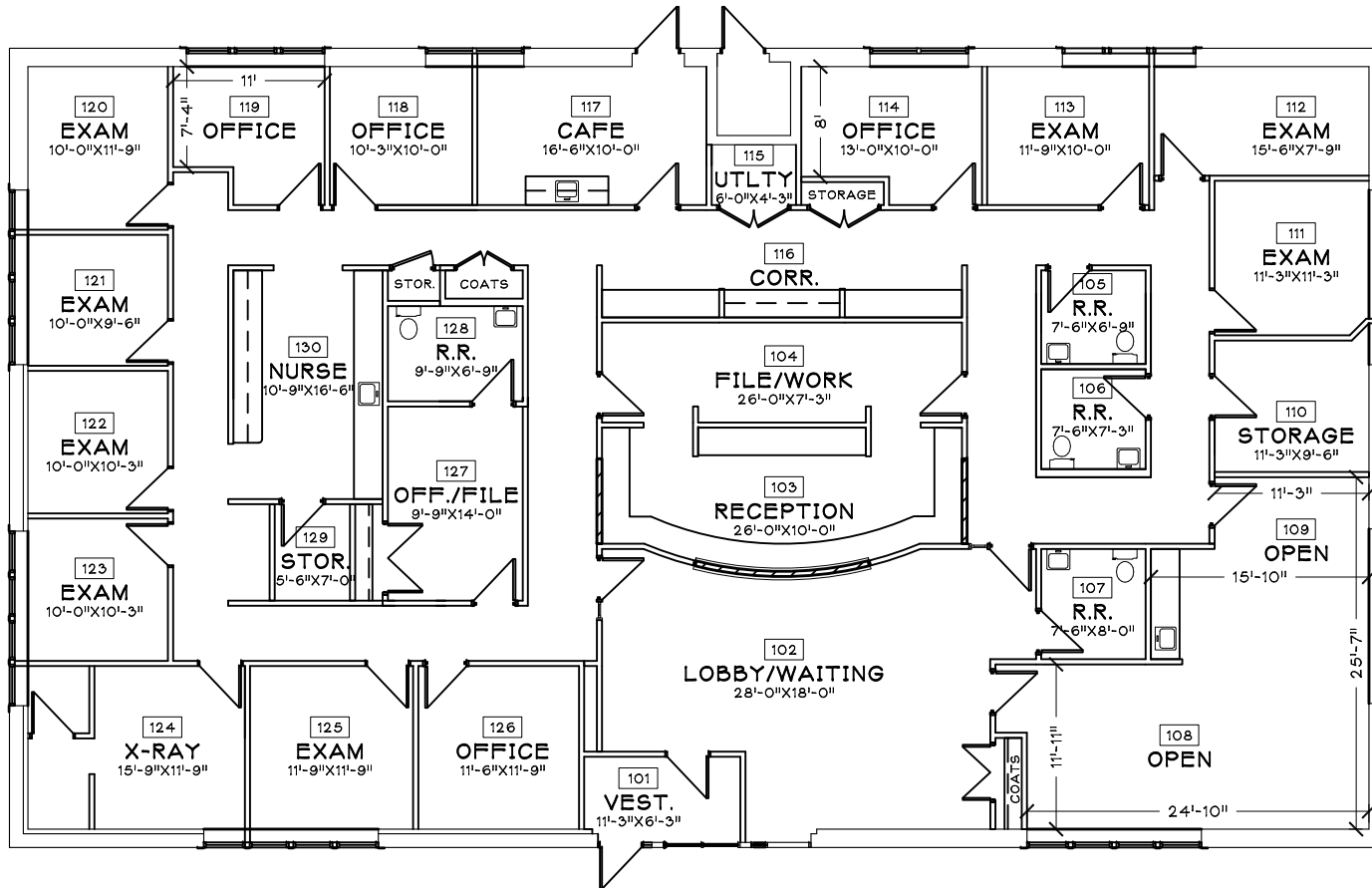
Office: 248.645.2600

Cell: 248.730.2227

Marcus@RSMDevelopment.com

**RSM** DEVELOPMENT  
& MANAGEMENT

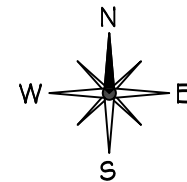




EXISTING CONDITIONS  
**SUITE 1467**

CROWN OFFICE VILLAGE - BUILDING I  
 1467 E 12 MILE ROAD  
 MADISON HEIGHTS, MI

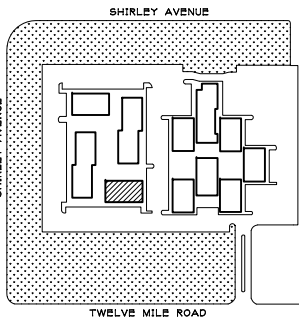
5,737 RSF  
 07.19.18



NOT TO SCALE

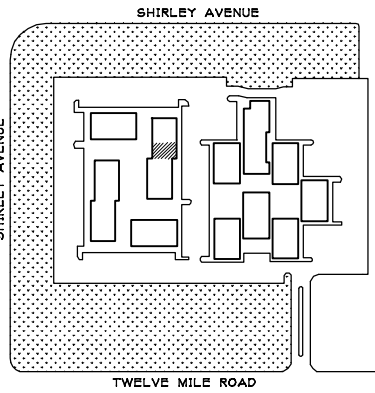
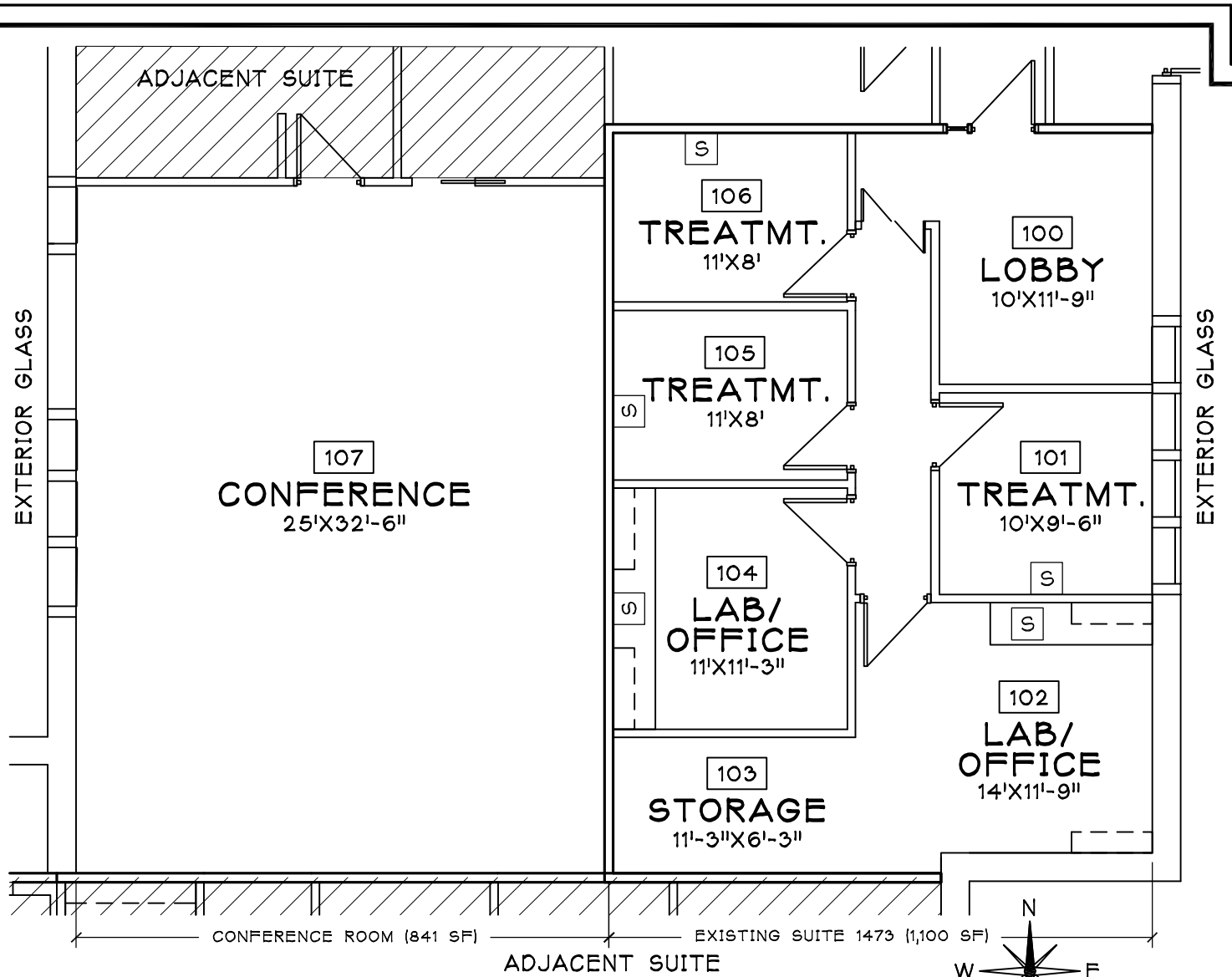
**DMIS & DMIS**  
 INTERIOR DESIGN LLC

30500 NORTHWESTERN HWY., SUITE 311  
 FARMINGTON HILLS, MI 48334  
 PHONE (248) 855-7040 FAX (248) 855-7744  
 WWW.DAVISINTERIORDSIGN.COM



KEY PLAN

**RSM** DEVELOPMENT & MANAGEMENT



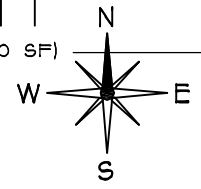
**KEY PLAN**

CONFERENCE ROOM (841 SF)      EXISTING SUITE 1473 (1,100 SF)

EXISTING CONDITIONS  
**SUITE 1473**

CROWN OFFICE VILLAGE  
 1473 E. 12 MILE ROAD  
 MADISON HEIGHTS, MI 48071

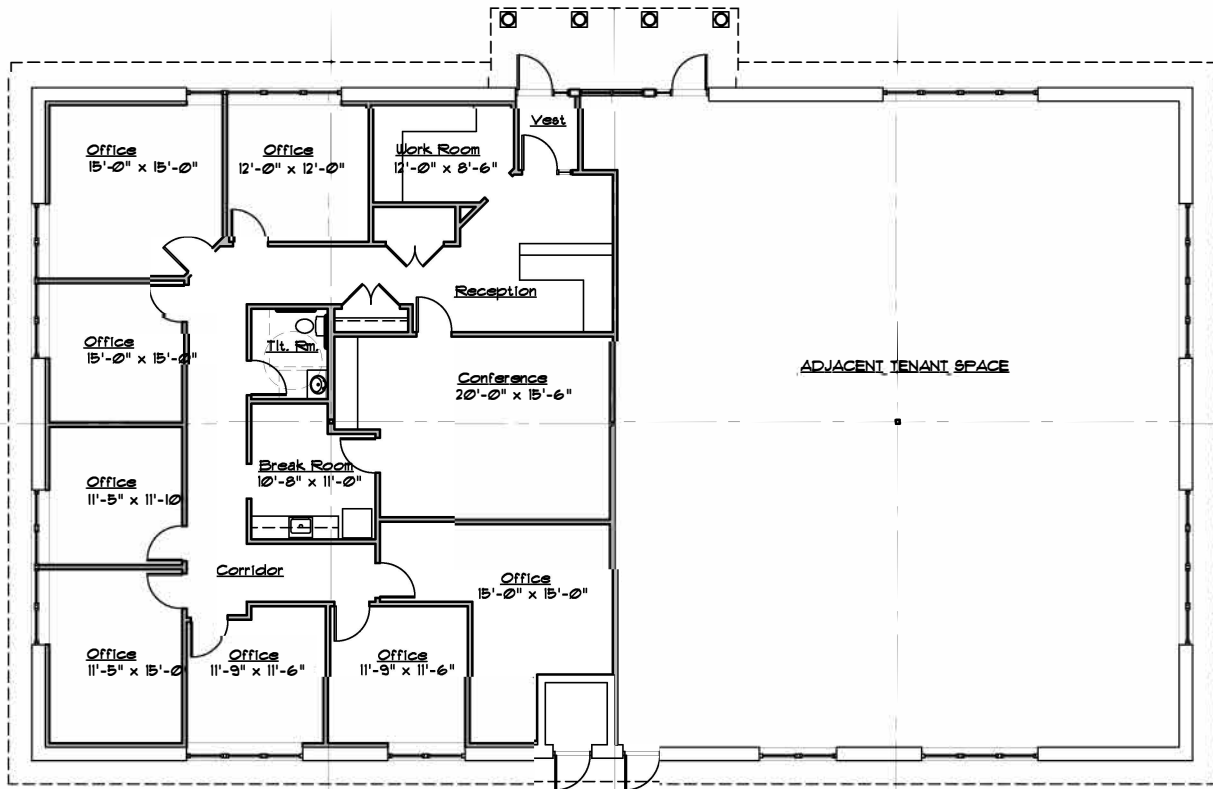
1,941 SF (TOTAL)  
 08-12-13



NOT TO SCALE

**DAVIS & DAVIS**  
 INTERIOR DESIGN CO.  
 30500 NORTHWESTERN HWY. SUITE 311  
 FARMINGTON HILLS, MI 48334  
 PHONE (248) 855-7040 FAX (248) 855-7744  
 WWW.DAVISINTERIORDESIGN.COM

**RSM** DEVELOPMENT  
 & MANAGEMENT  
 (248) 645-2600 PHONE  
 (248) 644-2801 FAX  
 P.O. BOX 772  
 BLOOMFIELD HILLS, MI

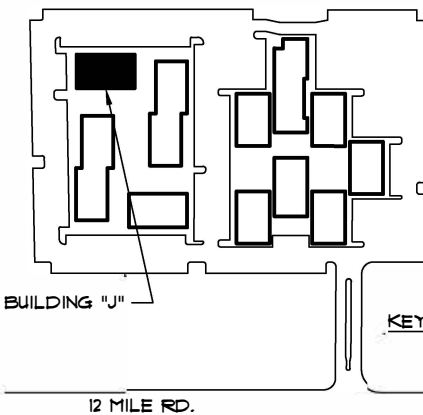


EXISTING SUITE FLOOR PLAN  
SCALE: 1/16" = 1'-0"

2,830 S.F.  
11-8-18



CROWN OFFICE VILLAGE  
BUILDING "K"  
1461 12 MILE ROAD  
MADISON HEIGHTS, MI



**RSM DEVELOPMENT & MANAGEMENT**  
(248) 645-2600  
FAX: (248) 644-2801  
P.O. BOX 2079  
BLOOMFIELD HILLS, MI

KEY PLAN



**Dorchen/Martin Associates, Inc.**  
Architects/Planners

29895 Greenfield Rd., Suite 107  
Southfield, Michigan 48076  
(248) 557-1062  
Fax: (248) 557-1231