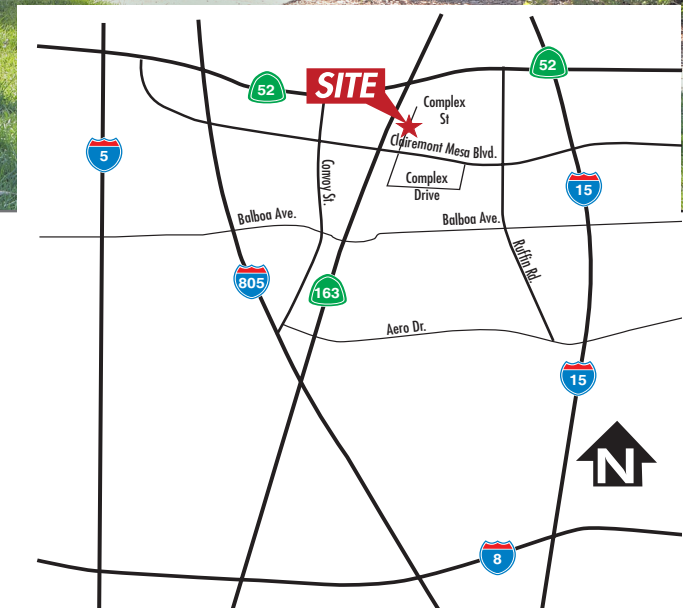


# CABRILLO BUSINESS PARK MULTI-TENANT INDUSTRIAL / FLEX

5450 - 5490 COMPLEX STREET | SAN DIEGO, CA 92123

AVAILABLE FOR LEASE:  
742 - 1,558 SF



KEARNY MESA LOCATION

- 742 - 1,558 SF Suites Available for Lease
- High image office/industrial suites
- Flexible suite options
- Sprinklers
- Grade level loading
- 14' warehouse clearance
- 2.46/1,000 parking ratio
- A 109,661 SF multi-tenant flex/industrial park
- Immediate access to Clairemont Mesa Blvd., Hwy 52 & 163 and I-805 & I-15

# CABRILLO BUSINESS PARK MULTI-TENANT INDUSTRIAL / FLEX

5450 - 5490 COMPLEX STREET | SAN DIEGO, CA 92123

AVAILABLE FOR LEASE:  
742 - 1,558 SF



# CABRILLO BUSINESS PARK MULTI-TENANT INDUSTRIAL / FLEX

5450 - 5490 COMPLEX STREET | SAN DIEGO, CA 92123



AVAILABLE FOR LEASE:  
**742 - 1,558 SF**

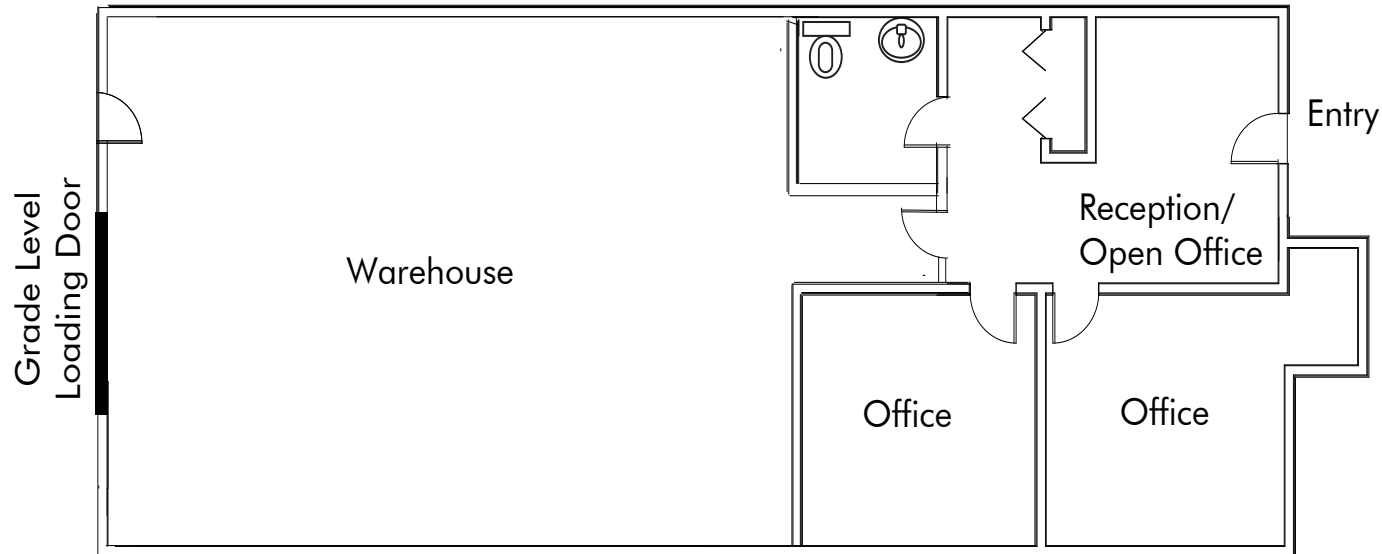
ADDRESS	SF	RATE/PRICE	BUILD OUT	VIRTUAL TOUR
5450 Complex Street, Suite 308	1,558 SF	\$1.60/SF MG	Approximately 50% office and 50% warehouse, (2) private offices, (1) grade level loading door, and (1) restroom.	<a href="#">Click Here</a>
5482 Complex Street, Suite 114	742 SF	\$1.70/SF MG	Approximately 100% office, (2) private offices, open office area, reception, and (1) restroom.	N/A

Modified Gross rates do not include a CAM Fee = Approximately \$0.21/PSF/Month

# CABRILLO BUSINESS PARK MULTI-TENANT INDUSTRIAL / FLEX

5450 - 5490 COMPLEX STREET | SAN DIEGO, CA 92123

5450 COMPLEX STREET  
SUITE 308  
±1,558 SF



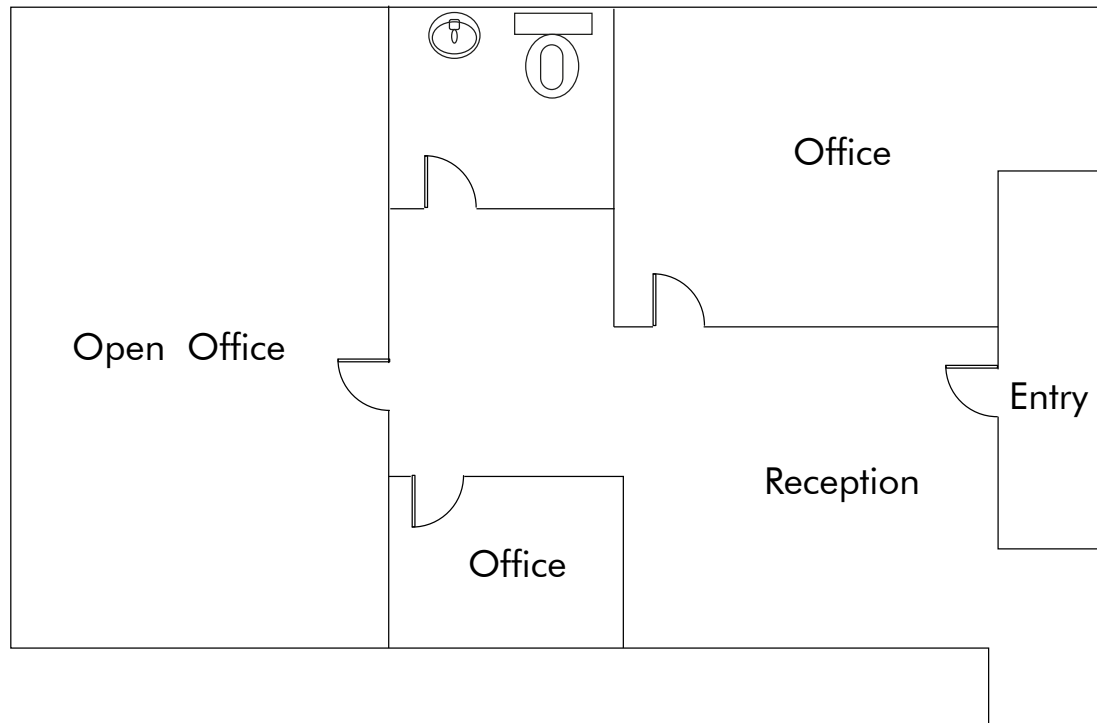
© 2020 CBRE, Inc. The information contained in this document has been obtained from sources believed reliable. While CBRE, Inc. does not doubt its accuracy, CBRE, Inc. has not verified it and makes no guarantee, warranty or representation about it. It is your responsibility to independently confirm its accuracy and completeness. Any projections, opinions, assumptions or estimates used are for example only and do not represent the current or future performance of the property. The value of this transaction to you depends on tax and other factors which should be evaluated by your tax, financial and legal advisors. You and your advisors should conduct a careful, independent investigation of the property to determine to your satisfaction the suitability of the property for your needs. Photos herein are the property of their respective owners and use of these images without the express written consent of the owner is prohibited.



# CABRILLO BUSINESS PARK MULTI-TENANT INDUSTRIAL / FLEX

5450 - 5490 COMPLEX STREET | SAN DIEGO, CA 92123

5482 COMPLEX STREET  
SUITE 114  
±742 SF



**FOR MORE  
INFORMATION  
PLEASE  
CONTACT**

**Ryan Sparks, SIOR**

Lic. 01784736  
+1 858 546 2606  
ryan.sparks@cbre.com

**Sean Williams, SIOR**

Lic. 1475415  
+1 858 546 4625  
sean.williams@cbre.com

**Kyle Wright**

Lic. 02083245  
+1 858 546 4621  
kyle.wright2@cbre.com