



1334 N Whitman Lane

Liberty Lake, Washington 99019

## Property Features

- Class “A” Medical/Office Building
- Building Size: ± 26,000SF
- Parking Ratio: 3.7/1,000
- ADA Accessible with Elevator
- Easy Access and Freeway Visibility
- Signage Available in Lobby and on Building
- 4 Spaces Available:
  - Space 1: ± 2,722 SF
  - Space 2: ± 2,900 SF
  - Space 3: ± 1,267 SF
  - Space 4: ± 3,513 SF



Available For Lease  
Liberty Lake Health & Wellness Center

**Lease Rate:**  
**\$20.00/SF/NNN**

Black Commercial, Inc.  
801 W. Riverside Ave., Suite 300  
Spokane, WA 99201  
+1 509 623 1000  
[naiblack.com](http://naiblack.com)

**Bryan Walker**  
509 951 3669  
[bwalker@naiblack.com](mailto:bwalker@naiblack.com)



# NAI Black

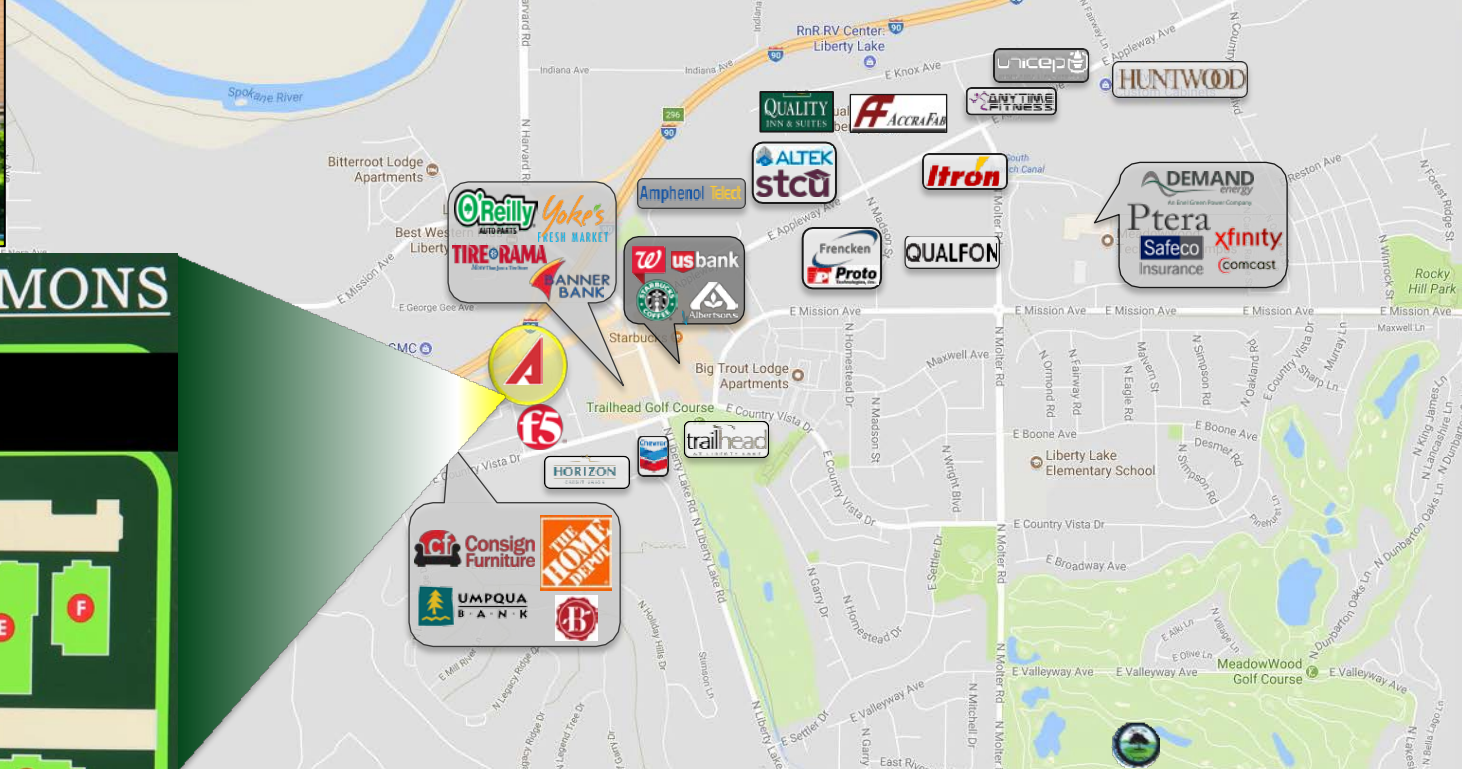
## 1334 N Whitman Lane

Liberty Lake, Washington 99019

Available For Lease  
Liberty Lake Health & Wellness Center



### LIBERTY LAKE COMMONS



Black Commercial, Inc.  
801 W. Riverside Ave., Suite 300  
Spokane, WA 99201  
+1 509 623 1000  
naiblack.com

**Bryan Walker**  
509 951 3669  
bwalker@naiblack.com

NO WARRANTY OR REPRESENTATION, EXPRESS OR IMPLIED, IS MADE AS TO THE ACCURACY OF THE INFORMATION CONTAINED HEREIN, AND THE SAME IS SUBMITTED SUBJECT TO ERRORS, OMISSIONS, CHANGE OF PRICE, RENTAL OR OTHER CONDITIONS, PRIOR SALE, LEASE OR FINANCING, OR WITHDRAWAL WITHOUT NOTICE, AND OF ANY SPECIAL LISTING CONDITIONS IMPOSED BY OUR PRINCIPALS NO WARRANTIES OR REPRESENTATIONS ARE MADE AS TO THE CONDITION OF THE PROPERTY OR ANY HAZARDS CONTAINED THEREIN OR ANY TO BE IMPLIED.

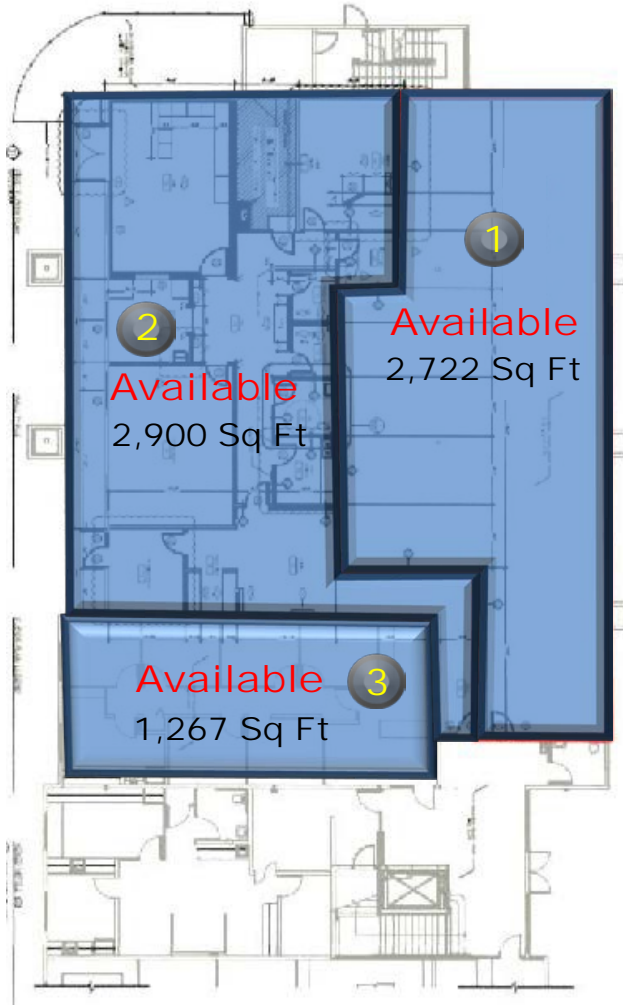


1334 N Whitman Lane

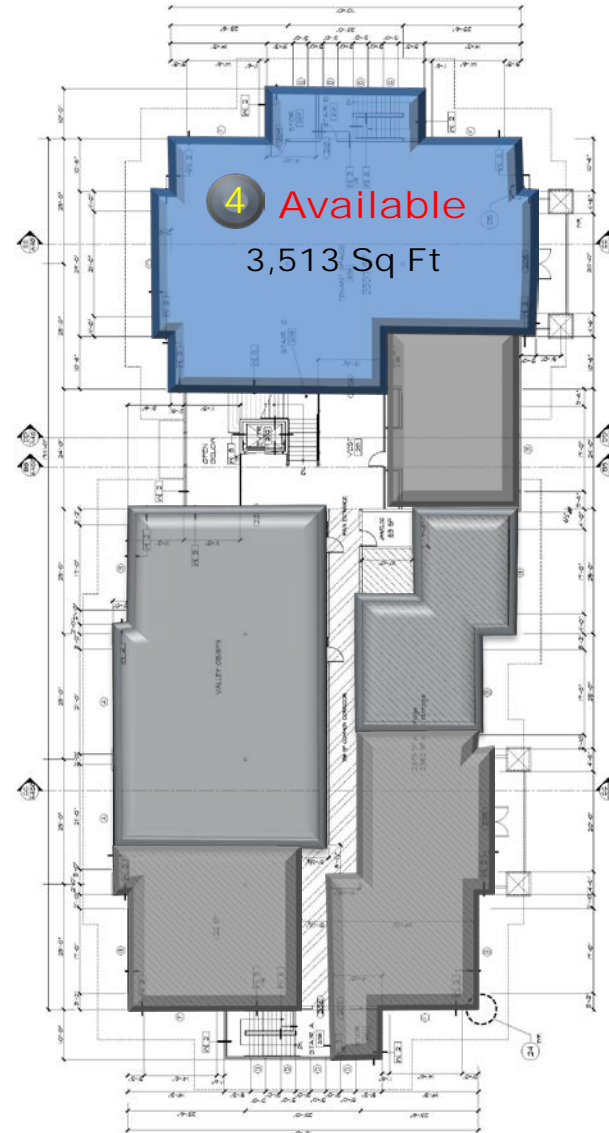
Liberty Lake, Washington 99019

Available For Lease  
Liberty Lake Health & Wellness Center

### 1<sup>st</sup> Floor



### 2<sup>nd</sup> Floor



Black Commercial, Inc.  
801 W. Riverside Ave., Suite 300  
Spokane, WA 99201  
+1 509 623 1000  
[naiblack.com](http://naiblack.com)

**Bryan Walker**  
509 951 3669  
[bwalker@naiblack.com](mailto:bwalker@naiblack.com)

NO WARRANTY OR REPRESENTATION, EXPRESS OR IMPLIED, IS MADE AS TO THE ACCURACY OF THE INFORMATION CONTAINED HEREIN, AND THE SAME IS SUBMITTED SUBJECT TO ERRORS, OMISSIONS, CHANGE OF PRICE, RENTAL OR OTHER CONDITIONS, PRIOR SALE, LEASE OR FINANCING, OR WITHDRAWAL WITHOUT NOTICE, AND OF ANY SPECIAL LISTING CONDITIONS IMPOSED BY OUR PRINCIPALS NO WARRANTIES OR REPRESENTATIONS ARE MADE AS TO THE CONDITION OF THE PROPERTY OR ANY HAZARDS CONTAINED THEREIN OR ANY TO BE IMPLIED.



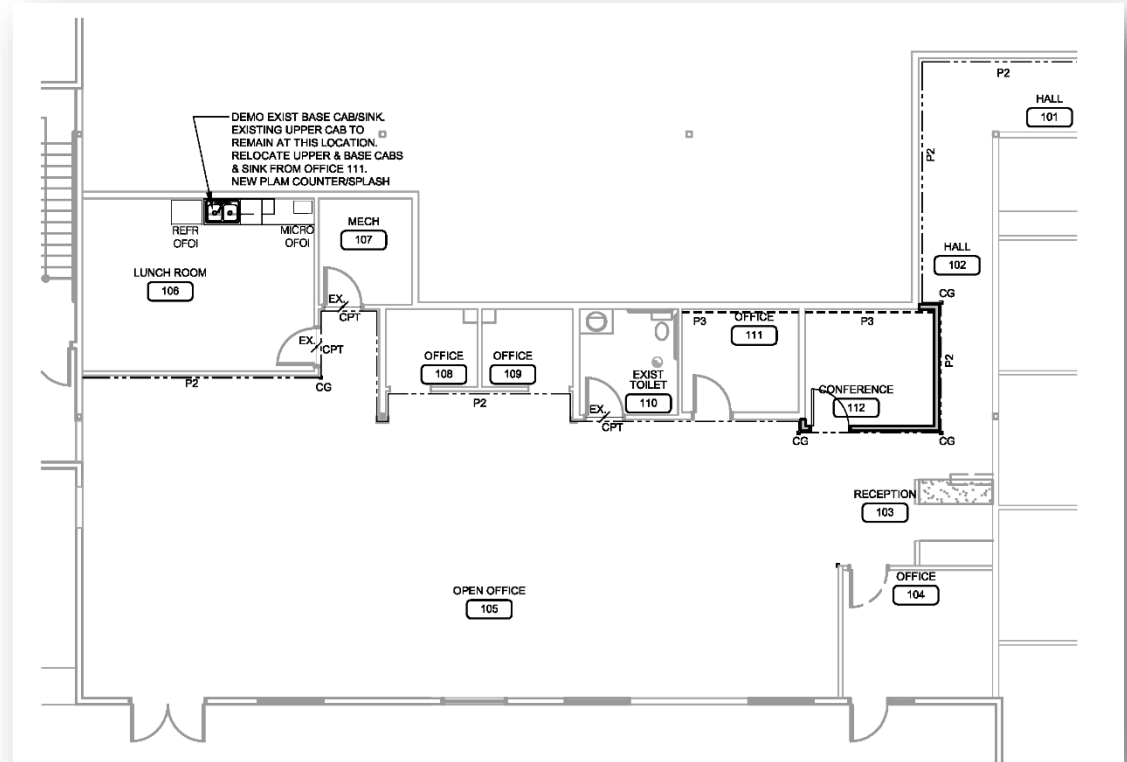
1334 N Whitman Lane

Liberty Lake, Washington 99019

Available For Lease  
Liberty Lake Health & Wellness Center



Space 1 – 2,722 Sq Ft



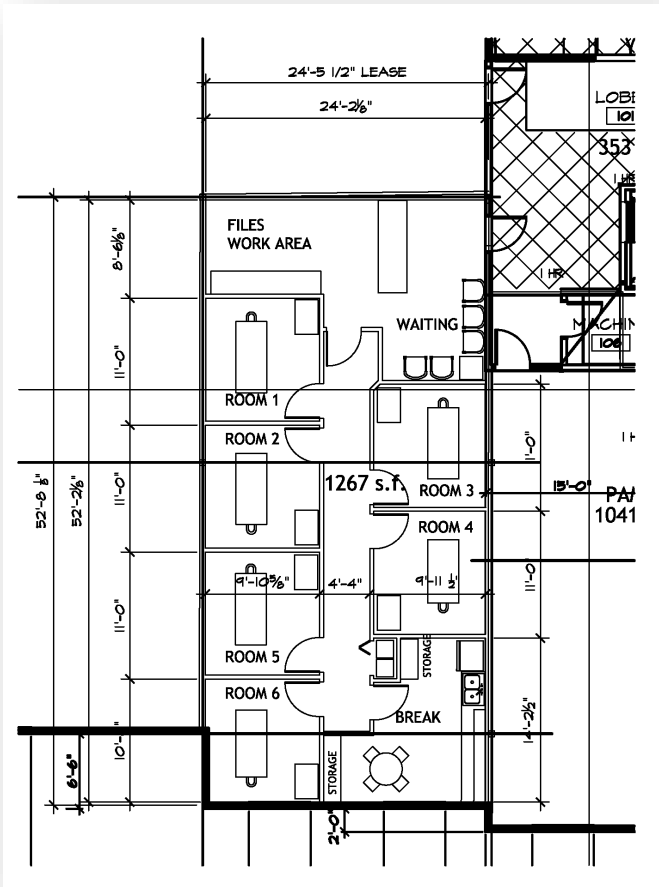
Space 2 – 2,900 Sq Ft

Black Commercial, Inc.  
801 W. Riverside Ave., Suite 300  
Spokane, WA 99201  
+1 509 623 1000  
naiblack.com

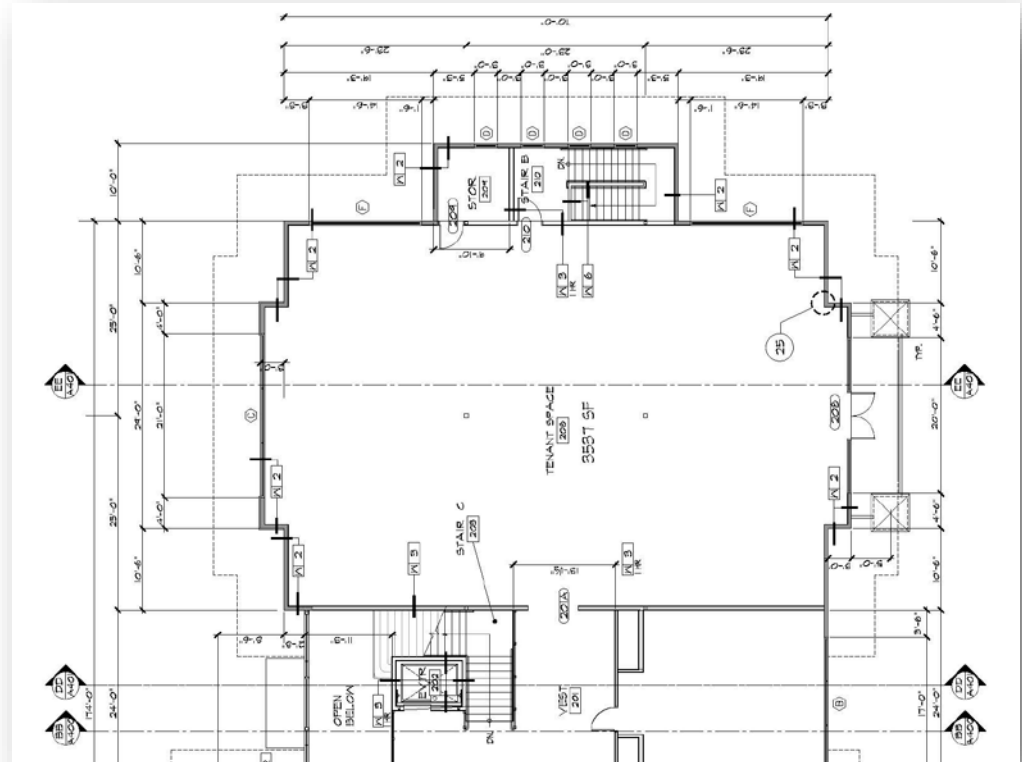
**Bryan Walker**  
509 951 3669  
bwalker@naiblack.com

NO WARRANTY OR REPRESENTATION, EXPRESS OR IMPLIED, IS MADE AS TO THE ACCURACY OF THE INFORMATION CONTAINED HEREIN, AND THE SAME IS SUBMITTED SUBJECT TO ERRORS, OMISSIONS, CHANGE OF PRICE, RENTAL OR OTHER CONDITIONS, PRIOR SALE, LEASE OR FINANCING, OR WITHDRAWAL WITHOUT NOTICE, AND OF ANY SPECIAL LISTING CONDITIONS IMPOSED BY OUR PRINCIPALS NO WARRANTIES OR REPRESENTATIONS ARE MADE AS TO THE CONDITION OF THE PROPERTY OR ANY HAZARDS CONTAINED THEREIN OR ANY TO BE IMPLIED.





Space 3 – 1,267 Sq Ft



Space 4 – 3,513 Sq Ft

Black Commercial, Inc.  
801 W. Riverside Ave., Suite 300  
Spokane, WA 99201  
+1 509 623 1000  
naiblack.com

**Bryan Walker**  
509 951 3669  
bwalker@naiblack.com