

MEDICAL OFFICE FOR LEASE

Schulz
PROPERTIES, LTD.

FAMILY MEDICAL CENTER ROMEDEVILLE, ILLINOIS



Kristian Lee

630.737.1200 | 815.954.1749 Cell

klee@schulzproperties.com

www.schulzproperties.com

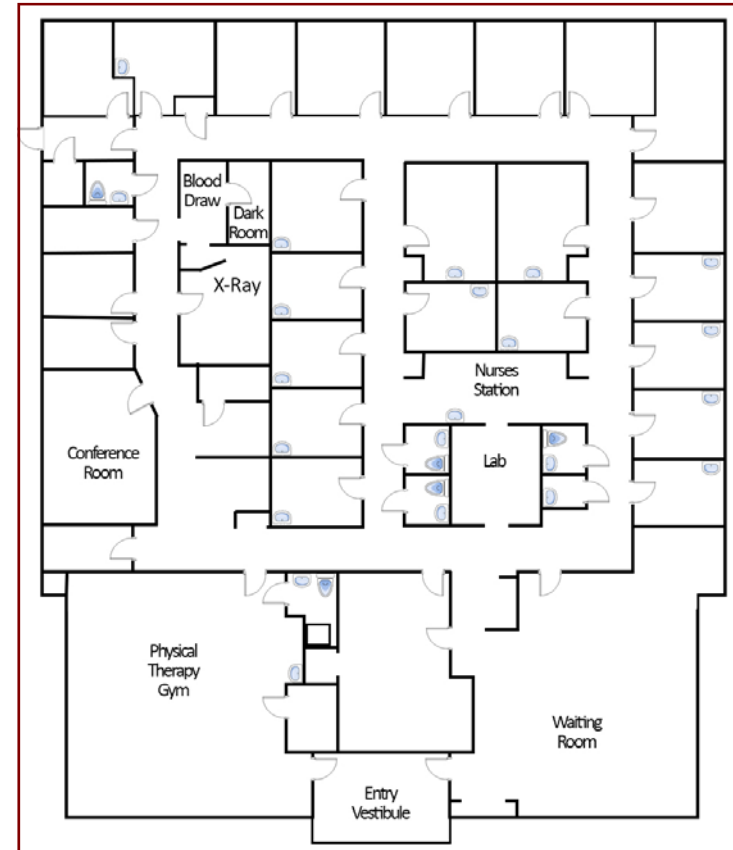
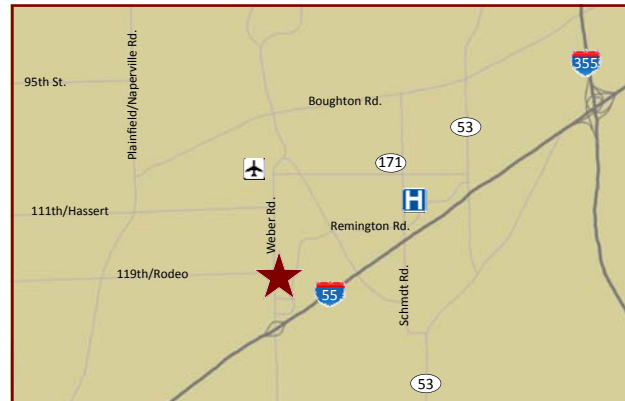


9,642 RSF Medical Office

The *Family Medical Center* is located at the intersection of Weber Road and Windham Parkway in Romeoville. This fully built out 9,642 RSF medical building is in ready to occupy condition with 14 exam rooms, nurses station, lab, physical therapy gym, x-ray room and large waiting room providing comfort to your patients.

Surrounded by restaurants, hotels and close proximity to *Adventist Bolingbrook Hospital*, this is a great location for your medical practice.

Building can also be converted to a corporate office building for an ideal headquarters.



- Only 0.48 Mi. from I-55
- 3 Mi.— Adventist Bolingbrook Hospital
- 6 Mi.— Edwards Hospital
- Located off Weber Road with lighted interchange

Kristian Lee

630.737.1200 Main | 815.954.1749 Cell

klee@schulzproperties.com | schulzproperties.com

1007 Curtiss, Suite 7, Downers Grove, Illinois 60515



This information has been obtained from sources believed reliable. We have not verified it and make no guarantee, warranty or representation about it. Any projections, opinions, assumptions or estimates used are for example only and do not represent the current or future performance of the property. You and your advisors should conduct a careful, independent investigation of the property to determine to your satisfaction the suitability of the property for your needs. Availability and terms of the property may change at any time without notice. Please contact Schulz Properties for the most current information.