

888-898 Veterans Memorial Highway
Hauppauge, New York

NEWMARK

HAUPPAUGE OFFICE PARK



Hauppauge Office Park, a 270,000 square foot Class A Office Complex, with striking, iconic architecture and unparalleled executive amenities is a benchmark for premium office space on Long Island.

Asking Rent: \$29.50 PRSF + Electric

888 Veterans Memorial Highway

- Partial 4th Floor: 5,919 RSF**
- Partial 4th Floor: 4,495 – 6,600 RSF**
- Partial 5th Floor: 5,564 - 12,000 RSF**
- Partial 5th Floor: 6,220 – 6,295 RSF**



898 Veterans Memorial Highway
Fully Leased

For further information please contact our exclusive agents:
Daniel Oliver, Managing Director 631-673-0807 doliver@ngkf.com
Jordan Oliver, Associate Director 631-673-0819 joliver@ngkf.com
Scott Berfas, Managing Director 631-673-0808 sberfas@ngkf.com

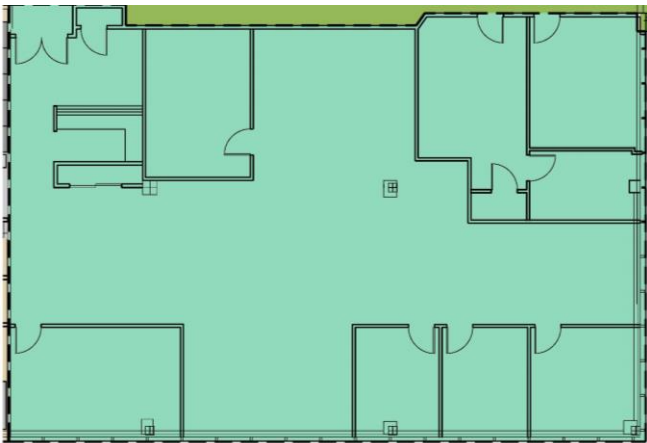
Procuring broker shall only be entitled to a commission, calculated in accordance with the rates approved by our principal only if such procuring broker executes a brokerage agreement acceptable to us and our principal and the conditions as set forth in the brokerage agreement are fully and unconditionally satisfied. Although all information furnished regarding property for sale, rental, or financing is from sources deemed reliable, such information has not been verified and no express representation is made nor is any to be implied as to the accuracy thereof and it is submitted subject to errors, omissions, change of price, rental or other conditions, prior sale, lease or financing, or withdrawal without notice and to any special conditions imposed by our principal.

Building Amenities

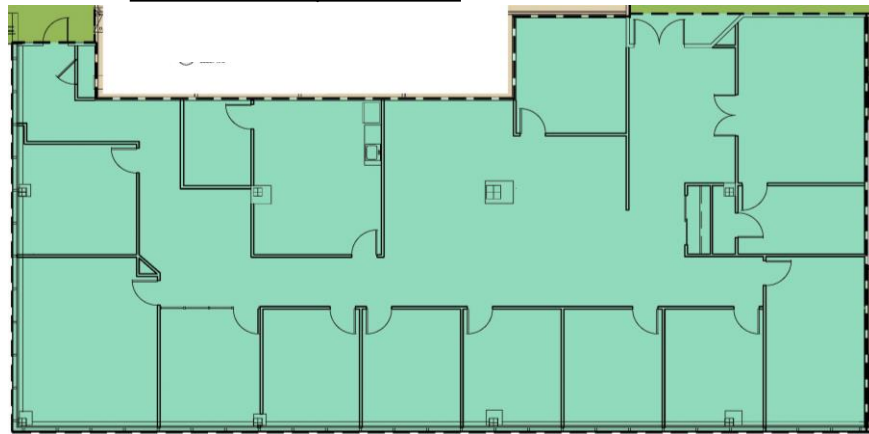
- Located off the Northern State Parkway & Long Island Expressway
- On-Site Management and Security
- Food Service with Indoor and Outdoor Seating
- Fully Equipped Fitness Center with Racquetball Courts
- Auditorium Style Conference Center with Executive Boardroom
- Full Service Bank Branch on Site
- Huge Parking Lots surrounding the complex
- Campus like environment with outdoor space for collaboration
- Landlord will build to suit

888 Veterans Memorial Hwy

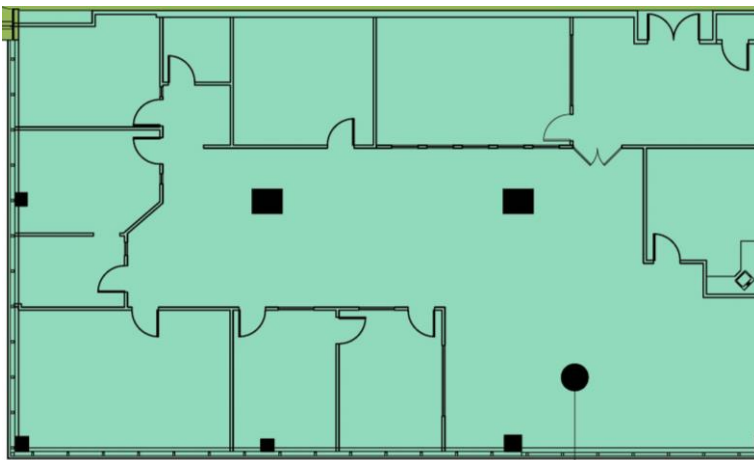
4th Floor: 4,495 RSF



4th Floor: 5,919 RSF



5th Floor: 5,564 RSF



5th Floor: 6,220 RSF

