



151 ROUTE 10 E, SUCCASUNNA, NJ, 07876

- Available Space: 1,800 SF
- Previous Medical Office Featuring:
 - 4 Exam Rooms
 - 1 Lab
 - 2 Private Offices
 - 2 Baths
 - Reception and Waiting Room
- Asking Price: **\$14.00 PSF + \$7.50 NNN + 5 months free rent for TI with 5-year lease**



Jennifer Corrao
Vice President

Office: 973-267-7778

Cell: 973-222-5944

jcorrao@weichertcommercial.com

John Negri

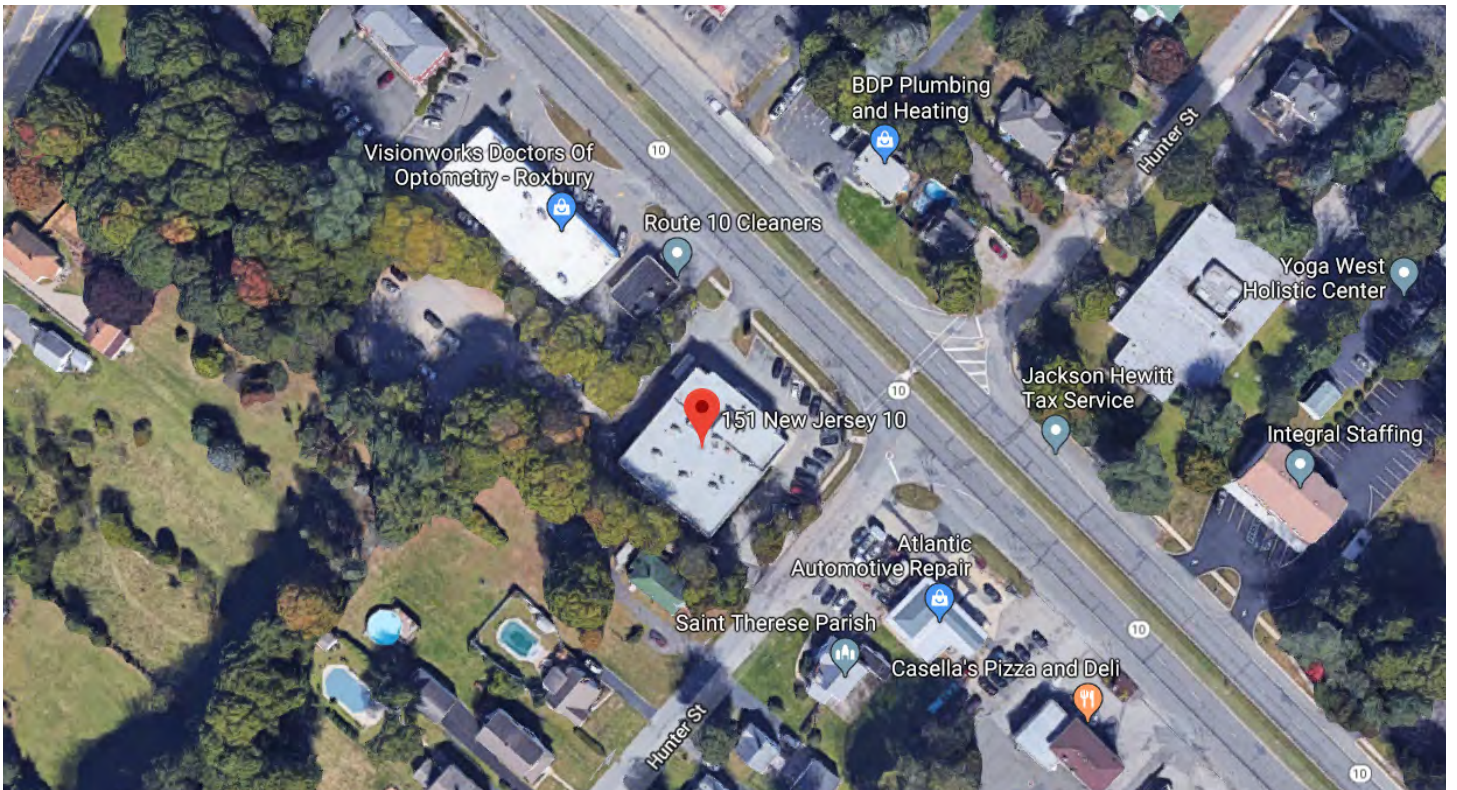
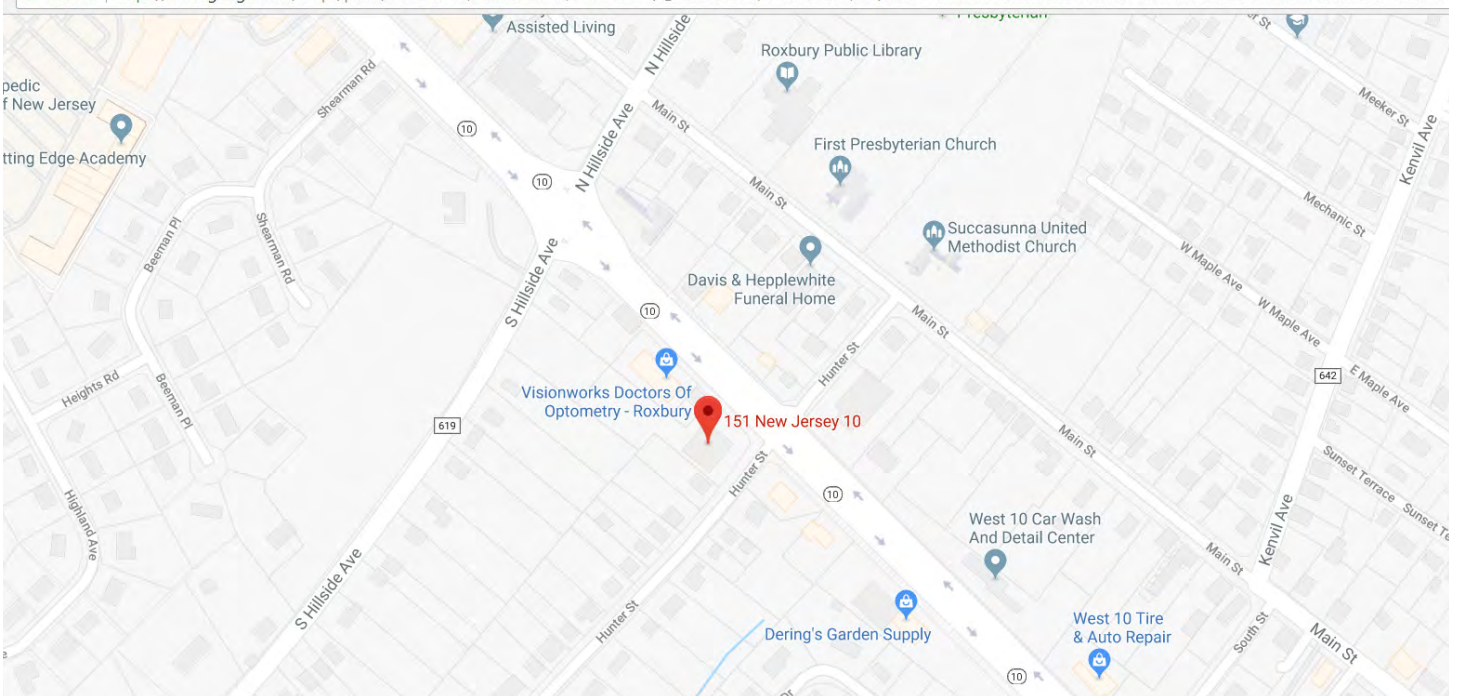
Senior Vice President

Office: 973-267-7778

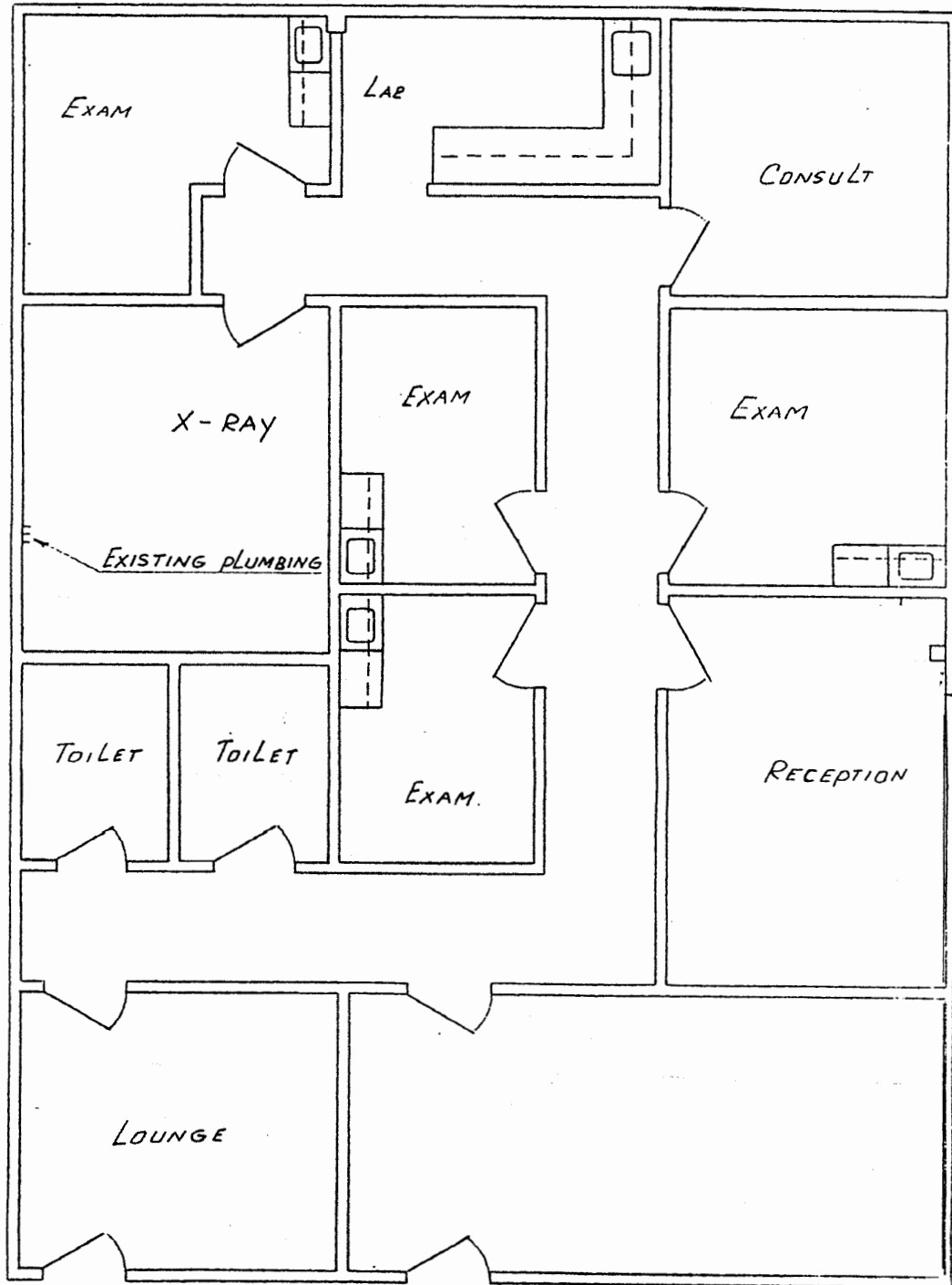
Cell: 973-865-3456

jnegri@weichertcommercial.com

LOCATION MAP



FLOOR PLAN



HALL WAY

DEMOGRAPHICS

	1 mile	3 miles	5 miles
Population			
2000 Population	5,038	31,462	102,625
2010 Population	4,940	32,294	104,650
2017 Population	5,114	32,864	106,867
2022 Population	5,222	33,270	108,216
2000-2010 Annual Rate	-0.20%	0.26%	0.20%
2010-2017 Annual Rate	0.48%	0.24%	0.29%
2017-2022 Annual Rate	0.42%	0.25%	0.25%
2017 Male Population	48.0%	48.8%	49.6%
2017 Female Population	52.0%	51.2%	50.4%
2017 Median Age	45.9	43.7	40.9

In the identified area, the current year population is 106,867. In 2010, the Census count in the area was 104,650. The rate of change since 2010 was 0.29% annually. The five-year projection for the population in the area is 108,216 representing a change of 0.25% annually from 2017 to 2022. Currently, the population is 49.6% male and 50.4% female.

2010 Residential Population:	104,650	2017 Total Sales (\$000)	\$13,182,525
2017 Residential Population:	106,867	2017 Total Employees	47,214
2022 Residential Population:	108,216	Employee/Residential Population Ratio:	0.44:1
Annual Population Growth 2017 - 2022	0.25%	Total Number of Businesses:	4,840

Households by Income	2017		2022	
	Number	Percent	Number	Percent
Household	2,082	100%	2,119	100%
<\$15,000	104	5.0%	96	4.5%
\$15,000-\$24,999	125	6.0%	113	5.3%
\$25,000-\$34,999	41	2.0%	36	1.7%
\$35,000-\$49,999	188	9.0%	165	7.8%
\$50,000-\$74,999	231	11.1%	191	9.0%
\$75,000-\$99,999	312	15.0%	287	13.5%
\$100,000-\$149,999	455	21.9%	485	22.9%
\$150,000-\$199,999	281	13.5%	325	15.3%
\$200,000+	346	16.6%	422	19.9%
Median Household Income	\$102,876		\$112,960	
Average Household Income	\$126,497		\$144,825	
Per Capita Income	\$48,803		\$55,532	

Data Note: Income is expressed in current dollars

Source: U.S. Census Bureau, Census 2010 Summary File 1. Esri forecasts for 2016 and 2021. Esri converted Census 2000 data into 2010 geography.