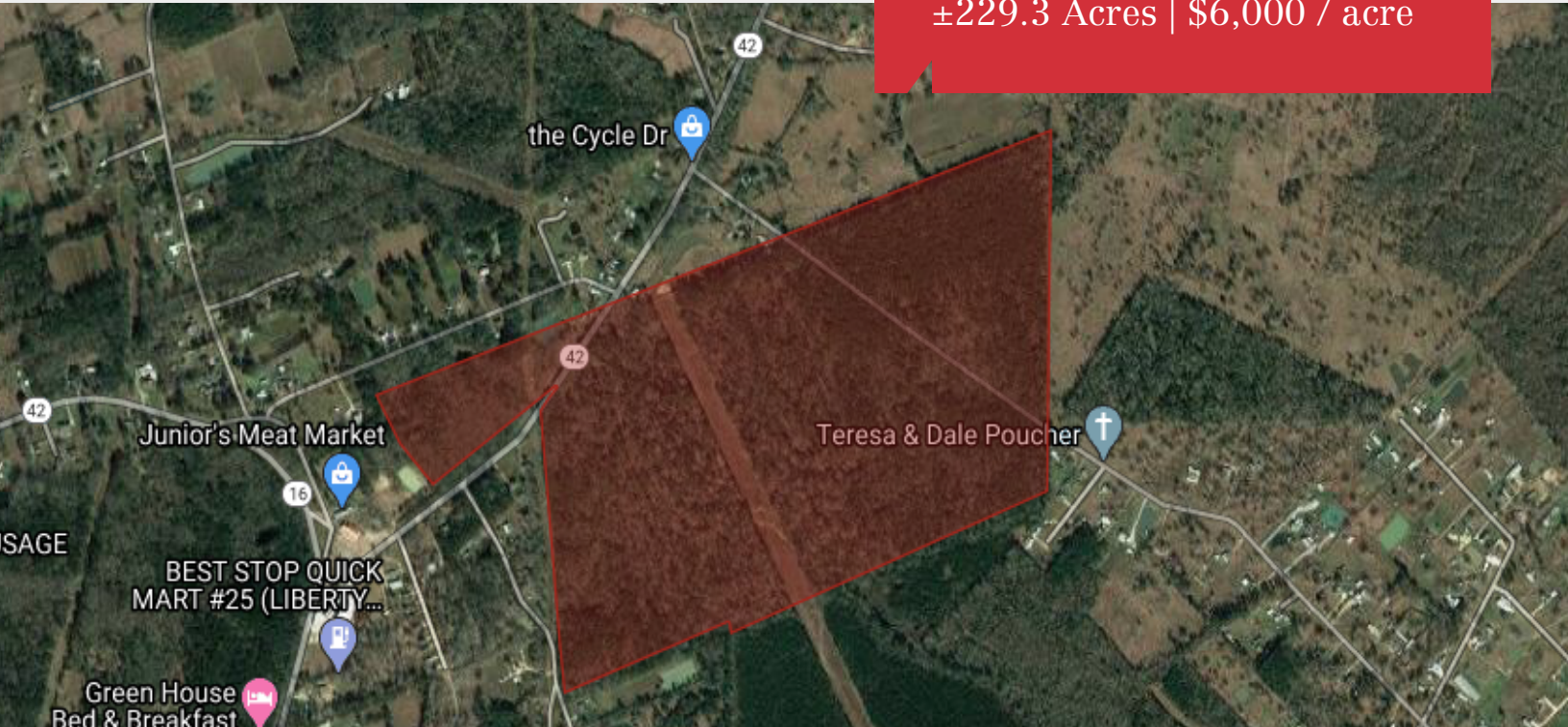


For Sale

Vacant Land

±229.3 Acres | \$6,000 / acre



Timber Tract 19

LA-42 & LA-16, French Settlement, Louisiana 70733

Property Highlights

- 229.34 Acres NNW of French Settlement, LA before Port Vincent
- Low Lying Wetland Area
- Great Access
- Located in Floodzone X and AE
- Some Residential Development in Surrounding Area

Sale Price

\$6,000 / acre



For more information

Ryan Greene, CCIM, SIOR

O: 225 297 7863 | C: 225 333 8715
rgreene@latterblum.com

Alex McCollam

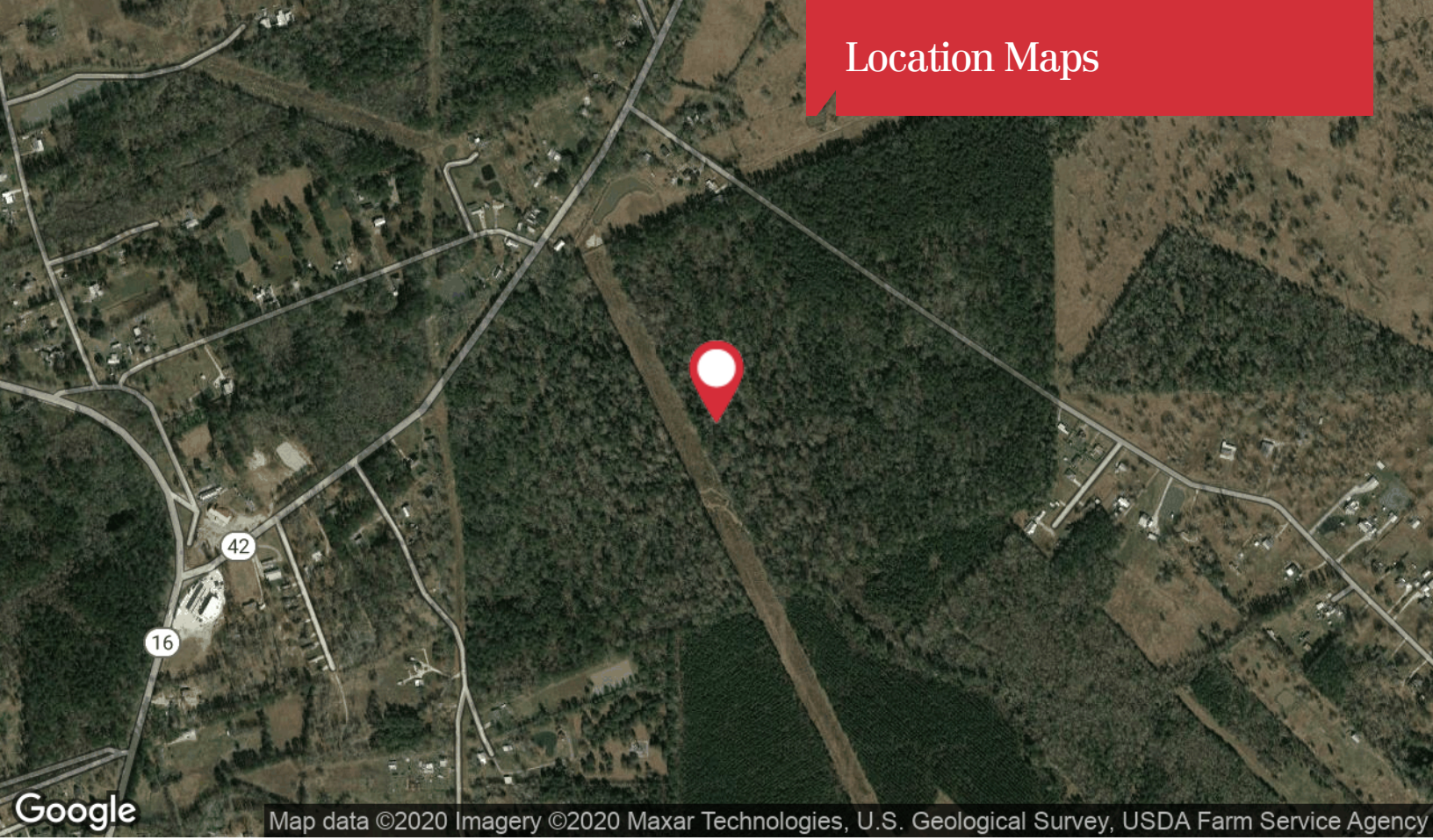
O: 225 295 0800 | C: 832 584 9162
alexm@latterblum.com

CALL OR EMAIL FOR MORE INFORMATION

NO WARRANTY OR REPRESENTATION, EXPRESS OR IMPLIED, IS MADE AS TO THE ACCURACY OF THE INFORMATION CONTAINED HEREIN, AND THE SAME IS SUBMITTED SUBJECT TO ERRORS, OMISSIONS, CHANGE OF PRICE, RENTAL OR OTHER CONDITIONS, PRIOR SALE, LEASE OR FINANCING, OR WITHDRAWAL WITHOUT NOTICE, AND OF ANY SPECIAL LISTING CONDITIONS IMPOSED BY OUR PRINCIPALS NO WARRANTIES OR REPRESENTATIONS ARE MADE AS TO THE CONDITION OF THE PROPERTY OR ANY HAZARDS CONTAINED THEREIN ARE ANY TO BE IMPLIED. LICENSED IN LOUISIANA.

1700 City Farm Drive
Baton Rouge, LA 70806
225 295 0800 tel
latterblum.com

Location Maps



Map data ©2020 Imagery ©2020 Maxar Technologies, U.S. Geological Survey, USDA Farm Service Agency



Map data ©2020

Flood Map

