

## PRIME RETAIL SPACE AVAILABLE IN CANTON



Join Lighthouse Liquors, Raw & Refined and the Marina!

### AVAILABLE RETAIL SUITE

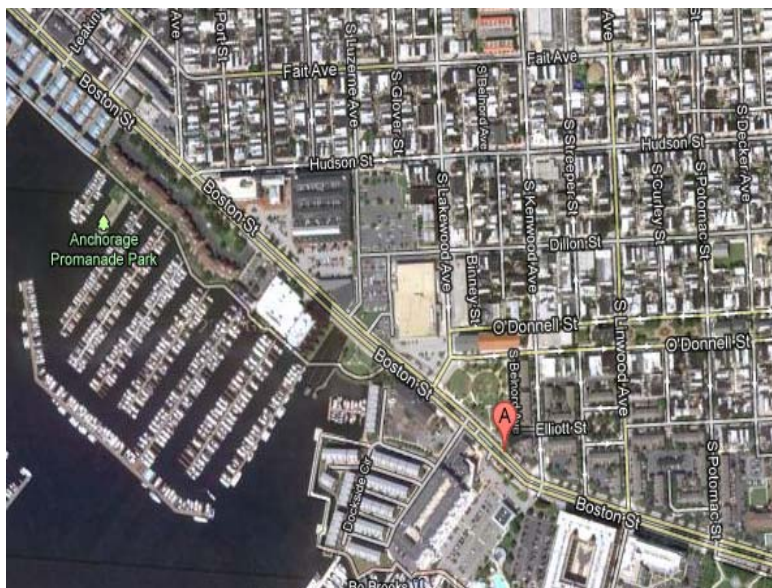
- 1,479 sq ft

### PROPERTY FEATURES

- Boston Street visibility
- High traffic volume on Boston Street
- Free on-site parking
- Building & Monument Signage
- SHORT TERM RENTALS!!

### RENTAL RATE

- ONLY \$17.00 per sq ft, plus utilities and janitorial



### FOR ADDITIONAL INFORMATION, CONTACT

DOUGLAS M. KAUFMAN

443.459.9411

[dkaufman@agmcommercial.com](mailto:dkaufman@agmcommercial.com)

MICHAEL BENDER

410.935.9408

[mbender@agmcommercial.com](mailto:mbender@agmcommercial.com)

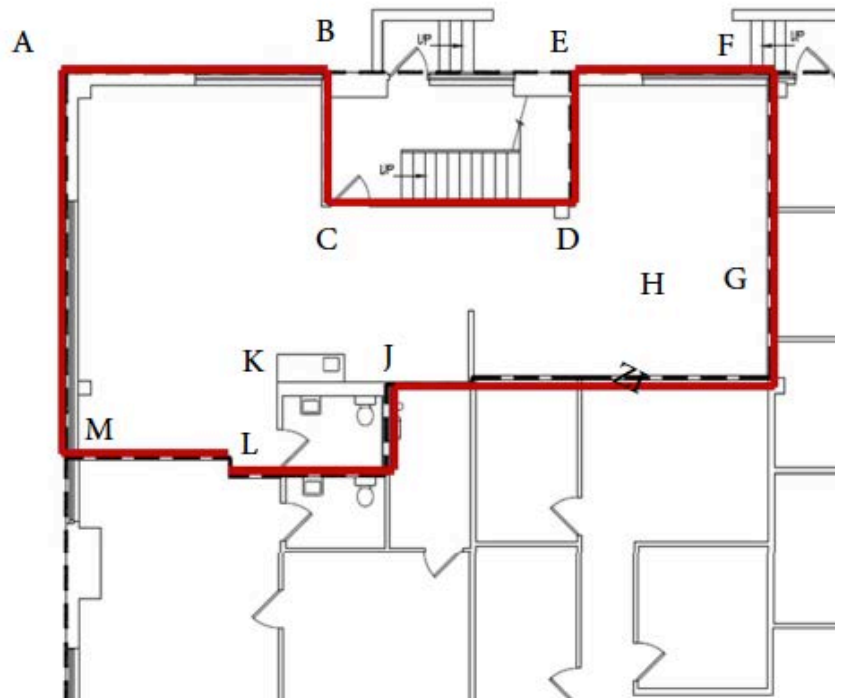
2760 Boston Street  
Baltimore, MD 21224



## PRIME RETAIL SPACE AVAILABLE IN CANTON

2760 Boston Street  
Baltimore, MD 21224

A to B: 19'  
B to C: 9.5'  
C to D: 19.5'  
D to E: 10.5'  
E to F: 15'  
F to G: 15.5'  
G to H: 8.75'  
H to I: 6.5'  
J to K: 8'  
K to L:  
L to M: 16'  
M to A: 28.75'  
G to M: 54'  
Kitchenette: 6'



### FOR ADDITIONAL INFORMATION, CONTACT

DOUGLAS M. KAUFMAN

443.459.9411

[dkaufman@agmcommercial.com](mailto:dkaufman@agmcommercial.com)

MICHAEL BENDER

410.935.9408

[mbender@agmcommercial.com](mailto:mbender@agmcommercial.com)