

# AVAILABLE FOR LEASE

250 Lafayette Circle, Suite 200

Lafayette

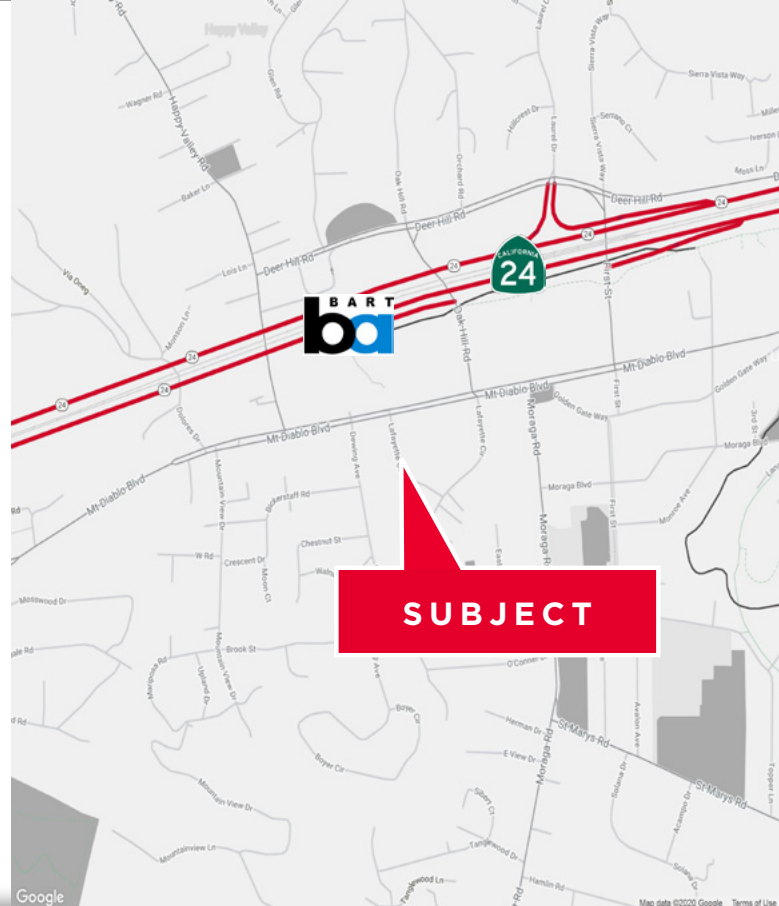


## PROPERTY HIGHLIGHTS

- » ±1,709 square feet
- » Available now
- » Call brokers for pricing
- » Walking distance to Lafayette BART
- » Immediate walking distance to retail, restaurants and business amenities

©2020 Cushman & Wakefield. All rights reserved. The information contained in this communication is strictly confidential. This information has been obtained from sources believed to be reliable but has not been verified. NO WARRANTY OR REPRESENTATION, EXPRESS OR IMPLIED, IS MADE AS TO THE CONDITION OF THE PROPERTY (OR PROPERTIES) REFERENCED HEREIN OR AS TO THE ACCURACY OR COMPLETENESS OF THE INFORMATION CONTAINED HEREIN, AND SAME IS SUBMITTED SUBJECT TO ERRORS, OMISSIONS, CHANGE OF PRICE, RENTAL OR OTHER CONDITIONS, WITHDRAWAL WITHOUT NOTICE, AND TO ANY SPECIAL LISTING CONDITIONS IMPOSED BY THE PROPERTY OWNER(S). ANY PROJECTIONS, OPINIONS OR ESTIMATES ARE SUBJECT TO UNCERTAINTY AND DO NOT SIGNIFY CURRENT OR FUTURE PROPERTY PERFORMANCE.

[View Site Specific COVID-19 Prevention Plan](#)



**BETSY ZIMMERMANN**

925.627.2896

[betsy.zimmermann@cushwake.com](mailto:betsy.zimmermann@cushwake.com)

LIC# 01864073

**TIM HOGAN**

415.694.6477

[tim.hogan@cushwake.com](mailto:tim.hogan@cushwake.com)

LIC# 01375367

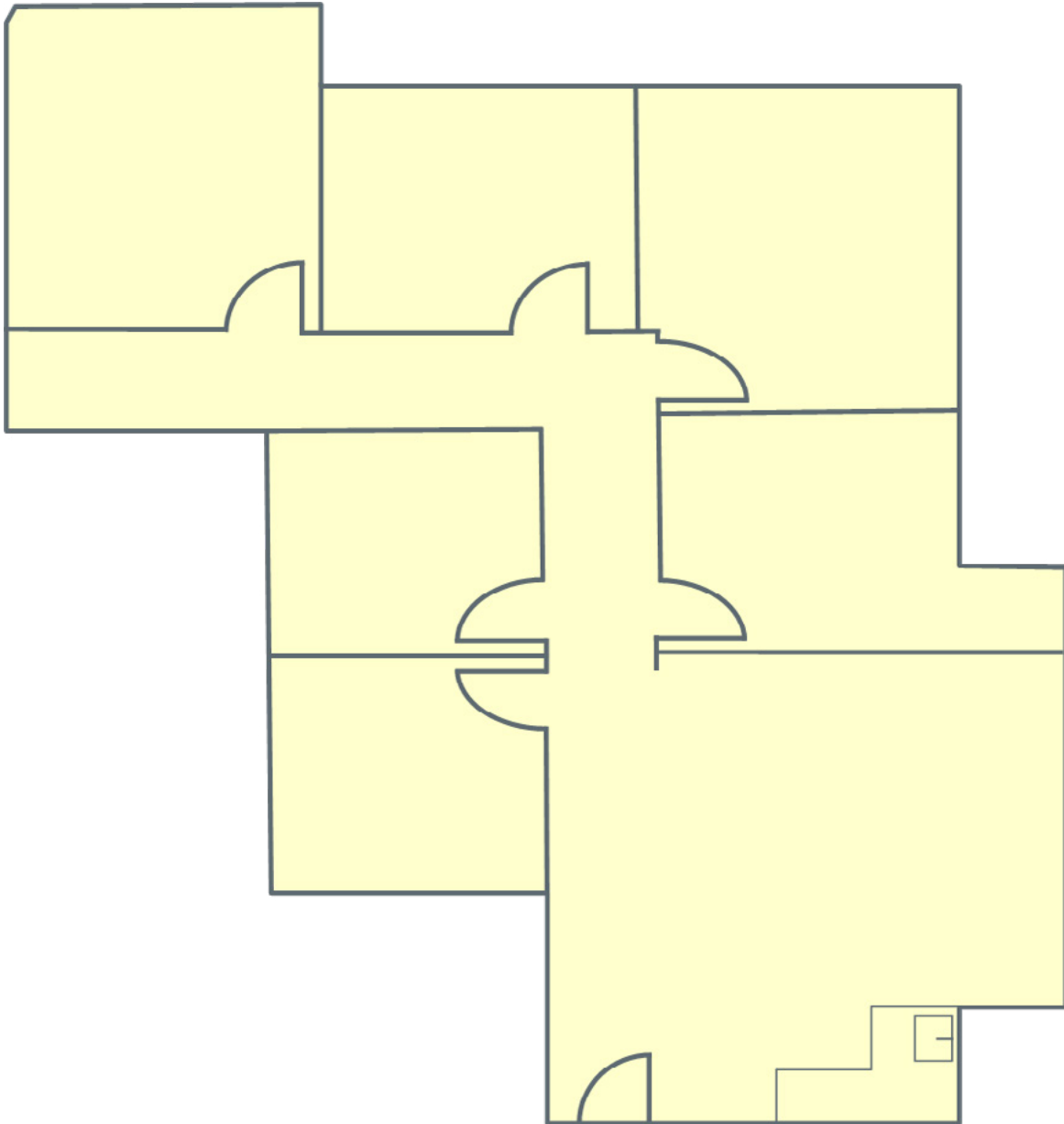


**CUSHMAN & WAKEFIELD**

1333 N California Blvd, Suite 500  
Walnut Creek, CA 94567

[www.cushmanwakefield.com](http://www.cushmanwakefield.com)

## SUITE 200



**BETSY ZIMMERMANN**

925.627.2896

[betsy.zimmermann@cushwake.com](mailto:betsy.zimmermann@cushwake.com)

LIC# 01864073

**TIM HOGAN**

415.694.6477

[tim.hogan@cushwake.com](mailto:tim.hogan@cushwake.com)

LIC# 01375367



1333 N California Blvd, Suite 500  
Walnut Creek, CA 94567

[www.cushmanwakefield.com](http://www.cushmanwakefield.com)