

## FOR LEASE Junior Anchor Space Available in Jewel Center

7342 West Foster Avenue | Chicago, Illinois



### Property Profile

Space Available	+/- 35,540 square feet
Area Retailers	Jewel-Osco, Pet Supplies Plus, Ace Hardware, O'Reilly Automotive, Planet Fitness
Traffic Counts	31,653 VPD (Harlem Ave) 12,114 VPD (Foster Ave)

### Demographics

	1 mile	3 miles	5 miles
Population	26,676	107,908	226,373
Average HHI	\$71,319	\$73,695	\$78,647
Households	10,687	43,751	88,485
Employment	12,481	46,263	95,091

### Property Highlights

- Rare junior anchor space available in City of Chicago
- Great daily needs co-tenancy in shopping center including Jewel-Osco and Planet Fitness
- Rooftop signage and pylon position available at hard corner
- Located just south of I-90 interchange and 1 mile north of Harlem Irving Plaza, anchored by Target, Kohl's, and Best Buy

### Contact

Michael Havdala  
 p 312.458.4318  
 mhavdala@hsacommercial.com

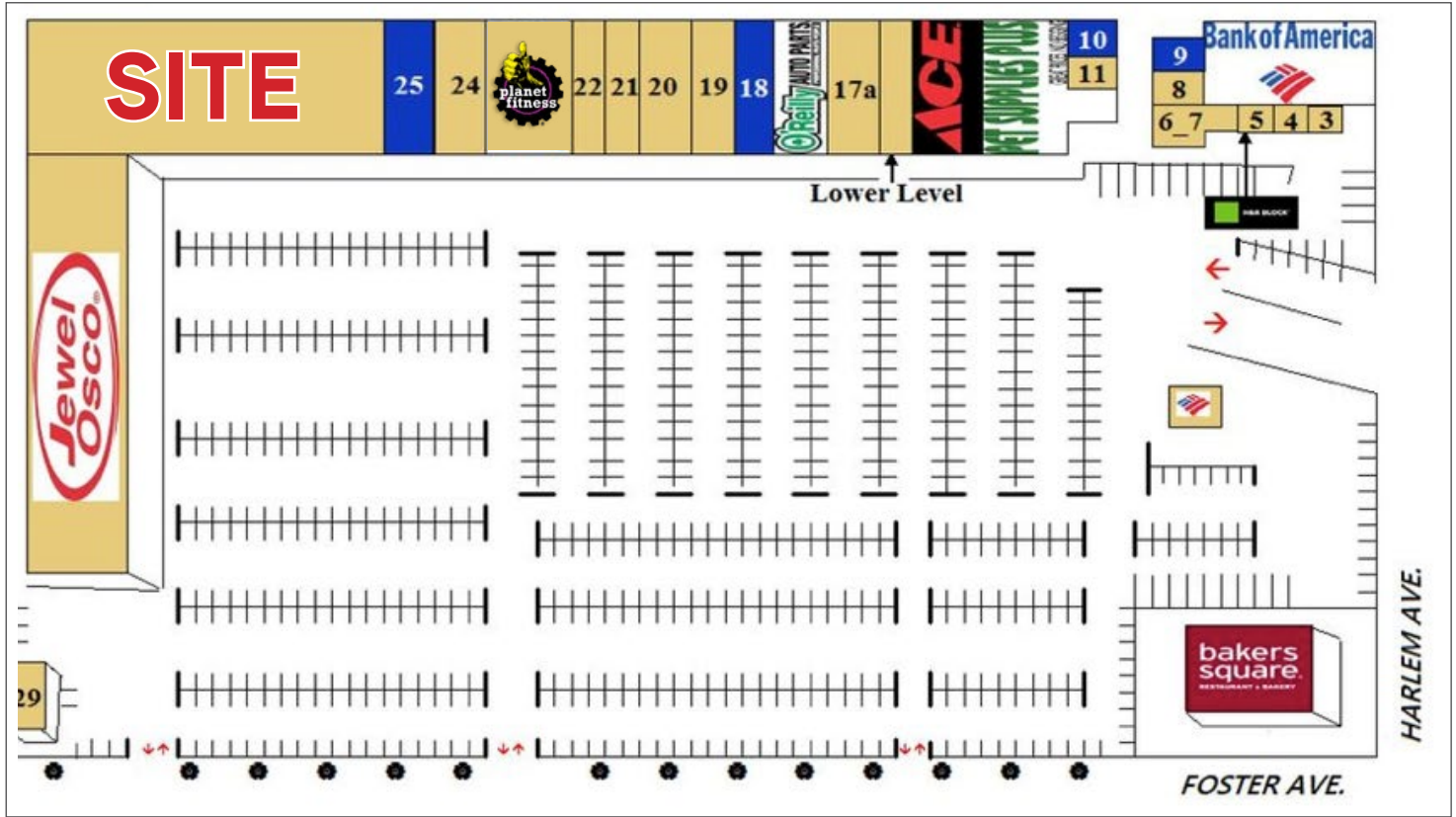
Brenton Schrader  
 p 312.458.4392  
 bschrader@hsacommercial.com



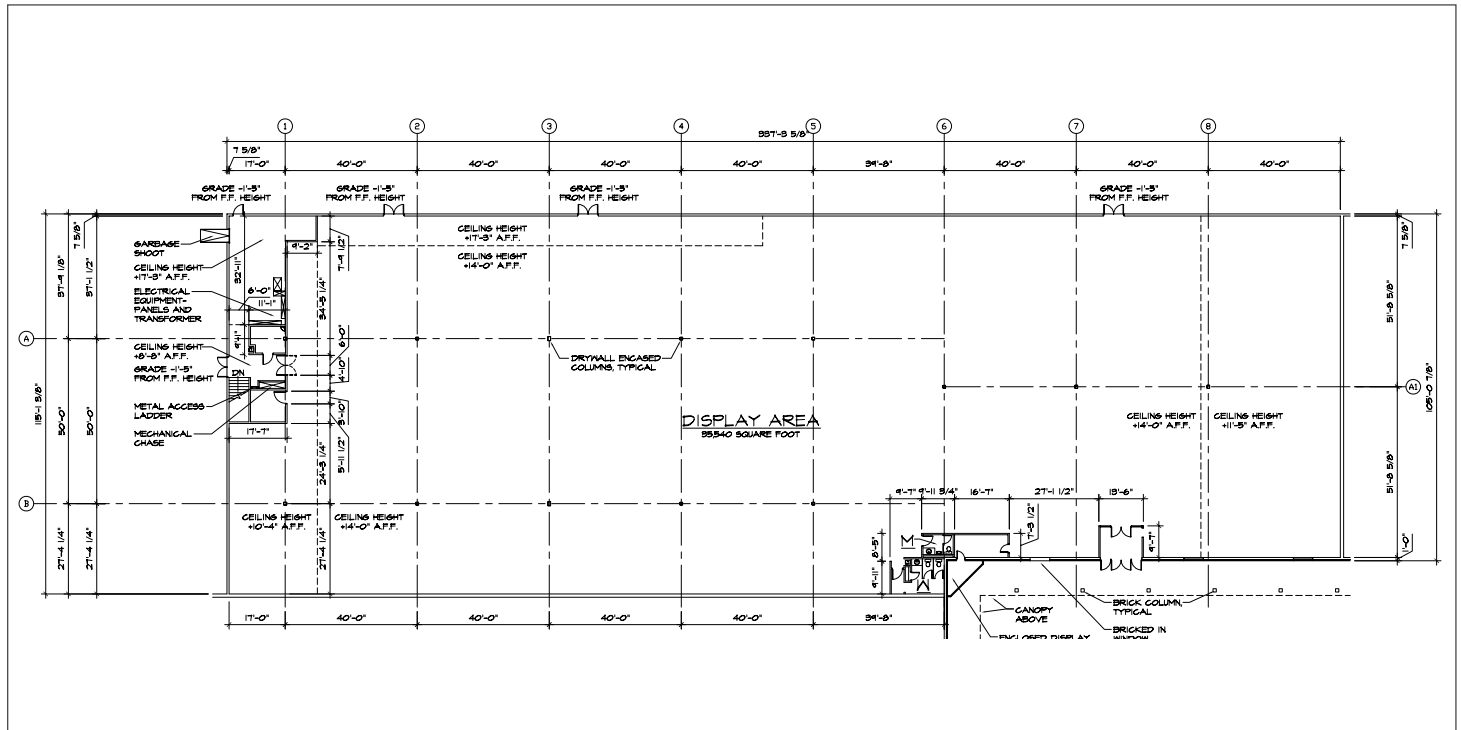
# FOR LEASE Junior Anchor Space Available in Jewel Center

7342 West Foster Avenue | Chicago, Illinois

## Site Plan



## Floor Plan

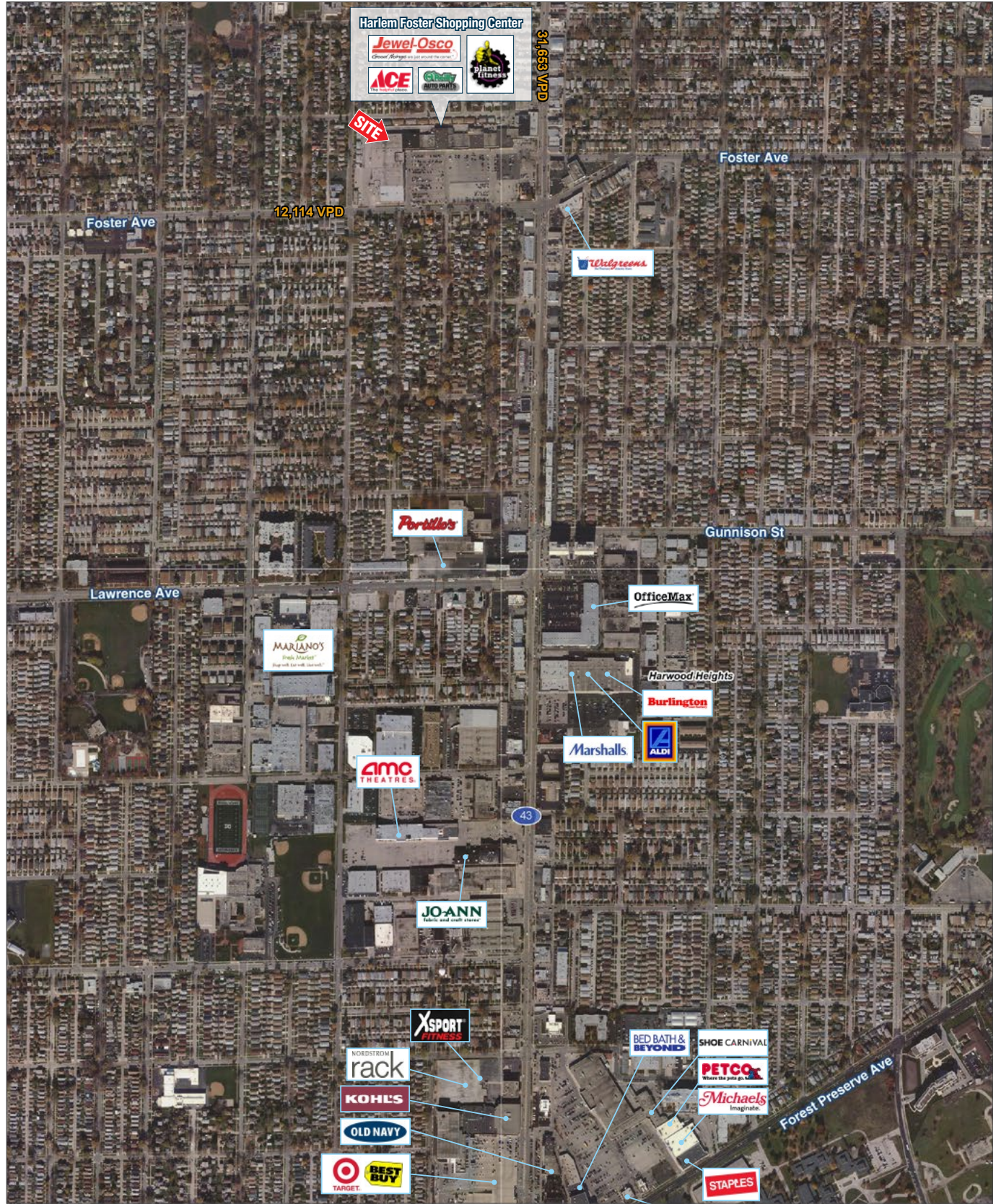




# FOR LEASE Junior Anchor Space Available in Jewel Center

7342 West Foster Avenue | Chicago, Illinois

## Market Aerial



HSA Commercial: 100 S Wacker Drive, Suite 950 | Chicago, Illinois 60606 | www.hsacommercial.com

Above information is subject to verification and no liability for errors or omissions is assumed. Price is subject to change and listing may be withdrawn without notice.