



FOR SALE | INDUSTRIAL

140 E North Street, Kirkland, IL > \$170,000



Property Features

5000 +/- SFT Industrial Building on 0.6 acres, room to expand!

2 Drive in Doors

900+ AMPs, 480V, 3 Phase Power

Fully climate controlled - block construction

Zoned IND, Industrial

2 Private offices, M&W restrooms, break area, workshop, 10' ceilings, fluorescent lights, off street parking.



RVGCOMMERCIAL.COM

Denise Weinmann, CCIM, SIOR
dweinmann@rvgcommercial.com
815-739-9382 Cell / 815-754-4000 Off

Mark Sawyer, Broker
msawyer@rvgcommercial.com
815-757-1650 Cell / 815-754-4000 Off



PICTURES

140 E North Street
Kirkland, IL 60146



Industrial building

2 Lg offices inside south entry

Industrial Zoning

Fully climate controlled

5,000 Square Feet

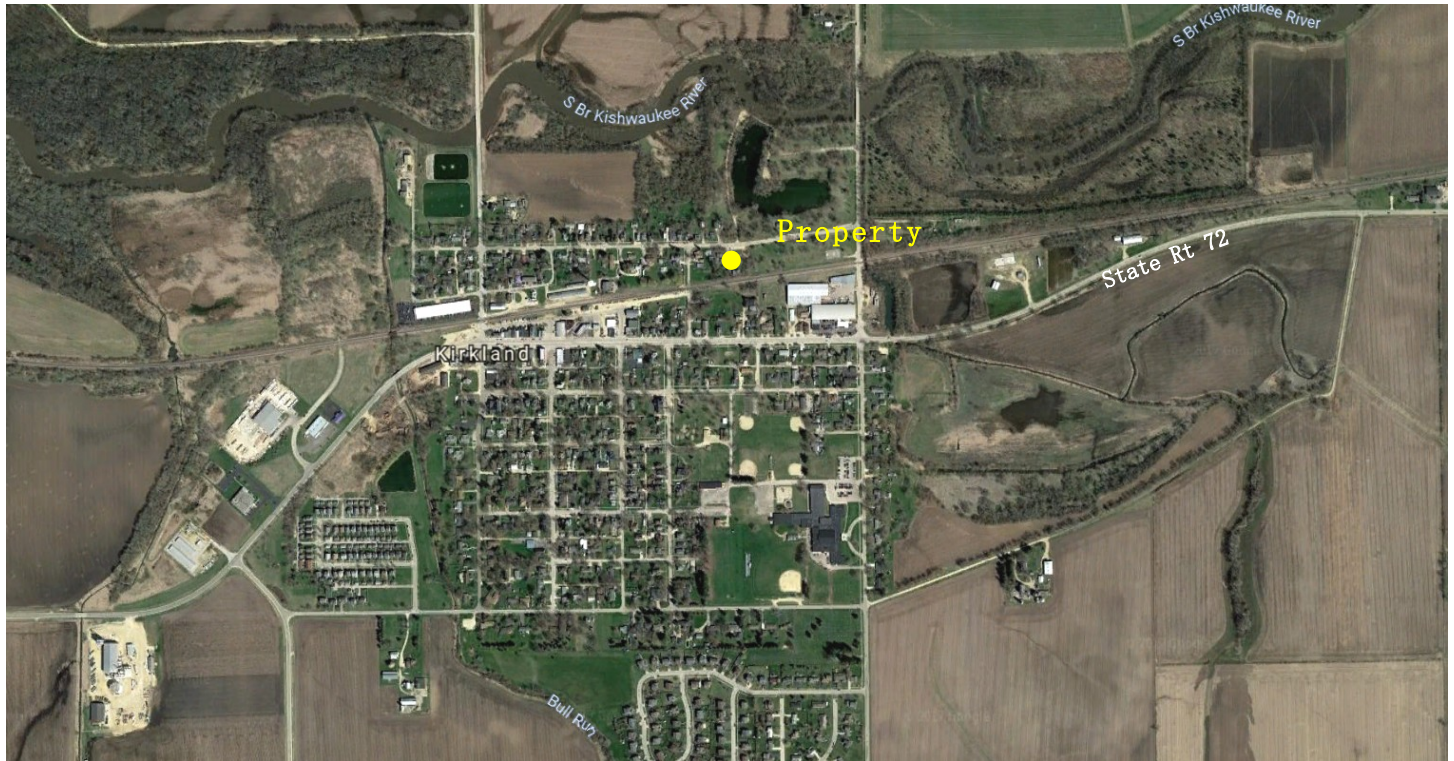
.6 acres allows for expansion



RVGCOMMERCIAL.COM

LOCATION

140 E North Street
Kirkland, IL 60146



Heavy Industrial

Located in Kirkland, IL

Just north off State Hwy 72

Zoned Industrial

