

TOWER
52
150E52ND

SUMMER BROKER BONUS!
ADDITIONAL COMMISSION OF \$3.00 PER RSF
FOR LEASES SIGNED PRIOR TO
SEPTEMBER 30, 2022
WITH TENANTS NEW TO THE BUILDING



**MOVE-IN
READY**



TRANSIT-ORIENTED



**PROXIMATE TO
UPSCALE DINING**



**NEARBY FITNESS/
WELLNESS OPTIONS**

AVAILABILITIES

| FLOOR | SIZE | CONDITION | CONFIGURATION | AVAILABILITY | VIRTUAL TOUR |
|-------|-------|-----------------|------------------------------------------------------------------------------------------------------------------|--------------|------------------------------|
| P6th | 8,065 | Newly Renovated | 8-Offices, 38 in-Open Area, 12-Person Conference Room, 4 Person Meeting-Room, Eat-In Pantry, Reception | Leased | |
| P3rd | 4,590 | Raw | 6 Offices, 32 in Open Area, 10 Person Conference Room, 6 Person Meeting Room, Pantry, Reception, To be Furnished | Arranged | |
| P3rd | 2,695 | Pre-Built | 2 Offices, 17 in Open Area, 10 Person Conference Room, Pantry, Reception, To be Furnished | Immediate | VIRTUAL TOUR |
| P3rd | 3,398 | Pre-Built | 2 Offices, 25 in Open Area, 10 Person Conference Room, Pantry, Reception, To be Furnished | Immediate | VIRTUAL TOUR |

[DOWNLOAD FLOOR PLANS](#)

[DOWNLOAD IMAGES](#)



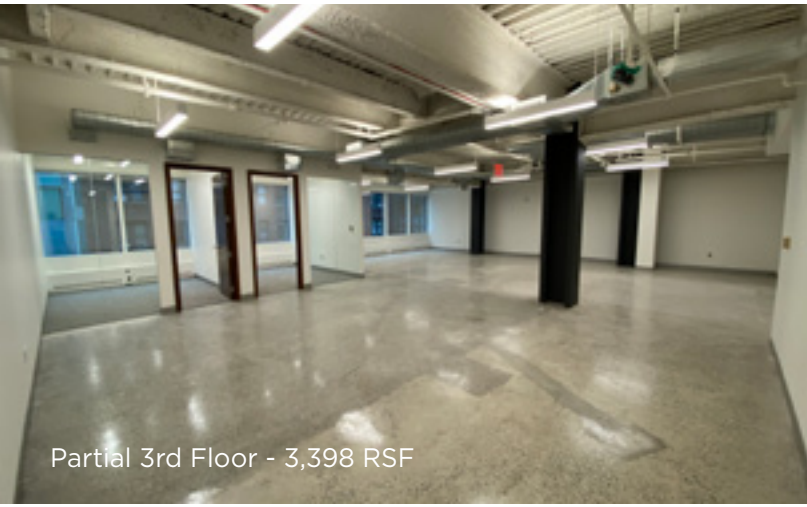
Lobby



Partial 3rd Floor - 2,695 RSF



Partial 3rd Floor - 2,695 RSF



Partial 3rd Floor - 3,398 RSF



Partial 3rd Floor - 3,398 RSF



Partial 6th Floor - 8,065 RSF



Partial 6th Floor - 8,065 RSF



Partial 6th Floor - 8,065 RSF

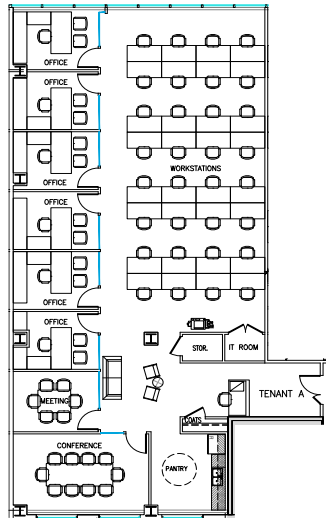


Partial 6th Floor - 8,065 RSF

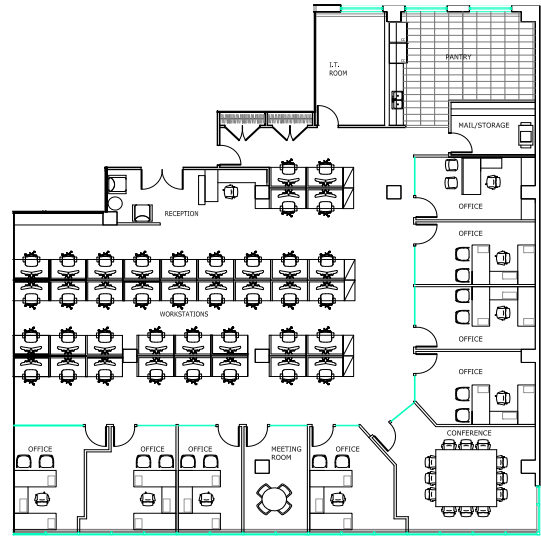


Partial 6th Floor - 8,065 RSF

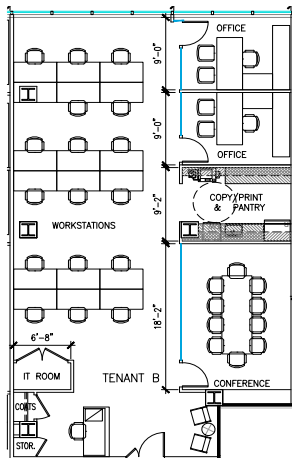
PARTIAL 3RD FLOOR **4,590 RSF**



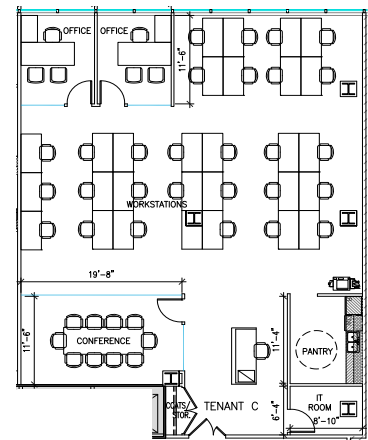
PARTIAL 6TH FLOOR **8,065 RSF**



PARTIAL 3RD FLOOR **2,695 RSF**



PARTIAL 3RD FLOOR **3,398 RSF**



NEIGHBORHOOD AMENITIES



- | | | |
|-----------------------------|-----------------------------|------------------------------|
| 1. The Grill | 11. University Club | 21. Omni Hotel |
| 2. The Pool | 12. St. Patrick's Cathedral | 22. Lotte New York |
| 3. Lobster Club | 13. Equinox | 23. Cellini |
| 4. Bobby Vans | 14. W New York | 24. Maloney & Porcelli |
| 5. Saks Fifth Avenue | 15. OBAO | 25. The Museum of Modern Art |
| 6. St. Bartholomew's Church | 16. Racquet & Tennis Club | 26. The National |
| 7. Waldorf Astoria | 17. Casa-Lever | 27. Intercontinental Hotel |
| 8. Peninsula Hotel | 18. The Monkey Bar | 28. Urban Space |
| 9. St. Regis Hotel | 19. Vermilion | 29. Food Hall |
| 10. Smith & Wollensky | 20. Sparks Steak House | |

HARRY F. BLAIR
212 841 5996
harry.blair@cushwake.com

SEAN N. KEARNS
212 841 7517
sean.kearns@cushwake.com

CUSHMAN & WAKEFIELD
1290 Avenue of Americas
New York, NY 10104
cushmanwakefield.com

PRINCETON
INTERNATIONAL PROPERTIES
CUSHMAN & WAKEFIELD