

7912-7918

Metrose Avenue



Todd Nathanson (818) 501-2204, todd@illicre.com, DRE# 00932779

Rachel Adams (818) 697-9375, rachel@illicre.com, DRE# 02052879

Please visit us at:



This information has been secured from sources we believe to be reliable, but we make no representations or warranties, expressed or implied, as to the accuracy of the information. References to square footage are approximate. References to neighboring retailers are subject to change, and may not be adjacent to the vacancy being marketed either prior to, during, or after leases are signed. Lessee must verify the information and bears all risk for any inaccuracies.

5990 Sepulveda Blvd., Ste. 600 · Sherman Oaks, CA 91411 · 818.501.2212/Phone · 818.501.2202/Fax · www.illicre.com · DRE #01834124



7912-7918

Melrose Avenue

PROPERTY FEATURES

- Suite 4—500 SF Second floor walk up.
- Restroom in unit
- Unit has Kitchenette and hard wood flooring



Todd Nathanson (818) 501-2204, todd@illicre.com, DRE# 00932779
Rachel Adams (818) 697-9375, rachel@illicre.com, DRE# 02052879

Please visit us at:



This information has been secured from sources we believe to be reliable, but we make no representations or warranties, expressed or implied, as to the accuracy of the information. References to square footage are approximate. References to neighboring retailers are subject to change, and may not be adjacent to the vacancy being marketed either prior to, during, or after leases are signed. Lessee must verify the information and bears all risk for any inaccuracies.

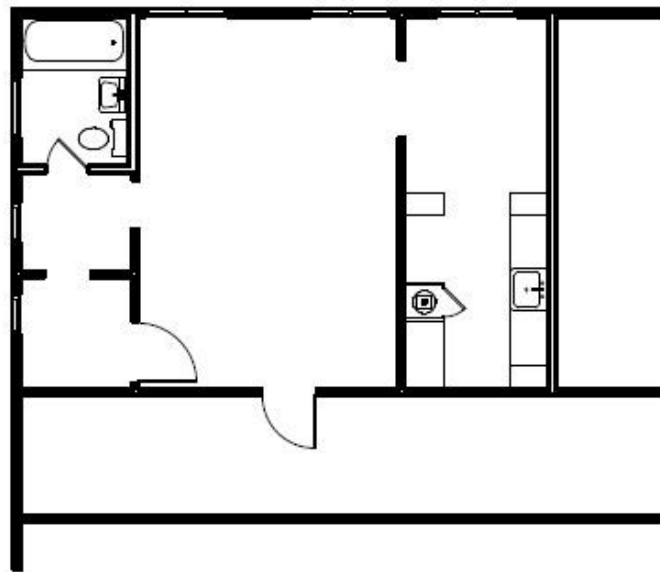
5990 Sepulveda Blvd., Ste. 600 · Sherman Oaks, CA 91411 · 818.501.2212/Phone · 818.501.2202/Fax · www.illicre.com · DRE #01834124



7912-7918 *Metrose Avenue*

FLOOR PLAN

Suite 4



Todd Nathanson (818) 501-2204, todd@illicre.com, DRE# 00932779
Rachel Adams (818) 697-9375, rachel@illicre.com, DRE# 02052879

Please visit us at:



This information has been secured from sources we believe to be reliable, but we make no representations or warranties, expressed or implied, as to the accuracy of the information. References to square footage are approximate. References to neighboring retailers are subject to change, and may not be adjacent to the vacancy being marketed either prior to, during, or after leases are signed. Lessee must verify the information and bears all risk for any inaccuracies.

5990 Sepulveda Blvd., Ste. 600 · Sherman Oaks, CA 91411 · 818.501.2212/Phone · 818.501.2202/Fax · www.illicre.com · DRE #01834124



7912-7918
Metrose Avenue



Todd Nathanson (818) 501-2204, todd@illicre.com, DRE# 00932779
Rachel Adams (818) 697-9375, rachel@illicre.com, DRE# 02052879

Please visit us at:



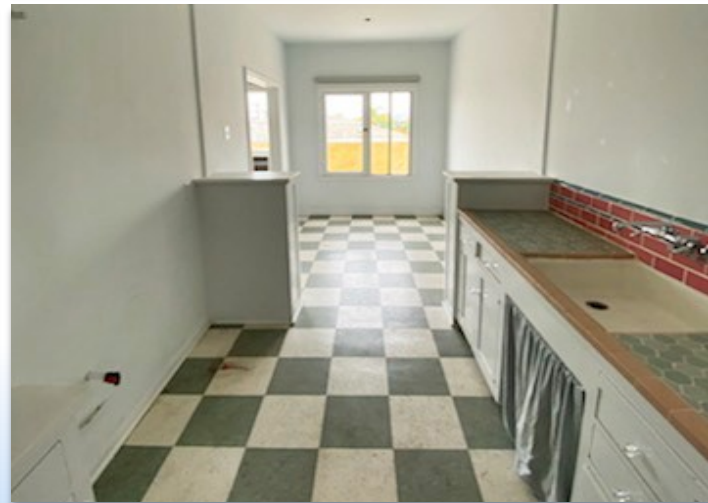
This information has been secured from sources we believe to be reliable, but we make no representations or warranties, expressed or implied, as to the accuracy of the information. References to square footage are approximate. References to neighboring retailers are subject to change, and may not be adjacent to the vacancy being marketed either prior to, during, or after leases are signed. Lessee must verify the information and bears all risk for any inaccuracies.

5990 Sepulveda Blvd., Ste. 600 · Sherman Oaks, CA 91411 · 818.501.2212/Phone · 818.501.2202/Fax · www.illicre.com · DRE #01834124



7912-7918 *Metrose Avenue*

SUITE 5



Todd Nathanson (818) 501-2204, todd@illicre.com, DRE# 00932779
Rachel Adams (818) 697-9375, rachel@illicre.com, DRE# 02052879

Please visit us at:



This information has been secured from sources we believe to be reliable, but we make no representations or warranties, expressed or implied, as to the accuracy of the information. References to square footage are approximate. References to neighboring retailers are subject to change, and may not be adjacent to the vacancy being marketed either prior to, during, or after leases are signed. Lessee must verify the information and bears all risk for any inaccuracies.

5990 Sepulveda Blvd., Ste. 600 · Sherman Oaks, CA 91411 · 818.501.2212/Phone · 818.501.2202/Fax · www.illicre.com · DRE #01834124



7912-7918

Melrose Avenue

AREA AMENITIES

- Quiet office suit in vibrant retail and office building
- Rare opportunity to lease small office space in thriving Melrose shopping district
- High foot traffic
- Located on the famous corner of Melrose and Fairfax

Bank of America

CHUCK'S VINTAGE
MADE IN THE U.S.A.

REVOLVE

Fred Segal

IMPROV
COMEDY CLUB

DASH
BY KARDASHIAN

JONATHAN
ADLER

GLAMBOUTIQUE
WHERE FASHION LIVES

MELROSE AVENUE
CRESCENT HEIGHTS

adidas
ORIGINALS

Agent
Provocateur

NORTH FAIRFAX AVENUE

Beth Eluzer Kahal
Jtzchok Synagogue

Todd Nathanson (818) 501-2204, todd@illicre.com, DRE# 00932779
Rachel Adams (818) 697-9375, rachel@illicre.com, DRE# 02052879

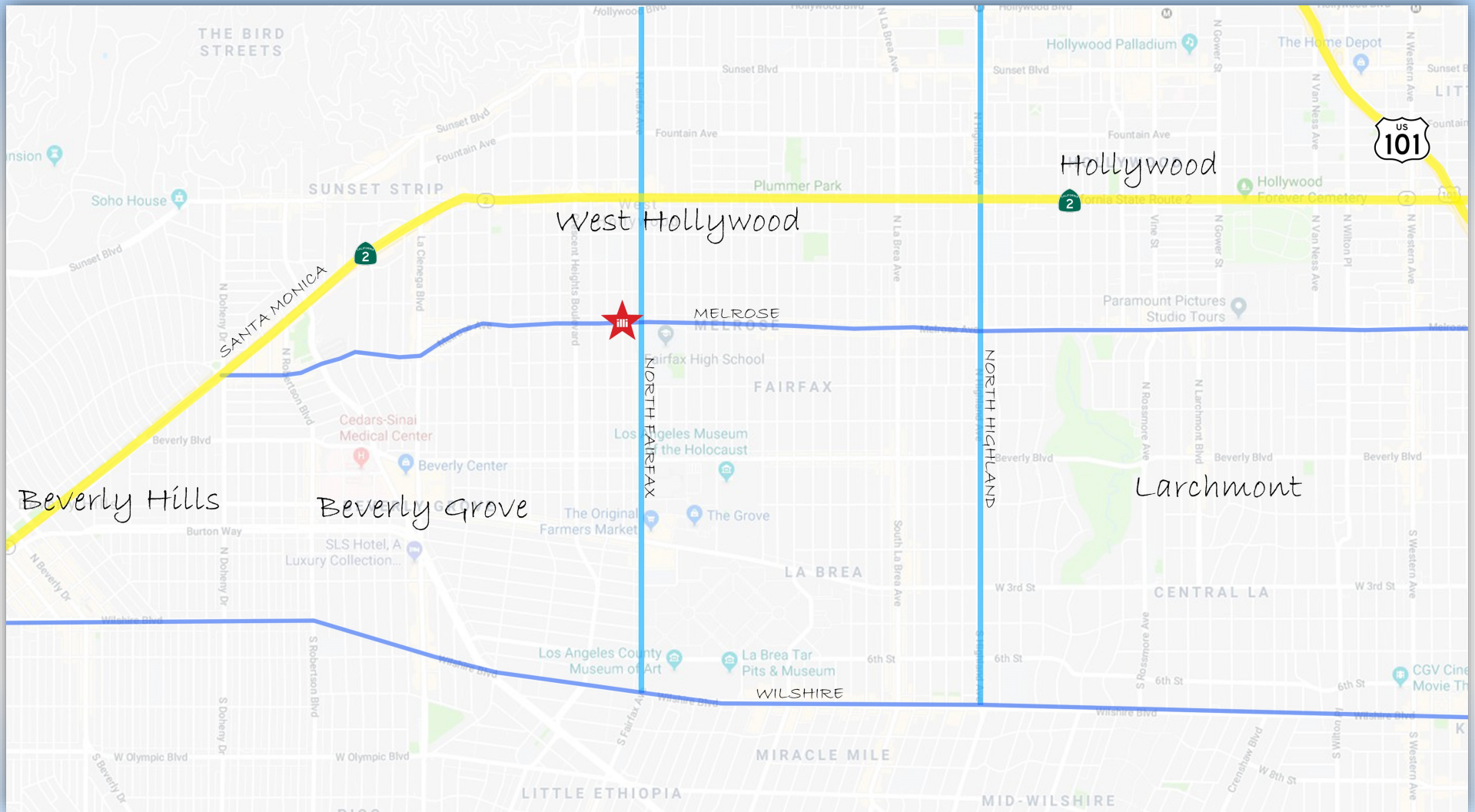
Please visit us at:



This information has been secured from sources we believe to be reliable, but we make no representations or warranties, expressed or implied, as to the accuracy of the information. References to square footage are approximate. References to neighboring retailers are subject to change, and may not be adjacent to the vacancy being marketed either prior to, during, or after leases are signed. Lessee must verify the information and bears all risk for any inaccuracies.

5990 Sepulveda Blvd., Ste. 600 · Sherman Oaks, CA 91411 · 818.501.2212/Phone · 818.501.2202/Fax · www.illicre.com · DRE #01834124

7912-7918 Melrose Avenue



Todd Nathanson (818) 501-2204, todd@illicre.com, DRE# 00932779
Rachel Adams (818) 697-9375, rachel@illicre.com, DRE# 02052879

Please visit us at:



This information has been secured from sources we believe to be reliable, but we make no representations or warranties, expressed or implied, as to the accuracy of the information. References to square footage are approximate. References to neighboring retailers are subject to change, and may not be adjacent to the vacancy being marketed either prior to, during, or after leases are signed. Lessee must verify the information and bears all risk for any inaccuracies.

5990 Sepulveda Blvd., Ste. 600 · Sherman Oaks, CA 91411 · 818.501.2212/Phone · 818.501.2202/Fax · www.illicre.com · DRE #01834124

