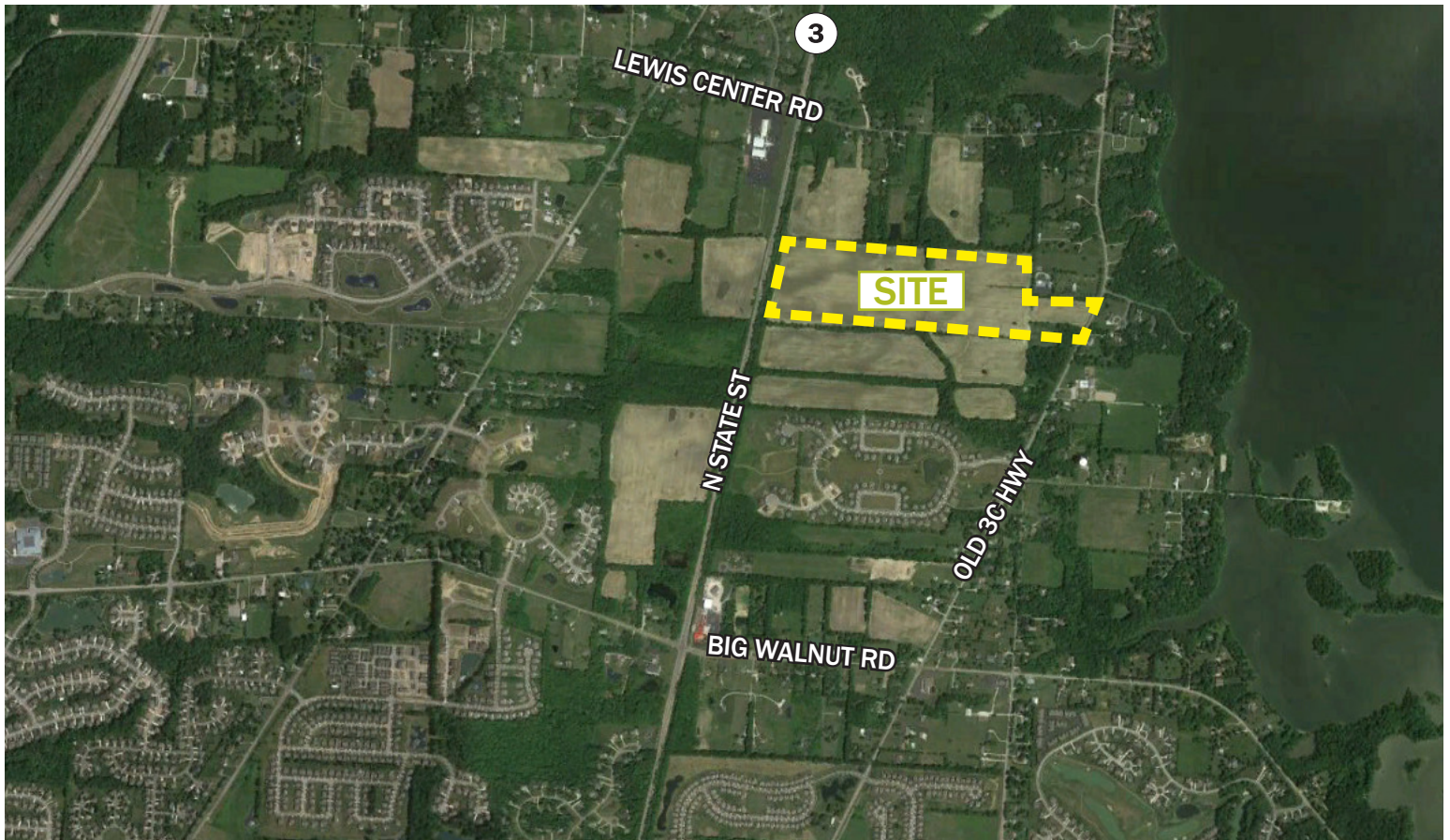


LAND AVAILABLE IN GENOA TOWNSHIP

+/- 75 Acres Available for Residential Development Between SR-3 and Old 3C Highway
SR-3/Old 3C Highway, north of Polaris Parkway | Delaware County, Ohio



PROPERTY HIGHLIGHTS

Proposed zoning PRD (Planned Residential District):
Planned for up to 2.2 DU/AC

25-acre minimum project size

1,000 ft. of frontage on SR-3; 625' frontage on
Old 3C Highway

Big Walnut schools

Homes in area: \$400,000 - \$500,000

Contiguous to sewer district expansion

Average Daily Traffic Count:
SR-3/State Street - 15,356
Polaris Parkway/SR 750 - 49,000

DEMOGRAPHICS

5-MILE
RADIUS

POPULATION (Estimated)	68,535
POPULATION (5 years)	73,747
HOUSEHOLDS	23,862
AVG. HOUSEHOLD INCOME	\$124,707
HOUSEHOLDS EARNING MORE THAN \$75K	67.8%
MEDIAN AGE	39
DAYTIME POPULATION	44,469
BUSINESSES	2,483
EXPENDITURE - RETAIL (Total)	\$883 M
Per Household per Month	\$3,084

SR3-OLD3C-land



Inspired ideas.
Integrated real estate solutions.

250 Civic Center Drive, Suite 500
Columbus, OH 43215 | www.castoinfo.com

FOR MORE INFORMATION

Justin Bird
614.744.2008 PHONE
614.229.4330 FAX
JBird@castoinfo.com

LAND AVAILABLE IN GENOA TOWNSHIP

+/- 75 Acres Available for Residential Development Between SR-3 and Old 3C Highway
SR-3/Old 3C Highway, north of Polaris Parkway | Delaware County, Ohio

