



14010 Airline Hwy.

Gonzales, Louisiana 70737

Property Highlights

- Hard corner on Airline and Hwy 621 in Prairieville
- +/-1.625 Acres
- Located in a high growth area near Rouses and Izzos
- High traffic and and large population

Sale Price

\$1,058,508 (\$15 psf)



For more information

Ty Gose, SIOR, CCIM

O: 225 295 0800 | C: 225 297 7808
ty@latterblum.com

Michael Cashio, CCIM

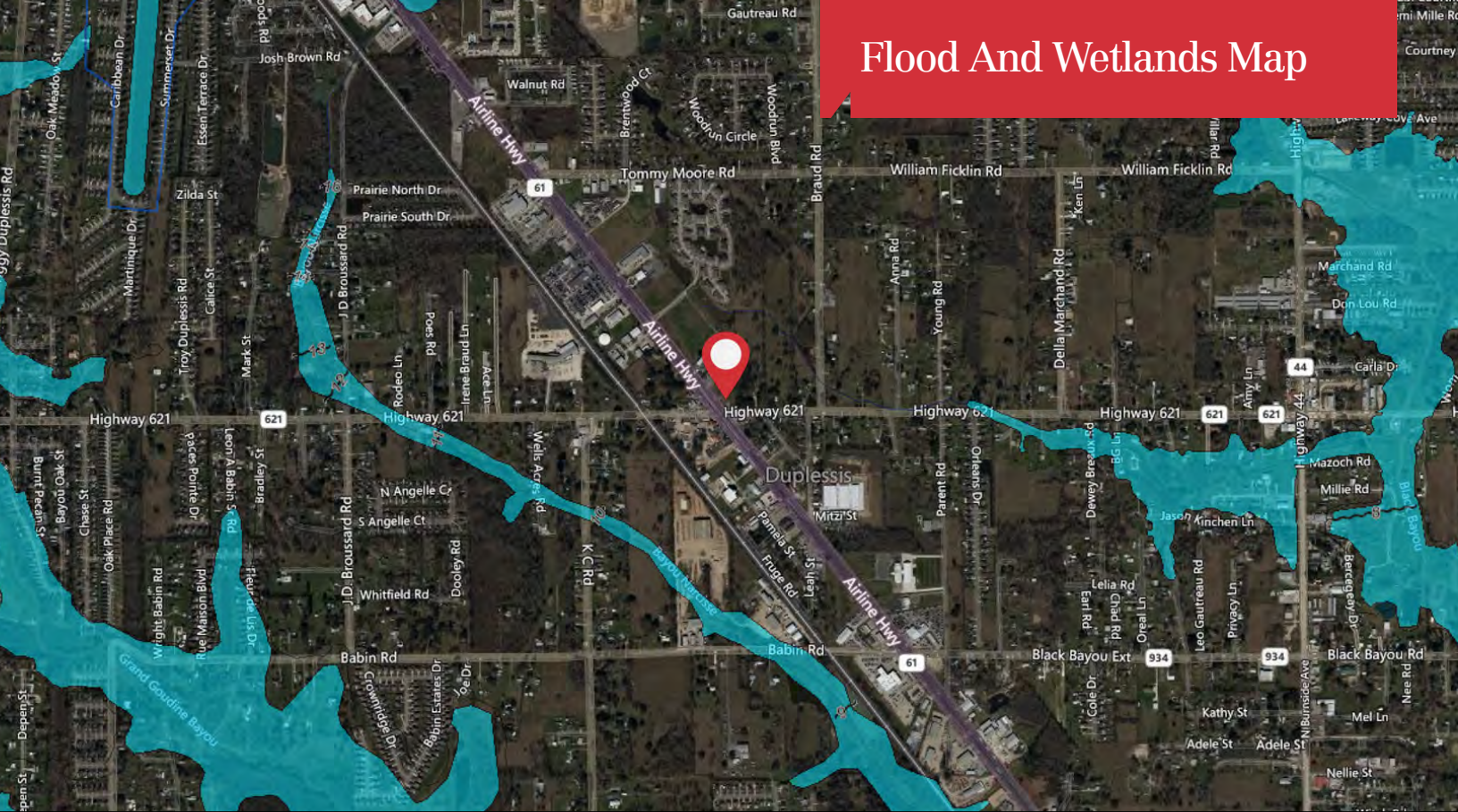
O: 225 295 0800 | C: 225 247 9812
mcashio@latterblum.com

CALL OR EMAIL FOR MORE INFORMATION

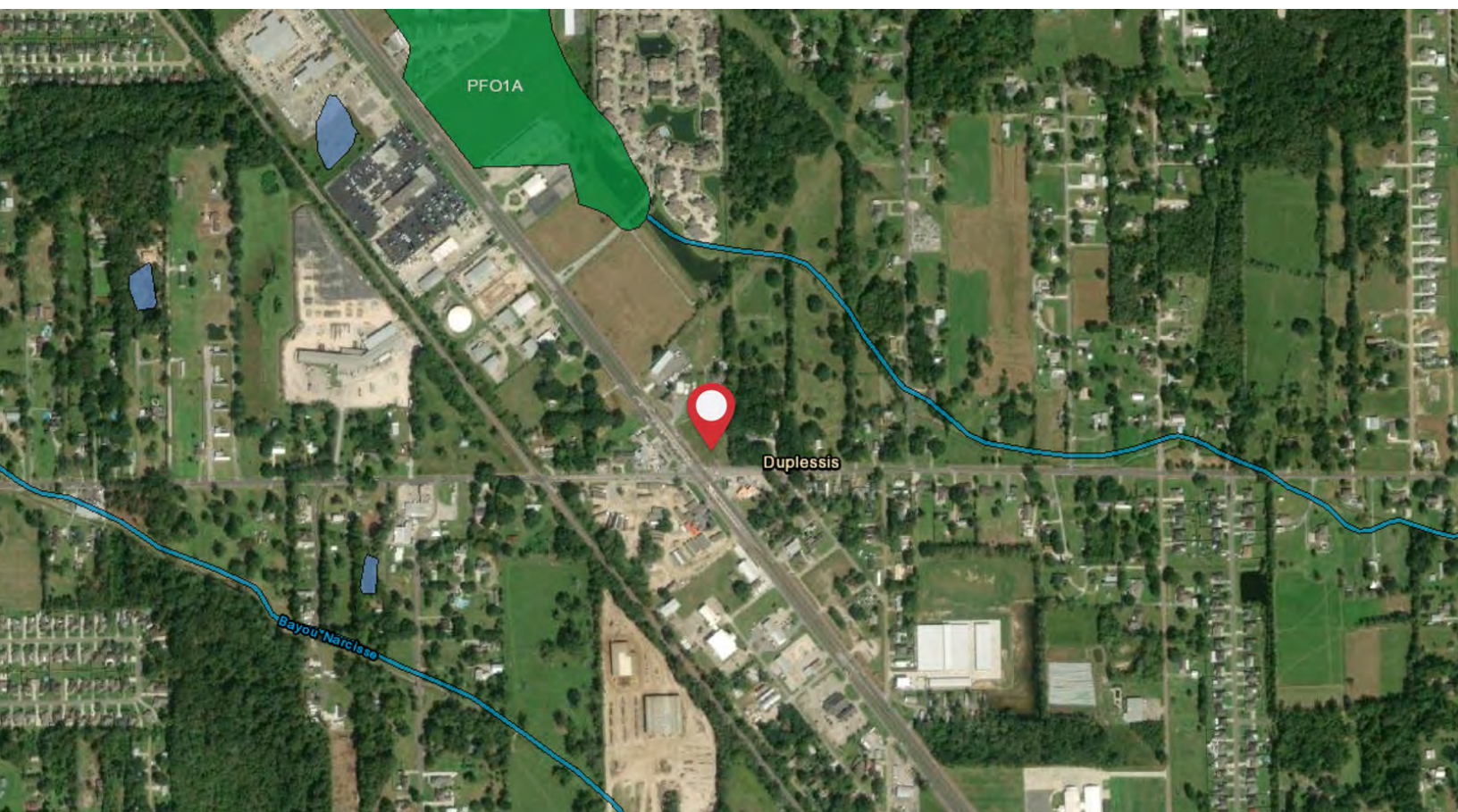
NO WARRANTY OR REPRESENTATION, EXPRESS OR IMPLIED, IS MADE AS TO THE ACCURACY OF THE INFORMATION CONTAINED HEREIN, AND THE SAME IS SUBMITTED SUBJECT TO ERRORS, OMISSIONS, CHANGE OF PRICE, RENTAL OR OTHER CONDITIONS, PRIOR SALE, LEASE OR FINANCING, OR WITHDRAWAL WITHOUT NOTICE, AND OF ANY SPECIAL LISTING CONDITIONS IMPOSED BY OUR PRINCIPALS NO WARRANTIES OR REPRESENTATIONS ARE MADE AS TO THE CONDITION OF THE PROPERTY OR ANY HAZARDS CONTAINED THEREIN ARE ANY TO BE IMPLIED. LICENSED IN LOUISIANA.

1700 City Farm Drive
Baton Rouge, LA 70806
225 295 0800 tel
latterblum.com

Flood And Wetlands Map



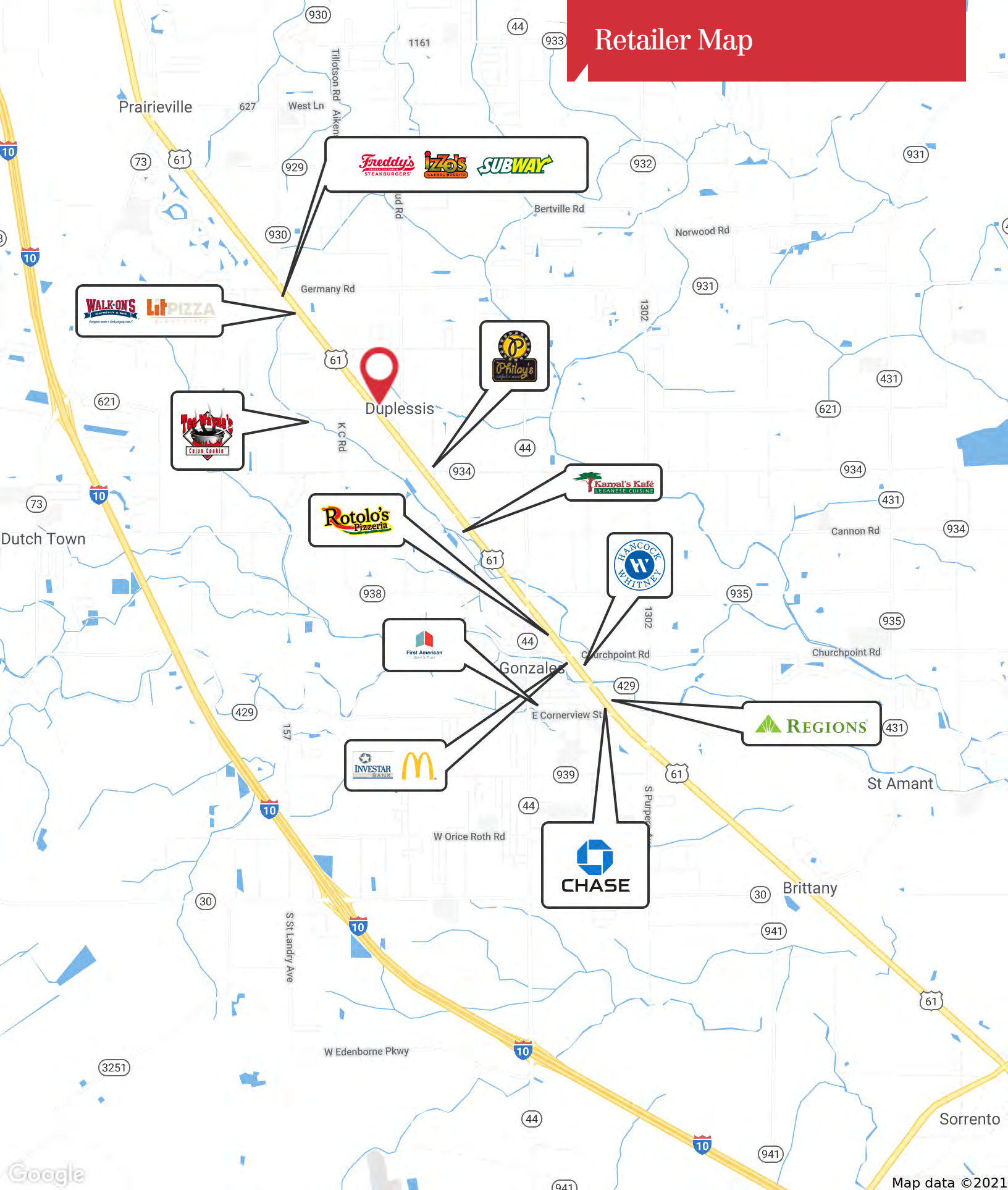
Flood Zone X



Not located in Wetlands

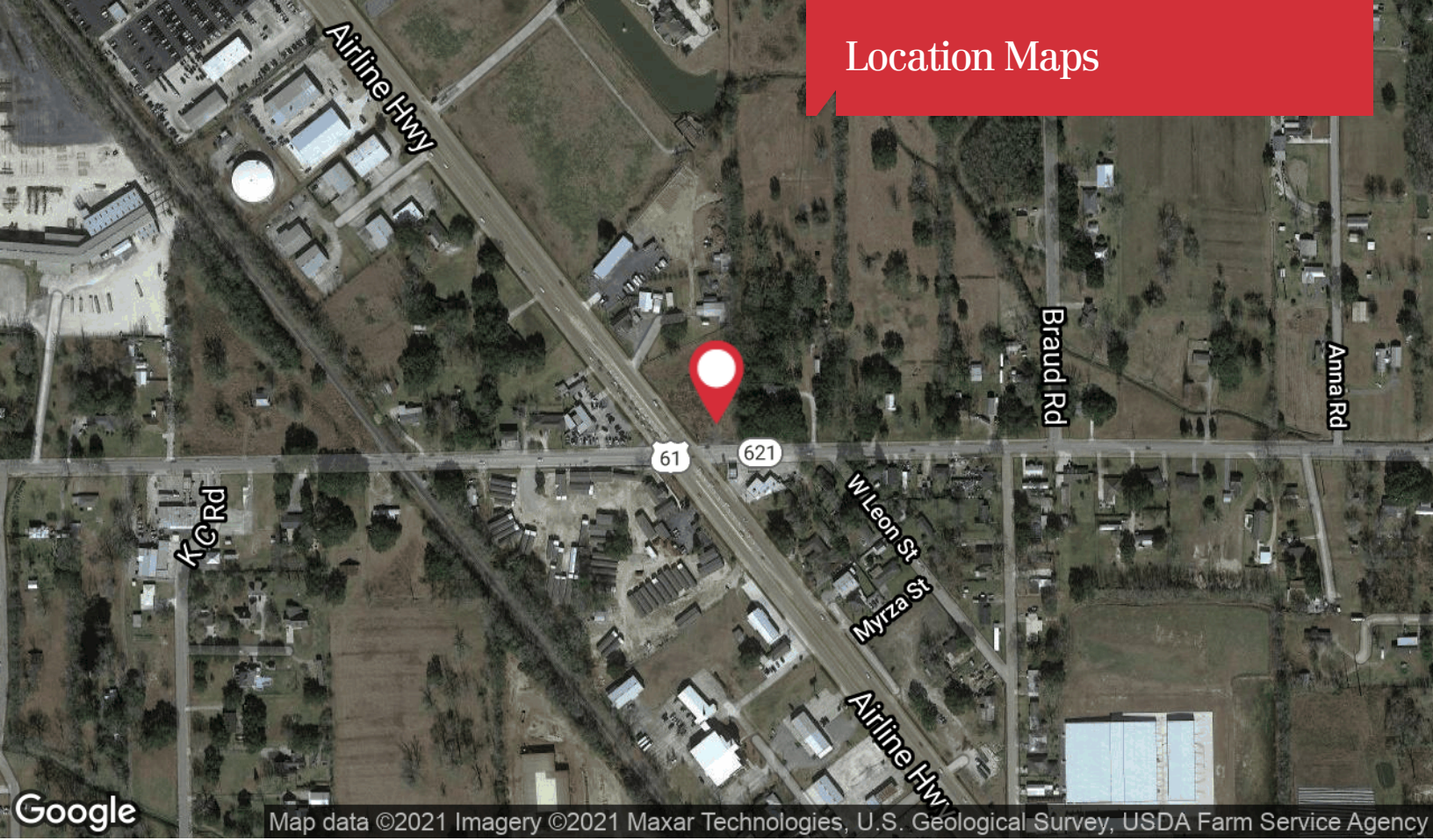
1700 City Farm Drive
Baton Rouge, LA 70806
225 295 0800 tel
latterblum.com

Retailer Map



1700 City Farm Drive
Baton Rouge, LA 70806
225 295 0800 tel
latterblum.com

Location Maps



Map data ©2021 Imagery ©2021 Maxar Technologies, U.S. Geological Survey, USDA Farm Service Agency



Gary Map data ©2021