

LA JOLLA



**1-2 ACRES AVAILABLE
CONSTRUCTION
MATERIALS YARD**

**OFFICE &
STORAGE YARD**

**FOR
LEASE**

**9229 HARRIS PLANT ROAD,
SAN DIEGO, CA 92145**

AVAILABLE SEPARATELY OR TOGETHER
±1-2 ACRES & 1,000 - 8,000 SF OFFICE

TIM GOSSELIN

Vice President

(760) 822-3730

tgosselin@lee-associates.com

CalBRE Lic#: 01495432



**1-2 ACRES
CONSTRUCTION
MATERIALS YARD**

**OFFICE &
STORAGE YARD**

Harris Plant Rd



**LEE &
ASSOCIATES**
COMMERCIAL REAL ESTATE SERVICES

TIM GOSSELIN
(760) 822-3730
tgosselin@lee-associates.com
CalBRE Lic#: 01495432

1900 Wright Place, Suite 200 Carlsbad, CA 92008 P: 760-929-9700 F: 760-929-9977 www.lee-associates.com

All information furnished regarding property for sale, rental or financing is from sources deemed reliable, but no warranty or representation is made to the accuracy thereof and same is submitted to errors, omissions, change of price, rental or other conditions prior to sale, lease or financing or withdrawal without notice. No liability of any kind is to be imposed on the broker herein.

PROPERTY OVERVIEW

**9229 HARRIS PLANT ROAD
SAN DIEGO, CALIFORNIA 92145**

AVAILABLE SEPARATELY OR TOGETHER
±1-2 ACRES & 1,000 - 8,000 SF OFFICE

AVAILABLE SITE:	LOT	OFFICE
YARD SIZE:	±1 - 2 Acres	±19,960 SF
BUILDING SIZE:	N/A	1,000 SF - 8,000 SF
PARKING:	In Yard	28 Parking Stalls
POWER:	Tenant's Expense	Yes
WATER:	Tenant's Expense	Yes
LEASE RATE:	\$0.26 psf storage	\$0.95 per square foot
LEASE TYPE:	Industrial Gross	Industrial Gross + Utilities

TIM GOSSELIN

(760) 822-3730

tgosselin@lee-associates.com

CalBRE Lic#: 01495432



**LEE &
ASSOCIATES**

COMMERCIAL REAL ESTATE SERVICES

1900 Wright Place, Suite 200 Carlsbad, CA 92008 P: 760-929-9700 F: 760-929-9977 www.lee-associates.com

All information furnished regarding property for sale, rental or financing is from sources deemed reliable, but no warranty or representation is made to the accuracy thereof and same is submitted to errors, omissions, change of price, rental or other conditions prior to sale, lease or financing or withdrawal without notice. No liability of any kind is to be imposed on the broker herein.

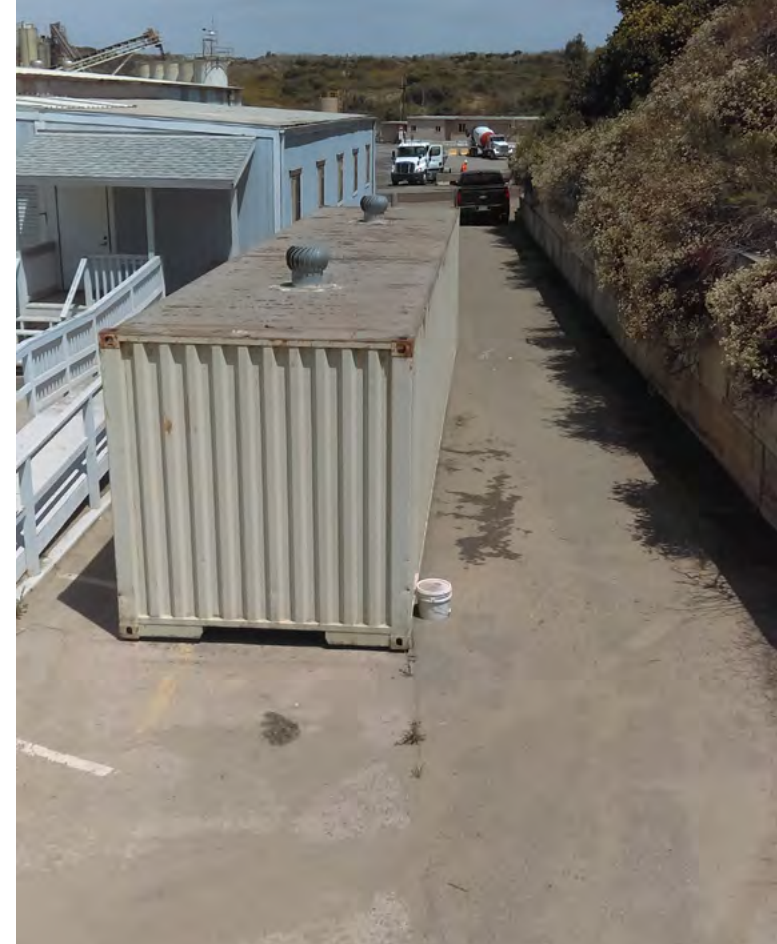
TIM GOSSELIN

(760) 822-3730
tgosselin@lee-associates.com
CalBRE Lic#: 01495432

PROPERTY PHOTOS

**9229 HARRIS PLANT ROAD
SAN DIEGO, CALIFORNIA 92145**

AVAILABLE SEPARATELY OR TOGETHER
±1-2 ACRES & 1,000 - 8,000 SF OFFICE



**LEE &
ASSOCIATES**
COMMERCIAL REAL ESTATE SERVICES

1900 Wright Place, Suite 200 Carlsbad, CA 92008 P: 760-929-9700 F: 760-929-9977 www.lee-associates.com

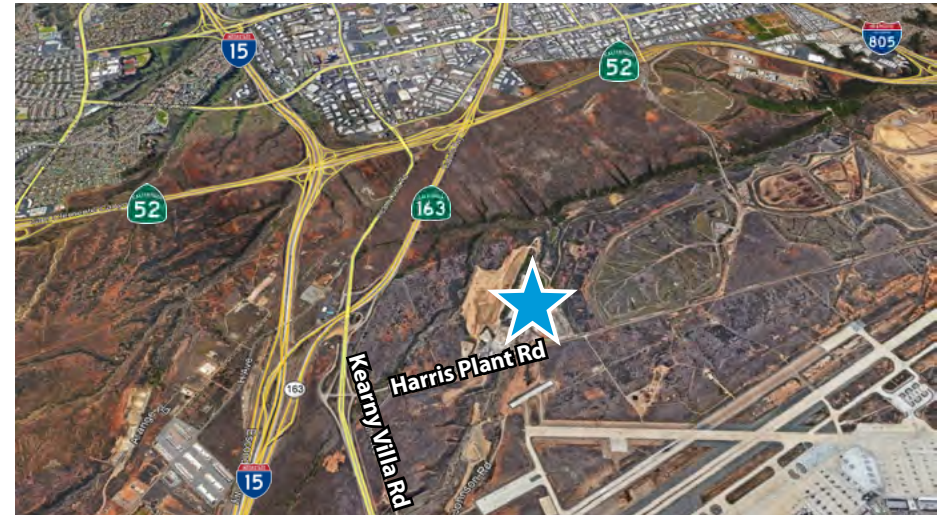
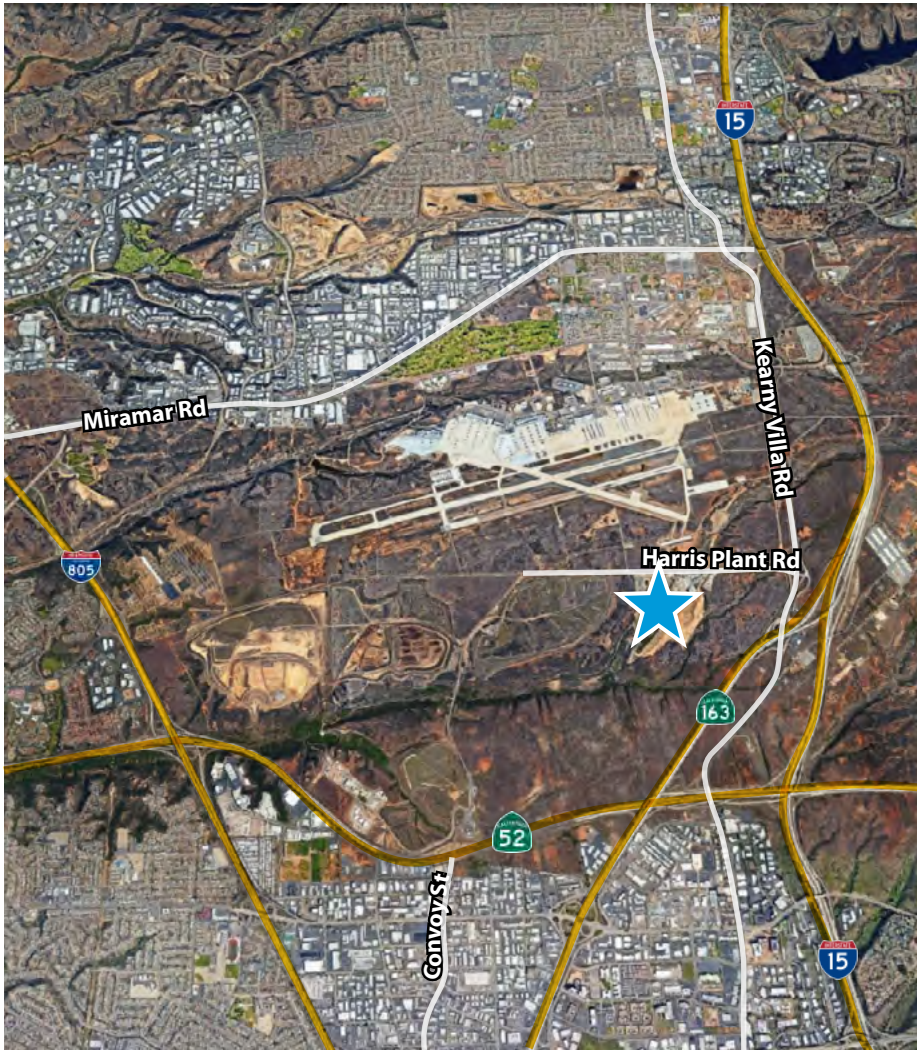
All information furnished regarding property for sale, rental or financing is from sources deemed reliable, but no warranty or representation is made to the accuracy thereof and same is submitted to errors, omissions, change of price, rental or other conditions prior to sale, lease or financing or withdrawal without notice. No liability of any kind is to be imposed on the broker herein.

TIM GOSSELIN
(760) 822-3730
tgosselin@lee-associates.com
CalBRE Lic#: 01495432

LOCATION OVERVIEW

**9229 HARRIS PLANT ROAD
SAN DIEGO, CALIFORNIA 92145**

AVAILABLE SEPARATELY OR TOGETHER
±1-2 ACRES & 1,000 - 8,000 SF OFFICE



**LEE &
ASSOCIATES**
COMMERCIAL REAL ESTATE SERVICES

TIM GOSSELIN
(760) 822-3730
tgosselin@lee-associates.com
CalBRE Lic#: 01495432

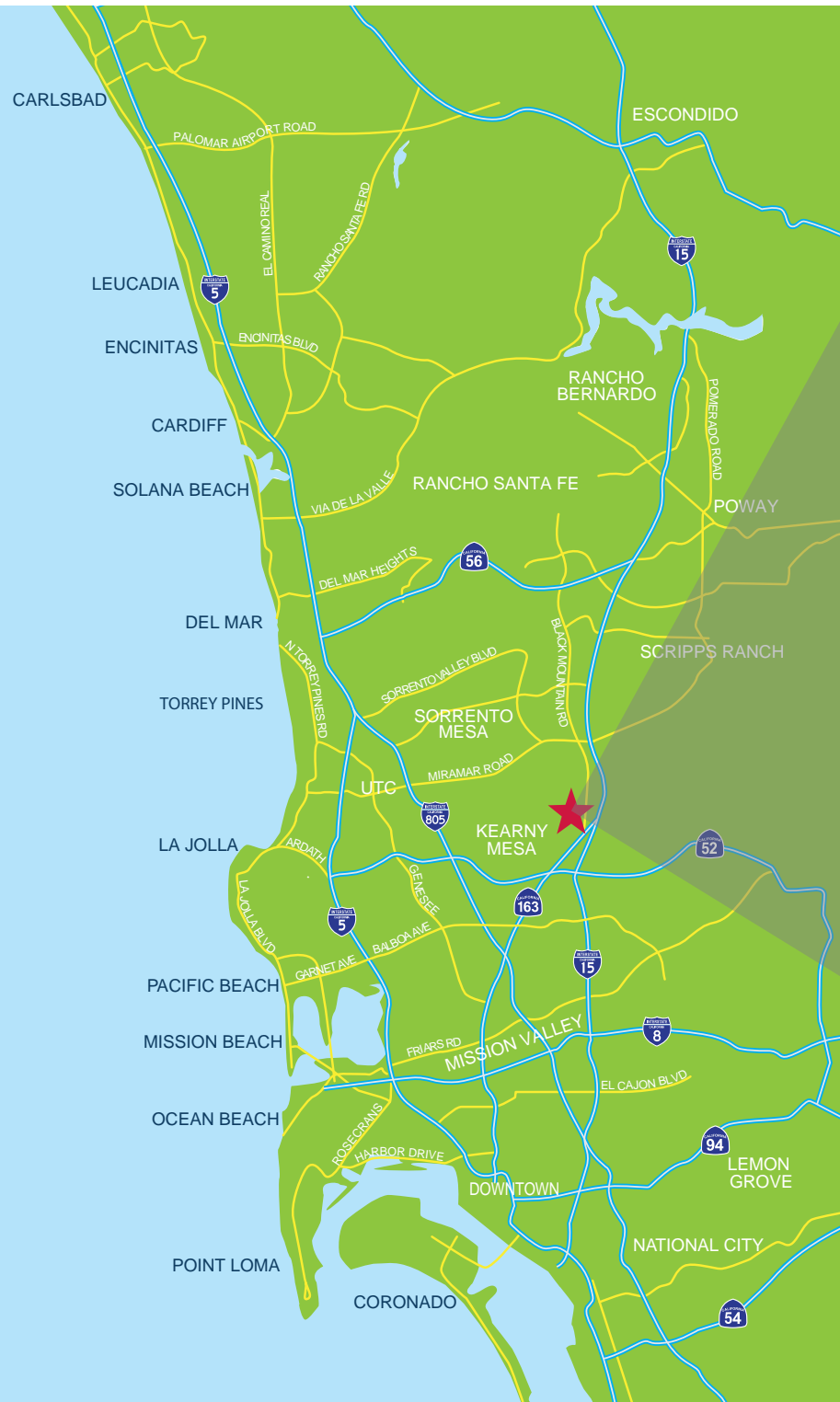
1900 Wright Place, Suite 200 Carlsbad, CA 92008 P: 760-929-9700 F: 760-929-9977 www.lee-associates.com

All information furnished regarding property for sale, rental or financing is from sources deemed reliable, but no warranty or representation is made to the accuracy thereof and same is submitted to errors, omissions, change of price, rental or other conditions prior to sale, lease or financing or withdrawal without notice. No liability of any kind is to be imposed on the broker herein.

AERIAL MAP

**9229 HARRIS PLANT ROAD
SAN DIEGO, CALIFORNIA 92145**

AVAILABLE SEPARATELY OR TOGETHER
±1-2 ACRES & 1,000 - 8,000 SF OFFICE



COMMERCIAL REAL ESTATE SERVICES

1900 Wright Place, Suite 200 Carlsbad, CA 92008
P: 760-929-9700 F: 760-929-9977 www.lee-associates.com

All information furnished regarding property for sale, rental or financing is from sources deemed reliable, but no warranty or representation is made to the accuracy thereof and same is submitted to errors, omissions, change of price, rental or other conditions prior to sale, lease or financing or withdrawal without notice. No liability of any kind is to be imposed on the broker herein.

TIM GOSSELIN

Vice President

(760) 822-3730

tgosselin@lee-associates.com

CalBRE Lic#: 01495432

PRIOR TO TOUR
the following link to be
printed and signed.

DOWNLOAD DOCUMENT

ALL PROPOSALS
to include the following
confidentiality agreement.

DOWNLOAD DOCUMENT

9229 HARRIS PLANT ROAD

SAN DIEGO, CALIFORNIA 92145

TIM GOSSELIN
Vice President
(760) 822-3730
tgosselin@lee-associates.com
CalBRE Lic#: 01495432

 **LEE &
ASSOCIATES**
COMMERCIAL REAL ESTATE SERVICES

1900 Wright Place, Suite 200 Carlsbad, CA 92008 P: 760-929-9700 F: 760-929-9977 www.lee-associates.com

All information furnished regarding property for sale, rental or financing is from sources deemed reliable, but no warranty or representation is made to the accuracy thereof and same is submitted to errors, omissions, change of price, rental or other conditions prior to sale, lease or financing or withdrawal without notice. No liability of any kind is to be imposed on the broker herein.