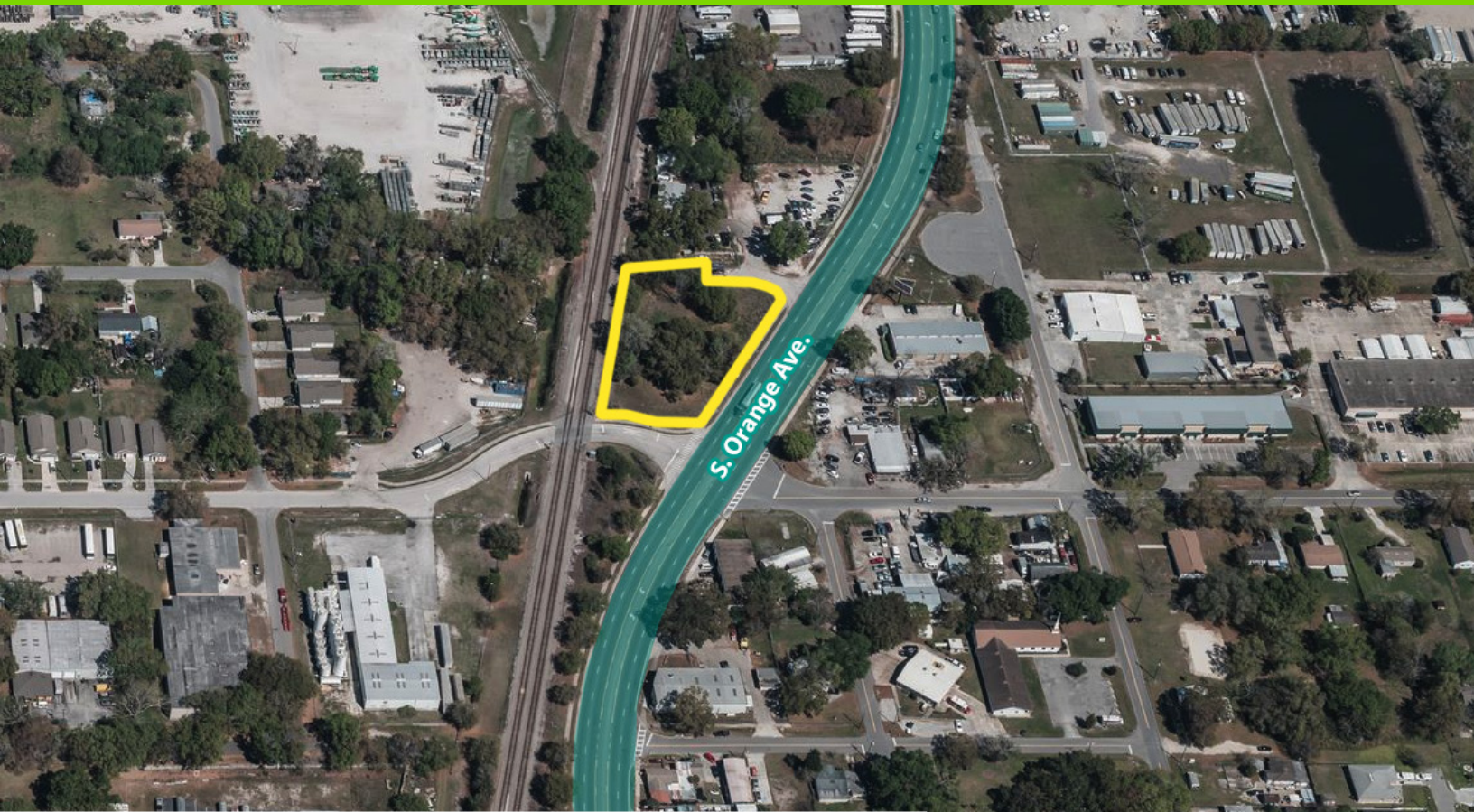


Vacant Land For Sale



Vacant Industrial Land

9208 1st Avenue | Orlando, FL 32824

- Two Industrial/Commercial Parcels, Ideal for Auto Repair, Service Station, or other Commercial Use
- .77 AC, Zoned I-3, I-4
- Traffic Count on S. Orange Ave. of 34,148 AADT
- 245' of Frontage on S. Orange Avenue

SAXON EVANS

T: 407-691-0505 ext. 322
M: 239-384-1432
sevans@holdthyssen.com

301 S. New York Avenue
Suite 200
Winter Park, FL 32789

www.holdthyssen.com



.77 Acres (33,541 SF)



Parcel Numbers:
01-24-29-0000-00-036
36-23-29-8228-40-711

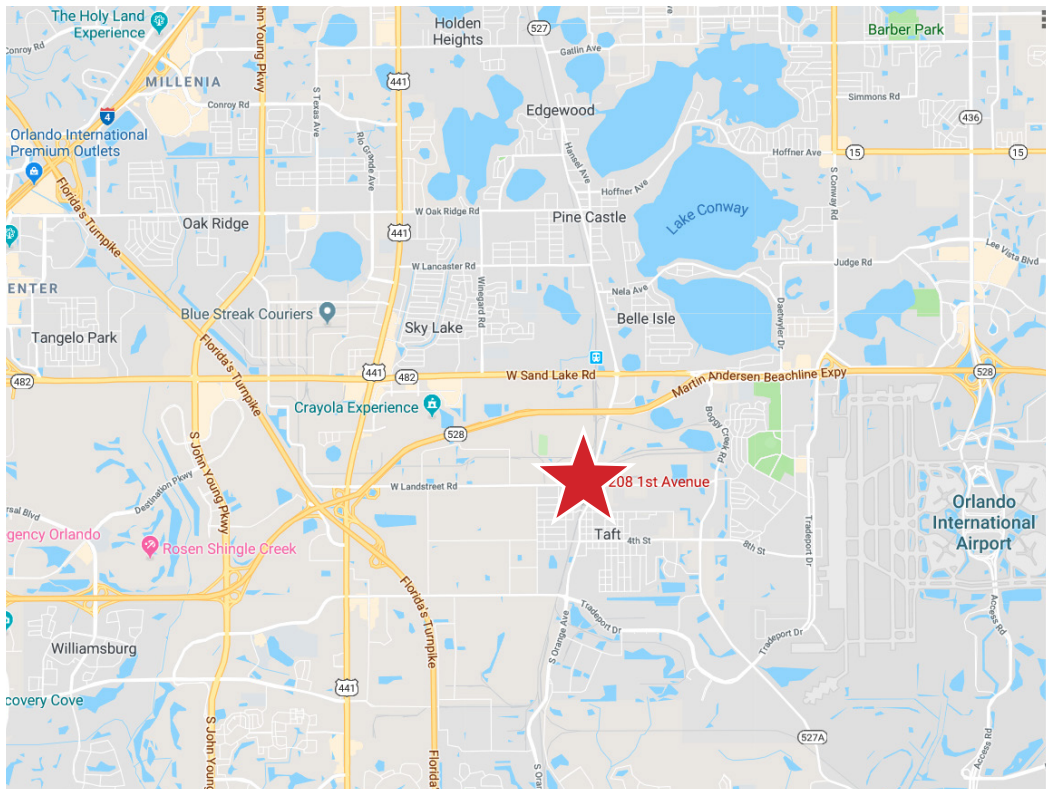
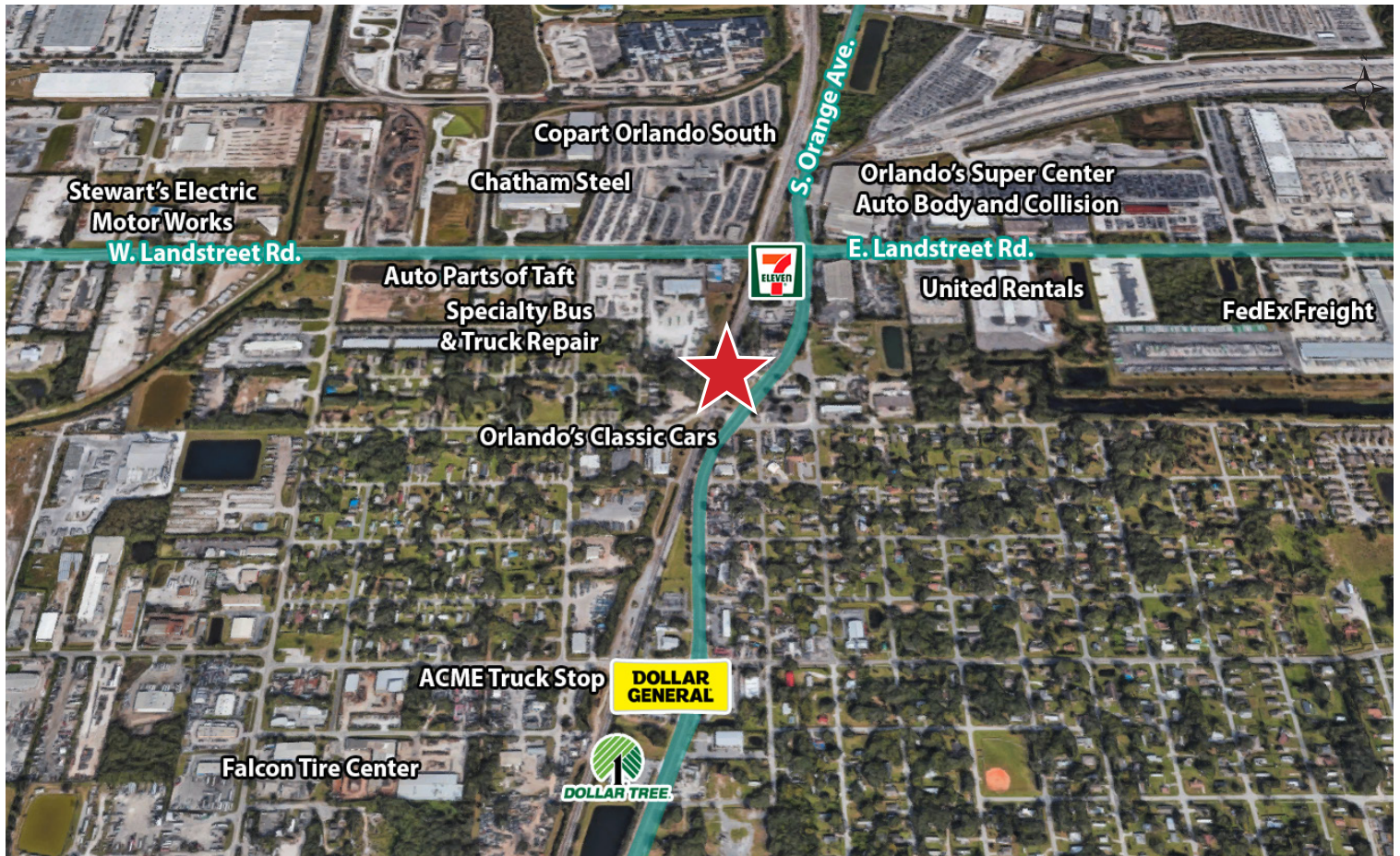


34,148 Vehicles/Day



Asking \$550,000

AERIAL



FOR MORE INFORMATION:

SAXON EVANS

sevans@holdthysen.com

T: 407-691-0505 x322

M: 239-384-1432

301 S. New York Avenue

Suite 200

Winter Park, FL 32789



The information above has been obtained from sources believed reliable. While we do not doubt its accuracy we make no guarantee, warranty or representation about it. It is your responsibility to independently confirm its accuracy and completeness. Any projections, opinions, assumptions, or estimates used are for example only and do not represent the current or future performance of the property. Hold-Thysen, Inc. is a licensed real estate broker.