

Available Medical Office Space for Lease

Del E. Webb Medical Plaza

10001 South Eastern Avenue, Henderson, NV 89052

For Leasing Information:

Leslie Price

Director, Leasing

Phone: 858-794-1900

lprice@pmbres.com

www.pmbres.com

CA Lic. 02131283

Trey Trask

Senior Director of Leasing

Phone: 858-794-1900

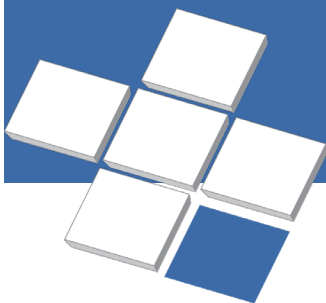
ttrask@pmbres.com

www.pmbres.com

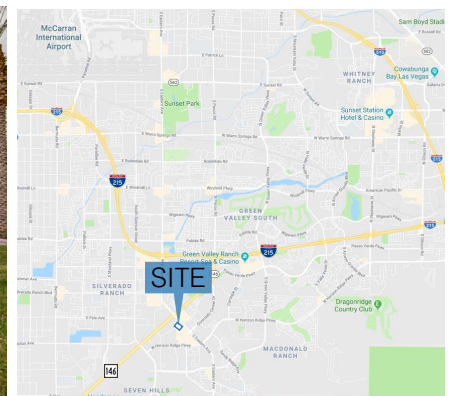
CA Lic. 01304141



- Connected to the Siena campus of St. Rose Dominican Hospital
- Direct hospital access from each floor of the Medical Office Building
- Home to Comprehensive Cancer Center of Nevada's Henderson Office and many primary care and specialty practices
- Newly completed parking structure offers reserved covered physician parking



PMB
Real Estate Services
Real Estate Management Solutions for Healthcare

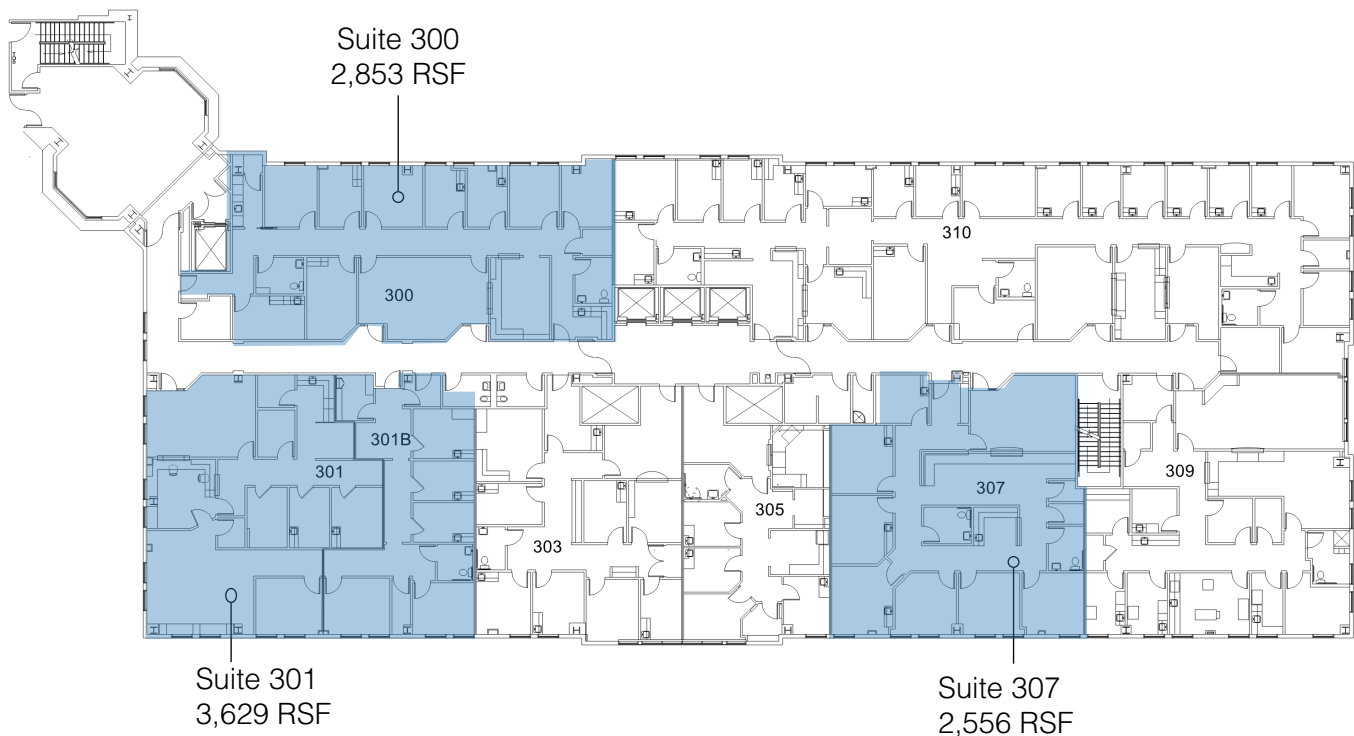


Availabilities

2nd Floor Availabilities



3rd Floor Availabilities



For Leasing Information:

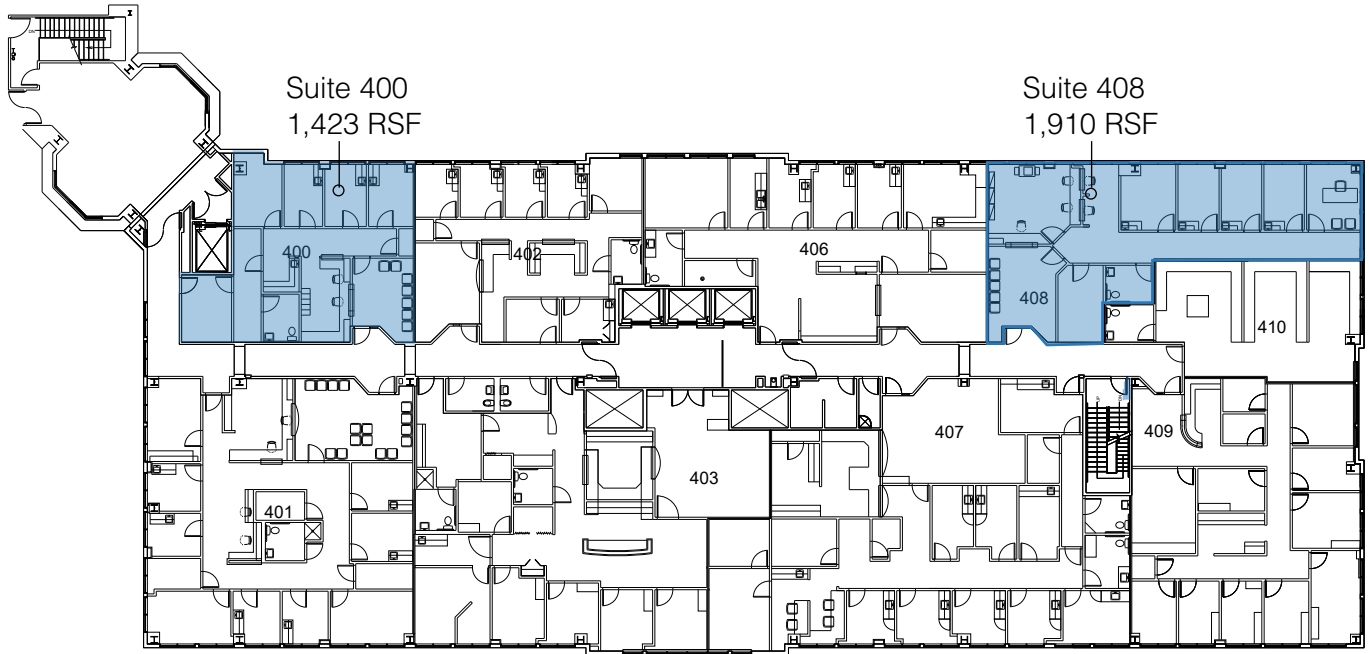
Leslie Price | Director, Leasing
Phone: 858-794-1900 | lprice@pmbres.com
www.pmbres.com | CA Lic. 02131283



PMB Real Estate Services

Availabilities

4th Floor Availabilities



For Leasing Information:

Leslie Price | Director, Leasing
Phone: 858-794-1900 | lprice@pmbres.com
www.pmbres.com | CA Lic. 02131283



PMB Real Estate Services