

# For Lease

## **ESCONDIDO MEDICAL/ DENTAL BUILDING**



**LOCATION:** 910 E OHIO (AT DATE & OHIO)

**AVAILABLE:**

**First Floor:** Suite 101 B 1,420 SF  
Suite 103 2,500 SF  
Suite 104 1,700 SF

**Second Floor: Elevator Served**

Suite 200 700 SF  
Suite 204 A 1,250 SF

**LEASE RATE:** \$1.55 PSF – INCLUDES UTILITIES

**FEATURES:** Medical build-out  
Attractive complex, corner lot, monument signage  
Ample parking lot

This information is compiled from data which we believe to be correct but no liability is assumed by this company as to accuracy of such data. V16

**For More Information:**

**CDC Commercial** 11440 West Bernardo Court #300 San Diego, CA 92127

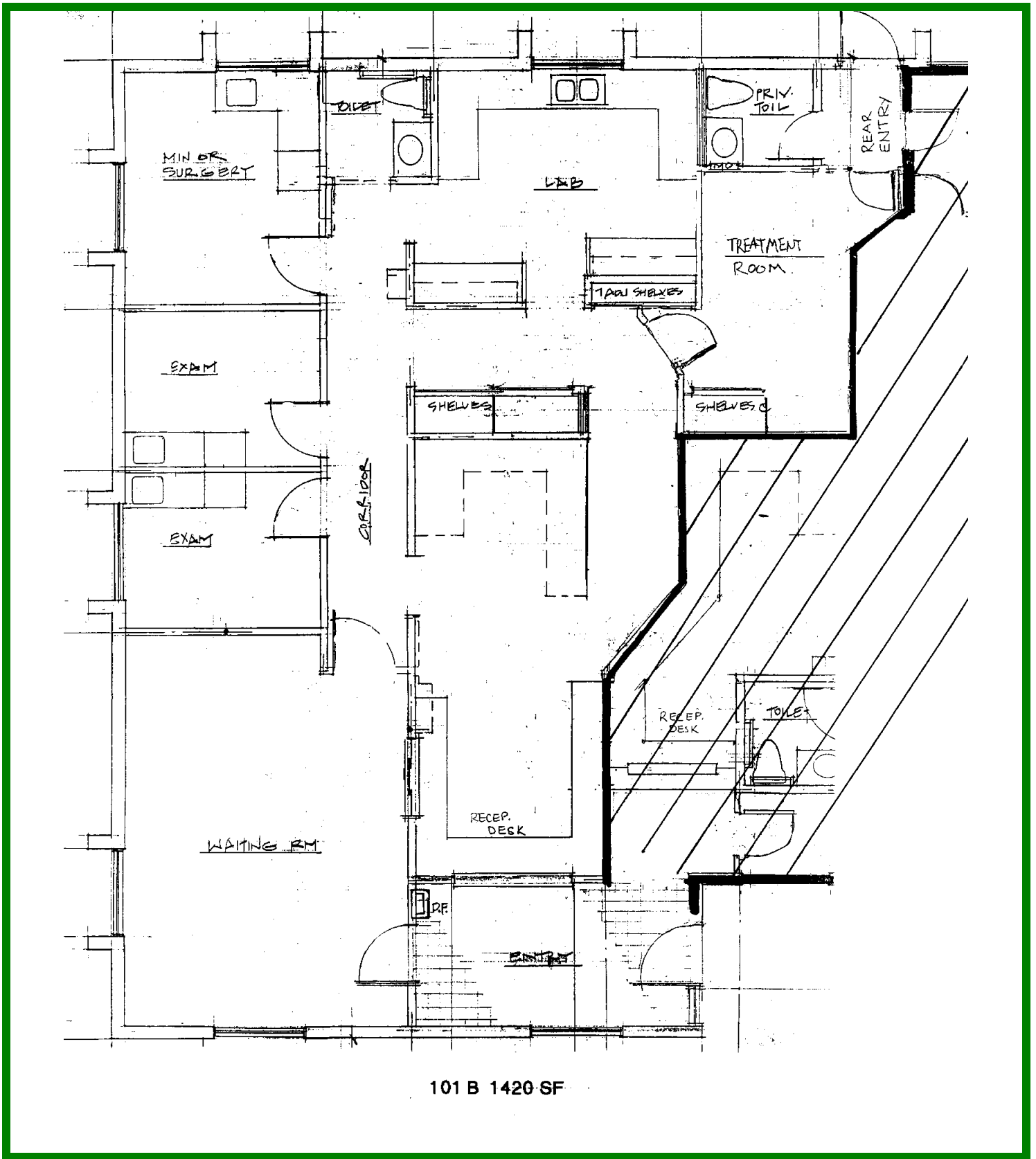
**Matt Orth** 858.736.1337/Lic 01884500/morth@cdccommercial.com

**Nick Zech** 858.232.2100/Lic 01721457/nzech@cdccommercial.com



License #01857155

# For Lease

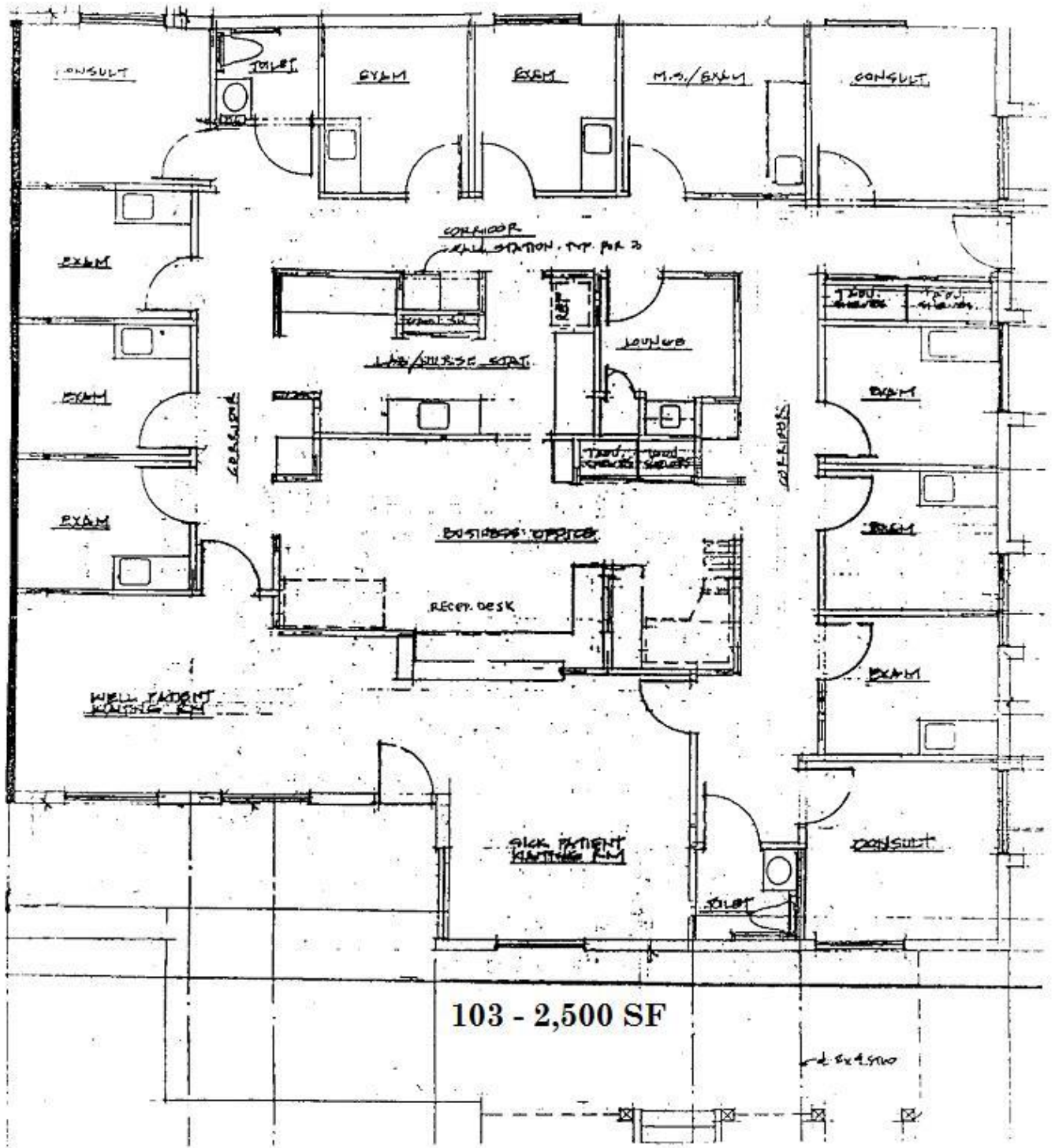


This information is compiled from data which we believe to be correct but no liability is assumed by this company as to accuracy of such data. V16  
**For More Information:**  
CDC Commercial 11440 West Bernardo Court #300 San Diego, CA 92127  
Matt Orth 858.736.1337/Lic 01884500/morth@cdccommercial.com  
Nick Zech 858.232.2100/Lic 01721457/nzech@cdccommercial.com



License #01857155

# For Lease



This information is compiled from data which we believe to be correct but no liability is assumed by this company as to accuracy of such data. V16  
**For More Information:**  
CDC Commercial 11440 West Bernardo Court #300 San Diego, CA 92127  
Matt Orth 858.736.1337/Lic 01884500/morth@cdccommercial.com  
Nick Zech 858.232.2100/Lic 01721457/nzech@cdccommercial.com



License #01857155