

Full Floor Showroom, Office, Or Retail Opportunity
With Private Street-Level Entrance

SINVIN
COMMERCIAL REAL ESTATE & ADVISORY

RENDERING OF POSSIBLE NEW INSTALLATION



BETWEEN PRINCE & WEST HOUSTON

Ground Floor (Private Entrance).....**25 SF**
Second Floor.....**2,000 RSF**
Frontage.....**5' (Ground Floor), 25' (Second Floor)**

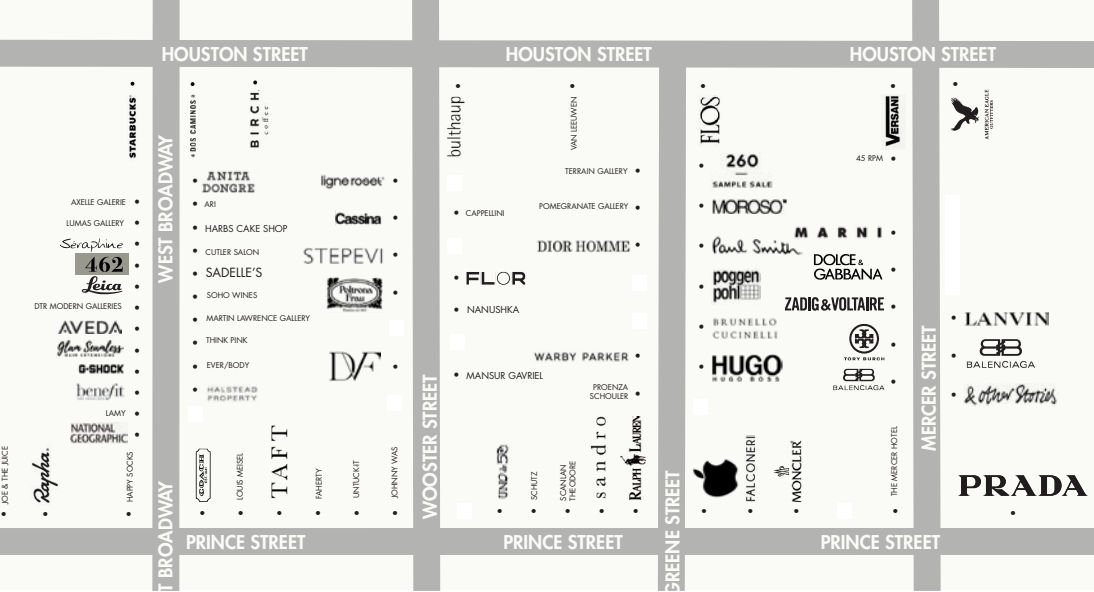
Term.....**Long Term**
Possession.....**Immediate**
Asking Rent.....**Please Inquire**



462

WEST BROADWAY

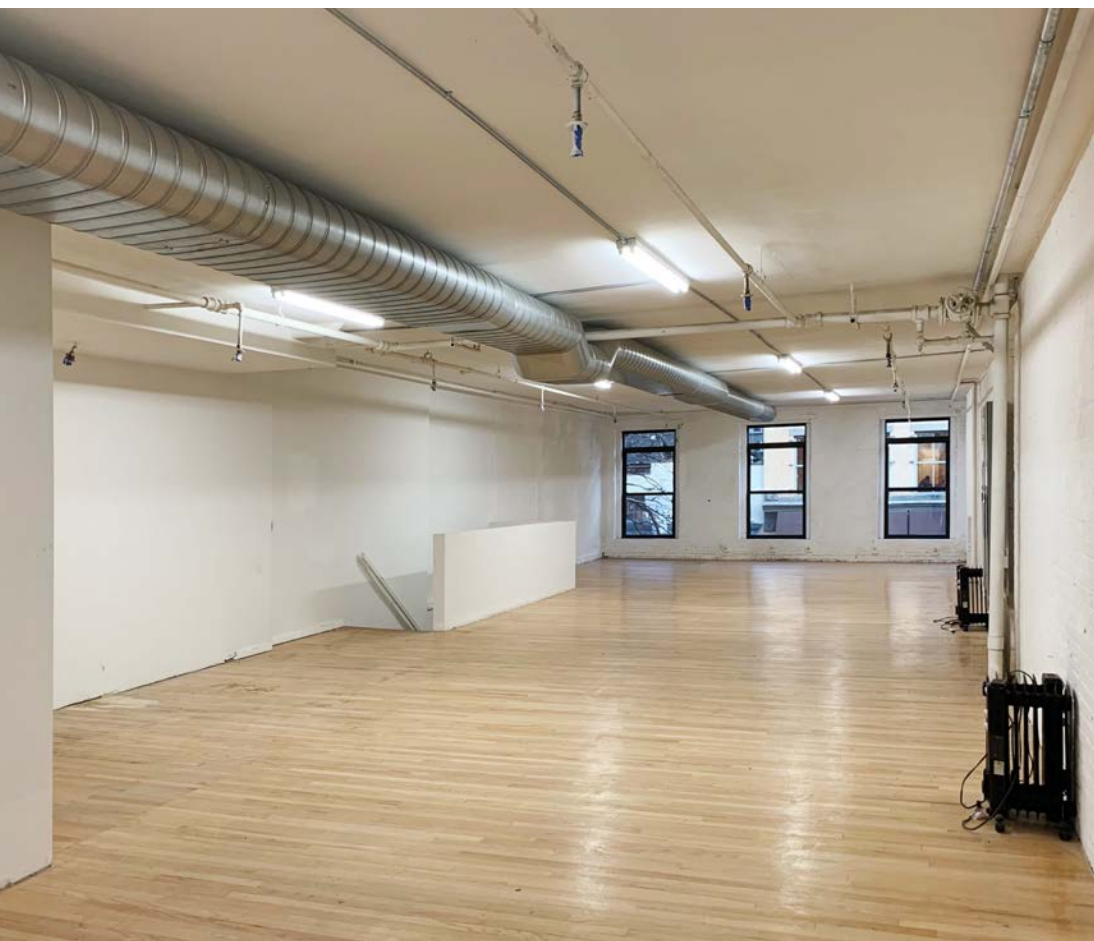




- SPACE FEATURES:**
- Second floor is accessible by dedicated stairs. An elevator is available for occasional use
 - Branded awning and oversized signage flag
 - Six windows facing east and west
 - Space is vacant and in whitebox condition
 - Brand new windows and HVAC
 - 600 amps of electricity



- NEIGHBORS INCLUDE:**
- Leica Gallery
 - G-Shock
 - Benefit Cosmetics
 - Seraphine
 - Coach
 - Chobani
 - Joe & The Juice
 - Starbucks
 - Sadelles
 - Dos Caminos
 - Lumas Gallery



PLEASE CONTACT:

Christopher Owles
212.604.9002
chris@sinvin.com

Sarah Shannon
646.673.8780
sarah@sinvin.com