

# 1400 5TH AVENUE

BETWEEN WEST 115TH & WEST 116TH STREETS | HARLEM



# 1400 5TH AVENUE

BETWEEN WEST 115TH & WEST 116TH STREETS | HARLEM

## SIZE

Ground Floor **630 SF**

## FRONTAGE

25'

## CEILING HEIGHT

10'

## ASKING RENT

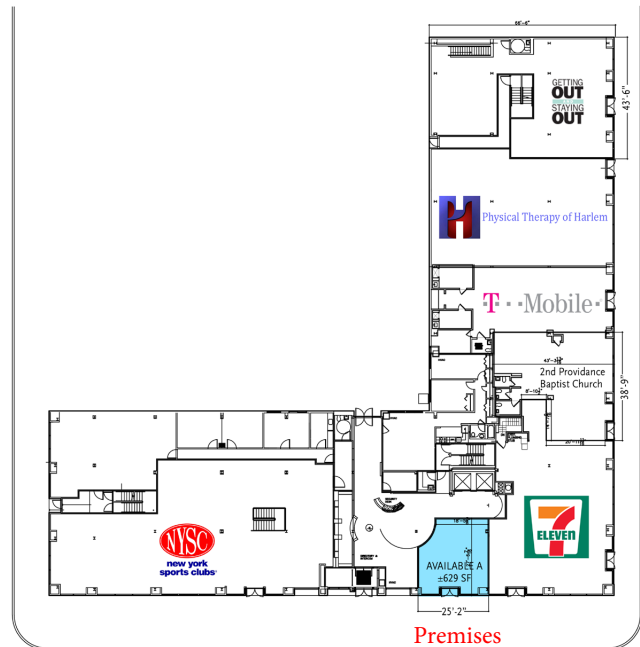
Upon Request

## POSSESSION

Immediate

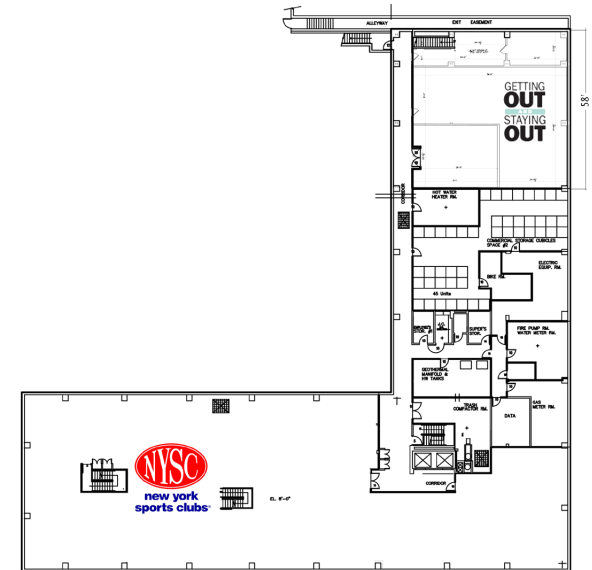
## COMMENTS

- Next door to NYSC and 7 Eleven
- White Box Condition
- Across Street from dense residential area
- M1 Bus Stop Sits Directly in front of the space



FIFTH AVENUE

GROUND LEVEL



LOWER LEVEL



**KASSIN SABBAGH REALTY**  
1385 Broadway 22nd floor  
New York, NY 10018  
(212) 417 - 9217  
www.ksrny.com

CONTACT OUR BROKER(S) FOR MORE INFORMATION

**STEVEN VEGH**

SVegh@ksrny.com

**516.524.6845**

**SHOLOM KANEVSKY**

SKanevsky@ksrny.com

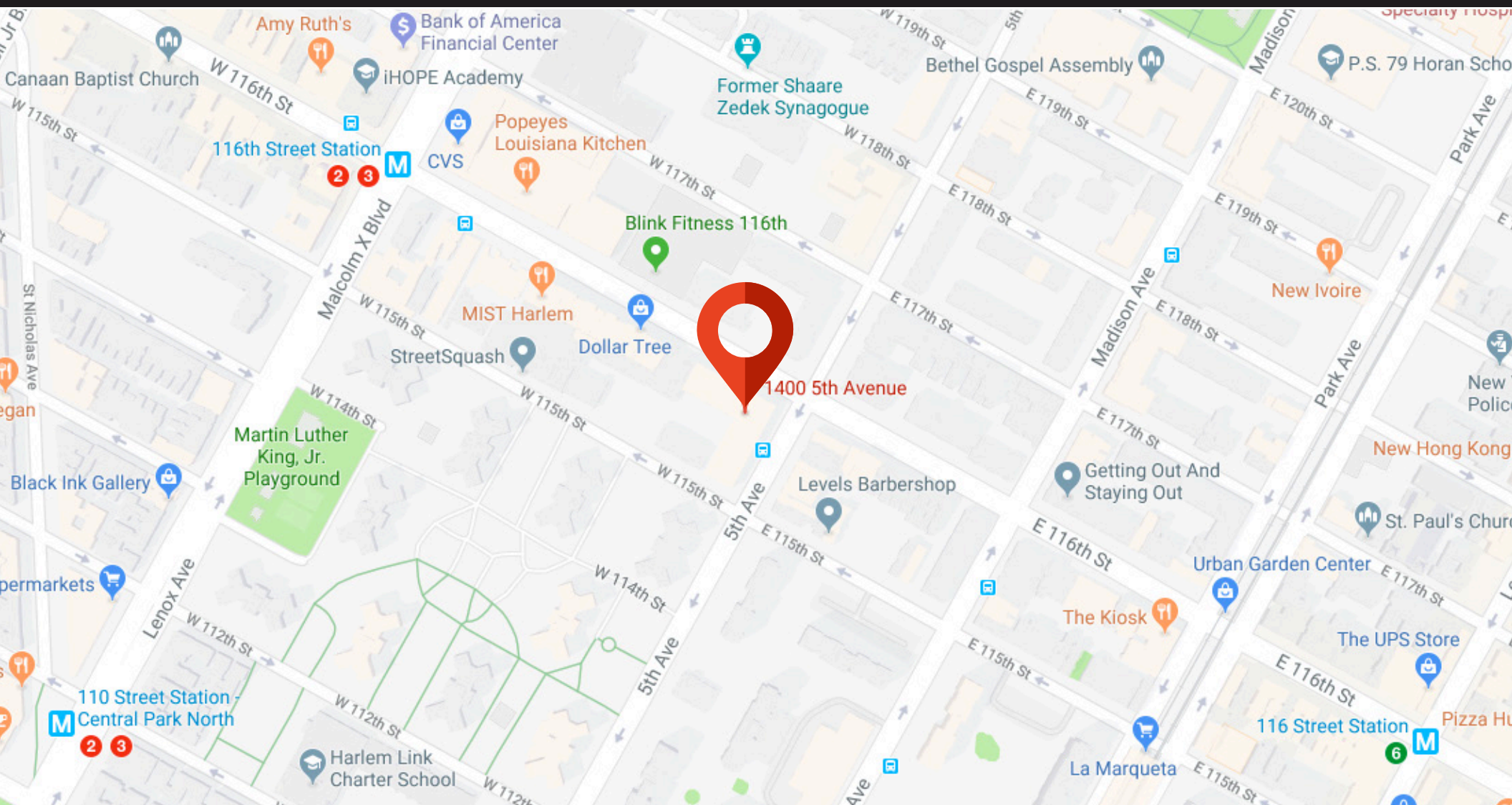
**917.982.3201**

All information supplied in this marketing presentation and/or flyer is from sources deemed reliable and is furnished subject to errors, omissions, modifications, removal of listings from sale/lease and to any listing conditions. Any square footage, dimensions, floor plans and/or technical data set forth are approximations and are subject to further elaboration/confirmation.



# 1400 5TH AVENUE

BETWEEN WEST 115TH & WEST 116TH STREETS | HARLEM



CONTACT OUR BROKER(S) FOR MORE INFORMATION

**STEVEN VEGH**

[SVegh@ksrny.com](mailto:SVegh@ksrny.com)

**516.524.6845**

**SHOLOM KANEVSKY**

[SKanevsky@ksrny.com](mailto:SKanevsky@ksrny.com)

**917.982.3201**



**KASSIN SABBAGH REALTY**

1385 Broadway 22nd floor  
New York, NY 10018  
(212) 417 - 9217  
[www.ksrny.com](http://www.ksrny.com)