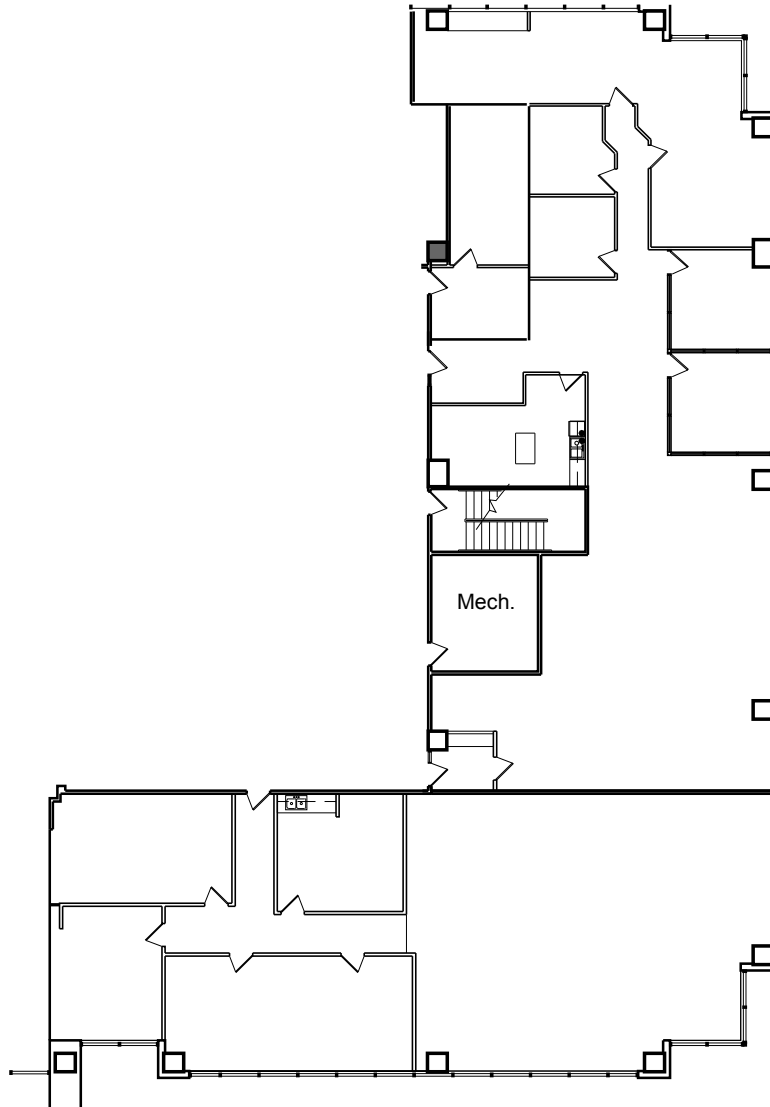


Park Springs Place

Suite 220

Floor 2
8,395 Sq Ft

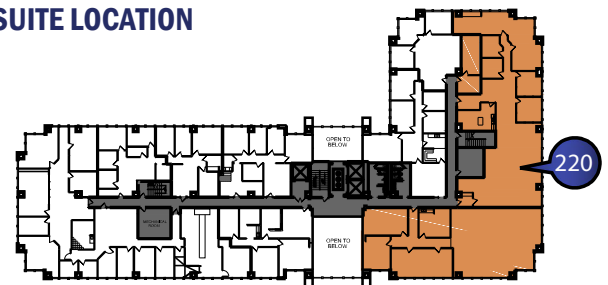


SUITE & BUILDING FEATURES

This suite features a generous amount of open space, suitable for modular workstation use. It also includes a break room, two windowed offices, and 2 interior rooms, to use as offices, storage, copy rooms or conference room.

Located near Green Oaks Blvd. at Spur 303, Pioneer Parkway, close proximity to restaurants and retail shopping

SUITE LOCATION



This information has been obtained from sources believed reliable. We have not verified it and make no guarantee, warranty or representation about it. Any projections, opinions, assumptions or estimates used are for example only and do not represent the current or future performance of the property. You and your advisors should conduct a careful, independent investigation of the property to determine your satisfaction with the suitability of the property for your needs. All square footages are approximate and subject to change.



2828 Routh Street, Suite 700
Dallas, Texas 75201
Kurt Cherry: 972.421.3322
kurt.cherry@madisonmarquette.com