

Truck Service or Contractor Building with Outside Yard



Muncie Industrial District

- 6,650 SF building on ±2 acres - fenced
- 6 Overhead Doors (each 12' x 14') 4 on Front and 2 on back-area (4 bays - 2 are drive-thru)
- Ample Customer/Office Parking
- Completely Fenced Lot Surrounding Building
- 2nd Floor Above Office Space/Apartment Inside

For more information:

Michael R. Block, CPM
816.932.5549
mblock@blockllc.com

Keiten J. Nuspl
816.932.5531
knuspl@blockllc.com

Andrew T. Fain
816.412.8449
afain@blockllc.com

The information contained in this marketing flyer is presented as general information only. Block Real Estate Services, LLC makes no representation as to its accuracy. This information is not intended as legal, financial or real estate advice and must not be relied upon as such. You should make your own inquiries, obtain independent inspections, and seek professional advice tailored to your specific circumstances before making any legal, financial or real estate decisions.

Building Specifications

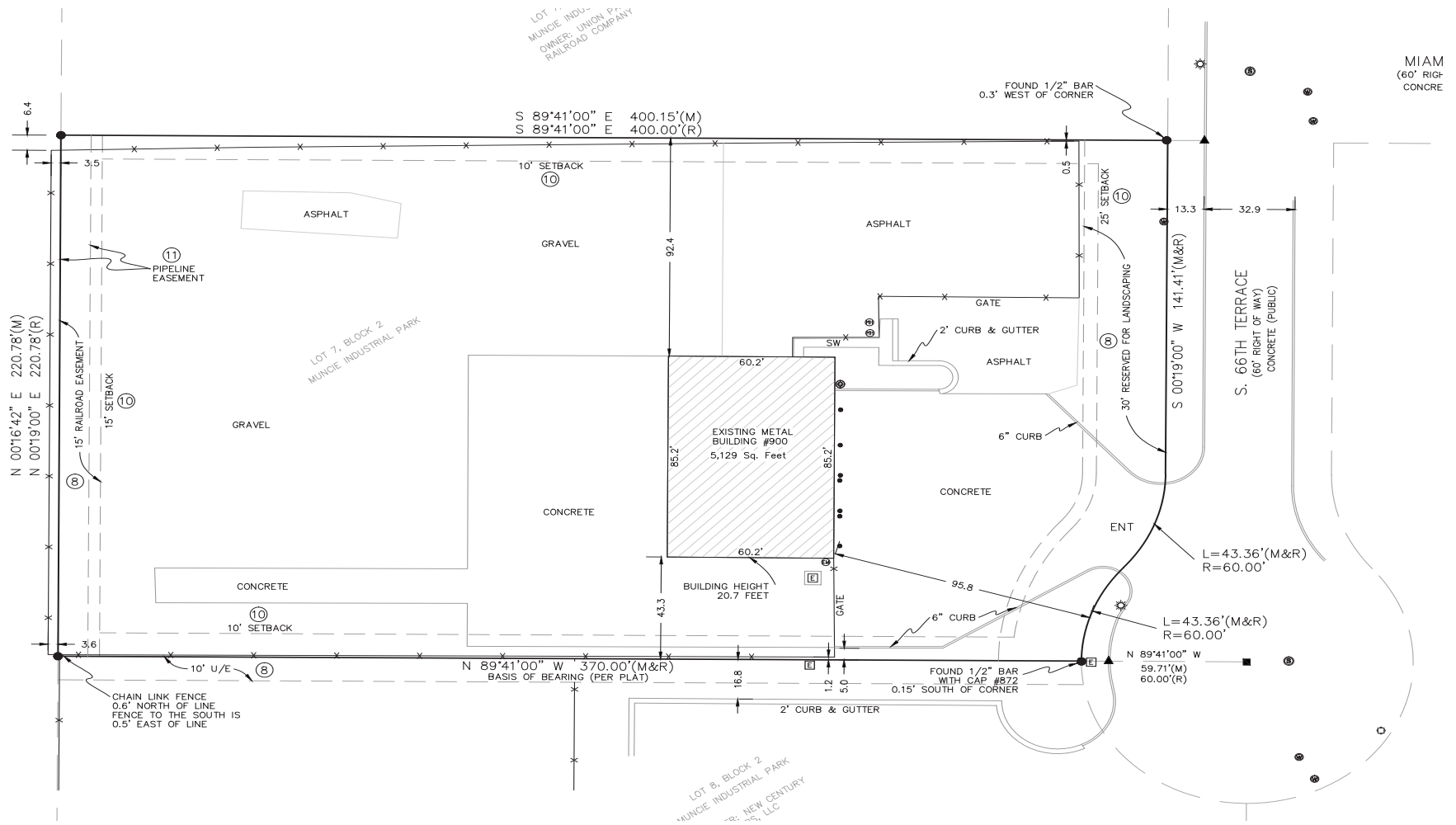
Property Address:	900 S. 66th Terrace, Kansas City, Wyandotte County, Kansas 66111 (Muncie Industrial Park)
Building Size:	5,400 SF on main level plus 1,450 SF on 2nd level for a total of 6,850 SF
Office Area:	1,150 sf on main level plus office/apartment on second level of 1,450 SF
Land Size:	86,232 SF (1.9 Acres)
Layout:	2nd Floor Above Offices, 2 Lower Level Bathrooms, Shower/Break Area, Windows on Both Levels
Drive-In Doors:	4 on the front side and 2 on the rear side creating 2 drive-thru bays with each door 12' wide by 14' tall
RBA:	6,650 SF
Office Space:	1,150 SF
Structure:	Brick Fascia on Front of Building, Opaque Fiberglass Panels in Steel Deck, 6" Floor Thickness
Ceiling Height:	16'-18'
Floor Thickness:	6"
Lighting Type:	Exterior Lighting and Fluorescent Lighting Throughout Shop Space
Fencing:	Fenced Lot Around Building and Behind
Power:	400 amps of 208/220 volt three-phase; transformer on site
Year Built:	1992
Parking:	Ample Customer/Office Parking With Separate Office Entrance
Zoning:	M-3
Surrounding Area:	Ground Directly North of Property is Vacant, Undeveloped Land
Real Estate Taxes:	\$13,252 (2018)

900 South 66th Terrace

Kansas City, Kansas 66111

For Sale

Site Survey

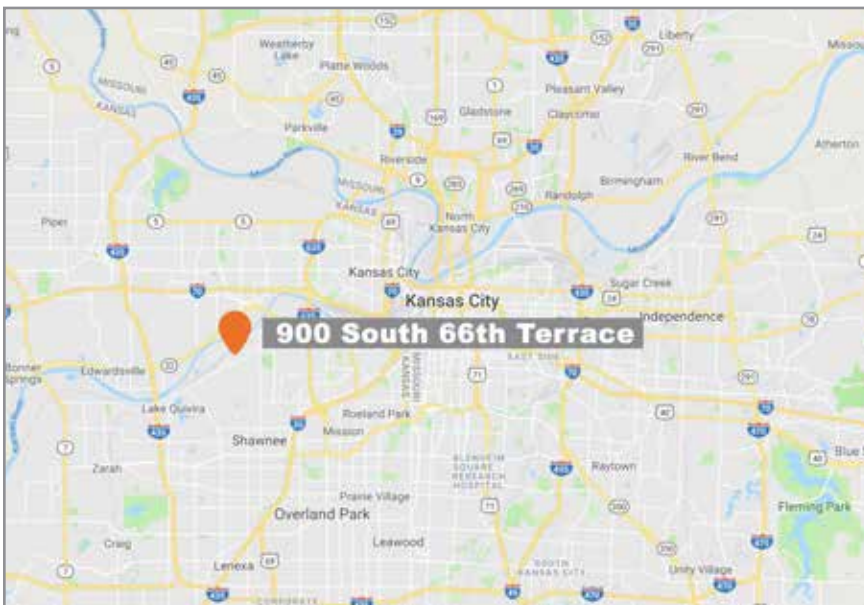


700 W. 47th Street, Suite 200
Kansas City, MO 64112
816.756.1400 | www.BLOCKLLC.com

900 South 66th Terrace

Kansas City, Kansas 66111

For Sale



For more information:

Michael R. Block, CPM
816.932.5549
mblock@blockllc.com

Keiten J. Nuspl
816.932.5531
knuspl@blockllc.com

Andrew T. Fain
816.412.8449
afain@blockllc.com