

# Six@Park

105 East 6th Street

Parkville, MO 64152

Under Construction with Fall 2019 Delivery Date



# W

W A T E R F O R D

PROPERTY COMPANY, LLC

# 6@Park

## Features



- Office or retail space available.
- No E-Tax.
- Amenities include a Rooftop Terrace, Fitness Facility and Conference / Training Rooms.
- 2,000 square feet to 24,000 square feet available.
- \$24.50 to \$28.50 full service.
- Up the hill from Downtown Parkville—USA Today named Parkville the “Most Charming Main Street” in the State of Missouri.
- Only in Your State named Parkville “the coolest space in the Midwest.”
- Free parking.
- Excellent restaurants and coffee shops.
- Less than 10 minutes from Downtown Kansas City.



WATERFORD  
PROPERTY COMPANY LLC

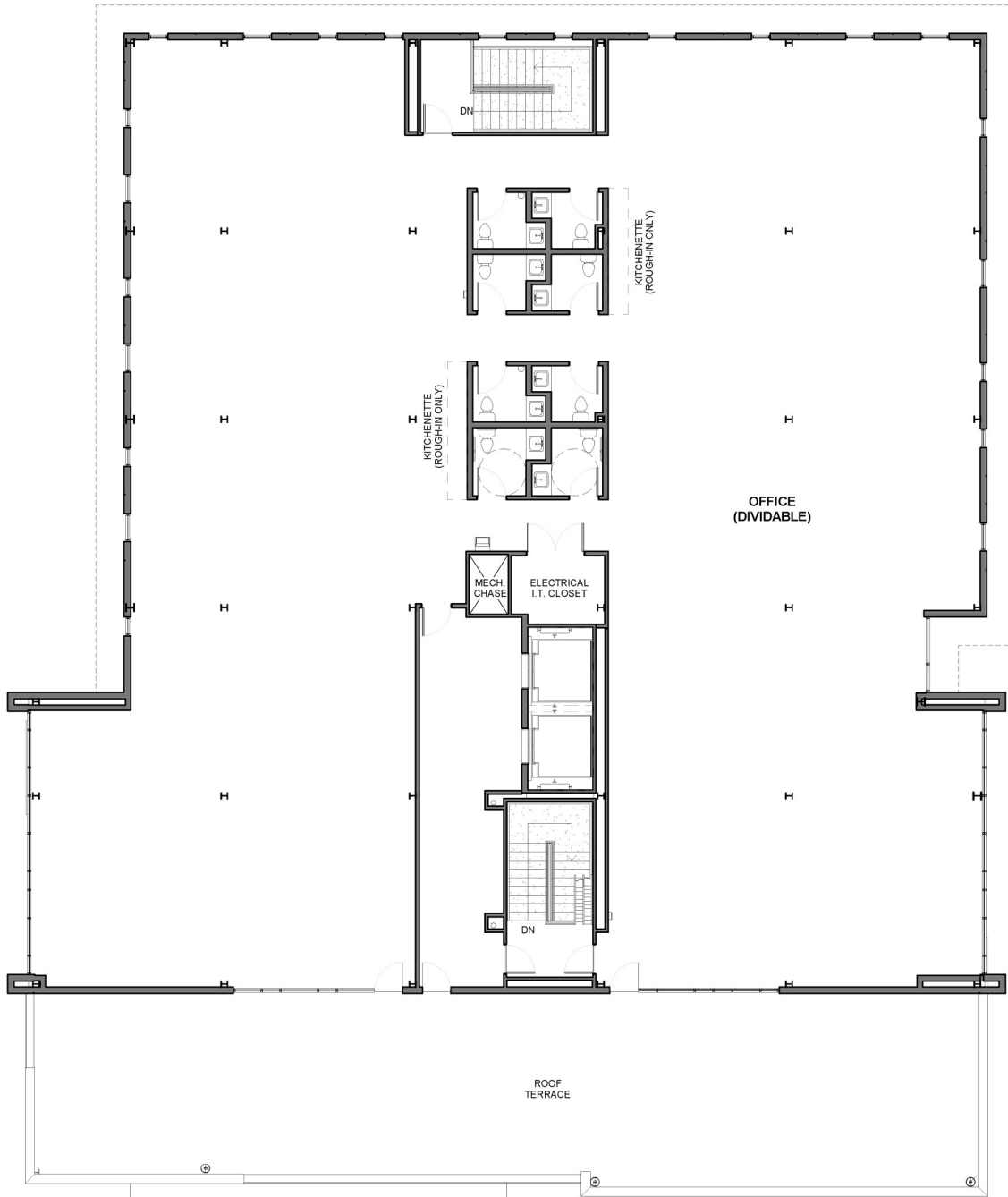
Chuck Connealy, SIOR, CCIM

Direct: (913) 789-9020

Cell: (913) 515-6616

[chuck.connealy@waterfordproperty.net](mailto:chuck.connealy@waterfordproperty.net)

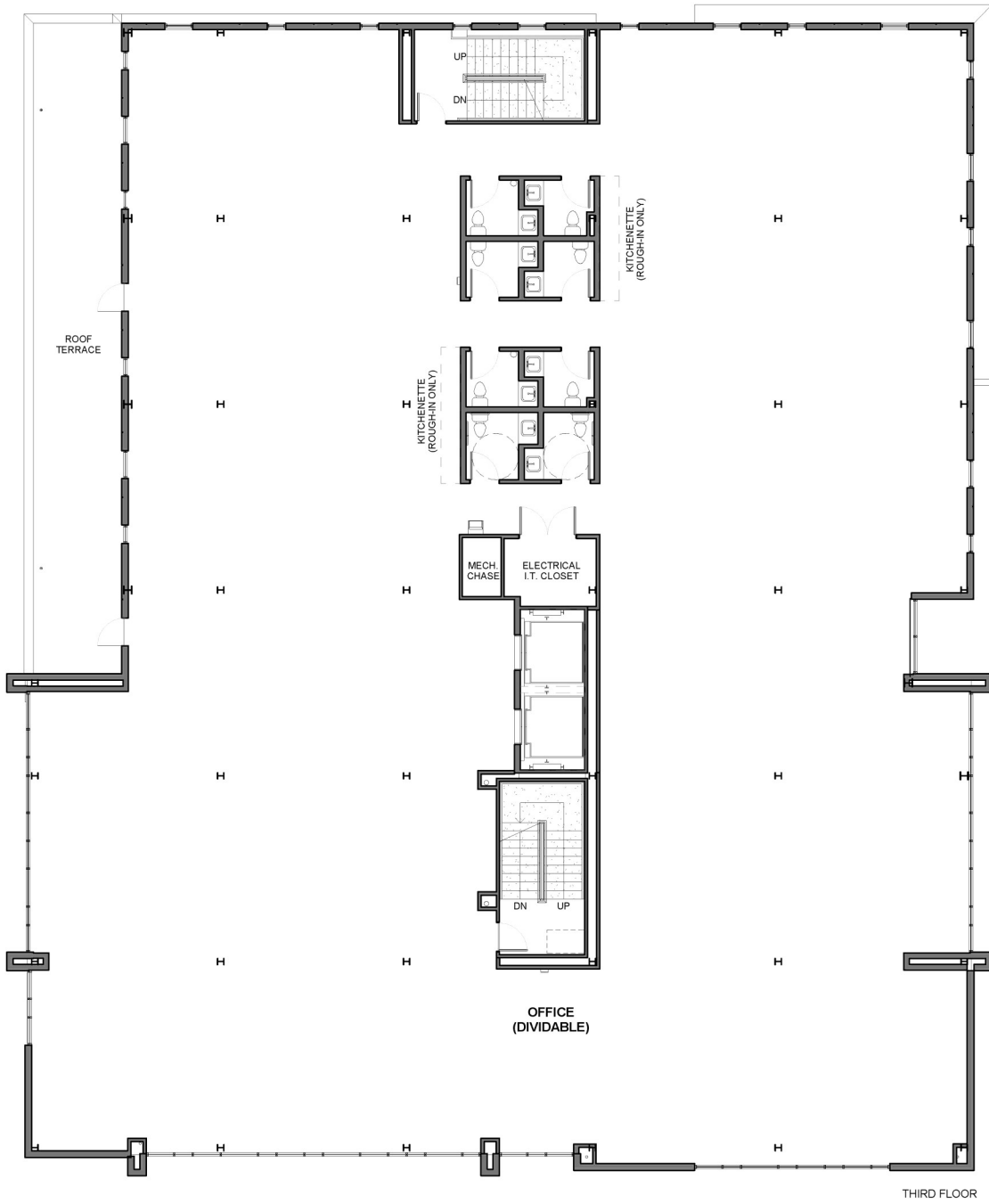
### 4th Floor



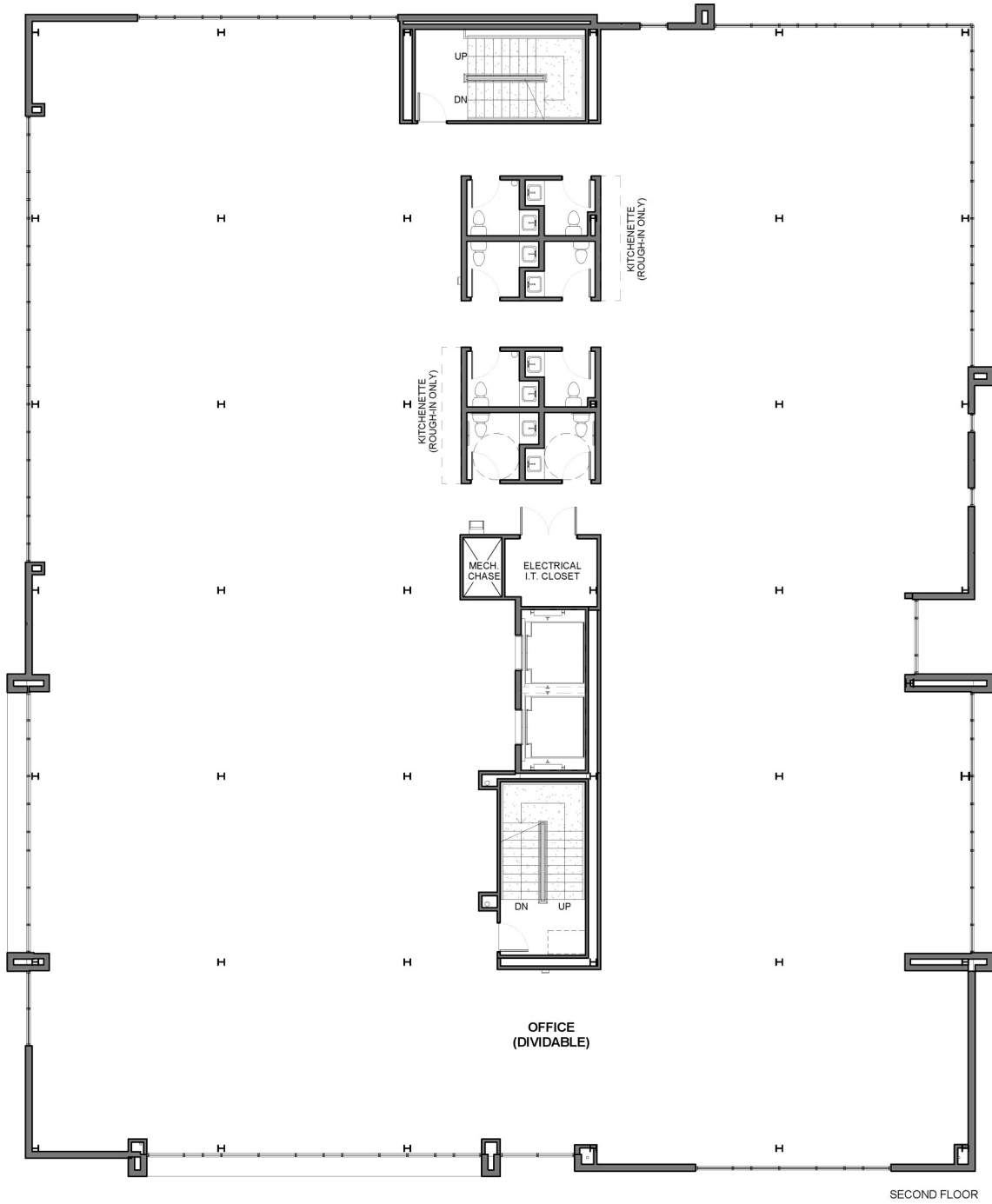
# 6@Park

## Available Space

### 3rd Floor



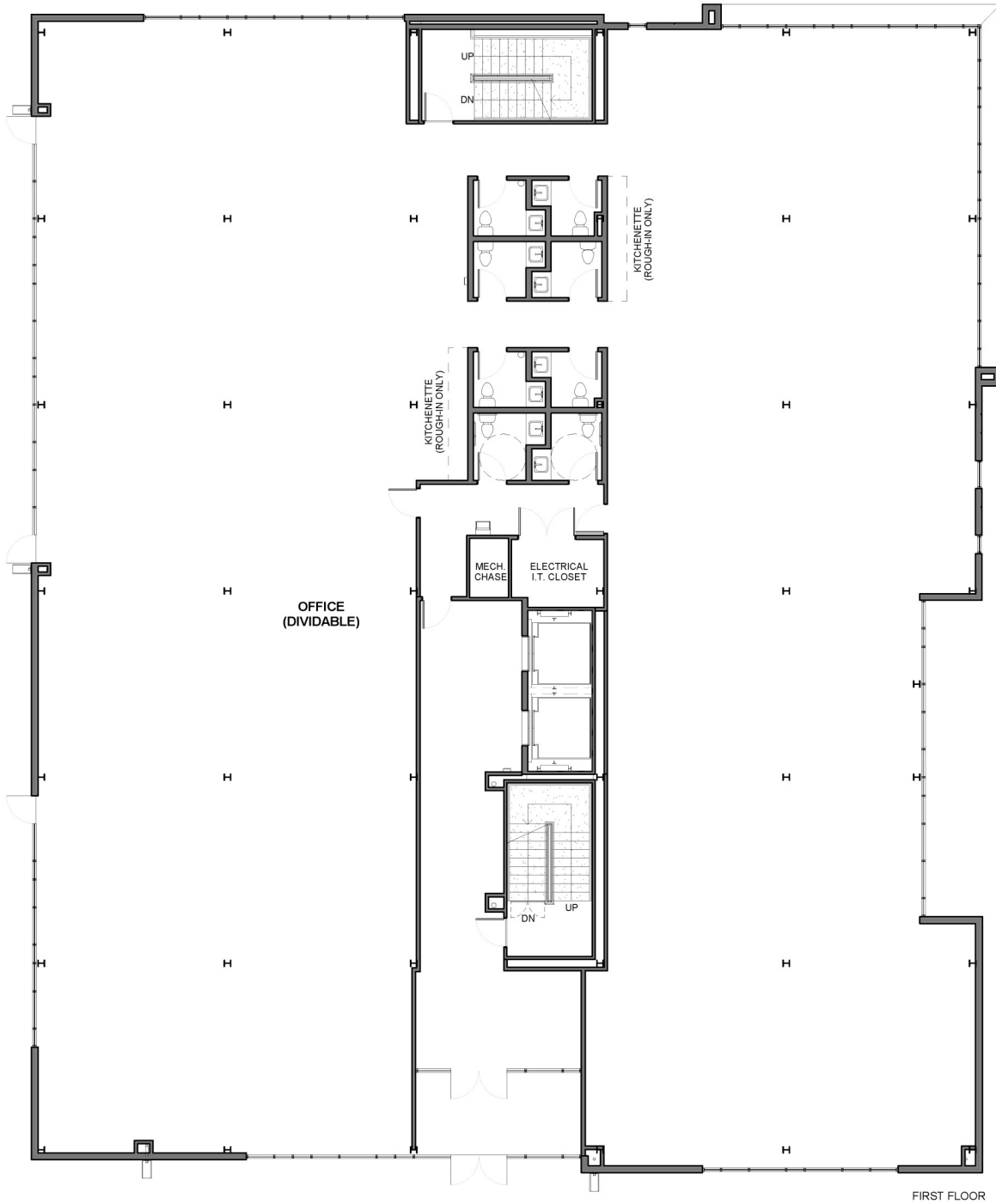
### 2nd Floor



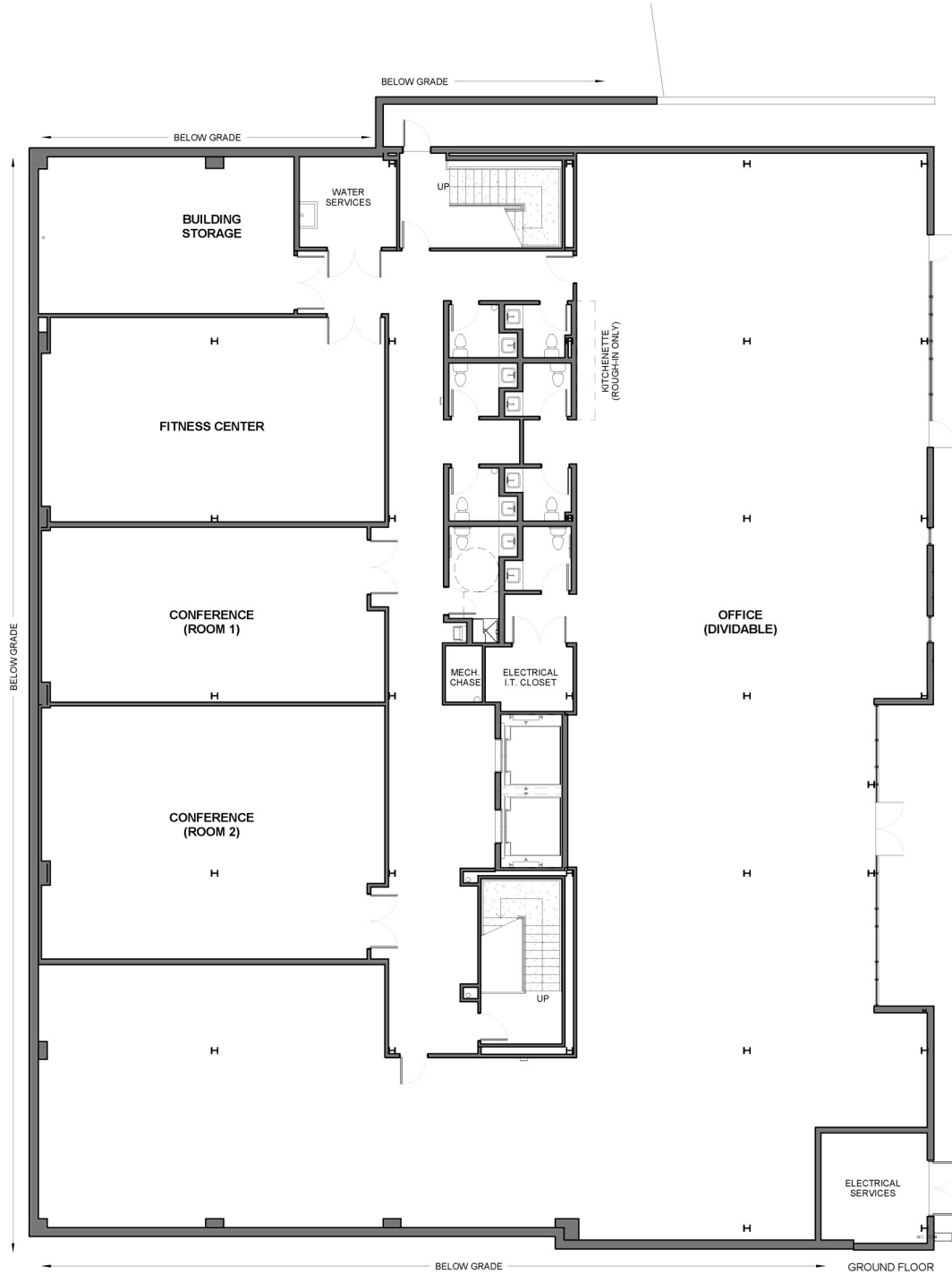
# 6@Park

## Available Space

### 1st Floor



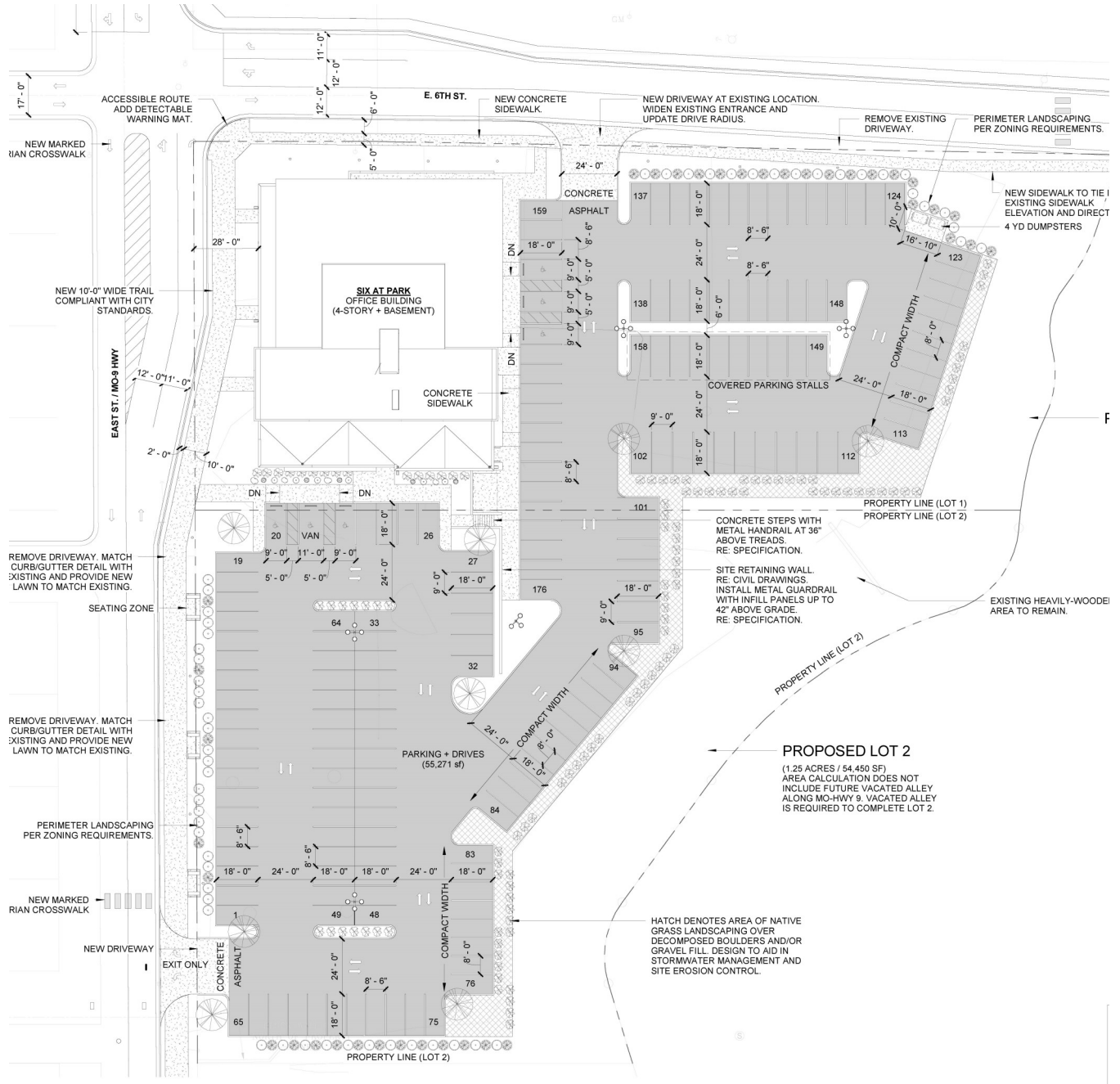
### Ground Level



# 6@Park

## Site Plan

### Site Plan





# 6@Park

## Area Amenities



WATERFORD  
PROPERTY COMPANY LLC

Chuck Connealy, SIOR, CCIM

Direct: (913) 789-9020

Cell: (913) 515-6616

[chuck.connealy@waterfordproperty.net](mailto:chuck.connealy@waterfordproperty.net)

Information furnished regarding property is from sources deemed reliable but no warranty or representation is made as to the accuracy thereof and same is submitted subject to errors, omissions, prior sale or lease or withdrawal, without notice.