

RETAIL LAND  
FOR SALE

Retail 24/7.



# 405 RAMONA STREET

RAMONA, CA 92065

CALL FOR OFFER DATE – JANUARY 20, 2014



CBRE



### FEATURES:

- Listing Price: \$252,640
- ± .58 acres
- Across the street from Rite Aid and Stater Brothers
- Current Zoned Use: General Commercial
- TIF or Enterprise Zone: Ramona Community Planning Area

### 2013 ESTIMATED DEMOGRAPHICS

	1 mile	3 miles	5 miles
<b>POPULATION:</b>	8,722	18,647	30,492
<b>AVG. HOUSEHOLD INCOME:</b>	\$71,071	\$80,512	\$90,147

FOR MORE  
INFORMATION  
PLEASE  
CONTACT

**Brad Jones**  
Lic 01211248  
+ 1 858.646.4725  
brad.jones@cbre.com

**CBRE, Inc.**  
www.cbre.com

CBRE

RETAIL LAND  
FOR SALE



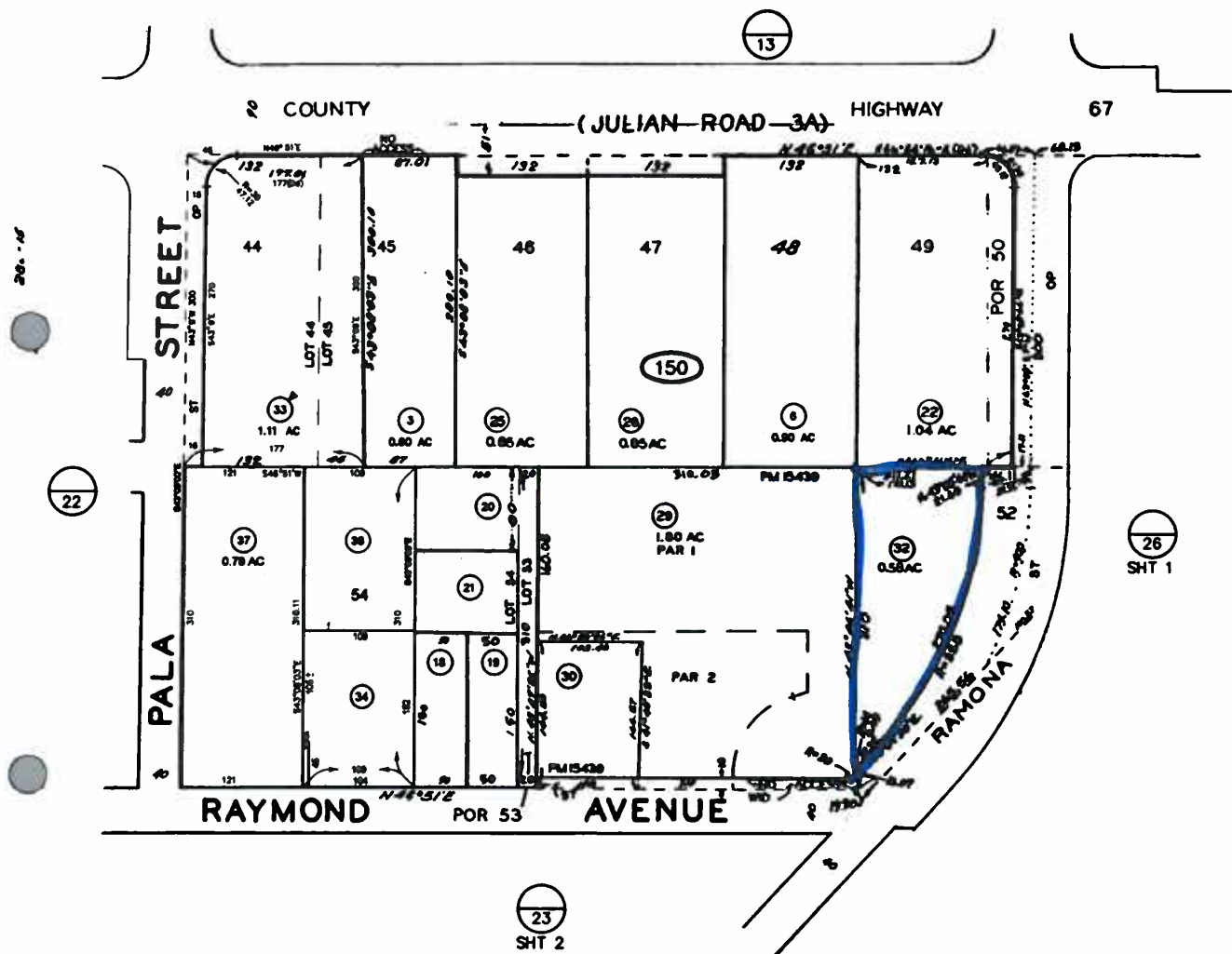
# 405 RAMONA STREET

RAMONA, CA 92065

CALL FOR OFFER DATE – JANUARY 20, 2014

Retail 24/7.

## PARCEL MAP



FOR MORE  
INFORMATION  
PLEASE  
CONTACT

Brad Jones  
Lic 01211248  
+ 1 858.646.4725  
brad.jones@cbre.com

CBRE, Inc.  
www.cbre.com

**CBRE**

**RETAIL LAND  
FOR SALE**



**405  
RAMONA STREET**

RAMONA, CA 92065

**CALL FOR OFFER DATE – JANUARY 20, 2014**

**Retail 24/7.**

**DEMOGRAPHICS**

	<b>405 Ramona St 1 mile radius</b>	<b>405 Ramona St 3 mile radius</b>	<b>405 Ramona St 5 mile radius</b>	
<b>POPULATION</b>	2013 Estimated Population	8,722	18,647	30,492
	2018 Projected Population	9,173	19,232	31,929
	2010 Census Population	8,464	18,349	29,631
	2000 Census Population	8,087	17,806	27,493
	Growth 2010-2013	3.06%	1.63%	2.91%
	Growth 2013-2018	5.17%	3.14%	4.71%
<b>HOUSEHOLDS</b>	2013 Estimated Median Age	32.63	35.51	38.91
	2013 Estimated Average Age	34.71	36.50	38.13
	2013 Estimated Households	2,838	5,979	10,119
	2018 Projected Households	2,997	6,158	10,542
	2010 Census Households	2,744	5,895	9,902
	2000 Census Households	2,650	5,721	8,911
<b>INCOME</b>	Growth 2010-2013	3.45%	1.42%	2.19%
	Growth 2013-2018	5.59%	3.00%	4.18%
	2013 Est. Average Household Size	3.08	3.09	3.00
	2013 Est. Median Household Income	\$53,597	\$61,535	\$72,729
	2018 Prj. Median Household Income	\$55,041	\$63,188	\$75,116
	2000 Cen. Median Household Income	\$42,907	\$50,945	\$58,164
<b>HOUSING</b>	2013 Est. Average Household Income	\$71,071	\$80,512	\$90,147
	2013 Estimated Per Capita Income	\$23,127	\$25,815	\$29,917
	2013 Estimated Housing Units	3,023	6,385	10,783
	2013 Estimated Occupied Units	2,838	5,979	10,119
	2013 Estimated Vacant Units	185	406	664
	2013 Est. Owner Occupied Units	1,488	3,633	7,138
	2013 Est. Renter Occupied Units	1,350	2,346	2,981
	2013 Est. Median Housing Value	\$330,482	\$352,687	\$376,624
2013 Est. Average Housing Value	\$352,735	\$398,529	\$432,190	

**FOR MORE  
INFORMATION  
PLEASE  
CONTACT**

**Brad Jones**  
Lic 01211248  
+ 1 858.646.4725  
brad.jones@cbre.com

**CBRE, Inc.**  
www.cbre.com

© 2014 CBRE, Inc. The information contained in this document has been obtained from sources believed reliable. While CBRE, Inc. does not doubt its accuracy, CBRE, Inc. has not verified it and makes no guarantee, warranty or representation about it. It is your responsibility to independently confirm its accuracy and completeness. Any projections, opinions, assumptions or estimates used are for example only and do not represent the current or future performance of the property. The value of this transaction to you depends on tax and other factors which should be evaluated by your tax, financial and legal advisors. You and your advisors should conduct a careful, independent investigation of the property to determine to your satisfaction the suitability of the property for your needs. Photos herein are the property of their respective owners and use of these images without the express written consent of the owner is prohibited.

