

6,000 SF RETAIL ENDCAP AVAILABLE FOR LEASE

14830-14858 CLAYTON ROAD | CHESTERFIELD, MO 63017



6,000 SF RETAIL ENDCAP (MAY BE DEMISED TO 1,500, 3,000 OR 4,500 SF)

- 14830-14836 Clayton Road
- Thriving neighborhood retail center anchored by MERS Goodwill, The Shack, Fit-Flavors, Mimi's Bridal & Boutique and Barrel House
- Newly renovated facade with tower feature building signage
- 5.5 per 1,000 parking ratio
- Located near the signalized intersection of Clayton Road and Baxter Road with high visibility from and great access to Clayton Road
- Traffic volume on Clayton Road: over 37,000 vehicles per day
- **LEASE RATE: \$16.00 PSF NNN**

For additional information, please contact:

TONY GIARRATANO

tony@hutkin.com

314.708.4922 o.

314.276.2352 m.

BO KEEFER

bkeefe@hutkin.com

314.708.1258 o.

314.973.1242 m.

HUTKIN
DEVELOPMENT COMPANY

10829 OLIVE BOULEVARD, SUITE 200
ST. LOUIS, MISSOURI 63141
314.872.9140 PHONE
314.872.9001 FAX
WWW.HUTKIN.COM

6,000 SF RETAIL ENDCAP AVAILABLE FOR LEASE

14830-14858 CLAYTON ROAD | CHESTERFIELD, MO 63017



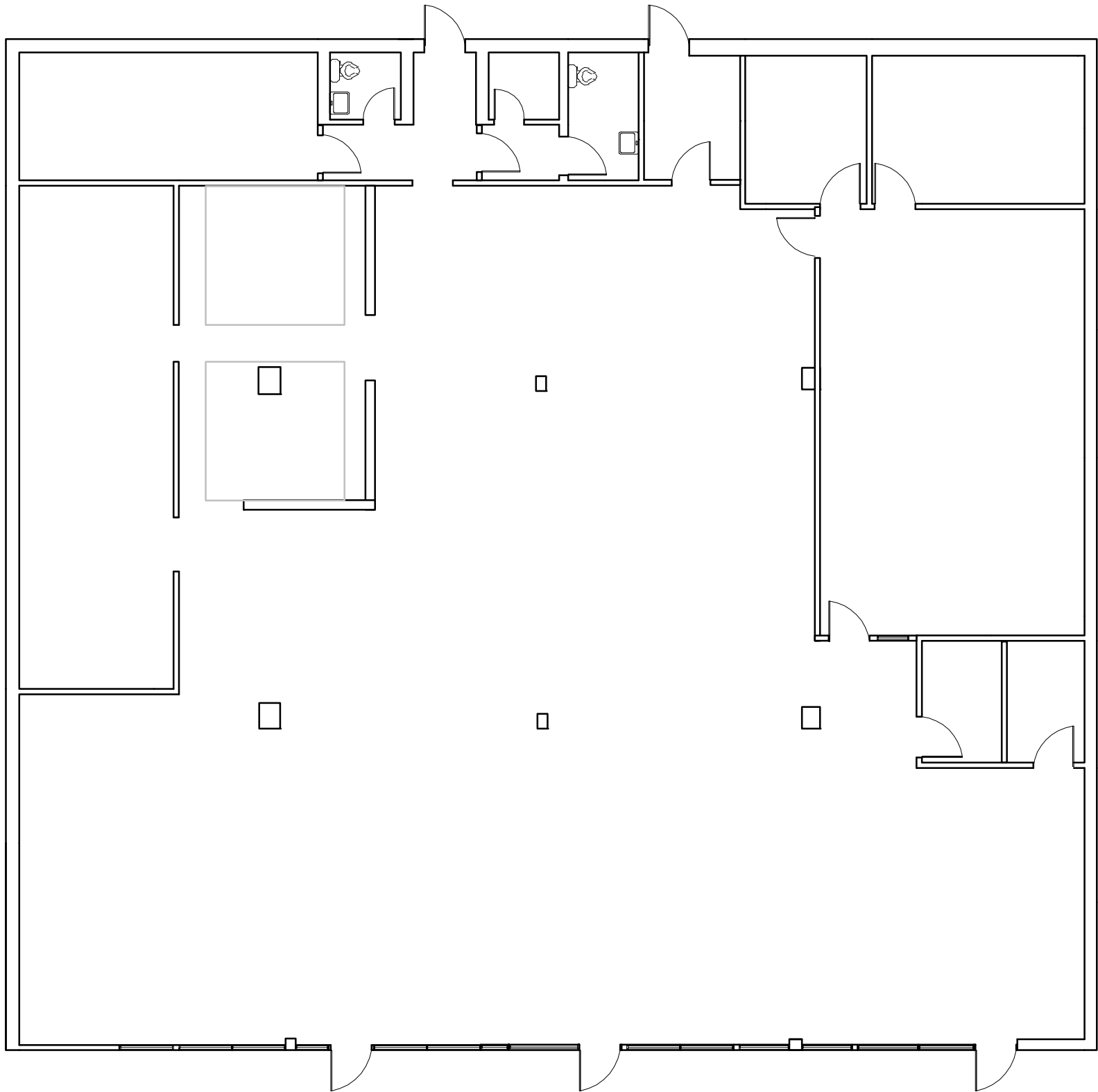
DEMOGRAPHICS	(1 MILE)	(3 MILE)
Population:	8,137	75,751
Daytime Employment:	2,109	54,984
No. of Households:	3,270	30,083
AVG HH Income:	\$168,629	\$149,495

ANNUAL AVERAGE DAILY TRAFFIC	
Clayton Road:	37,428 vehicles



6,000 SF RETAIL ENDCAP AVAILABLE FOR LEASE

14830-14858 CLAYTON ROAD | CHESTERFIELD, MO 63017



14830-14836 CLAYTON ROAD
1,500, 3,000, 4,500 OR 6,000 SF