

Building signage with I-55 visibility!

YOUR COMPANY NAME HERE

FOR SALE

Excellent Owner/User Opportunity

900 S. Frontage Rd | Woodridge, Illinois

Highlights

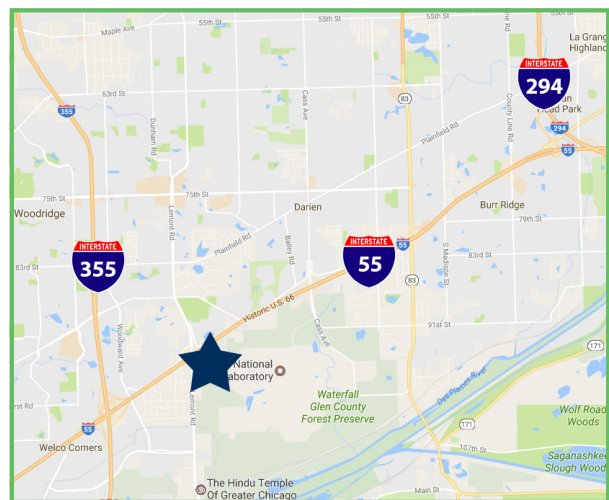
- Three story, multi-tenant office complex
- 5 days a week janitorial service
- Gorgeous window lines throughout
- On-site management
- Abundant amenities nearby including hotels, restaurants, retail, fitness & daycare centers
- Visibility from I-55
- Close proximity to I-55 & I-355 interchanges

Details

- Total Building: **70,130 SF**
- Stories: **Three**
- Parking: **250 Free Surface**
- Construction: **Masonry**

Pricing

- Sale Price: **\$6,950,000 (\$99.00 PSF)**



For More Information, Contact:

Rawly Lantz

D: 630.729.7944

M: 630.810.0300 Ext. 116

rlantz@cawleychicago.com

Tony Russo

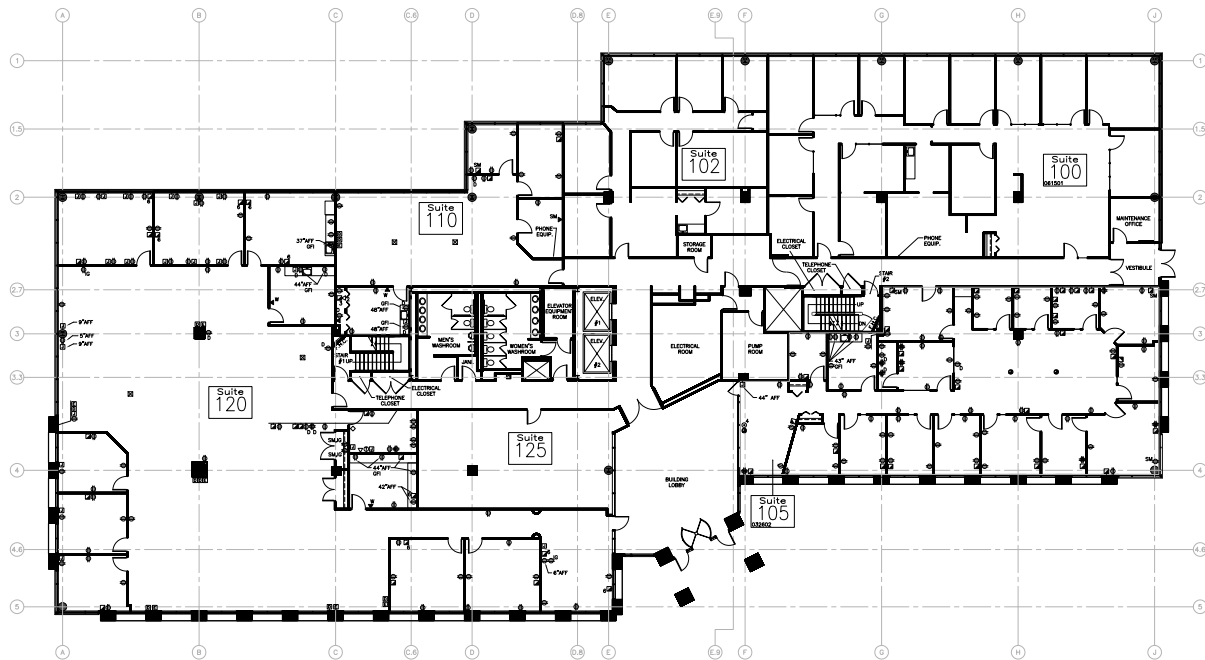
D: 630.729.7935

M: 630.810.0300 Ext. 112

trusso@cawleychicago.com

First Floor Plan

23,376 SF



For More Information, Contact:

Rawly Lantz

D: 630.729.7944

M: 630.810.0300 Ext. 116

rlantz@cawleychicago.com

Tony Russo

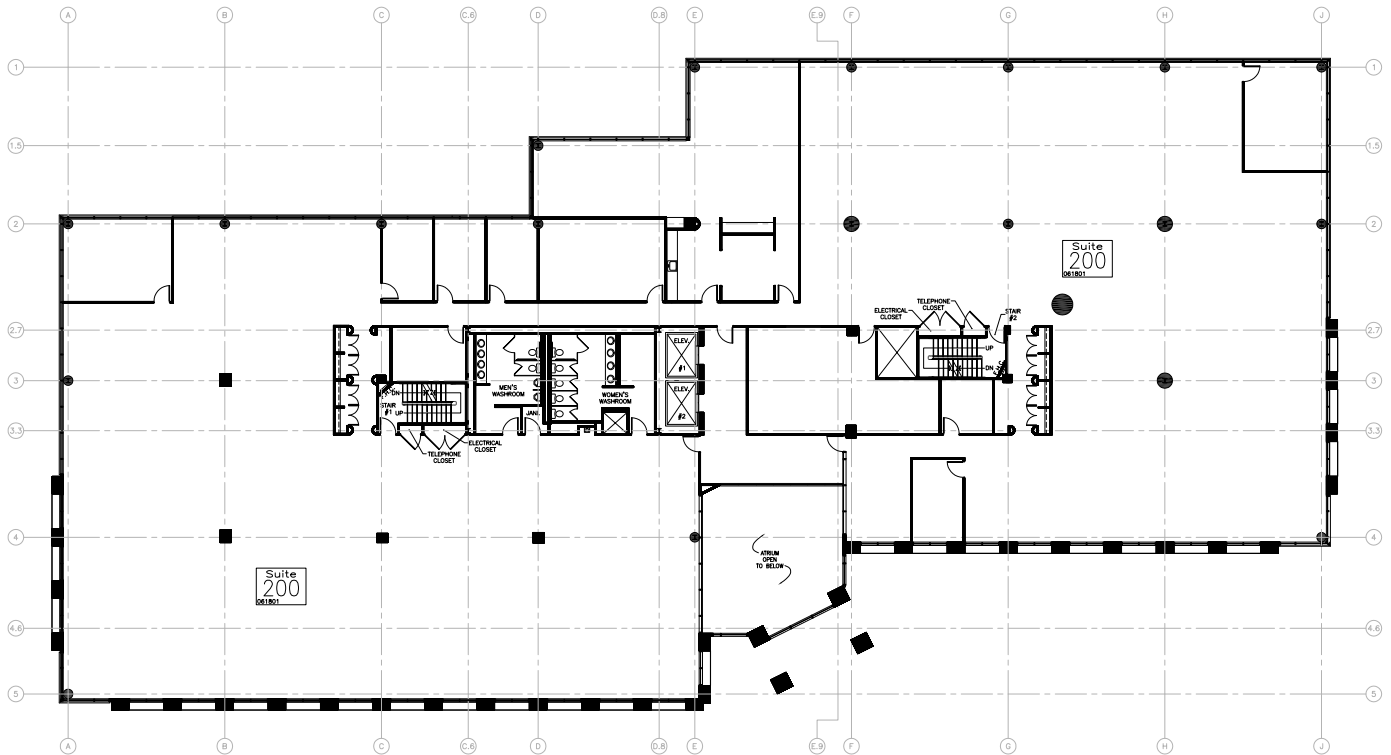
D: 630.729.7935

M: 630.810.0300 Ext. 112

trusso@cawleychicago.com

Second Floor Plan

23,376 SF



For More Information, Contact:

Rawly Lantz

D: 630.729.7944

M: 630.810.0300 Ext. 116

rlantz@cawleychicago.com

Tony Russo

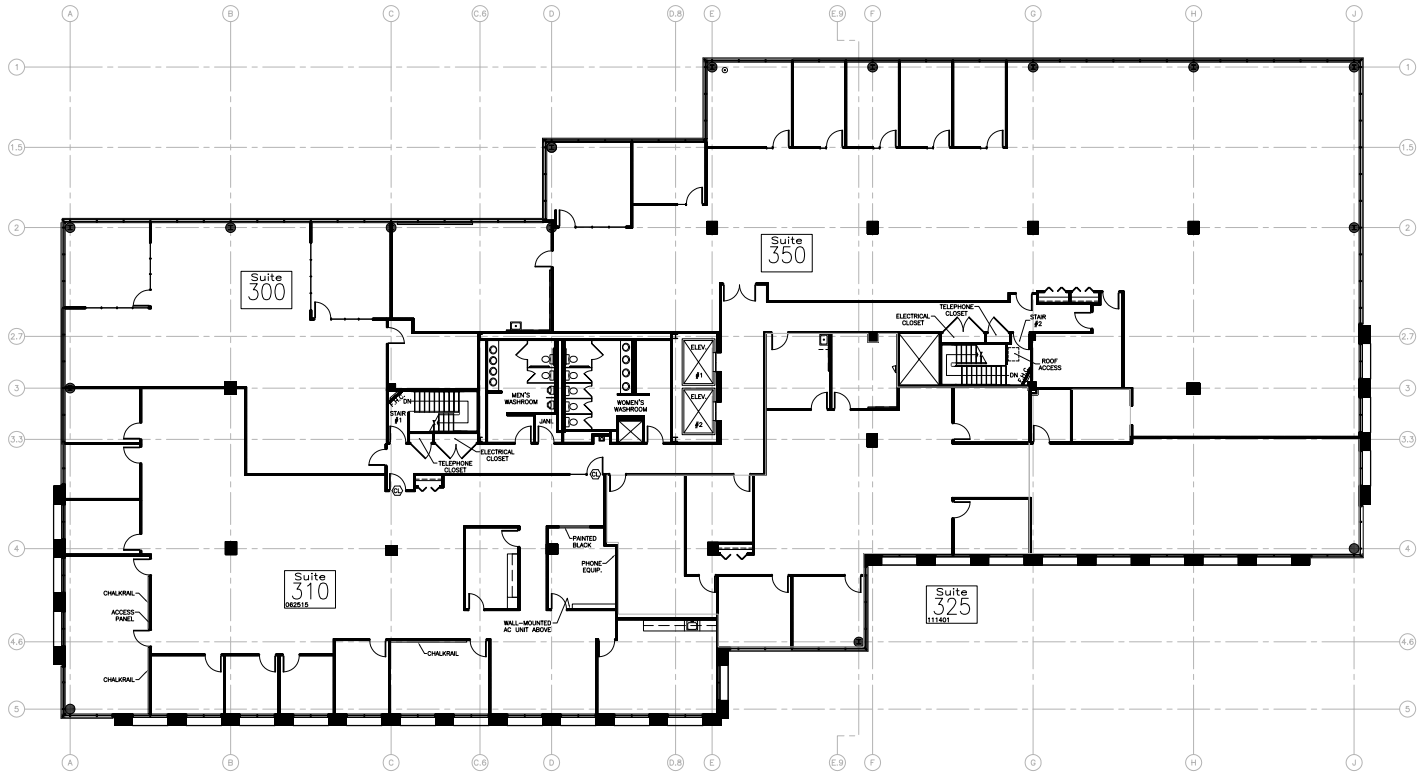
D: 630.729.7935

M: 630.810.0300 Ext. 112

trusso@cawleychicago.com

Third Floor Plan

23,376 SF



For More Information, Contact:

Rawly Lantz

D: 630.729.7944

M: 630.810.0300 Ext. 116

rlantz@cawleychicago.com

Tony Russo

D: 630.729.7935

M: 630.810.0300 Ext. 112

trusso@cawleychicago.com