

Auburn Hill Building

4118 B Place NW
Suite A
Auburn, WA

17,920 SF

1,400 SF office

2 DH doors with pit levelers
1 GL door (12' x 14')

24' clear height

\$0.49 shell
\$0.85 office

End cap space

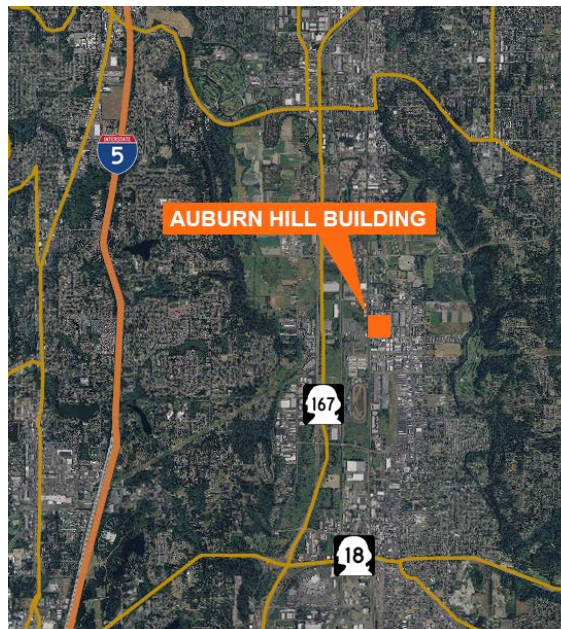
Approx 2,500 SF H2 room

Easy access to SR-167

Available January 1, 2017



Location

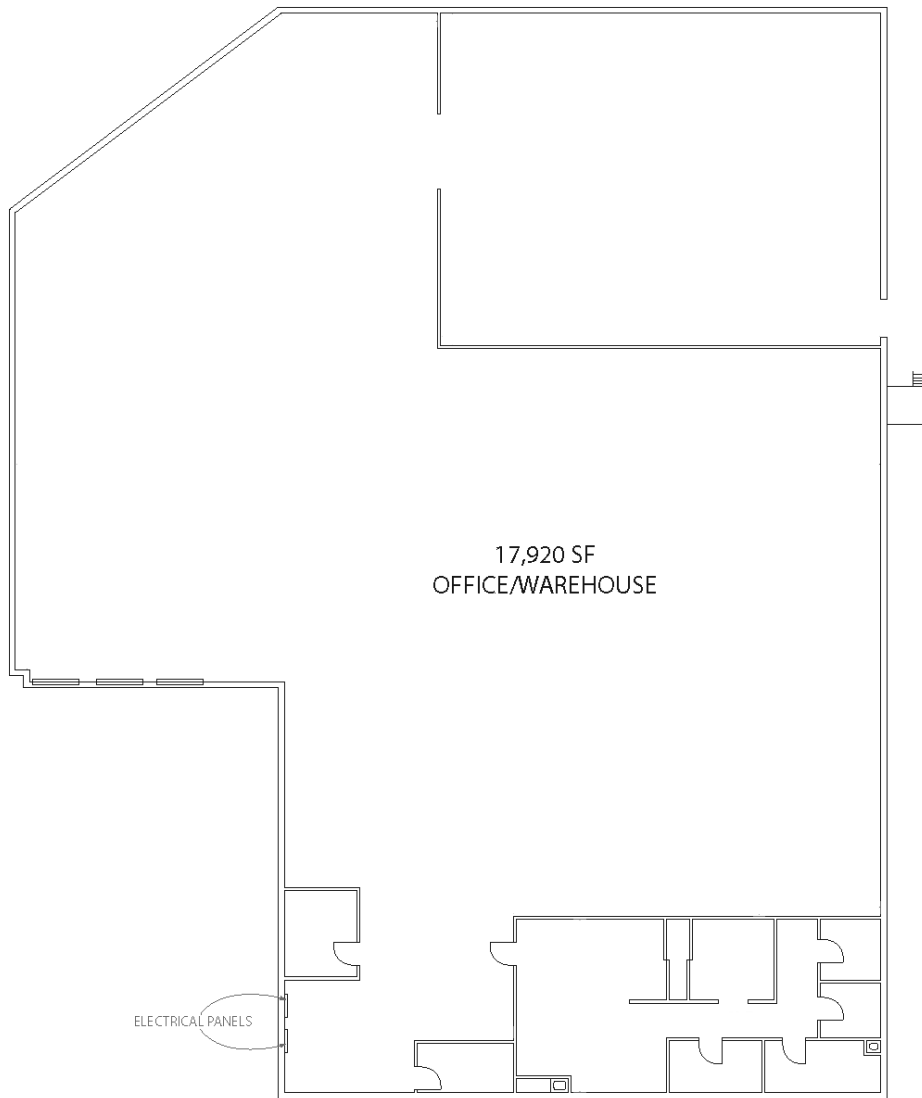


Contact

Thad Mallory, SIOR
206.248.7338
tmallory@kiddermathews.com

Tony Miltenberger, SIOR
206.248.7307
tonym@kiddermathews.com

Auburn Hill Building



Contact

Thad Mallory, SIOR
206.248.7338
tmallory@kiddermathews.com

Tony Miltenberger, SIOR
206.248.7307
tonym@kiddermathews.com